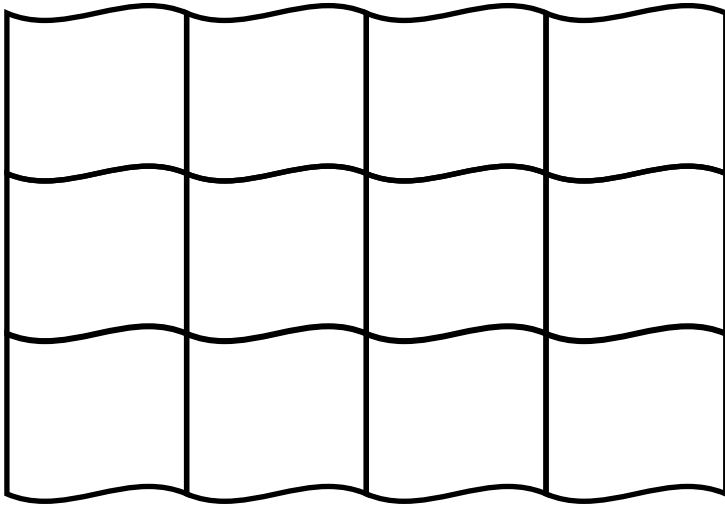


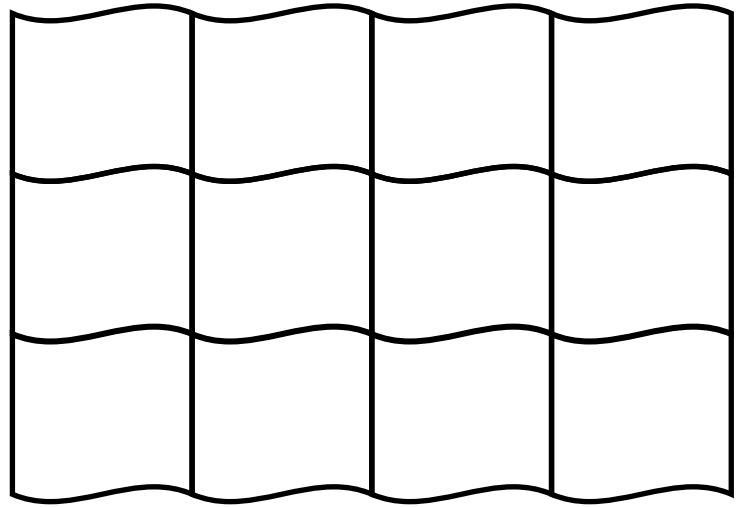
# Flag designs: halves, thirds, quarters

Colour the flags according to the instructions. Compare your flags with a partner. Do they look the same?



$\frac{1}{4}$

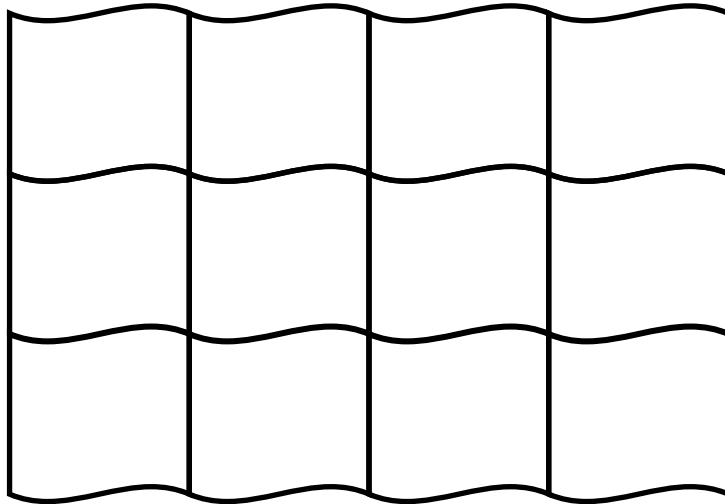
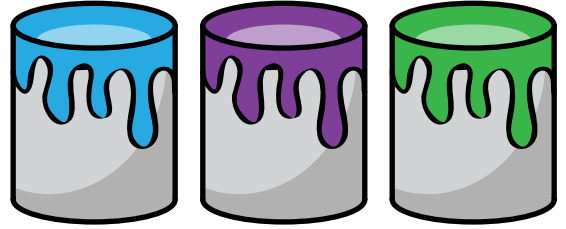
$\frac{3}{4}$



$\frac{1}{3}$

$\frac{1}{3}$

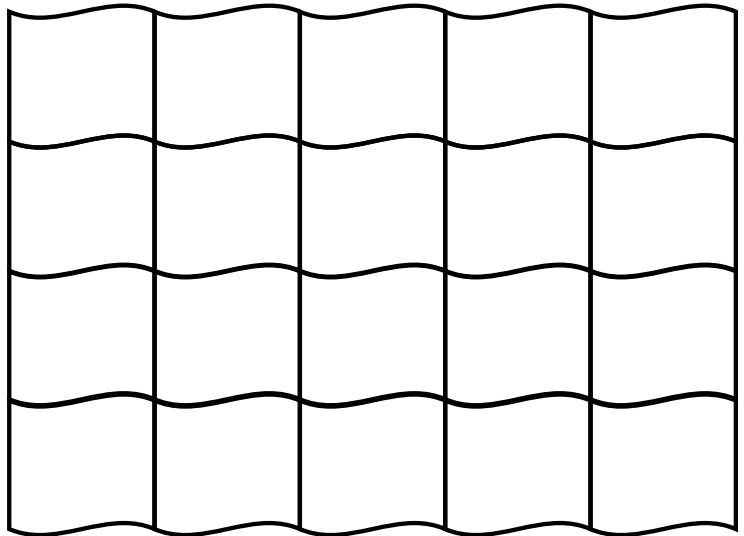
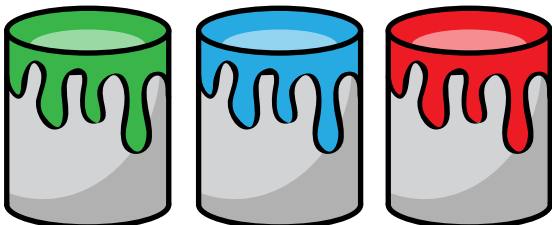
$\frac{1}{3}$



$\frac{1}{4}$

$\frac{1}{2}$

$\frac{1}{4}$



$\frac{1}{4}$

$\frac{1}{4}$

$\frac{1}{4}$

$\frac{1}{4}$

