

The Mystery of the Easter Egg Eater

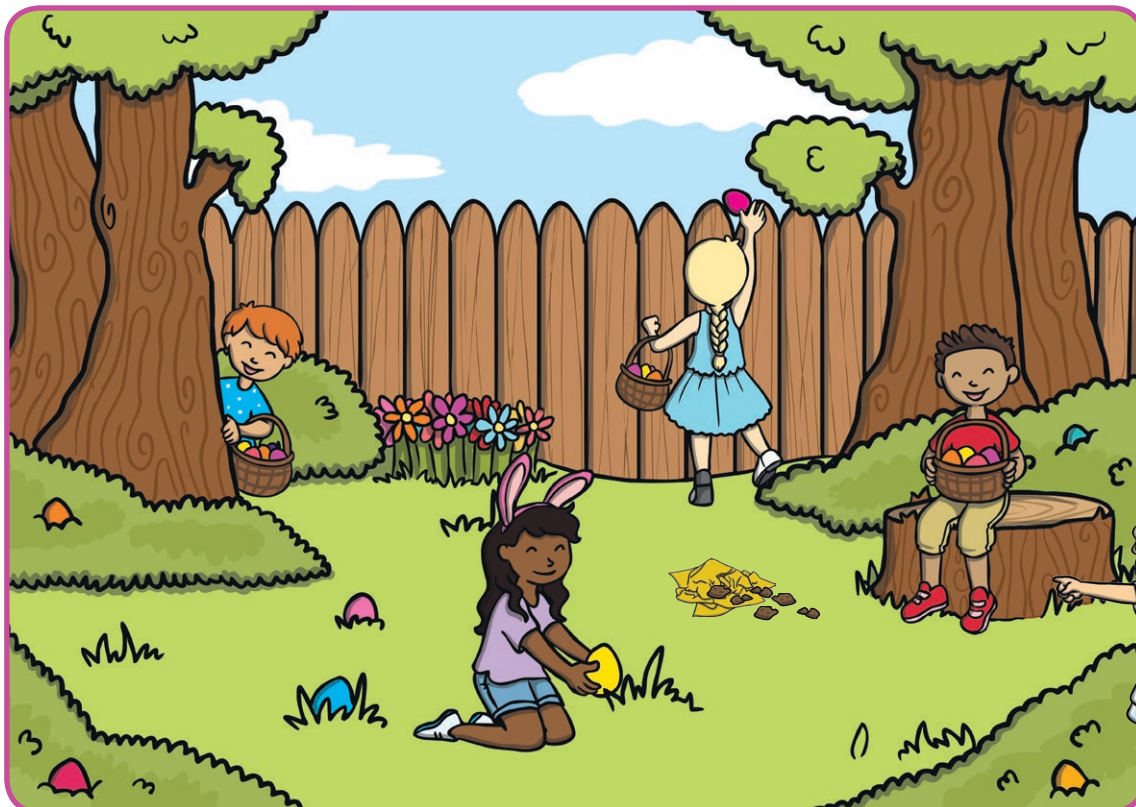
Today, the children of Class 2 are enjoying an Easter egg hunt in the park as a special treat! Their teacher, Mrs Bunny, has hidden lots of Easter eggs for them to find. But there is one egg that every child in the class really wants to find... the 'Super-Deluxe Chocolate Dream Egg'! Mrs Bunny has promised that when the Super-Egg is found, it will be shared between all the children.

But when the children find the Super-Egg's hiding place, there is only an empty gold wrapper and some soggy chocolate crumbs... Someone has eaten the Super-Egg and they haven't shared any of it!

As chief detective on the case, it is your job to find out who has eaten the Super-Egg! You have the names and details of all the children in Class 2. There are also four important clues to be discovered.

To crack the case, you will need to solve each clue and check the information with the list of names. Will you be able to find out who the Super-Egg eater is before it's time to go back to school?

Good luck!



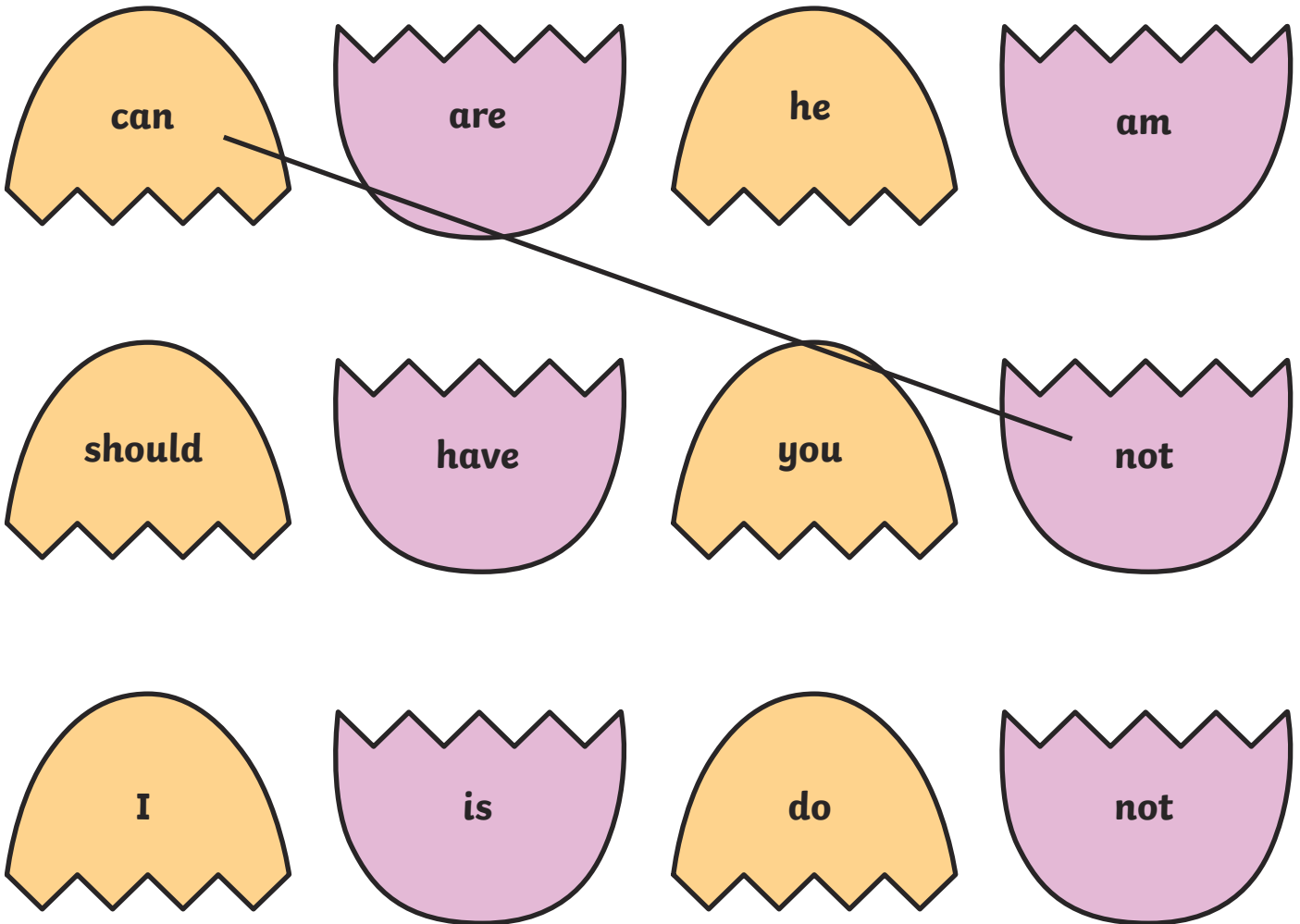
Class 2 Children Descriptions

| First Name | Surname | Age | Hair Colour | Eye Colour | Favourite Chocolate |
|------------|----------|-----|-------------|------------|---------------------|
| Amelia | Smith | 6 | brown | green | milk |
| Harry | O'Kelly | 7 | ginger | blue | dark |
| Mariam | Adil | 7 | black | grey | white |
| Scarlett | Olsen | 6 | blonde | brown | milk |
| Mohammed | Usman | 6 | brown | brown | White |
| Charlie | Rose | 6 | brown | brown | milk |
| Chloe | Kinston | 7 | brown | blue | milk |
| Jay | Jones | 7 | black | grey | dark |
| Zara | Zayan | 6 | black | brown | milk |
| Henry | Blossom | 6 | brown | blue | milk |
| Aisha | Rehan | 6 | black | grey | milk |
| Riley | Wilson | 7 | brown | green | white |
| Ella | Daniels | 6 | blonde | blue | white |
| Adnan | Patel | 6 | black | brown | milk |
| Evie | Wallace | 7 | ginger | blue | milk |
| Callum | Flynn | 7 | blond | brown | dark |
| Mia | Royce | 7 | brown | brown | milk |
| Lucas | Taylor | 6 | brown | blue | dark |
| Destiny | Robinson | 6 | brown | grey | milk |
| Ibrahim | Dilek | 6 | black | grey | dark |

The Super-Egg eater is _____

Clue 1: Cracked Contraction Clues

The Super-Egg eater has left lots of broken Easter egg shells lying around the crime scene! Can you match up the shells' words that go together and can form a contraction? One example has been done for you. Match up all the shells and write the contractions below. Count how many completed contractions you have made (including the example) to find out the Super-Egg eater's age.



can't, _____

The Super-Egg eater's age is _____.

Clue 2: Correct the Clue!

Under the crumpled wrapper and crumbs, a note has been found. It has been written by the Super-Egg eater! But they are not very good at spelling. Help Mrs Bunny correct the spelling by underlining the words that are spelt incorrectly and writing the correct spellings in the boxes below.

The letters in the highlighted boxes, when placed in the correct order, will spell the colour of the Super-Egg eater's hair.

| | | | |
|---|---|--|--|
| | | | |
| M | | | |
| | n | | |
| | h | | |
| g | | | |

Dear Class 2,

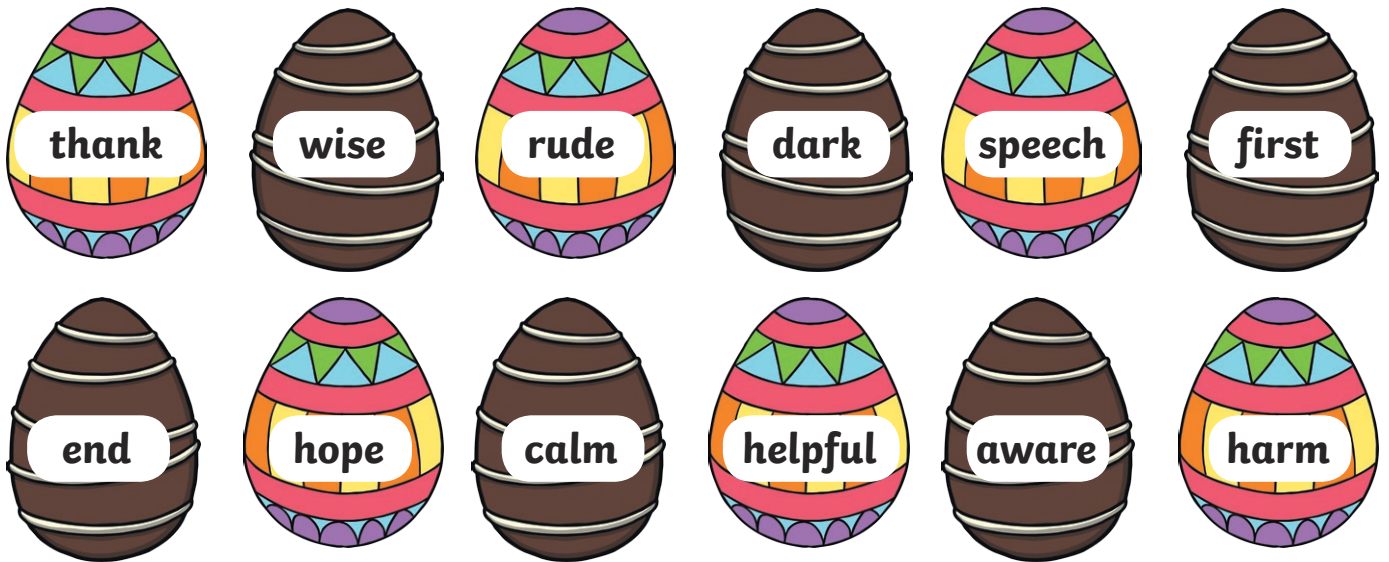
Bi now you know what I have done! I can't believe I really ate the Super-Egg Missus Bunny was saving for us to share. I onlee meant to have a little nibble but now it's all gon... You will never know hoo I am!!!

The Easter Egg Eater

The Super-Egg eater's hair colour is _____.

Clue 3: Egg Hunt Suffix Sorting

The Super-Egg eater has left some of their favourite chocolate eggs behind! Each egg has a root word on it, and each basket has a suffix. Can you sort the eggs into the correct basket by writing the completed word (root word + suffix) below? Some root words can have more than one suffix. The basket with the most words will tell you the Super-Egg eater's favourite chocolate.







The Super-Egg eater's favourite chocolate is _____.

Clue 4: Easter Card Word Classes

An Easter card has been discovered at the scene of the crime. The Super-Egg eater must have dropped it as they were eating the egg! There is a poem on the card. Can you count the number of nouns, verbs, adjectives and adverbs used in the poem and write them in the table below? You only need to count each word once. The word class that has been used the most will tell you the eater's eye colour.



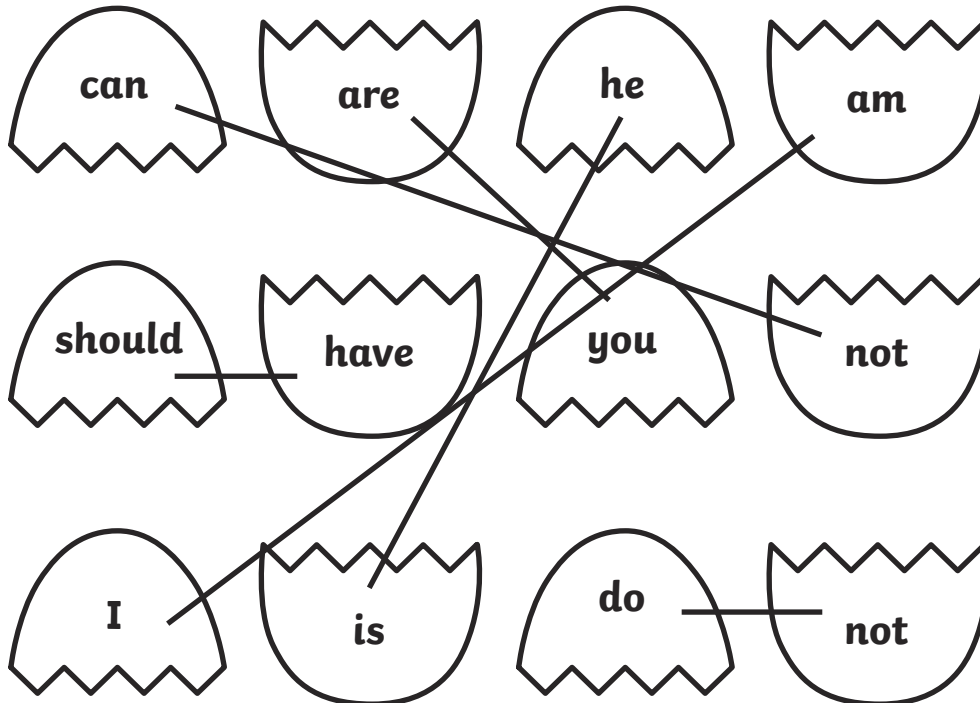
| | |
|-----------------------|--|
| Noun (Brown Eyes) | |
| Verb (Grey Eyes) | |
| Adverb (Green Eyes) | |
| Adjective (Blue Eyes) | |

The Super-Egg eater's eye colour is _____.

The Mystery of the Easter Egg Eater

Answers

Clue 1: Cracked Contraction Clues



can't, you're, he's, I'm, should've, don't

The Super-Egg eater's age is **6**.

Clue 2: Correct the Clue!

| | | | |
|---|---|---|---|
| b | y | | |
| M | r | s | |
| o | n | l | y |
| w | h | o | |
| g | o | n | e |

The Super-Egg eater's hair colour is **brown**.

Dear Class 2,

Bi now you know what I have done! I can't believe I really ate the Super-Egg **Missus** Bunny was saving for us to share. I **onlee** meant to have a little nibble but now it's all **gon**... You will never know **hoo** I am!!!

The Easter Egg Eater

Clue 3: Egg Hunt Suffix Sorting

| -ly (milk chocolate) | -less (white chocolate) | -ness (dark chocolate) |
|--|---|---|
| <p>wisely rudely firstly calmly darkly helpfully</p> | <p>thankless speechless endless hopeless harmless</p> | <p>rudeness darkness calmness helpfulness awareness</p> |

The Super-Egg eater's favourite chocolate is **milk chocolate**.

Clue 4: Easter Card Word Classes

| | |
|-----------------------|---|
| Noun (Brown Eyes) | spring, lambs, fields, birds, trees, flowers, ground, honeybees, fruit, vine, Easter, time |
| Verb (Grey Eyes) | sprung, playing, chirp, bursting, loved, hangs, have |
| Adverb (Green Eyes) | sweetly, finally |
| Adjective (Blue Eyes) | new, happy, brilliant |

The Super-Egg eater's eye colour is **brown**.

The Super-Egg eater is Charlie Rose.

