

## Spelling

Common Words

**Four miss never these**

Activities: Choose from

1. Rainbow write words
2. Hidden Words. Draw and colour a picture, hide your spelling words in your picture. Show your picture to someone and see if they can find your words

**Challenge:** write a sentence for two of your words.

Don't forget to write the date **12-5-20** and title

**Common Words** in your jotter.

## Reading

**Milk and story:** Cave Baby by Julia Donaldson & illustrated by Emily Gravett.

**CBeebies Bedtime Stories: The Problems with Problems.** Tom Hardy reads a bedtime story, about how any problem - no matter how big - can be overcome.

<https://www.bbc.co.uk/iplayer/episode/m000hs1y/cbeebies-bedtime-stories-...>



## Numeracy

Try BBC Bitesize Add and subtract by making ten

<https://www.bbc.co.uk/bitesize/articles/zb8gcqt>

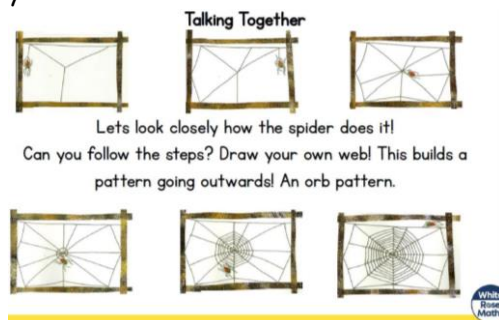
**Challenge:** Adding and subtracting two-digit numbers and tens

<https://www.bbc.co.uk/bitesize/articles/zbypscw>

## Patterns

**Making Webs:** Webs are very complex patterns.

Have a go at being a very busy spider! How will you make yours?



Unleash your inner spiderman by making your own web.

You could use tape or string to make it a 3-D web. How will you connect it? How will you have to move to design your web? Can you go under, over and through? How long did it take you?

Make a sticky web with tape; see who can get the most flies to stick to it! (You could use pom poms or rolled up tape.) Roll 10 or 20 "flies" and see how many go into your web. You can do this on the floor with tape or chalk.

## Other Areas

### Design

**Design Brief:** Design a seed packet, must include the name of the plant and price.

- Design a seed packet; look at picture of seed packets for inspiration.
- What do you notice? They have pictures of how the plant will look.
- Choose a flower of vegetable the seed will grow.
- This can be a real flower or vegetable or one from your imagination.
- You can use the template on the blog or make your own.

Email a photo of your finished design to the school

[wlwestfield-ps@westlothian.org.uk](mailto:wlwestfield-ps@westlothian.org.uk)

### Science

Check our science Sway to see how the fair test is going and for some more frog life cycle tasks.