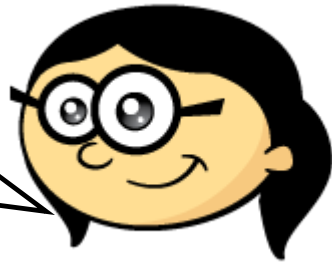


1 What are the missing digits?

$$\begin{array}{|c|} \hline 3 \\ \hline \end{array} \begin{array}{|c|} \hline \\ \hline \end{array} + \begin{array}{|c|} \hline \\ \hline \end{array} \begin{array}{|c|} \hline 5 \\ \hline \end{array} = \begin{array}{|c|} \hline 7 \\ \hline \end{array} \begin{array}{|c|} \hline 6 \\ \hline \end{array}$$

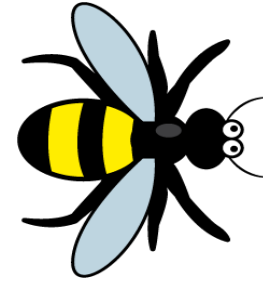
2 Annie and Ron each think of a number.

I'm thinking of the number 6

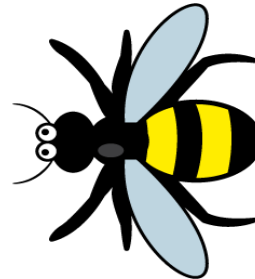
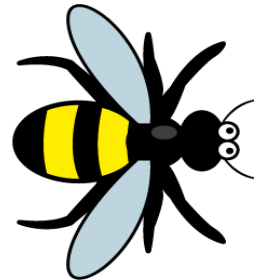


The sum of their numbers is 25
What is Ron's number?

3 The bee makes a half turn.



Which way is the bee now facing?

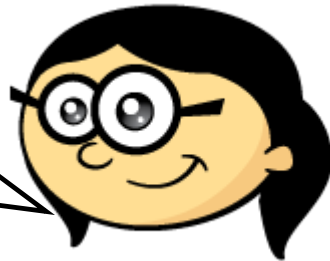


1 What are the missing digits?

$$\begin{array}{|c|} \hline 3 \\ \hline \end{array} \begin{array}{|c|} \hline \\ \hline \end{array} + \begin{array}{|c|} \hline \\ \hline \end{array} \begin{array}{|c|} \hline 5 \\ \hline \end{array} = \begin{array}{|c|} \hline 1 \\ \hline \end{array} \begin{array}{|c|} \hline 1 \\ \hline \end{array} \begin{array}{|c|} \hline 1 \\ \hline \end{array}$$

2 Annie and Ron each think of a number.

I'm thinking of the number 6



The product of their numbers is 762
Work out Ron's number.

3 Find the size of angle b.

