

Fold the card in middle so answer is on the back.

What am I ?

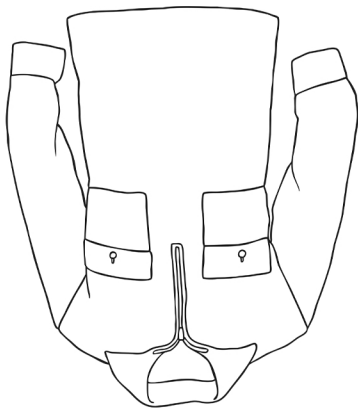
I have sleeves.

I have a collar.

I am usually made of cotton.

I have buttons.

twinkl.co.uk



What am I ?

I have long sleeves.

I keep you warm.

I don't have buttons.

twinkl.co.uk



What am I ?

I have short sleeves.

I am worn in the summer.

I don't have buttons.

twinkl.co.uk



What am I ?

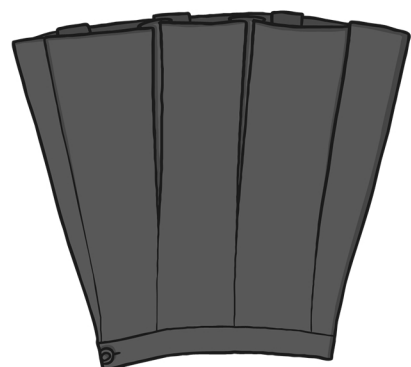
I cover people from the waist downwards.

I come in different lengths.

I can be pleated.

I am usually worn by girls.

twinkl.co.uk



Fold the card in middle so answer is on the back.

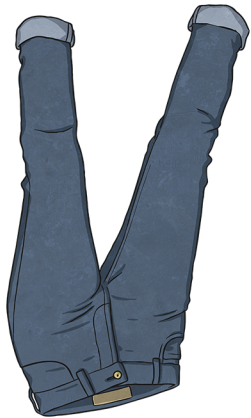
What am I ?

I cover the legs.

I cover each leg separately.

I am made of denim.

[twinkl.co.uk](https://www.twinkl.co.uk)



What am I ?

I come in pairs.

I cover the ankles and feet.

I am usually worn with shoes.

[twinkl.co.uk](https://www.twinkl.co.uk)



What am I ?

I come in pairs.

I cover the feet.

I am worn to go outside.

[twinkl.co.uk](https://www.twinkl.co.uk)



What am I ?

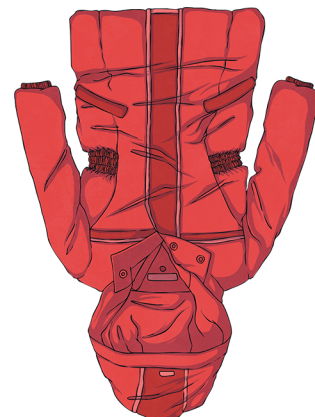
I have sleeves.

I can have a zip or buttons.

I sometimes have a hood.

I am worn to go outside.

[twinkl.co.uk](https://www.twinkl.co.uk)



Fold the card in middle so answer is on the back.

What am I ?

I come in different styles.

I am very comfortable.

I am worn in bed.

[twinkl.co.uk](https://www.twinkl.co.uk)

