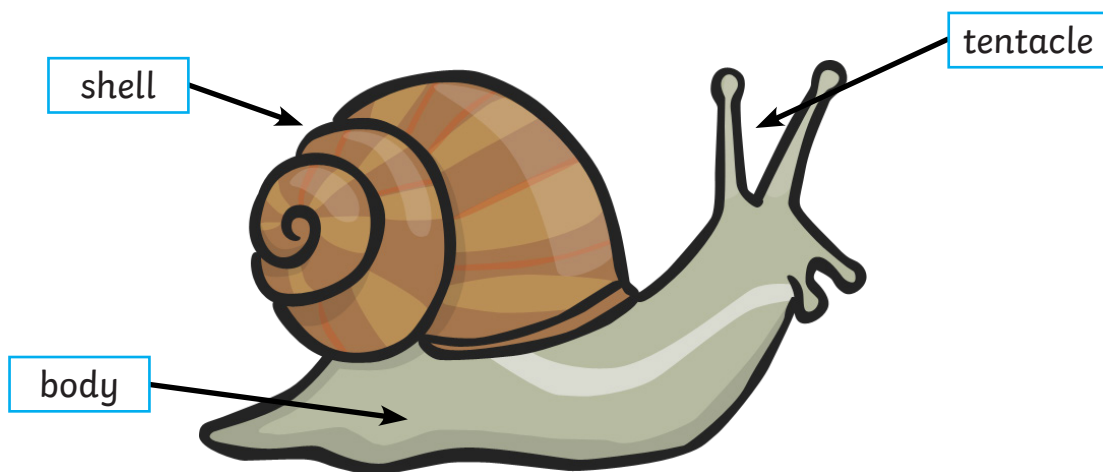


Snails

There are lots of types of snails in the world. The snails we find in our gardens are known as garden snails.



You can find them in your garden at night-time or when it has been raining. Snails like it when the ground is wet.



Slime

Snails make slime underneath their bodies. This slime helps them to slide across the ground without hurting their soft bodies.

Did You Know?

You can spot where a snail has been by looking for the silver trail they leave behind.



Questions

1. What do we call the snails we find in our gardens? Tick one.

- home snails
- garden snails
- bush snails

2. When can you find snails in the garden? Tick one.

- during the night
- during the day
- during snow

3. What do snails like the ground to be? Tick one.

- dry
- hot
- wet

4. What does slime help snails to do? Tick one.

- slide across the ground
- taste their food
- hide from predators

5. How can you spot where a snail has been? Tick one.

- They leave a silver trail.
- They leave a dry patch.
- They turn rocks over.

Answers

1. What do we call the snails we find in our gardens? Tick one.

- home snails
- garden snails
- bush snails

2. When can you find snails in the garden? Tick one.

- during the night
- during the day
- during snow

3. What do snails like the ground to be? Tick one.

- dry
- hot
- wet

4. What does slime help snails to do? Tick one.

- slide across the ground
- taste their food
- hide from predators

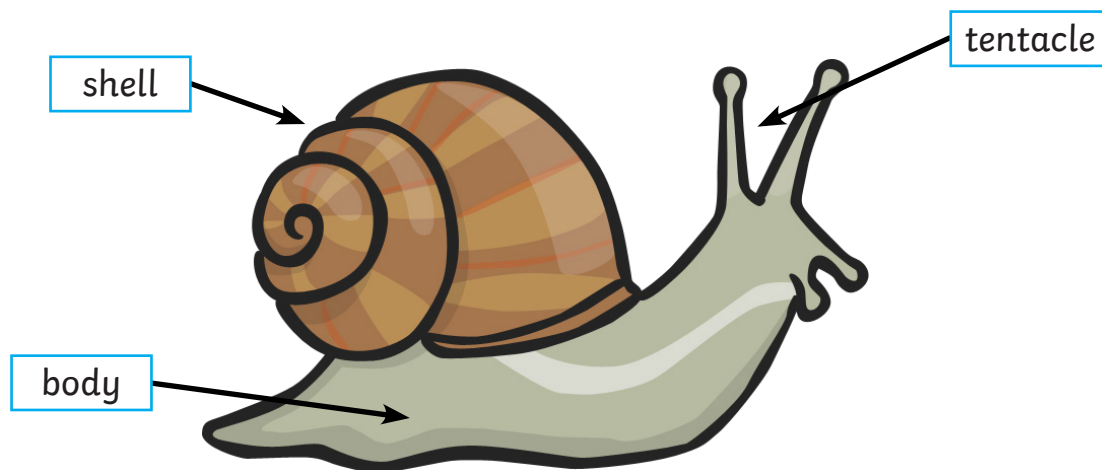
5. How can you spot where a snail has been? Tick one.

- They leave a silver trail.
- They leave a dry patch.
- They turn rocks over.

Snails

Snails are interesting creatures. There are many different species of snail. The snails we find in our gardens are known as garden snails.

What does a snail look like?



Why Does a Snail Have a Shell?

Snails have a shell on their back and it is their home. They hide in their shells from predators, such as birds.

Why Does a Snail Have Tentacles?

Snails have two sets of tentacles. Their eyes are on the top set and they also smell through these. The bottom set are used to touch and taste things.

Why Does a Snail Leave a Slime Trail?

Snails produce slime underneath their bodies. This slime helps them to slide across rough ground without getting hurt. You can spot where a snail has been by looking for the shiny trail.

Did You Know?

Snails are part of the mollusc family. This group of animals also includes squid, octopus and slugs.



Questions

1. What do we call the snails we find in our gardens? Tick one.

- garden snails
- house snails
- tree snails

2. Which of these body parts does a snail not have? Tick one.

- shell
- feathers
- tentacles

3. Why does a snail hide in its shell? Tick one.

- because it is too loud
- because a predator is nearby
- because it is hungry

4. What do snails use the top set of tentacles for?

- to see and taste
- to taste and touch
- to see and smell

5. Fill in the blank in the sentence.

Snails are part of the _____ family.

Answers

1. What do we call the snails we find in our gardens? Tick one.

- garden snails
- house snails
- tree snails

2. Which of these body parts does a snail not have? Tick one.

- shell
- feathers
- tentacles

3. Why does a snail hide in its shell? Tick one.

- because it is too loud
- because a predator is nearby
- because it is hungry

4. What do snails use the top set of tentacles for?

- to see and taste
- to taste and touch
- to see and smell

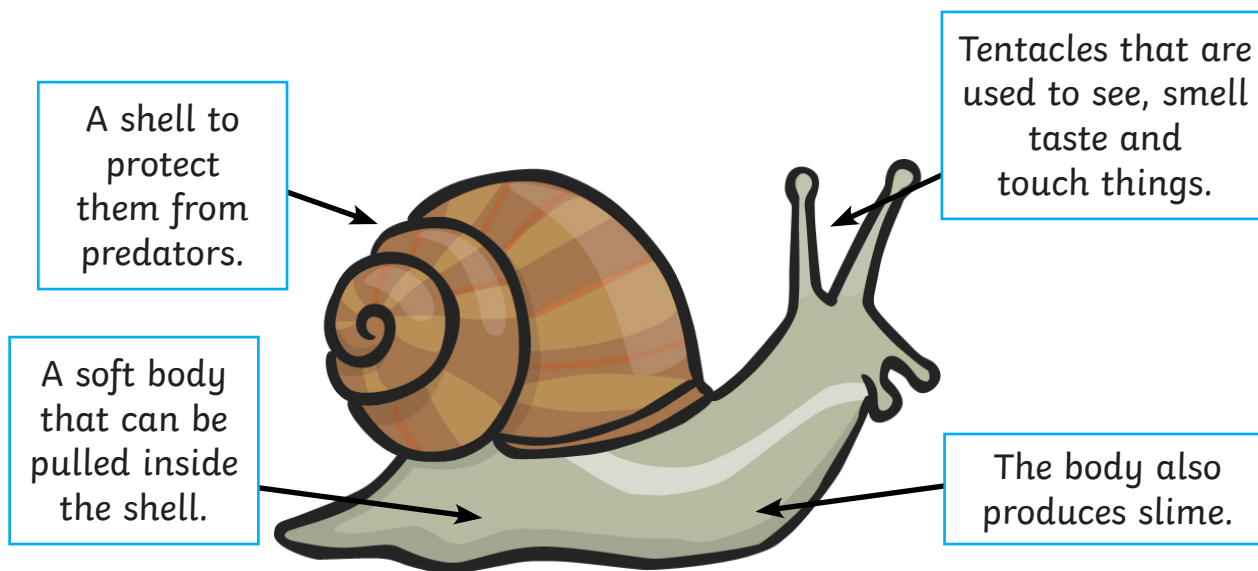
5. Fill in the blank in the sentence.

Snails are part of the **molusc** family.

Snails

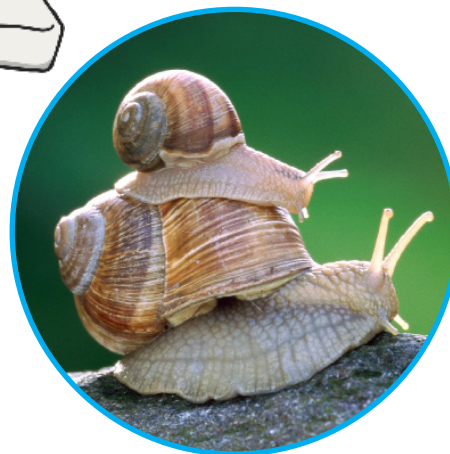
Snails are fascinating creatures. They are part of the mollusc family. Other molluscs include squid, octopus and slugs. Molluscs are invertebrates. This means they have no backbone.

There are over 60,000 species of snail in the world. The snails we find in our gardens are known as garden snails. They are nocturnal. This means they like to come out at night. Snails come out when it is damp or raining. Also, it is easier for them to slide over the ground when it is wet.



Fine Dining

In some parts of the world, snails are considered a tasty delicacy and can be ordered from the menu in restaurants.



Questions

1. What other animals are molluscs?

- octopus, slugs and dogs
- slugs, squid and octopus
- slugs, spiders and bees

2. How many species of snail are there in the world?

3. What does **nocturnal** mean?

Why do snails come out when it is damp or raining?

4. What does a snail use its tentacles for?

5. Some people do not like eating snails. Why do you think this is?

Answers

1. What other animals are molluscs?

- octopus, slugs and dogs
- slugs, squid and octopus
- slugs, spiders and bees

2. How many species of snail are there in the world?
There are over 60,000 species of snail in the world.

3. What does nocturnal mean?
Nocturnal means something that likes to come out at night.

4. Why do snails come out when it is damp or raining?
Snails come out when it is damp or raining because it is easier for them to slide over the ground when it is wet.

5. What does a snail use its tentacles for?
Snails use their tentacles to see, smell, taste and touch things around them.

6. Some people do not like eating snails. Why do you think this is?
Children's own responses, such as: I think some people do not like eating snails because they look like they would be slimy; I think some people do not like eating snails because they look like they would taste bad; I think some people do not like eating snails because they can be found under rocks in our gardens.