

# Happy

## Mood Monster



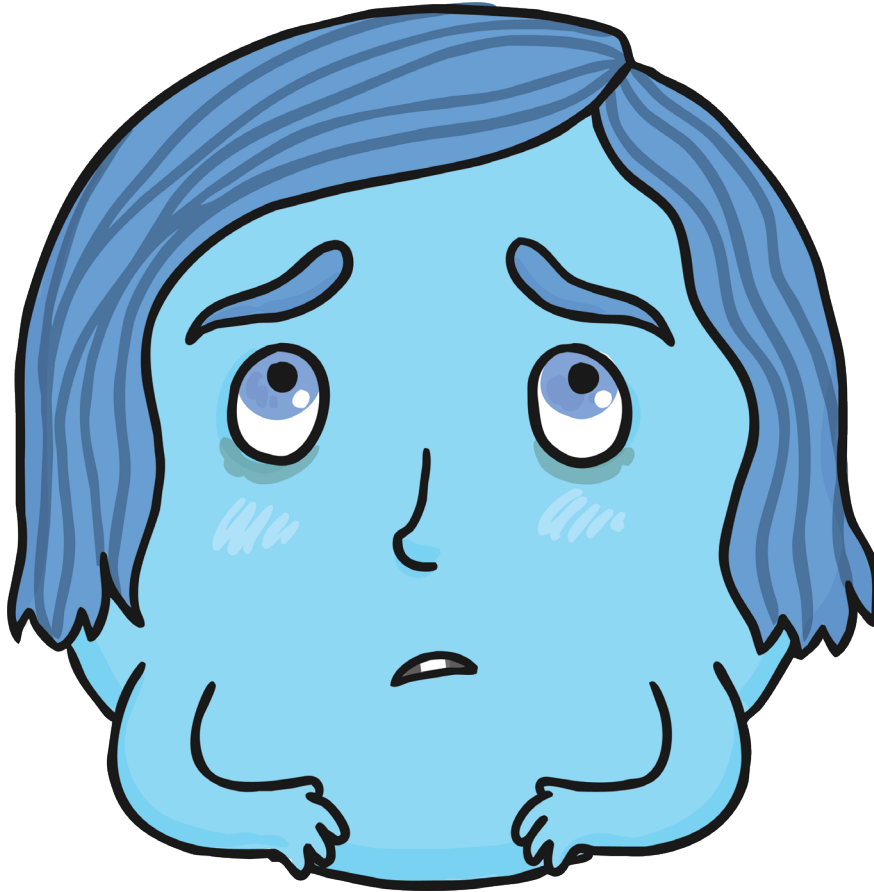
When the monsters feel happy, they turn yellow! They are smiley and cheerful. They are friendly, kind and helpful and like to wave and cuddle their friends. They often make friends with the other monsters and help them feel happy too.



visit [twinkl.com](https://www.twinkl.com)

# Sad

## Mood Monster



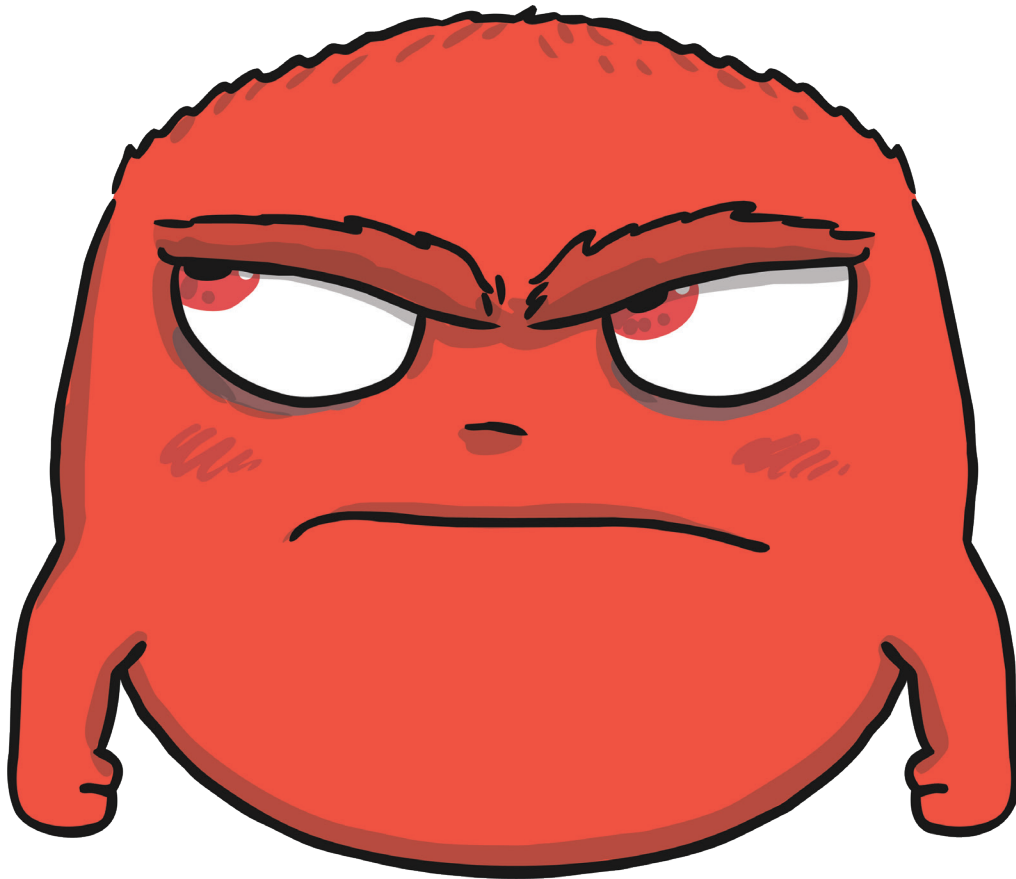
When the monsters feel sad, they turn blue. They feel unhappy and sometimes cry. They often stay by themselves and are very quiet. To change how they feel, they make friends, talk to others and get help to work out how to solve their problems.



visit [twinkl.com](https://www.twinkl.com)

# Angry

## Mood Monster



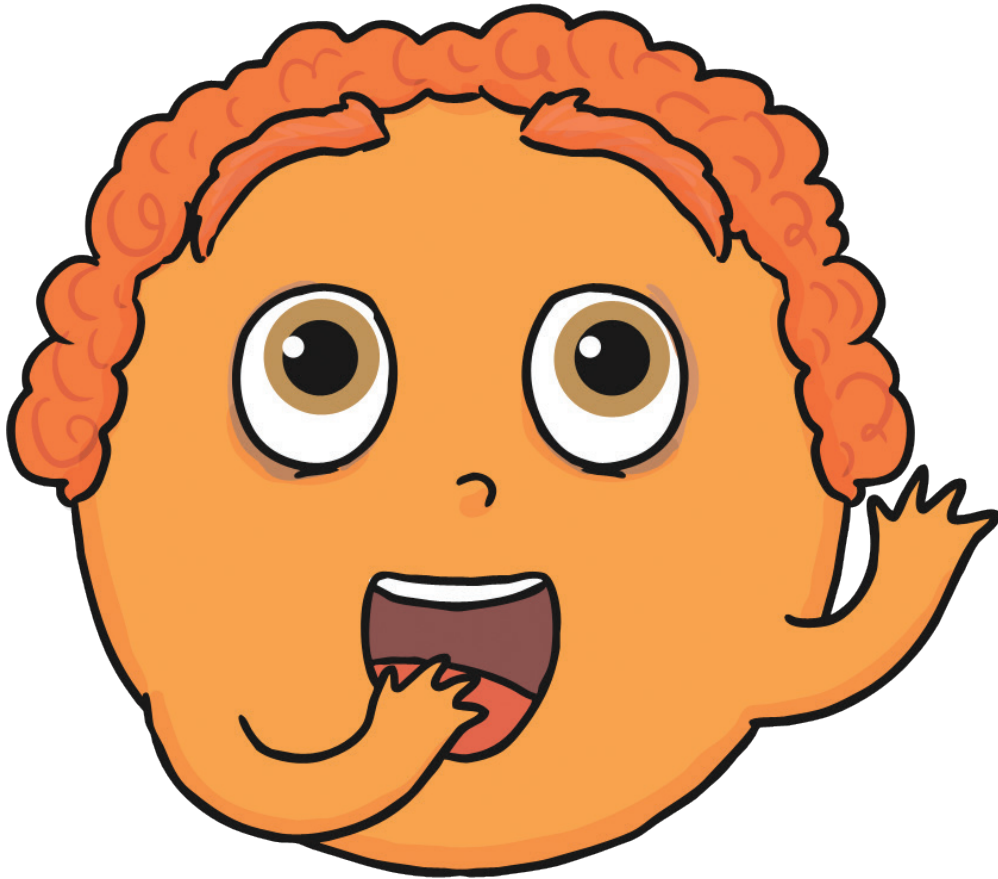
When the monsters feel angry, they turn red! They feel cross and irritable. They stamp around and sometimes shout. They are often noisy and other monsters are sometimes scared of them. To change how they feel they sit quietly and calm down, talk to others and think carefully to work out ways to solve their problems.



visit [twinkl.com](https://www.twinkl.com)

# Surprised

## Mood Monster



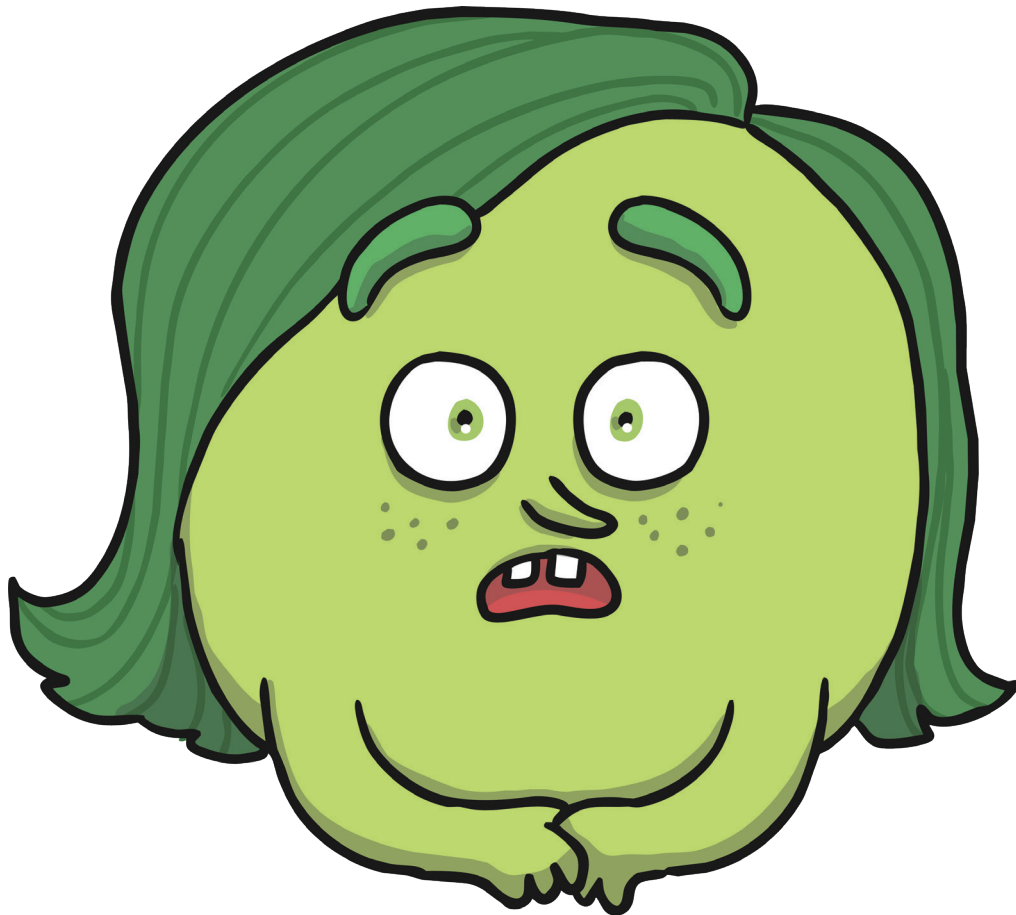
When the monsters feel surprised, they turn orange! They feel happy and a little shocked! They never know what to expect and sometimes jump in surprise! They have big eyes and a big round mouth. They have big bushy eyebrows which are often high up near their hair!



visit [twinkl.com](https://www.twinkl.com)

# Scared

## Mood Monster



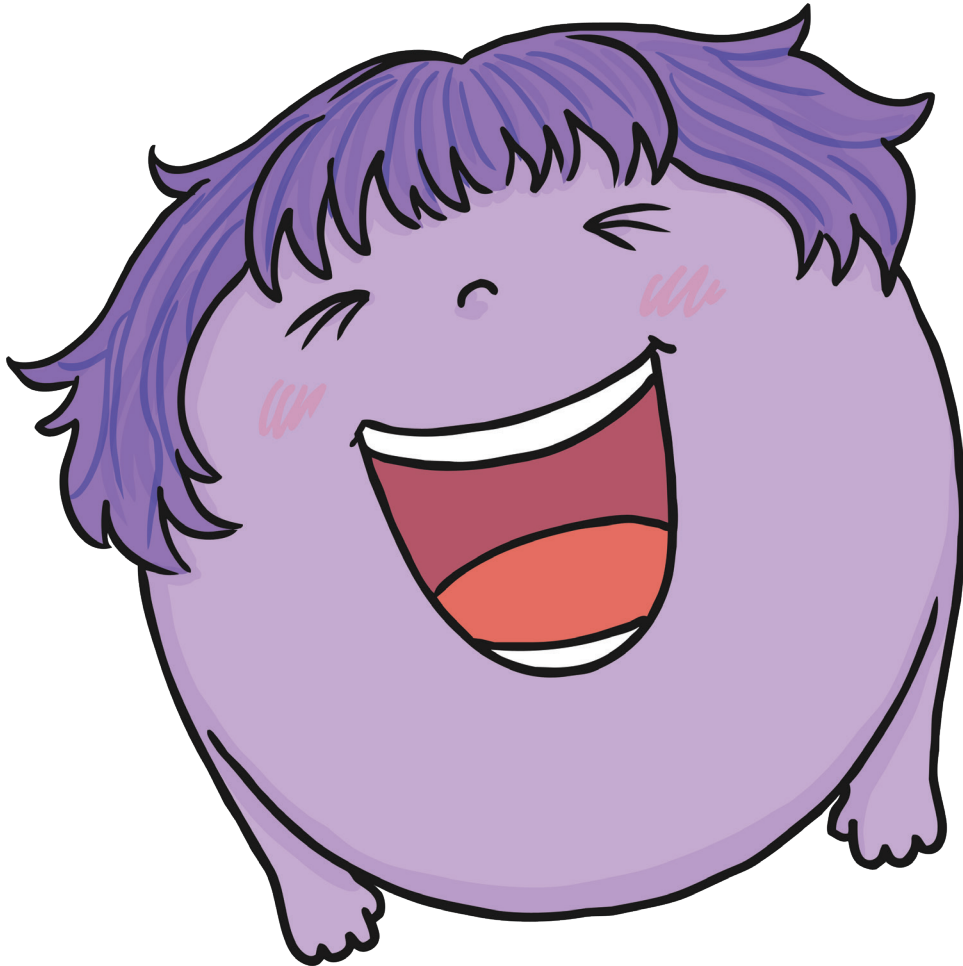
When the monsters are scared, they turn green! They often scamper around quietly and tiptoe quickly from place to place. They like to hide under or behind things and can be very quiet. To change how they feel they talk to others about what frightens or worries them.



visit [twinkl.com](https://www.twinkl.com)

# Excited

## Mood Monster



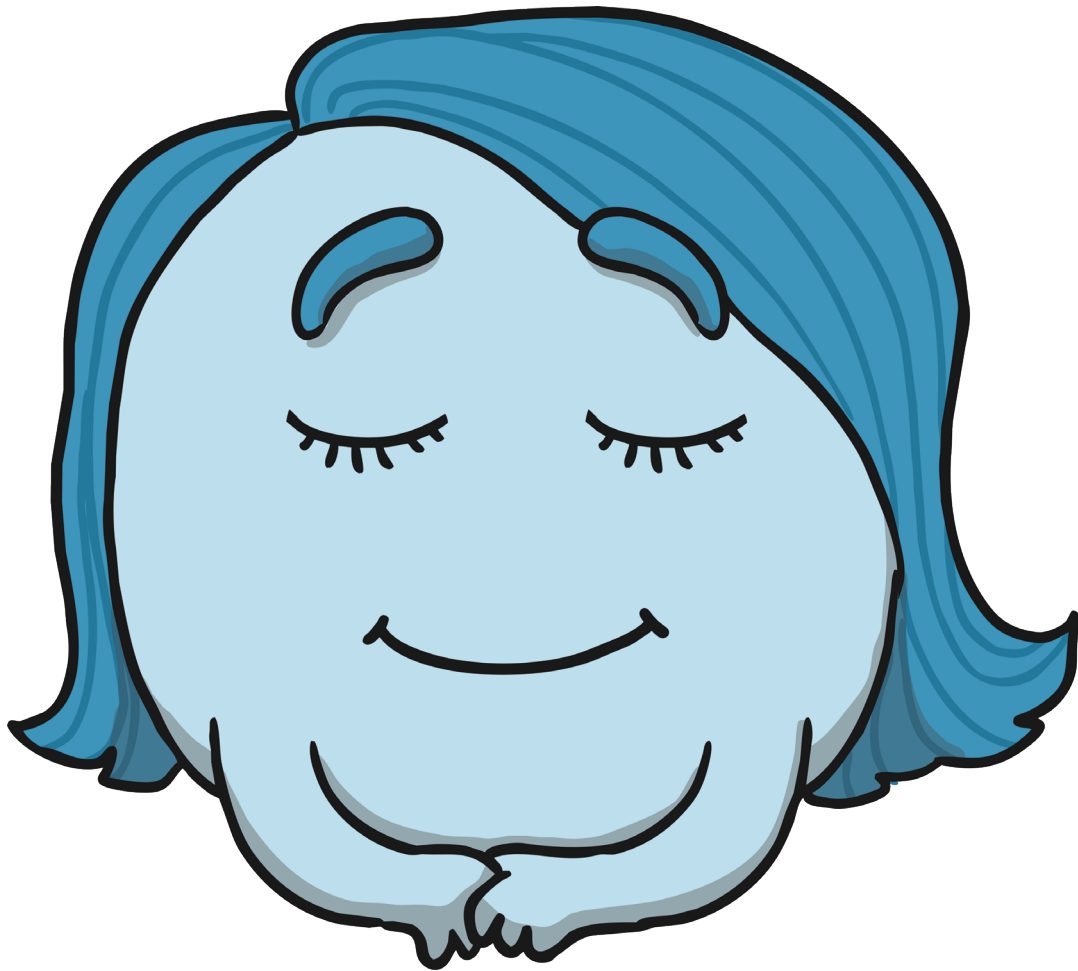
When the monsters feel excited, they turn purple! They often bounce around and often jump up and down with excitement! They move very quickly and often tire themselves out. Sometimes they have to stop to rest before bouncing around again!



visit [twinkl.com](https://www.twinkl.com)

# Calm

## Mood Monster



When the monsters feel calm, they turn blue/grey! They are often relaxed, sitting comfortably and do not feel stressed. They have a clear mind and can make great choices when they are learning, making decisions or talking in front of others. They will often find the other monsters like to be near them and make the other monsters feel calm too.



visit [twinkl.com](https://www.twinkl.com)

# Tired

## Mood Monster



When the monsters feel tired, they turn green/grey! They often look pale and yawn a lot. Look out for dark circles under their eyes as a sign of feeling tired. They can be in a bad mood or feel angry and tearful without knowing why. Treat them gently and be patient as they will feel better after a good sleep!



visit [twinkl.com](https://www.twinkl.com)



# Worried

## Mood Monster



When the mood monsters are worried they turn pink. They feel a little bit sick and a little upset. They might want some time alone to think, or they might want to share their worries with someone else. A worry monster needs a friend.



visit [twinkl.com](https://www.twinkl.com)