

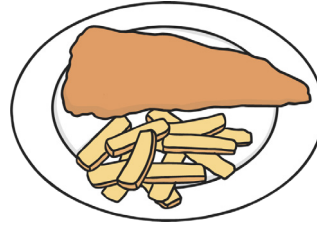


Question Mark or Full Stop?



1. Put a question mark or a full stop in the box to finish off the sentence correctly.

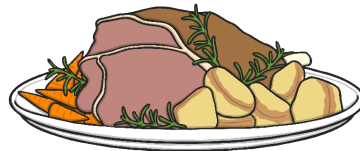
a) Do you like fish



b) Can I play with you



c) Mum is cooking dinner



d) Is it raining



e) I like my hat





Question Mark or Full Stop?



1. Put a question mark or a full stop in the box to finish off the sentence correctly.

a) Would you like a slice of cake



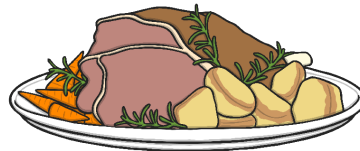
b) Can I play with you



c) What is Farhan doing



d) Mum is cooking dinner



e) Is it raining

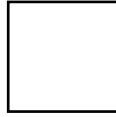


f) I like my hat

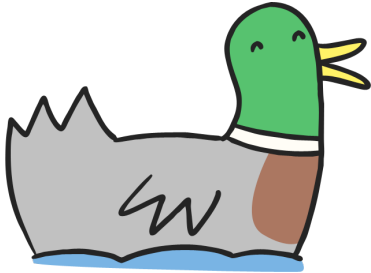




g) This flower smells nice



2. Now write your own question to go with this picture.





1. Cut out and stick the question marks or full stops onto the right sentences.
- a) Do you like fish ?
 - b) Can I play with you ?
 - c) Mum is cooking dinner .
 - d) Is it raining outside ?
 - e) Where is my hat ?



2. Cut out and stick the question marks or full stops onto the right sentences.
- a) Would you like a slice of cake ?
 - b) Can I play with you ?
 - c) Mum is cooking dinner .
 - d) What is Farhan doing ?
 - e) Is it raining outside ?
 - f) Where is my hat ?
 - g) This flower smells nice .