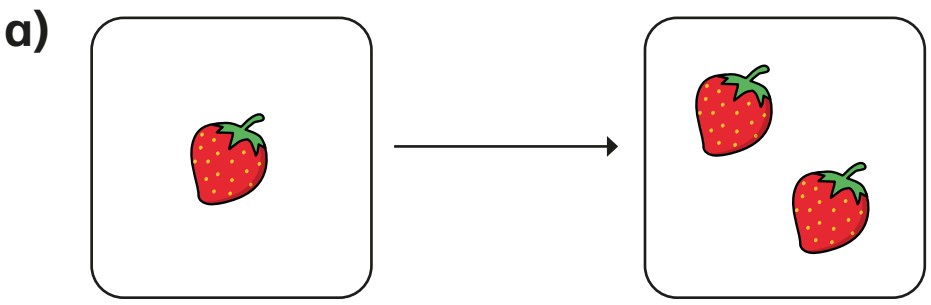


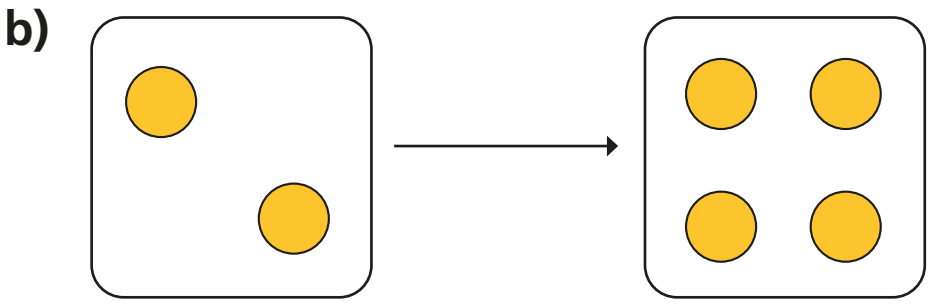
# Make doubles

I Complete the sentences.

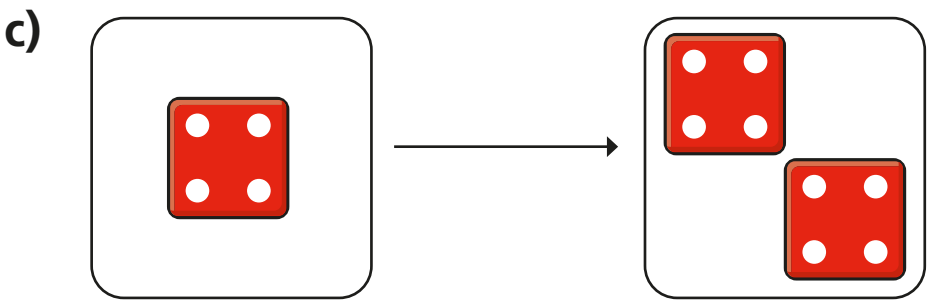
Use the pictures to help you.



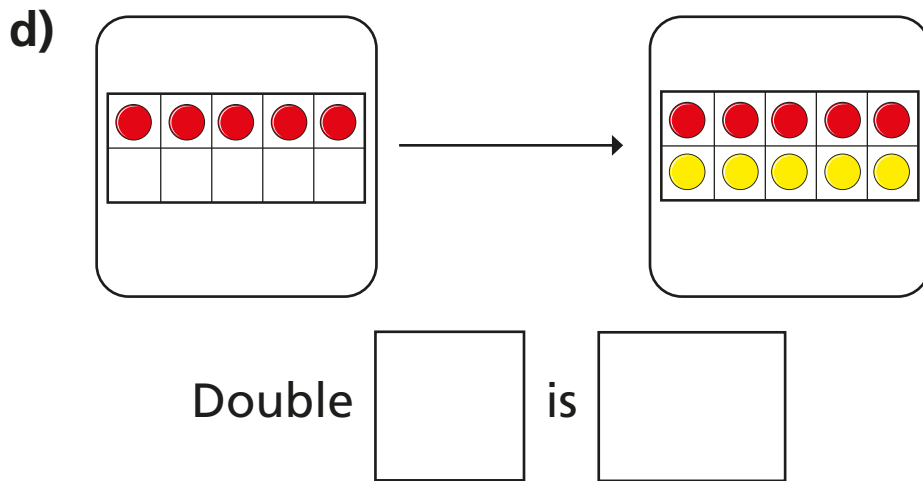
Double 1 is



Double 2 is



Double  is



**2** Match the doubles to the additions.

Double 3

$6 + 6$

Double 6

$7 + 7$

Double 10

$3 + 3$

Double 7

$10 + 10$

**3** Fill in the gaps.

a) Double 15 is

b) Double 11 is



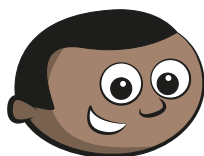
c) Double 12 is

d) Double 20 is

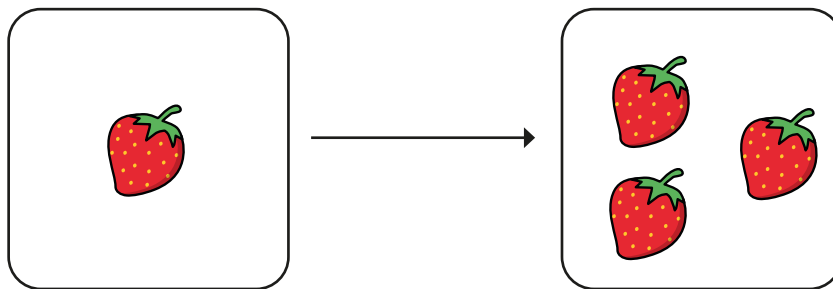
e) Double  is 8

f) Double  is 16

4



I have doubled the number of strawberries.



Do you agree with Mo? \_\_\_\_\_

Talk about it with a partner.

