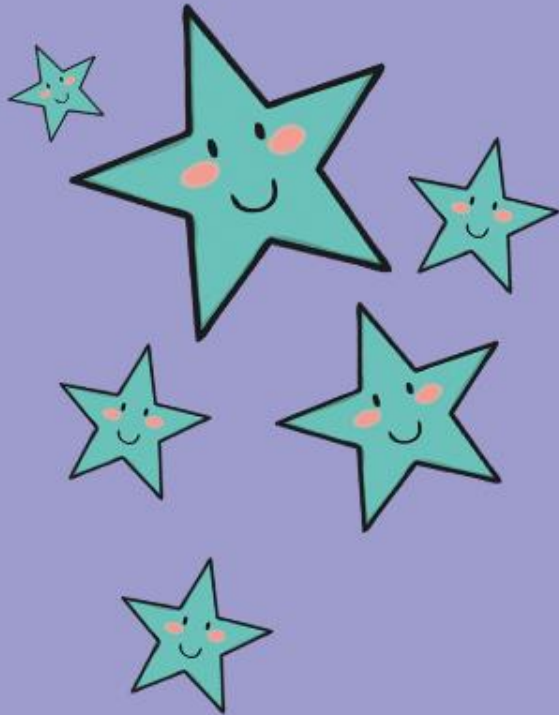


Phase 5 Quick Read

wh



A cluster of seven light green, five-pointed stars with simple black outlines and small orange dots for eyes, arranged in a loose pattern on the left side of the page.

/wh/ that makes the 'w' sound

A word card with a white background and rounded corners, set against a purple gradient background. The word "Whack" is written in a large, bold font. The letters "w" and "h" are red, while "a", "c", and "k" are black. To the left of the word, there are several light green, five-pointed stars with simple faces (eyes and a smile).

Whack



When

A word card for the word 'whip'. The word is written in a cursive font, with 'wh' in red and 'ip' in black. To the left of the word are several light green stars of various sizes, each with a simple smiley face. The background is a light blue gradient.

whip

The word "wheel" is written in a red, cursive font. The letters "h", "e", and "e" are written in a black, sans-serif font. The word is positioned in the center of the page. To the left of the word, there are several light green, five-pointed stars with simple faces, arranged in a cluster.

wheel

The word "which" is written in a cursive font. The letters "w", "h", and "i" are red, while "c", "h", and "h" are black. The word is positioned in the center of the page. To the left of the word, there are several light green, five-pointed stars of varying sizes. Each star has a simple face with two dots for eyes and a curved line for a smile. The stars are scattered around the word, with some overlapping it.

which

The word "where" is written in a large, bold font. The letters "w", "h", and "e" are red, while "r", "e", and "e" are black. To the left of the word, there are several light green, five-pointed stars with simple faces, arranged in a cluster.

where

The word "whistle" is written in a playful font. The letters "w" and "h" are red, while "i", "s", "t", "l", and "e" are black. To the left of the word, there are several light green, five-pointed stars with simple faces, some overlapping the letters.

whistle

The word "Whenever" is written in a large, black, rounded font. The letters "wh" are highlighted in a bright red color. The text is positioned on the right side of a white rounded rectangle. To the left of the text, there are several light green, five-pointed stars with simple faces, scattered across the white background.

Whenever



why

A white rounded rectangular card on a purple background. The word "whisper" is written in a large, bold font. The letters "w" and "h" are red, while "i", "s", "p", and "e" are black. The letter "r" is also black but appears to be a different style or is partially obscured. To the left of the word, there are several light green stars of various sizes, each with a simple smiley face. The stars are scattered around the "wh" part of the word.

whisper



white



what

The word "when" is written in a large, bold font. The letters "w", "h", and "n" are red, while the letters "e" and "n" are black. To the left of the word, there are several light green, five-pointed stars of varying sizes. Each star has a simple, smiling face with two dots for eyes and a curved line for a mouth. The stars are scattered around the word, with some overlapping it.

when