



Classification (Part 1) Activity Sheet

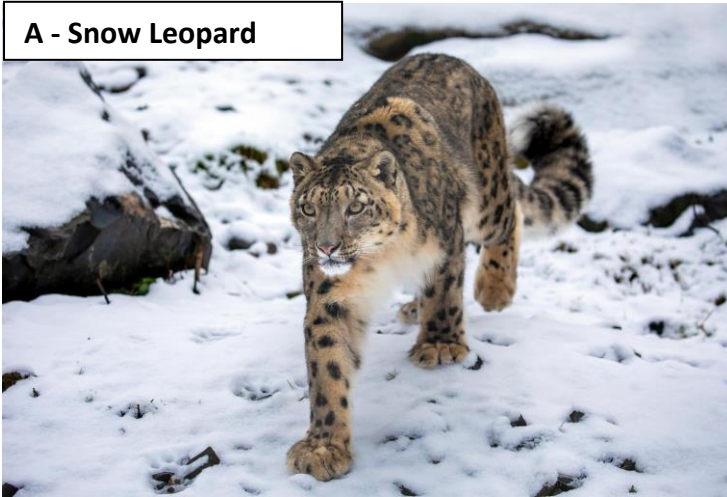
Welcome back to our online lessons! This week we will be exploring how we group different animal species. We will explore the differences between vertebrates and invertebrates and start to discuss the differences between fish, amphibians, reptiles, birds, and mammals.

You do not need to print this activity sheet. All you will need is some paper and some pencils.

Task 1: Invertebrate or Vertebrate?

In the video today we discussed the difference between a vertebrate and an invertebrate. Look at the pictures below. Decide which animals are vertebrates and which are invertebrates. 😊

A - Snow Leopard



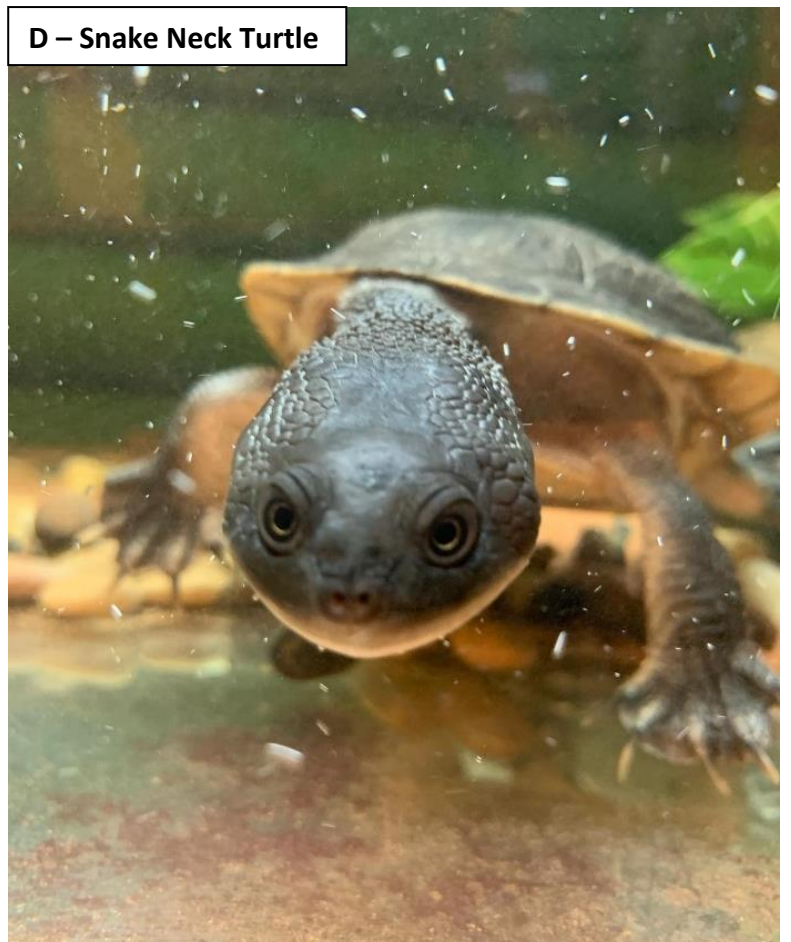
B - Corn Snake



C - Macleays Spectre Stick Insect



D - Snake Neck Turtle



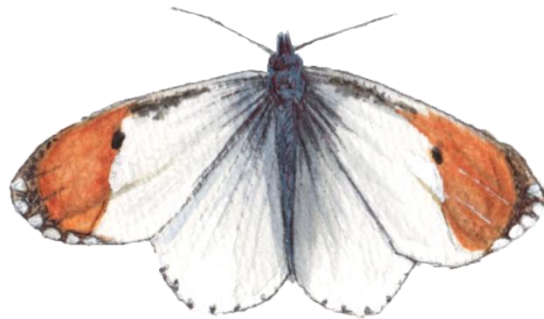
E - Train Millipede



Task 2: Wild invertebrates

Time to look outside. Can you see any invertebrates living in your garden or in a local woodland/park? Try to sketch the first two invertebrates that you find. Can you identify what kinds of invertebrates you have seen?

Please make sure you are always careful when looking for these small animals. We never want to destroy their habitat or cause any harm. 😊



Task 3: Fish Sketch

Time to get sketching! Choose from one of the three kinds of fish listed below and create your best artists impression. Label your drawing with all the characteristics that make this animal a fish (think gills). Is your chosen fish from freshwater habitats or saltwater?

PIKE

COD

SARDINE

Task 4: Invertebrate Habitat Creation

Now it is time for you to create a safe space for some invertebrates. This does not need to be anything fancy! Get out into your garden or school playground and get busy making some bug hotels (check out this website for some brilliant tips and instructions - <https://www.conservationhandbooks.com/nature-activities/bug-hotel/>) or dead wood piles (<https://www.rspb.org.uk/birds-and-wildlife/advice/gardening-for-wildlife/dead-wood-for-wildlife/>).

If you are doing this in a public space (for example woodland) the dead wood piles may work best! Try convincing parents or responsible adults to leave the grass longer in some parts of their garden. Get thinking and get creative. Always make sure you are staying safe and you have the help of a responsible adult when completing this task 😊.

