

Calderwood Nursery

#BeyondTheDream

Contents

Section 1	Nursery Information	Page 1,2,3
Section 2	Into Calderwood Nursery	Page 4
Section 3	Calderwood Couture (Dressing for Nursery)	Page 5
Section 4	Calderwood Café (Snack & Lunch)	Page 6
Section 5	Calderwood Curriculum	Page 7
Section 6	Assessment and Transition	Page 8
Section 7	Calderwood Communication	Page 9
Section 8	Calderwood Cares (Health and Wellbeing)	Page 10
Section 9	General	Page 11

Section 1: Nursery Information

Welcome to Calderwood Nursery. We hope that you will find this handbook provides you with some of the information and advice you will need to ensure that you and your child have a happy and positive experience at our nursery. If you require any further information, please contact us and our staff will be able to answer any questions you may have and will be happy to help you in any way we can. Please refer to this handbook before your child starts and during their time with us at nursery.

Contact Information

Calderwood Primary School & Nursery 1 Nethershiel Road East Calder EH53 0GU	Contact Number: 01506 280060 Direct Number (after 4pm/Holidays): 01506 280070 Website: https://calderwoodprimary.westlothian.org.uk Blog: https://blogs.glowscotland.org.uk/wl/calderwood/ Twitter: @Calderwood_Pri Email: wcalderwood-ps@westlothian.org.uk
--	---

Provision – Flexibility and Choice

Calderwood Nursery Class offers both morning, afternoon and full day sessions setting over 50 weeks. Each session is attended by a mix of pre-school and ante pre-school children.

The setting is closed for two weeks over the Christmas period. However, other holidays can be taken at any time throughout the year, but we request that parents/carers inform the nursery of **ALL** absences – please call the school office or direct nursery number by 8:45am in order to comply with our 'Safe Arrivals Policy'.

Option 1 50 Weeks – AM Session Mon - Thurs: 7.47am – 12.30pm Friday: 8.00 – 11.54am	Morning Sessions DROP OFF - Please arrive no later than 9:00am PICK UP – Please arrive at 12:20pm
Option 2 50 Weeks – PM Session Mon - Thurs: 12.30pm – 6.14pm	Afternoon Sessions DROP OFF - Please arrive no later than 1:00pm
Option 3 50 Weeks – 2x Full Day sessions plus one addition short session Choose 2 Full Days - 8am – 6pm Also one session: Mon – Thu 12.45 – 16.05pm or a Friday am session 8:00 – 11.20am	Where the setting cannot offer an additional session (this is determined by pupil placement), the balance of hours (which will vary depending on the days of attendance) may be used with a partner provider/childminder.



BEYOND THE DREAM

CREATIVE CARING CONNECTEDNESS

OUR CURRICULUM RATIONALE

OUR AIMS



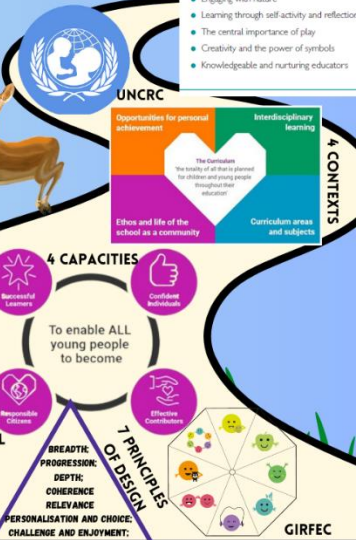
OUR DRIVERS

- Positive partnerships and relationships with all
- High quality agile, child-led, play-based curriculum
- Stimulating and challenging learning, teaching and assessment
- Nurturing, autonomous culture and ethos
- Quality transitions, into and beyond nursery
- Personalised support which meets the needs of all

Froebel's key principles

- Freedom with guidance
- Unity, connectedness and community
- Engaging with nature
- Learning through self-activity and reflection
- The central importance of play
- Creativity and the power of symbols
- Knowledgeable and nurturing educators

Fig 1: Friedrich Froebel 1782-1852



Our Values

- **Creativity** – *noun* - the use of imagination or original ideas to create something; inventiveness.
- **Caring** – *adjective* - displaying kindness and concern for others.
- **Connectedness** – *noun* - a feeling of belonging to or having affinity with a particular person or group.

Our Vision

To Go Beyond the Dream

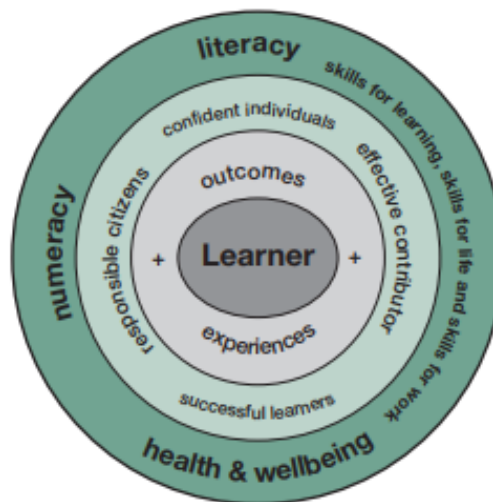
As a staple of the new Calderwood community, Calderwood Nursery is built on connectedness and acceptance of every child's uniqueness. All children are challenged to be curious, autonomous and choose their learning within a caring, creative environment. We support them to develop the skills, resilience and confidence to go beyond achieving their dreams.

Our Aims

- Culture and Ethos
 - To create a nurturing and autonomous environment where wellbeing, GIRFEC and rights of the child are enshrined throughout and success and achievement is celebrated by all
- Curriculum & Pedagogy
 - To use effective self-evaluation to design a high quality agile, child-led, play-based curriculum which encompasses creativity and skills for life learning and work, making use of outdoors and indoors
- Learning, teaching and assessment
 - To use effective assessment and tracking to 'build on what the child already knows' and provide progressive, stimulating and challenging learning spaces, interactions and experiences, involving children and parents, that will develop curiosity and creativity
- Personalised Support
 - To provide the appropriate support and challenge, engaging with all agencies, that meets the unique needs of all children to ensure they realise their potential
- Partnerships
 - To nurture positive relationships with all stakeholders and create a sense of belonging within our school community
- Transitions
 - To provide effective communication and partnership working to support transitions for all children and share tracking and monitoring progress to ensure progression of learning

Principles for Curriculum Design

- Challenge and enjoyment
- Breadth
- Progression
- Depth
- Personalisation and choice
- Coherence
- relevance



GIRFEC Wellbeing Indicators

- Safe
- Healthy
- Achieving
- Nurtured
- Active
- Respected
- Responsible
- Inclusive

What does this look like?

Culture and Ethos

- Enabling environments - interesting spaces indoors and outdoors
- Quality, sensitive interactions
- Experiences meaningful and in context
- Focus on GIRFEC, UNCRC, and nurturing approaches
- Celebrating successes and achievements

Curriculum and Pedagogy

- Frobel principles, engaging with nature, importance of play, creativity, relationships, autonomous learners, unity and connectedness
- Child-led learning offering choice
- Outdoor Play – nature kindergarten
- Forest School approaches
- Open ended materials and resources – loose parts
- Highly skilled and trained staff

Learning, teaching and assessment

- Skills-based learning through quality play opportunities
- Child-led, adult-led, child-initiated, adult-initiated experiences
- Quality responsive and intentional planning that meets the needs of all learners
- Consultative planning approach involving champions children, parents/carers

- Using the progression pathways and WL tracking and monitoring to ensure progressive, challenging experiences for all
- Effective use of OJL to record key observations of learning and reflect child's personal learning journey

Personalised Support

- Personal Plans
- GIRFEC planning
- CPM's
- IEP's
- Milestones to support children with ASN
- Partnership working

Partnerships

- Family learning opportunities
- Parental engagement in supporting learning
- Parental involvement in life and work of ELC
- School community and wider community
- Links across early level
- External agencies

Transitions

- Effective programmes into nursery, into Primary 1, daily transitions
- Effective communication with all stakeholders e.g. sharing tracker data

Section 2: Into Calderwood Nursery

Helping your child prepare for nursery

- Talk about coming to nursery together and the enjoyable time they will have.
- After you and your child have had the opportunity to watch the nursery tour, you can refer to this with your child on a regular basis before they start.
- Delay talking about leaving them.
- If you are worried about how your child will settle, try not to let them sense your anxiety.
- Be guided by staff when to leave your child.

Starting and settling your child in nursery

You and your child will be welcomed by a member of staff. At the start of each session parents/carers are asked to:

- Support your child to find and put their name on the self register boards
- Sign your child in on their clan register and select their lunch choice
- Support your child transitioning into nursery.

Once your child has settled into the nursery routine we encourage the children to become independent as quickly as possible by getting themselves ready with minimum adult support.

You may leave the nursery if your child has settled and return at the time arranged between yourself and staff. Some children may settle quicker, while others may need a bit longer. Staff and parents/carers may negotiate the length of time needed.

What your child needs to bring

Your child should bring a change of clothes, wellies to play outside and arrive with shoes that they can inside and outside in.



play both

Taking your child to and from nursery

To make the nursery a secure place for children, the gates and main door are secured and we will use a password system – please provide the nursery with a password.

Every child must be collected from nursery by a named adult who **must be over 16 years of age**. If someone else is collecting your child, please **always inform** nursery staff, or telephone the school as this is in the interests of your child's safety, we may refuse to hand over any child if we are unsure of who has come to collect them

Emergency contacts/Emergency closure

It is important for us to have the names, addresses and telephone numbers of two emergency contacts. Parents/carers must ensure that this information is kept up to date. In particular, this applies to mobile phone numbers.

If a child takes ill at nursery, has an accident or it becomes necessary to close the nursery, every effort will be made to contact parents/carers in the first instance. However, if parents/carers are not available then the emergency contact will be informed.



Section 3: Calderwood Couture

Comfortable Casual:



- Navy sweatshirt **or** navy sweatshirt jumper with white Calderwood Nursery logo
- White polo shirt **or** white polo shirt with navy Calderwood Nursery logo; **OR** White polo shirt **or** navy polo shirt **or** navy polo shirt with white Calderwood Nursery logo
- Navy tracksuit bottoms *or* navy tracksuit bottoms with Calderwood Nursery logo; **or** navy leggings **or** navy shorts; any bottoms that are comfortable

- Please wear nursery shoes that are suitable for outdoors
- Indoor shoes to change into when playing indoors

* We encourage children to be independent so please purchase shoes that they can easily put on and off themselves.

Organised for Outdoors:

- Wellies that can left in nursery
- Waterproof suit **or** jacket and trousers (We can support with supplying these if required)
- A clearly labelled suncream to be stored in nursery

You can purchase our uniform from:

[Calderwood Nursery - Schools \(border-embroideries.co.uk\)](http://border-embroideries.co.uk)

Personal Items

Personal toys should be left at home as lost and damaged toys can cause great distress.

Section 4 – Calderwood Café



Breakfast/Snack

Your child will be encouraged to try a variety of foods at nursery. We aim to promote healthy eating and offer a nutritionally balanced snack which always includes a wide range of fruit and vegetables. We offer either milk or water to drink.

The children are consulted on their choices for snack and healthy snacks are prepared each day during the morning and afternoon sessions for the children to select, promoting their independence skills and recognising their right to be listened to.

Lunch

All children are entitled to a free meal as part of the expansion of early learning and childcare.

Children attending full day or morning or afternoon sessions, will receive a cooked lunch, served between 11.30-1:00pm. If for any reason you do not wish your child to have a meal, please let a member of staff at the nursery know and provide a packed lunch for your child.

Children can also bring a packed lunch from home. Packed lunches will be stored on a trolley, to keep the food fresh we **require a freezer block/ice pack in your child's lunch box**. Where possible we discourage the inclusion of nuts and peanuts in food in our Nursery and would request that you check your child's lunch does not contain foods that contain nuts or peanuts.

If you would like your child to have a school lunch, you can order this in the morning on arrival on your child's register. Each week an email form allows those who attend in the afternoon session to select their lunch choice in advance so we can place all lunch orders to the kitchen in the morning.

Section 5: Calderwood Curriculum



designed

Calderwood Nursery promotes a child centred approach to learning. Learning opportunities are in a way that makes learning creative, relevant, lively, motivating and fun.

The nursery curriculum is based on a process of growth and experience where your child is the **active learner**, but where nursery staff provide the appropriate experiences in line with The Curriculum for Excellence.

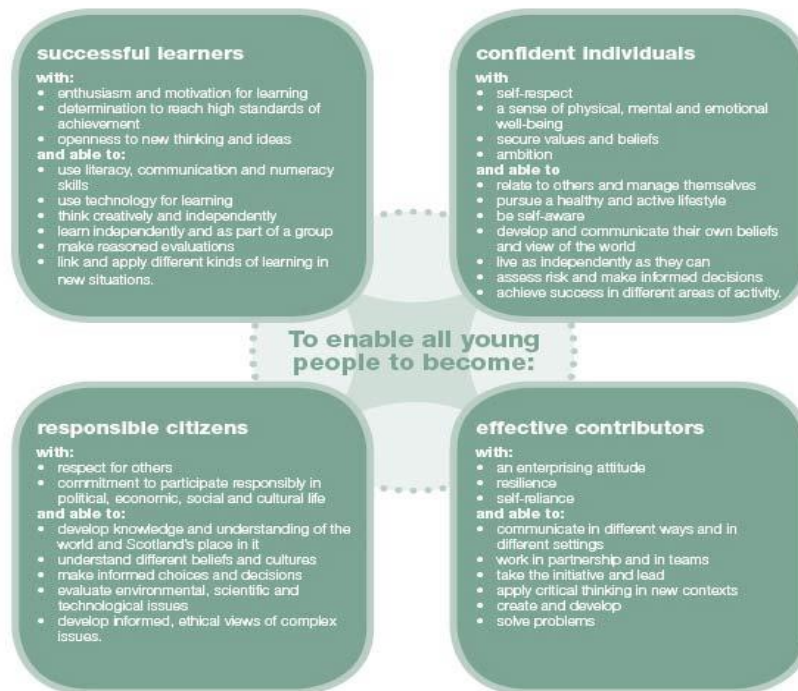
Curriculum for Excellence in the nursery

The Curriculum for Excellence is implemented in all schools and nurseries within Scotland. It ranges from ages 3-18 and aims to ensure that all children and young people in Scotland develop the attributes, knowledge and skills they will need to flourish in life, learning and work.

The knowledge, skills and attributes learners will develop will allow them to demonstrate four key capacities – to be successful learners, confident individuals, responsible citizens and effective contributors.

In nursery the children will begin at the Early Level of Curriculum for Excellence. We will provide active learning opportunities in all curricular areas. Each child will have a personal Learner's Journey which will record and gather some of their nursery experiences. When children move on to primary 1 the Learners Journey will go with them so that children can complete the early level.

Learner's Journeys are available at all times for parents/carers to view and can be accessed online.



Find out more: For further information parents/carers can find out more at:

www.parentzonescotland.gov.uk

www.curriculumforexcellencescotland.gov.uk

www.LTScotland.org.uk

Section 6: Assessment and Transition

Throughout your child's time at nursery they will be involved in ongoing informal assessments. These assessments provide information on what your child can do, which is the basis for appropriate future planning. Evidence of your child's learning and some items of their work will be kept in your child's individual Seesaw profile which can be accessed online. Children have access with a staff member to their Seesaw profile and can comment and add to their observations. Parents/carers will be given a login for Seesaw and can access their child's profile at any time.

Transition



Transfer from nursery to Primary 1 can be a big step for children who are entering a new environment, but we try to make the transition a smooth, gradual and happy one. This will be in the form of sways and lots of information online with a visit to the class teacher before the child's commencement date.

Calderwood Chums (Buddies)



We will run a buddy programme (Calderwood Chums) that your child will be involved in during their pre-school year. Each child will be allocated a primary 6 chum who will visit the child at designated times to interact with their chum through the school day. When your child moves to Primary 1 their chums will accompany them to the playground and during other activities to help your child with the transition into Primary 1.

Section 7 – Calderwood Communication

We aim to encourage a close relationship between the Nursery and parents/carers on all relevant matters. We try to do this in a number of ways.


Keeping Connected @ Calderwood Nursery

Group Call

It is important that the office have a record of your most up to date email address and phone number as we regularly use "Groupcall" as our more traditional form of communication. We use email to send information about events, news and important dates.

Calderwood Chronicle

This is our weekly newsletter which is sent via groupcall email. This keeps our parents and families up to date with nursery life.



Calderwood Nursery

Seesaw

We use seesaw to capture pupil learning and to involve parents and families in their child's learning.

During your child's ante-pre school year, your child will receive a minimum of 4 observations each term.

Aug – Dec	Jan-April	May-Aug
2 language	2 language	2 language
2 maths	2 maths	2 maths
2 H&WB	2 H&WB	2 H&WB
1 other area	1 other area	1 other area

During your child's ante-pre school year, your child will receive a minimum of 4 observations each term.

Aug – Dec	Jan-Apr	May-Aug
1 language	1 language	1 language
1 maths	1 maths	1 maths
1 H&WB	1 H&WB	1 H&WB
1 other area	1 other area	1 other area

Website

Every school in West Lothian has a consistent style of website informing families of the same types of information. Our website will have feeds to our blog and X accounts, providing a one stop shop for information.

Blog

Our blog is a hub of activity and is updated with information from staff, children, management, parents and partners. It includes text, photos and videos about learning, events and news

Noticeboard

We share daily information such as menus, sign up sheets for events and more on our Nursery Noticeboard.

Section 8 - Health and Wellbeing

We have a "Group Call" system which sends automatic notification by text/voice message if your child is absent from nursery.

If your child is going to be absent it is important that parents/carers contact the nursery. If your child is in the morning or full day group parents **must make contact by 9am** and respond by 10.30 am at the latest to any message sent by the "Group Call" system. For children in the afternoon group parents/carers **must make contact by 1.30pm** and respond by 2.30pm at the latest to any messages sent by the Group Call system.

It is also important for this purpose that all contact numbers are kept up to date.

Personal Plans

Personal Plans are designed to ensure we meet the needs of your child as an individual and it's necessary to have a lot of detail to ensure we can do this and give the the best start to their time in nursery. These will be given out when the child starts nursery and should be returned as soon as possible.



Medication in the Nursery

Most children will at some point have a medical condition that may affect their participation in nursery activities. For many this will be short-term - perhaps finishing prescribed medicine. Others have medical conditions which, without help, could limit their access to nursery. Parents have prime responsibility for their child's health and should provide the nursery with information about their child's medical condition.

All medication must be handed to the Nursery Staff and will be kept in a locked cupboard. It is important that if required, your child has a labelled inhaler for nursery use. It is the parents' responsibility to ensure that these are renewed as necessary. Staff have a list of children requiring these. Any child who requires other medication on a regular basis may require a health care plan. Please contact the nursery staff to discuss this.

If your child is required to take any form of medication during nursery time, a form must be filled in by the parent. Forms are available from the nursery.

School Health Service

The following people visit the nursery: speech and Language Therapist, Educational Psychologist, School Doctor/Nurse, Health Visitor, Physiotherapist, Occupational Therapist and School Dental Service.

Other professionals can be called upon to support children and families if necessary.

Child Protection

Nursery Staff have all been trained in Child Protection procedures.

Section 9 – General

Concerns/Complaints Procedure

If you have any concerns or complaints regarding our service these can be addressed by the following procedure.

- In the first instance if a parent or carer feels they have cause for complaint they should speak to the nursery staff.
- The complaint will be taken seriously and dealt with as quickly as possible.
- If the complaint is not resolved the issue should be raised with the senior management team.
- Parents have the right to contact Education Services or the SCSWIS
If they feel their complaint is unresolved. This contact information is displayed in the cloakroom area.

Education services can be contacted at:

West Lothian Council
Educational & Cultural Services
Customer Care
Civic Centre
Howden South Road
Livingston
01506 775000

SCSWIS can be contacted at:

Comments and Complaints Co-ordinator
Compass House
11 Riverside Drive
Dundee
DD1 4NY Telephone 01382 207100