

Spring Missing Numbers

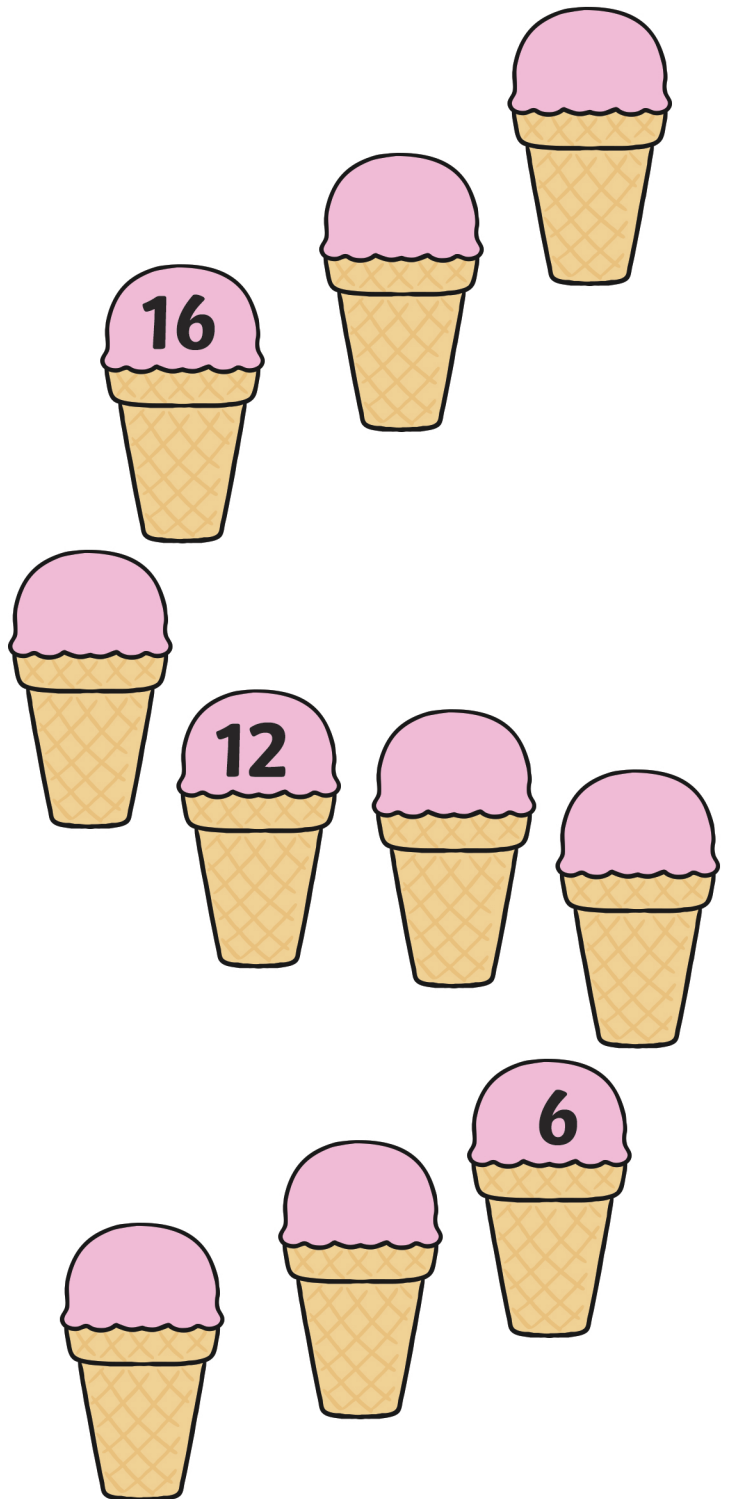
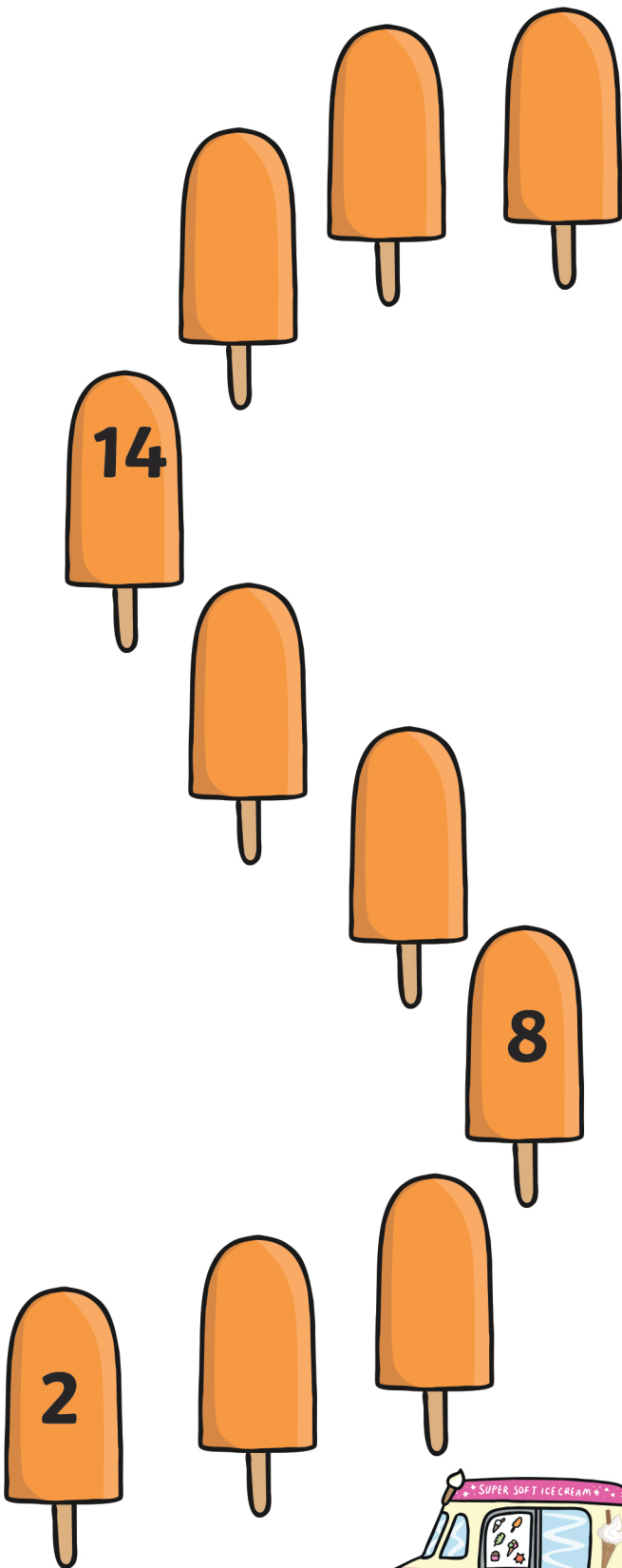
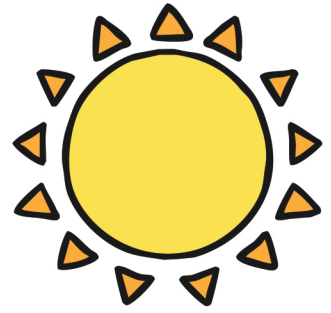
Counting in 2s



A collection of flowers arranged in two paths. The left path consists of blue flowers, and the right path consists of purple flowers. Each flower has a yellow center containing a number. The numbers in the blue path are 2, 10, and 18. The numbers in the purple path are 6, 12, and 16. There are three monarch butterfly illustrations scattered around the flowers.

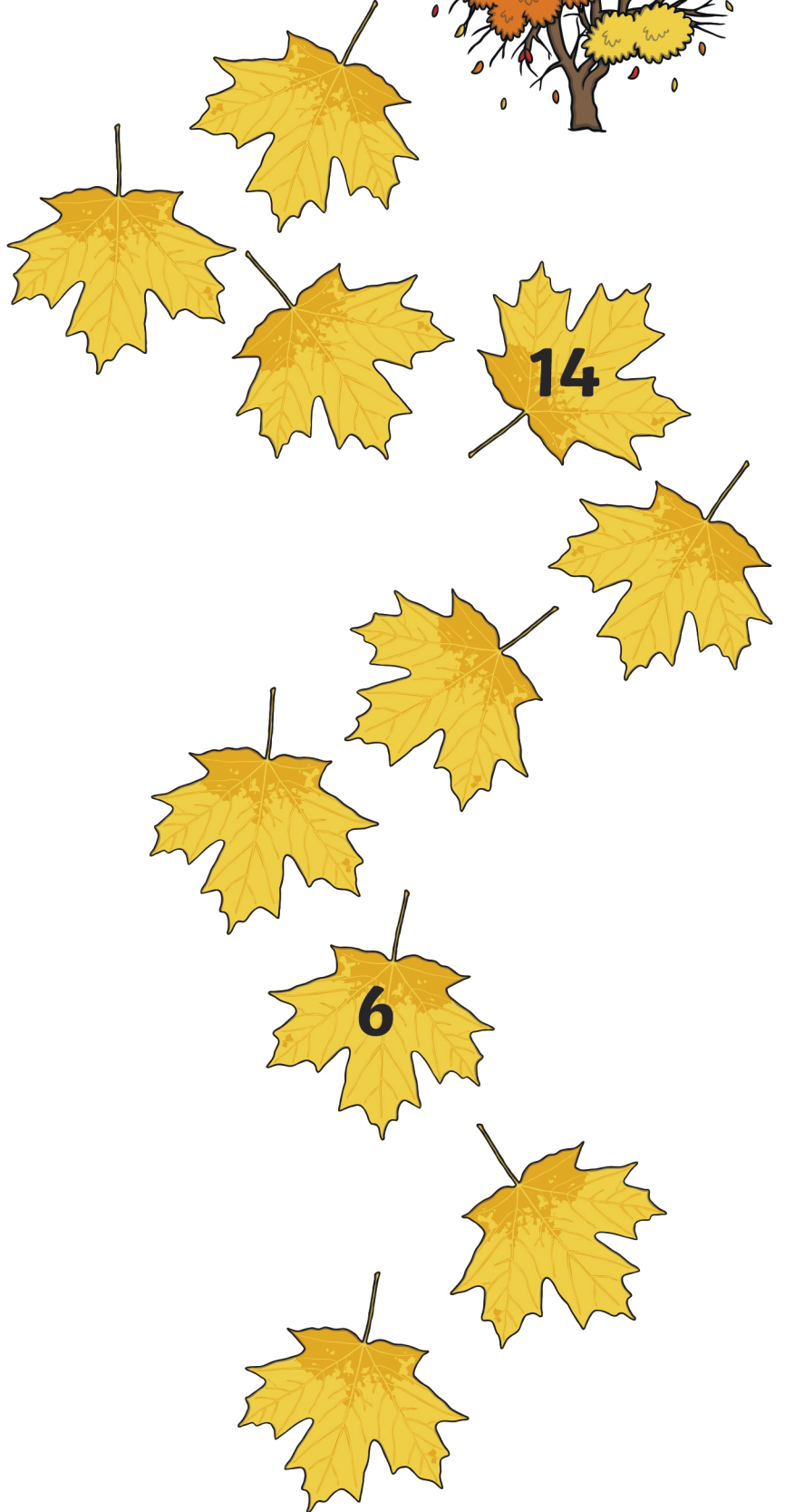
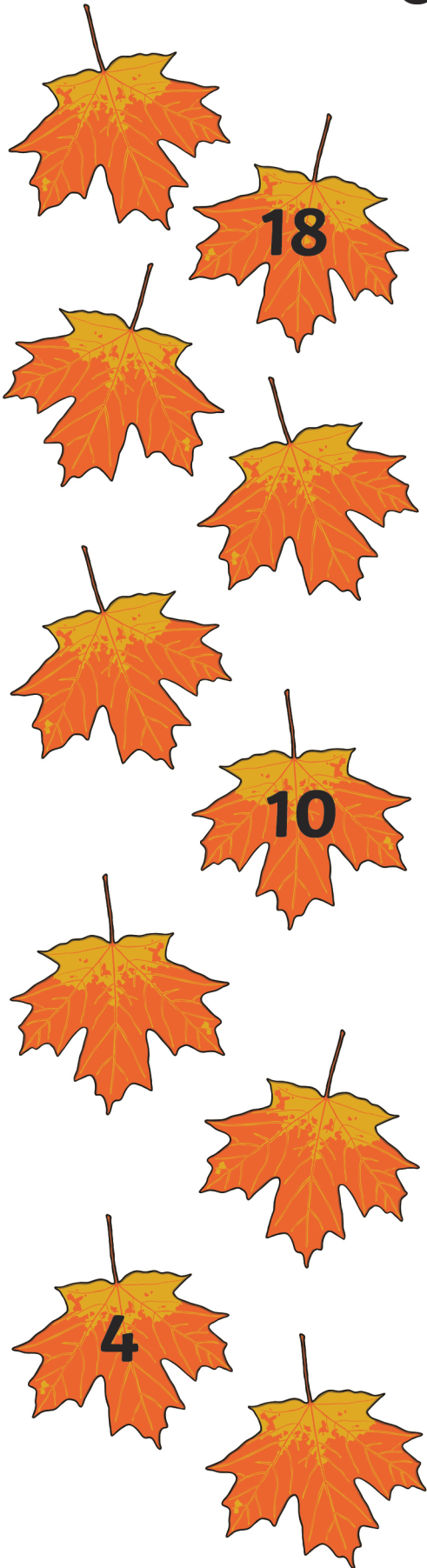
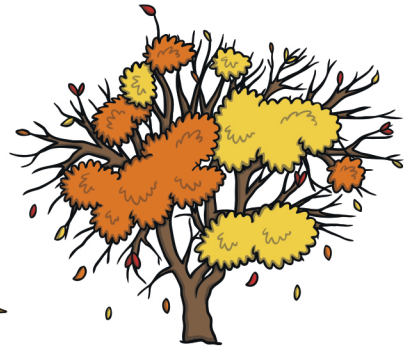
Summer Missing Numbers

Counting in 2s



Autumn Missing Numbers

Counting in 2s



Winter Missing Numbers

Counting in 2s



16 18

18 20

16 14

10 10 8

4 6 4

2 2