

Looking for shapes at home



Family Maths
Toolkit

You can be detectives looking for shapes that are all around us.

1. Can you find a square in the kitchen?
2. Can you find a rectangle in your bathroom?
3. Can you find a circle in your bedroom?
4. What other shapes can you see around your house?
Can you find a triangle anywhere in your house?
5. Can you draw what you have found?



Family comments:

Child comments:



Curriculum Link

2D shapes including
square, rectangle,
triangle, circle.

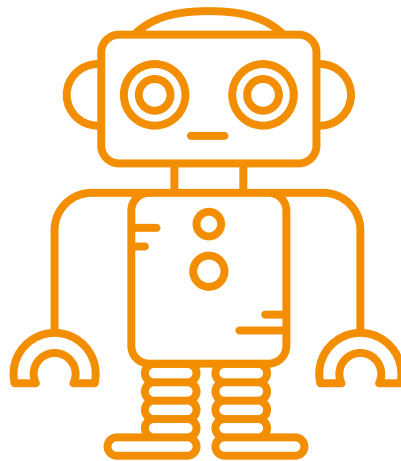
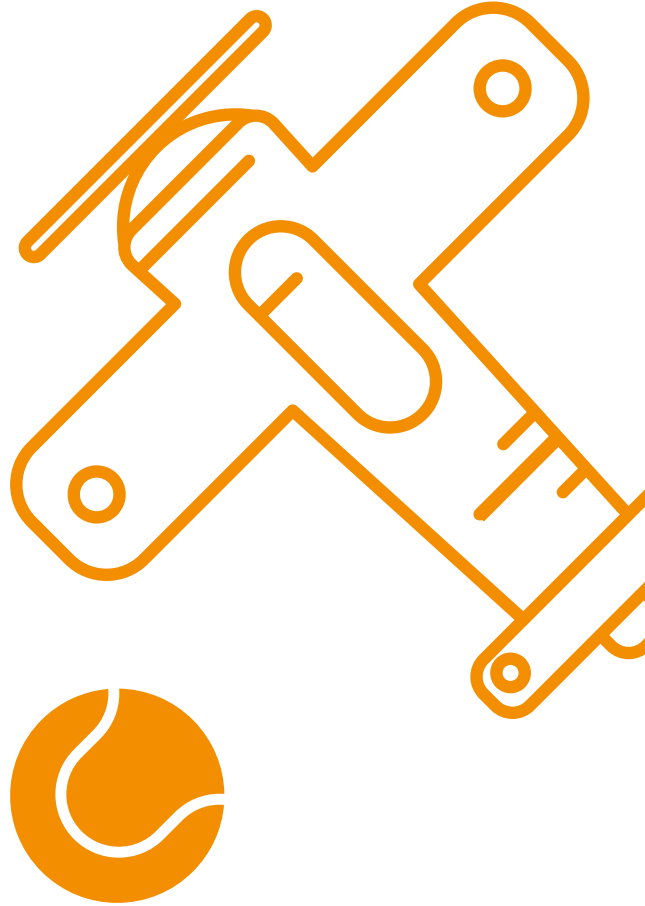
Choose 5 of your favourite toys.

Put them in order from shortest to tallest.
Are any taller than the length of your hand?

Now put them in order from lightest to heaviest.
Are they in the same order?
Which are in a different place?

Find 5 things in the food cupboard.
Estimate which will be the lightest and heaviest.
Feel them in your hands - were you right?

What is the lightest piece of food you can find?



Family comments:

Child comments:



Curriculum Link

Use and compare
measures using
non-standard units.

Numbers challenge



Family Maths
Toolkit

Do you have a clock in your house?

Can you read all the numbers?

Where else in the house can you find numbers?
Can you find some in every room in the house? What numbers can you find?

Look carefully, some of them might be hidden.

Write down some of the numbers you find and draw what they are on.



8 9 10 11 12

Family comments:

Child comments:



Curriculum Link

To read and write numbers to 20.

Sharing a picnic



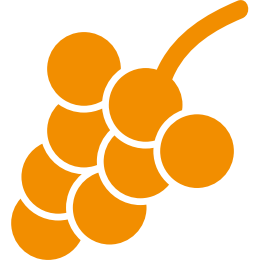
Family Maths
Toolkit

Think of a picnic which two children are going to share equally – what will they each have?

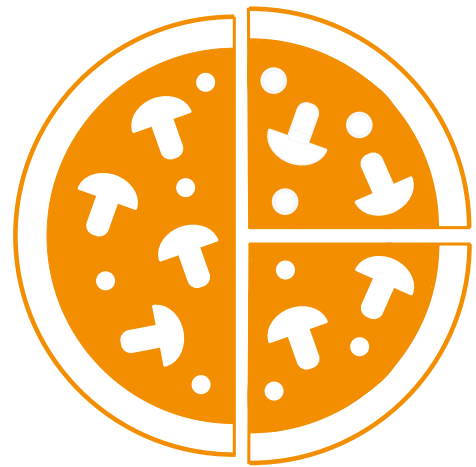
How could we share the pizza fairly?

What about a bowl of tomatoes?

A bunch of grapes? One apple? A cake?



What would you have in your picnic that could be shared with a friend? Draw a picture and show how it could be shared.



Family comments:

Child comments:



Curriculum Link

Recognise, find and name half as one of two equal parts; recognise two quarters are the same as a half.