

# EASTER EGG HUNT

How many Easter eggs can you find?



# BUNNY MASK

Make your own Easter masks!

## Supplies needed:

Card stock for your printouts  
Scissors | Glue stick | Tape  
Ribbon/String



Cut along the dotted line! ✂



### STEP 1:

Carefully cut out the mask (ask an adult to help you if you need).

### STEP 2:

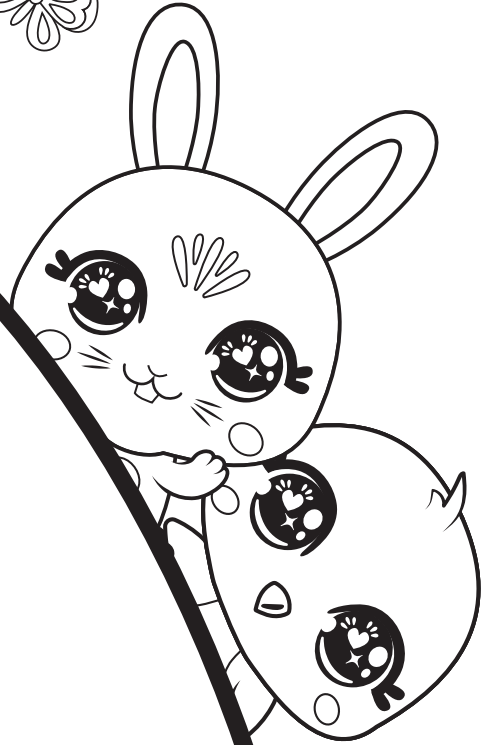
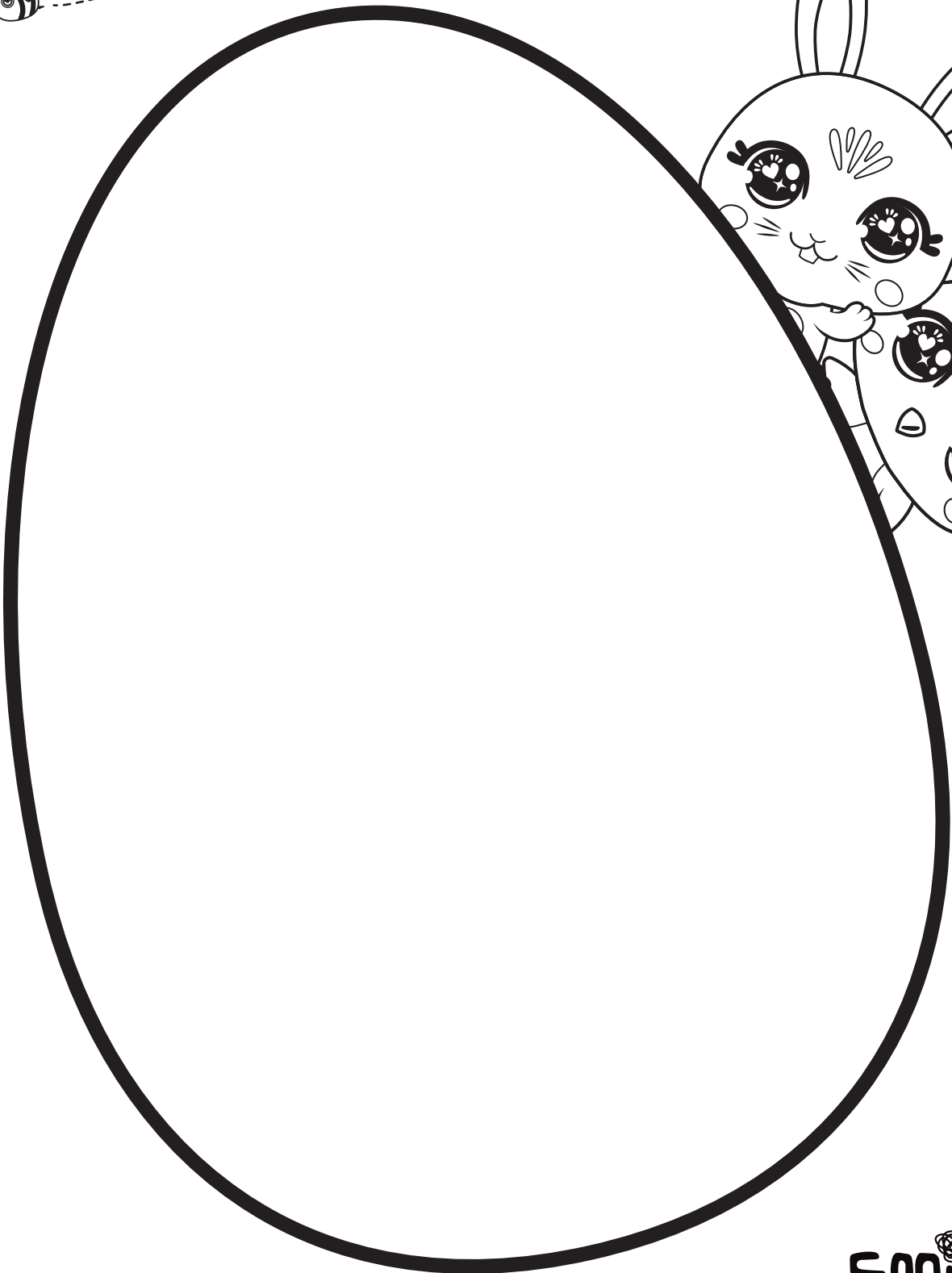
Attach a length of ribbon/string to either side of the mask. You can stick with masking tape for a firm hold.

### STEP 3:

Hooray! Your Easter bunny mask is ready to wear!



**Design and colour your own**  
**EASTER EGG**

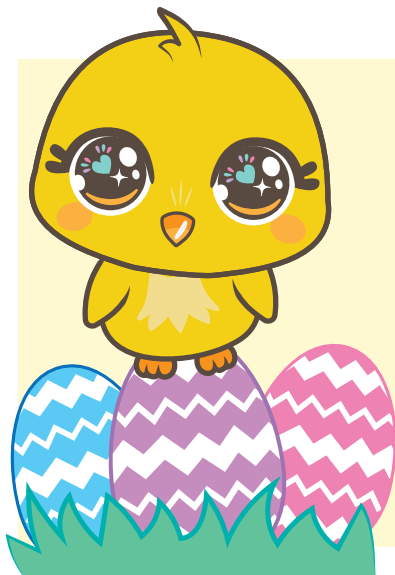
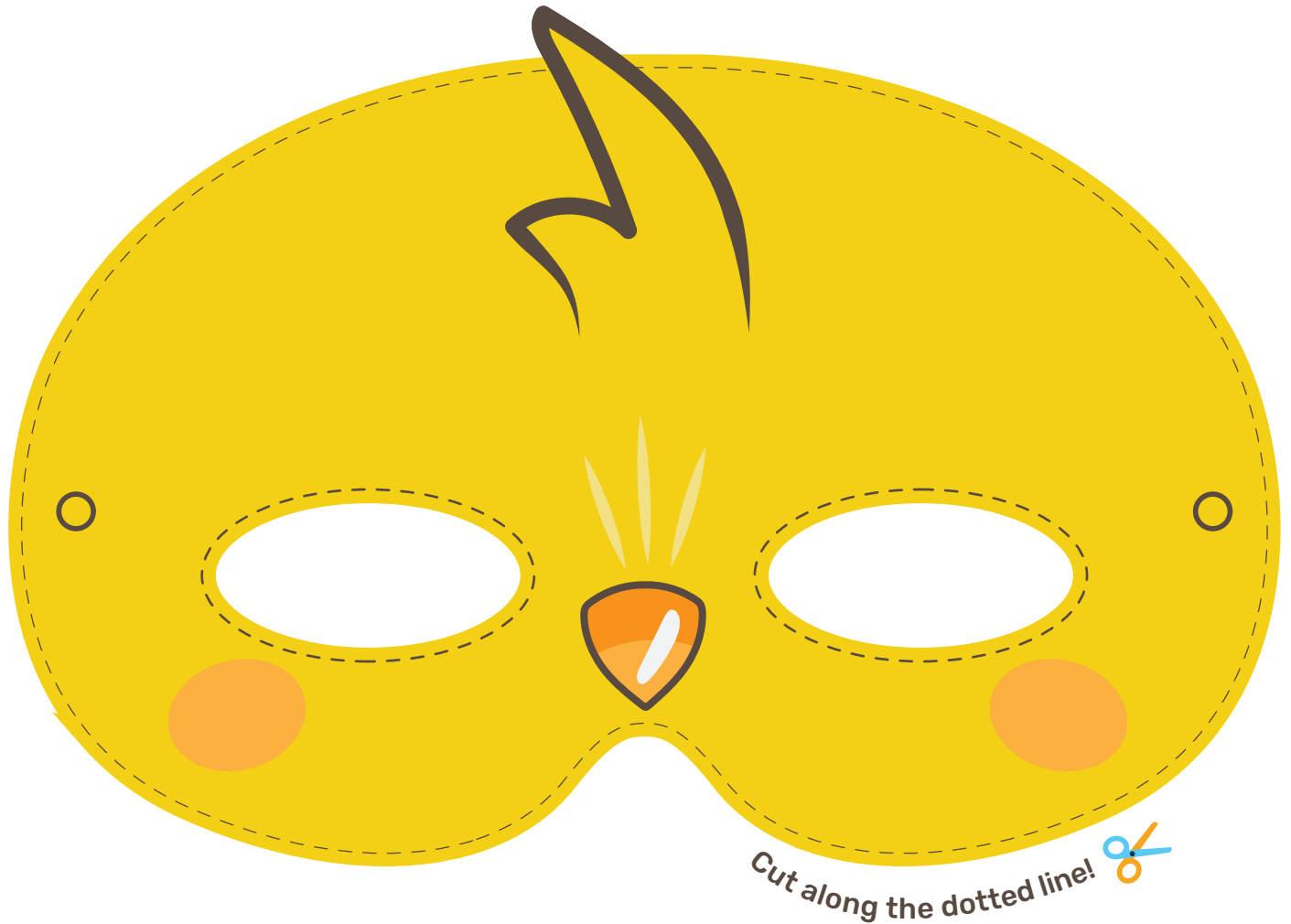


# CHICK MASK

Make your own Easter masks!

## Supplies needed:

Card stock for your printouts  
Scissors | Glue stick | Tape  
Ribbon/String



### STEP 1:

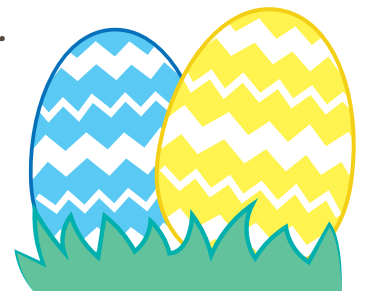
Carefully cut out the mask (ask an adult to help you if you need).

### STEP 2:

Attach a length of ribbon/string to either side of the mask. You can stick with masking tape for a firm hold.

### STEP 3:

Hooray! Your Easter chick mask is ready to wear!

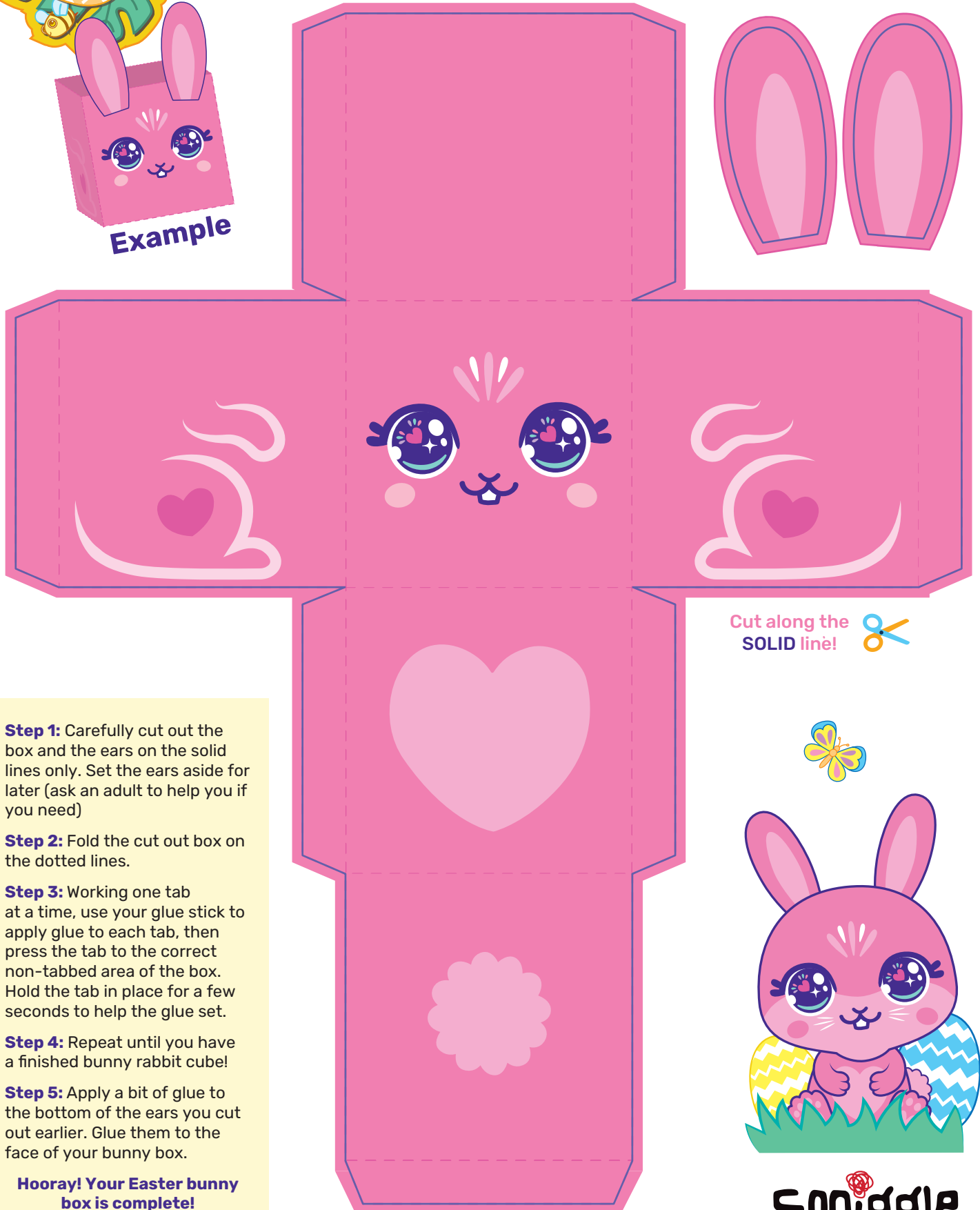




**Supplies needed:**  
Card stock for your printouts  
Scissors | Glue stick



**Example**



**Step 1:** Carefully cut out the box and the ears on the solid lines only. Set the ears aside for later (ask an adult to help you if you need)

**Step 2:** Fold the cut out box on the dotted lines.

**Step 3:** Working one tab at a time, use your glue stick to apply glue to each tab, then press the tab to the correct non-tabbed area of the box. Hold the tab in place for a few seconds to help the glue set.

**Step 4:** Repeat until you have a finished bunny rabbit cube!

**Step 5:** Apply a bit of glue to the bottom of the ears you cut out earlier. Glue them to the face of your bunny box.

**Hooray! Your Easter bunny box is complete!**

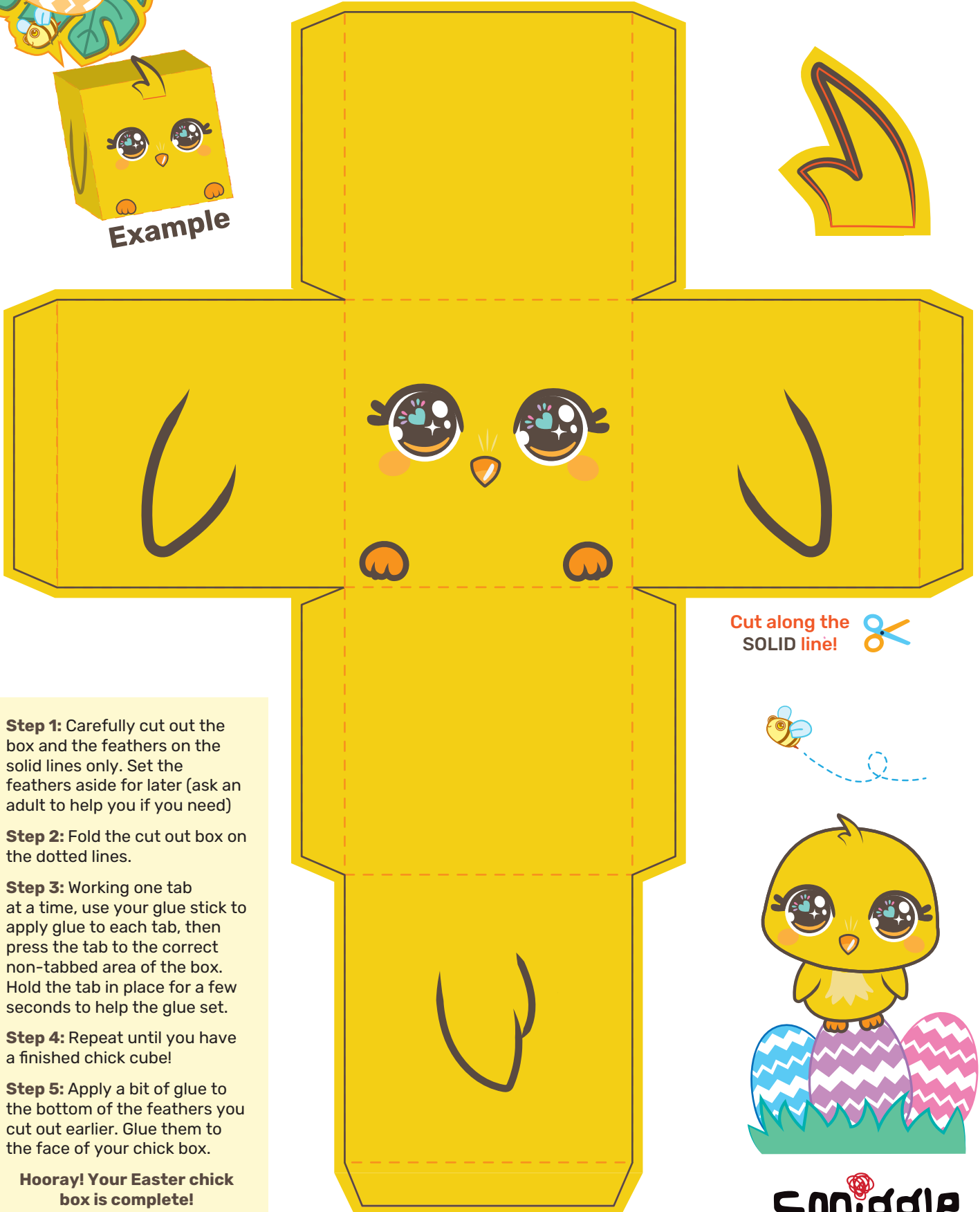




**Supplies needed:**  
Card stock for your printouts  
Scissors | Glue stick



**Example**



Cut along the **SOLID line!** 

**Step 1:** Carefully cut out the box and the feathers on the solid lines only. Set the feathers aside for later (ask an adult to help you if you need)

**Step 2:** Fold the cut out box on the dotted lines.

**Step 3:** Working one tab at a time, use your glue stick to apply glue to each tab, then press the tab to the correct non-tabbed area of the box. Hold the tab in place for a few seconds to help the glue set.

**Step 4:** Repeat until you have a finished chick cube!

**Step 5:** Apply a bit of glue to the bottom of the feathers you cut out earlier. Glue them to the face of your chick box.

**Hooray! Your Easter chick box is complete!**

