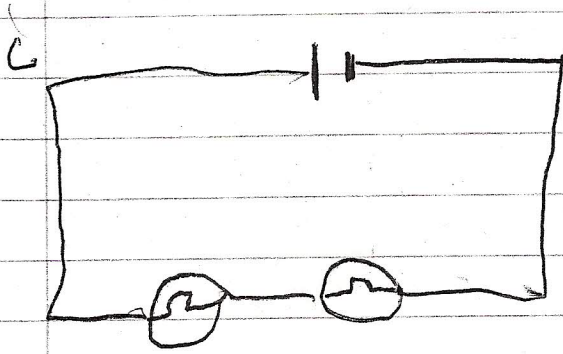


an ammeter  
 Meather  
 that is

a) A is a ~~ammeter~~  $\otimes$  ~~Battery~~  
 $\parallel$  = Battery

b) The light switch on  
 worst 1/5th



d)

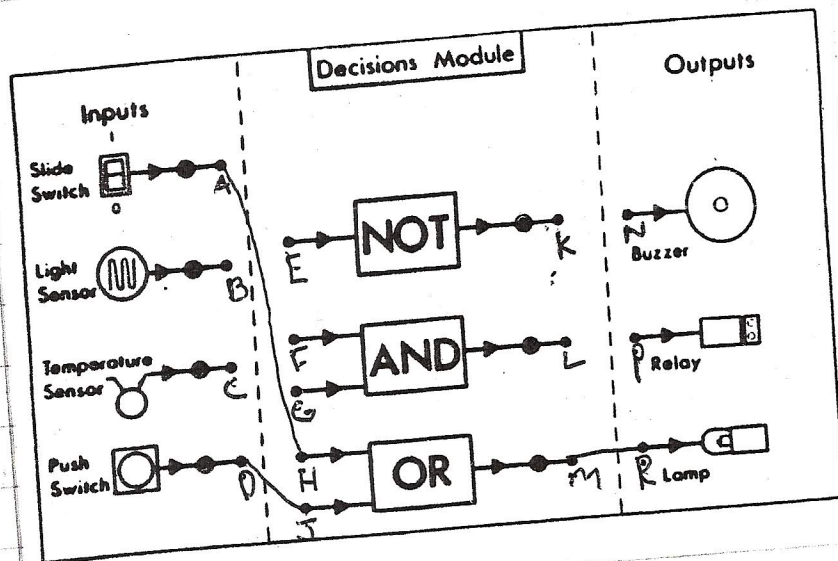
Pupil A

work completed in  
 2 periods  
 1hr and 20 minutes  
 at start of enquiry



This ~~is~~ output of the AND gate  
is a 1 its upper AND lower  
are at ( 1 )

The OR gate



This is very easy to set  
up and use when the slide  
switch is at 1 the lamp if  
it is at 0 you can use  
the push switch to turn it on  
and Pupil A

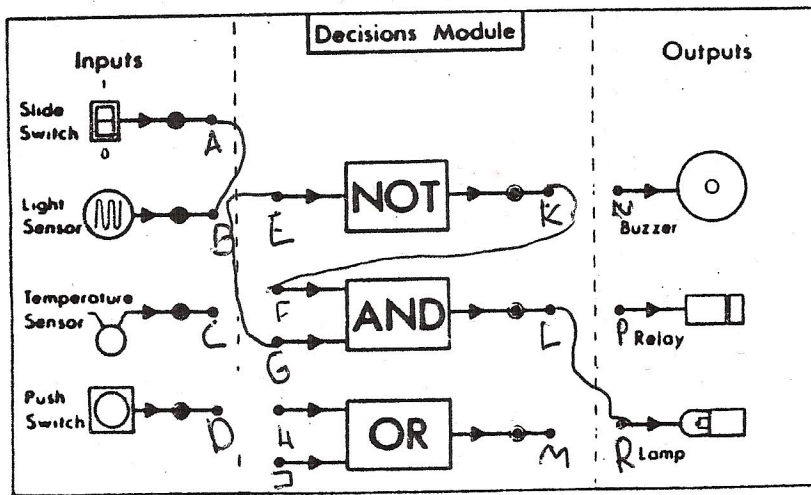
work completed in  
2 periods near  
end of enquiry

see over →



For the lamp to light, either of the switches can be on giving out a 1 this gate needs the top OR the bottom input to be at 1 to give out a (1) for the lamp to be on both the inputs have to be a 0

### A light operated circuit



This is a very easy set up you need Slide Switch at 1 and the Light sensor at 1 for it to work but when they are at 0 the light does not work