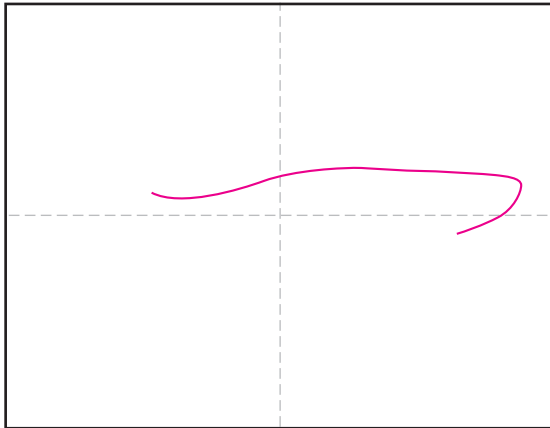
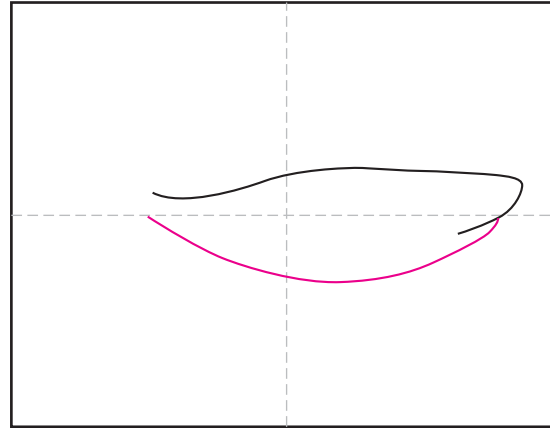


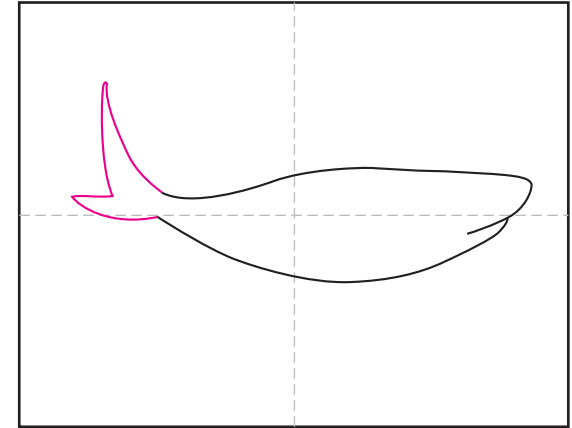
Draw a Shark



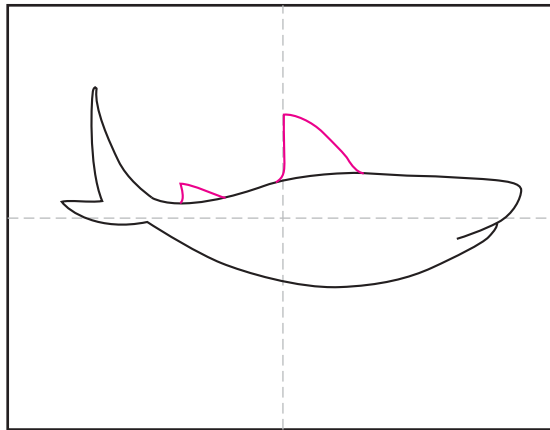
1. Start the shark body.



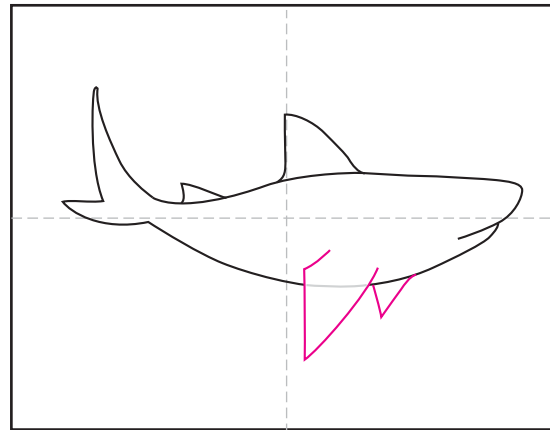
2. Add the belly.



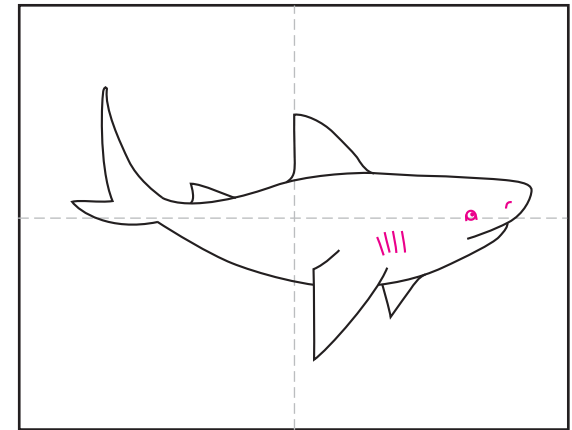
3. Draw the tail.



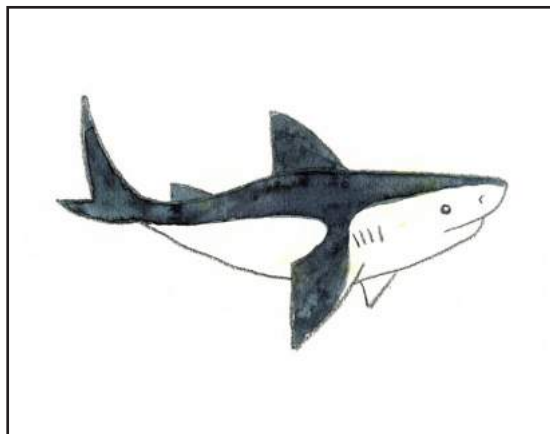
4. Add two dorsal fins.



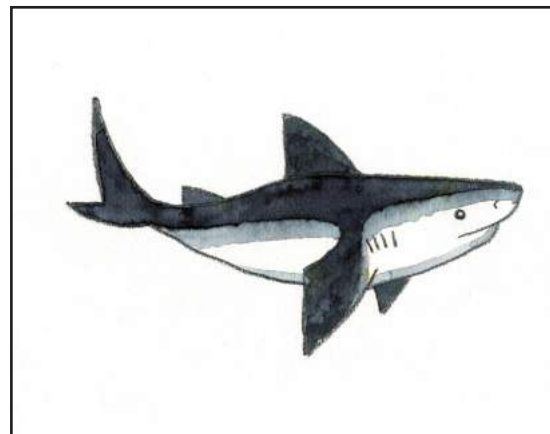
5. Add two pectoral fins.



6. Draw gill openings, eye and nose.



7. Trace drawing with a black crayon. Paint the top body black.



8. Add a tint stripe with a very watery black.



9. Use a white crayon to draw bubbles, waves. Paint the background an ocean blue.