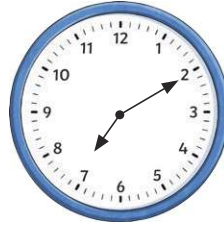


# Holiday Time!



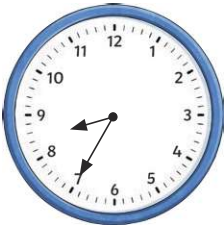
What time did the children get up?

---



What time did the children set off for the beach?

---



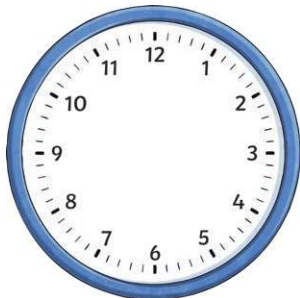
What time did the children stop at the service station for breakfast?

---

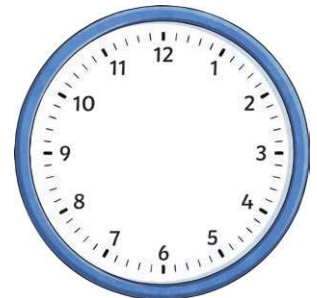


What time did the children arrive at the seaside?

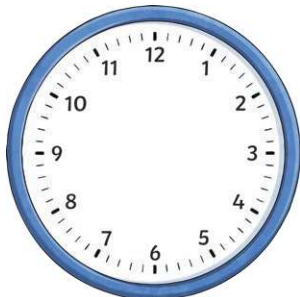
---



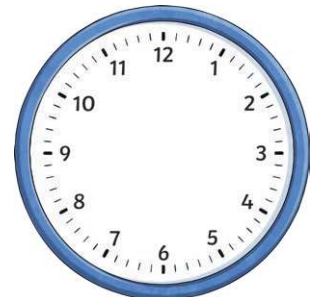
Draw the hands on the clock to show when the children had fish and chips.



Draw the hands on the clock to show when the children built a sandcastle.



The clock shows when the children went paddling in the sea. They came out of the sea after  $\frac{3}{4}$  of an hour. Draw the hands on the clock to show when they finished paddling.



The clock shows when the children began their journey home. It took 2 hours and 25 minutes. Draw the hands on the clock to show when they got home.