



Strathyre Primary School Travel Plan

May 2018/19



Contents

Section 1: Introduction.....	1
Section 2: About Our School	3
Section 3: Location and Description of Strathyre Primary School	5
Section 4: Local Transport Links and Transport Facilities	8
Section 5: School Travel Related Policies and Practice.....	10
Section 6: Travel Issues	12
Section 7: Changes in Circumstances since the Last STP.....	15
Section 8: Progress on Original STP.....	16
Section 9: Surveys and Consultation.....	18
Section 10: Survey Results and Analysis	19
Section 11: School Travel Plan Working Group	21
Section 12: STP Objectives and Targets.....	22
Section 13: Action Plan	23
Section 14: STP Monitoring and Sign-Off.....	25
Appendix A: Public Transport Timetables	26
Appendix B: Travel Survey.....	27

Section 1: Introduction

Background

Transport Scotland defines a School Travel Plan (STP) as “A process whereby a school works out how it intends to make travel to and from school by children, parents, teachers and visitors, safer and more sustainable. It should identify local issues relating to the school journey and outline a series of practical steps designed to promote more active and sustainable travel choices, such as walking and cycling.” (Transport Scotland, 2015)

Stirling Council is also supportive of School Travel Plans (STPs) as set out in Walking and Cycling to a Healthier Stirling, published by Stirling Council in December 2016

“Walking and cycling to school is important for a number of reasons, including:

- *Improving Children’s health.*
- *Reducing the number of cars being used to take children to school.*
- *Providing children with the essential road and traffic awareness skills.*

Stirling Council will therefore be supporting nurseries and schools in the area to ensure that everyone has a ‘live’ travel plan, in line with Council guidance ...” (Walking and Cycling to a Healthier Stirling, Stirling Council, 2016).

STPs are designed to address the problems that are an issue for an individual school.

A STP promotes sustainable and safer transport for the whole school community. A STP can result in:

- Less cars and congestion around the school site;
- Healthier, more active children, families and staff;
- Less pollution around the school;
- Safer walking and cycling routes around the school;
- Improved school grounds with provision for bicycle storage (where possible);
- A more accessible school site; and
- Improved attendance and achievement.

Our STP has been created to meet the needs of Strathyre Primary School and we have consulted members of our school community to identify our next steps.

The aims of the STP for Strathyre Primary School are to:

- To increase the safety of children entering and leaving the school by addressing the number of vehicles outside the school premises at the beginning and end of the day.
- To alert drivers to the presence of a school in Strathyre and to encourage speed reduction.
- To encourage children to cycle, scoot and walk to school regularly and safely.
- To encourage staff and parents to use the car park with care and attention to child safety.
- To encourage parents and staff to car share when possible to lessen the number of unnecessary car journeys.

The original STP for Strathyre Primary School was completed in 2015.

The STP will be reviewed annually by the STP working group and the lead name responsible for this is B. McDonald, Headteacher.

Measures implemented by the previous STP include:

- Traffic Initiative in partnership with Police Scotland ongoing throughout the year.
- Annual Bikeability for P6/7 children.
- During health week the children are encouraged to come to school on a bike, to walk or to park and walk. This is dependent upon parental arrangements.

The contact details for the STP lead are as follows:

Name: B.McDonald

School: Strathyre Primary School

Address: Keip Road
Strathyre
Callander
FK18 8NQ

Telephone Number: 01877 384223

E-mail: strathyps@stirling.gov.uk

Temporary address at McLaren High School (until August 2018):

Mollands Road

Callander

FK17 8JH

Telephone Number: 01786 237 940

Section 2: About Our School

School Contact Details

Address: Strathyre Primary School
Keip Road
Strathyre
Callander
FK18 8NQ

Telephone Number: 01877 384223

E-mail: strathyps@stirling.gov.uk

Website: <https://blogs.glowscotland.org.uk/st/strathyreprimaryschool/>

School Details

At present for 2017-18, the number of children on the school roll is 41. Presently, Strathyre has the capacity for 50 children, however when we move into our new building in August 2018, there will be capacity for 75 children.

The age range of the school children is 4 to 12 years.

The school operates as follows:

- Morning Session – 09:00 - 12:00.
- Lunchtime time – 12:00 - 13:00.
- Afternoon Session – 13:00 - 15:15.

The site is open from 08:00 – 18:00 and pupils have access from 09:00 – 15:15. This is the present situation for Strathyre at McLaren High School. These times may alter next session.

School Staff Information

Staff numbers at Strathyre Primary School total 7 in addition to a number of visitors who attend our school regularly to support learning and teaching. A break-down of our current staff includes:

- 2 full-time members of staff.
- 3 part-time members of staff.
- 1 visiting SfL teacher.
- 1 visiting specialist.
- 2 volunteers.

Out of School Clubs

Table 1 outlines the different use of the school building for purposes outside the school day.

Table 1. Use of Building for Out of School Clubs

NAME OF CLUB	CLUB ORGANISED BY	No. CHILDREN ATTENDING
Chess	B. McDonald	8
Table tennis	B. McDonald and E. Mochan	7

NAME OF CLUB	CLUB ORGANISED BY	No. CHILDREN ATTENDING
Art and Craft Club	B. McDonald and E. Mochan	14
Cartoon Club	Daniel Martin	8
Nature Club	Sally Smith	12
STEM Club	Daniel Martin	12
Sports Leader P.E. lunchtime sessions	B. McDonald and Ashley Montgomery	All children

Extended Community Use

Due to the present situation, this section will be completed next session.

School Admissions Policy

Our current admissions policy can be found via the following link – <http://my.stirling.gov.uk/services/education-and-learning/school/primary-school/>

Section 3: Location and Description of Strathyre Primary School

History of Strathyre Primary School

Strathyre Primary is a small, rural school set in beautiful environs. It was built in 1960 to replace a very old building, which was the original school. A standing stone, which is believed to be a lintel or corner stone, sits in the playground and is the only remaining evidence of the old school.

Strathyre School serves the three rural communities of Strathyre, Lochearnhead and Balquhider. Most children travel to and from school each day on school buses. Local children are able to walk, but some children live too far away to walk or cycle every day.

School Entrances/Exits – Overview

Figure 1 shows the main entrances and exits to the school. The map also shows the car park area and school field.

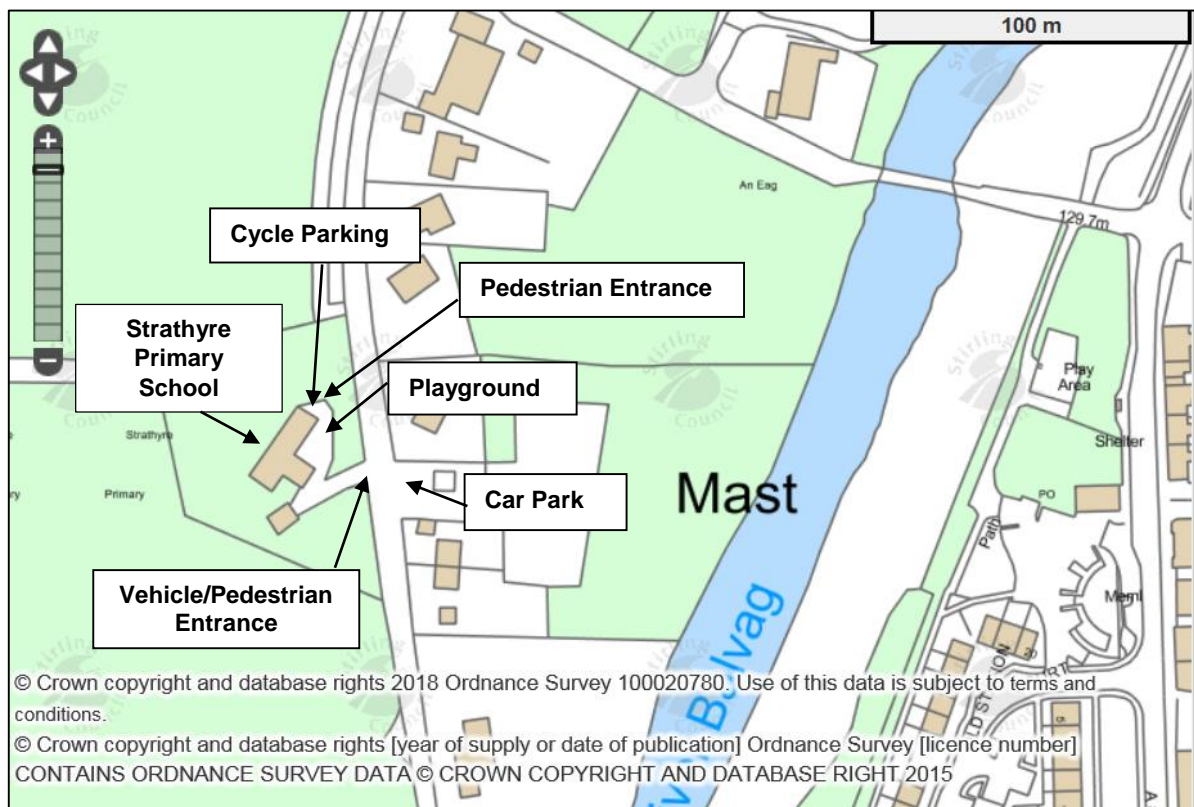


Figure 1. Strathyre Primary School Site Plan (Stirling Council, 2017)

The use of the different entrance/exits is further described below.

The school is located on a quiet B road which leads to private houses and farms. There is a small car park which is for use by staff, parents and school taxis. To access the school and by car, drivers must turn off the main street onto Keip Road. This is the route used by all delivery vehicles.

The primary school children are accommodated in a single building in the school grounds. To facilitate access for emergency vehicles, there is a double gate and traffic cones, these are used to deter parents from parking across the gates.

Pupils of the school, parents and carers dropping off and picking up, access the playground via a footpath and gateway at the northern end of the school grounds. The majority of car users park on the road at the front of the school. Some car users also park in the school car park.

Surrounding Roads and Infrastructure

As shown in 0, the school is located on Keip Road which is accessed from the A84 trunk road which passes through the village. The road is single track with a 20mph speed limit and located within the village of Strathyre. There is restricted access and parking on the street outside the school.

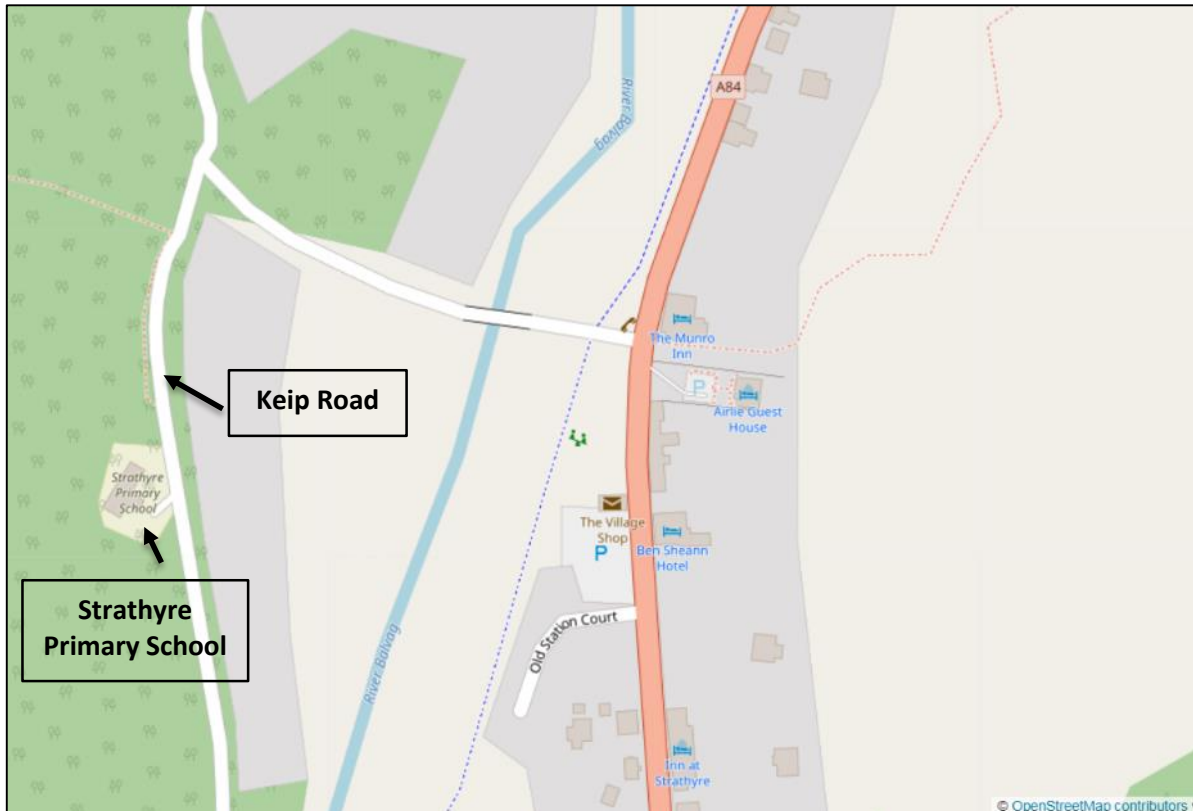


Figure 2. Map of Roads Surrounding Strathyre Primary School (OpenStreetMap, 2018)

Catchment Area

A map of Strathyre Primary School is shown in Figure 3. The majority of our pupils are from within the Strathyre village. The catchment area also extends to Lochearnhead and Balquidder to the north. There are two families from Brig 'O' Turk village (one was a placement request and the other child attends Strathyre because Brig 'O' Turk school has been mothballed).



Based upon Ordnance Survey mapping with the permission of the controller of Her Majesty's Stationary Office (HMSO) (c) Crown Copyright. Unauthorised reproduction infringes Crown copyright and may lead to prosecution or civil proceedings. Stirling Council 100020780(2004)

The catchment schools of exact properties can be checked by phoning the number listed.

Strathyre Primary School Catchment



Planning & Resources
Children's Services
Viewforth
Stirling FK8 2ET
01786 442605



Figure 3. Strathyre Primary School Catchment (Stirling Council, 2017)

Section 4: Local Transport Links and Transport Facilities

Local Transport Links

Public Bus Services

Table 2 shows the bus services which provide access to Strathyre Primary School. The information is correct as at May 2018. Links to individual service timetables are provided in Appendix A. The nearest bus stops are situated on the A84 for bus services 160 and S60 both approximately 500m from the school gate. The bus services do not correspond with the start and the end of the school day.

Table 2. Bus Services

ROUTE NUMBER	OPERATOR	ROUTE	FREQUENCY
160/S60	First	Stirling – Callander – Kingshouse – Killin – Tyndrum	Two daily services

Train Services

Strathyre Primary School is situated approximately 27 miles away from Stirling Rail Station. The station is served by trains from Edinburgh (half-hourly) and Glasgow as well as services to Perth and further north to Aberdeen and Inverness. More train timetable information can be found in Appendix A.



School Bus

Most children travel to and from school each day on two school buses.

Two pupils use a taxi service which is provided by Stirling Council. These pupils are transported from their home in Lochearnhead to/from the school.

Walking and Cycling Routes

The main walking and cycling routes which children use are highlighted and numbered in Figure 4. These include:

MAIN WALKING/CYCLING ROUTE DESCRIPTION	ROUTE
A84 onto B road and then onto a raised footpath	
The cycle path runs behind Old Station Court and crosses the river, joining the B road to the school building.	

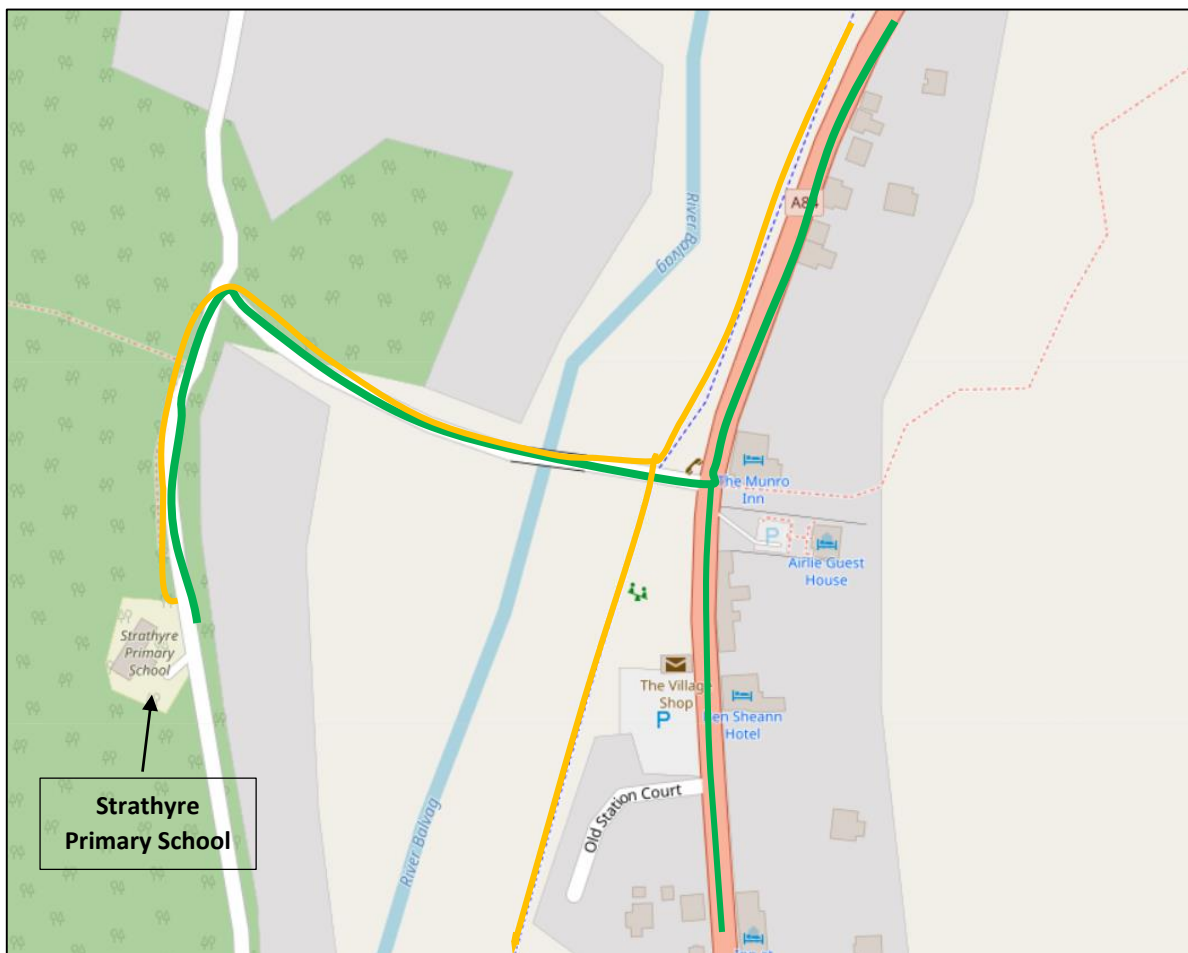


Figure 4. Walking and Cycling Routes to Strathyre Primary School (Open Street Map, 2018)

School Crossing Patrol

There is no School Crossing Patrol operating in Strathyre at this time.

Cycle/Scooter Facilities

There is an uncovered bicycle rack to the side of the school with the capacity for 8 bikes/scooters. This does not meet demand at the moment, however as the school will now have a larger capacity for 75 children there is a need for more cycle/bicycle racks. The children bring their own locks to school. Pupils and staff must provide their own security for the bicycles.

Pupils have access to cloakrooms where possessions can be stored. There are no lockers or shower facilities available for staff or children.

Car Parking Spaces

There are currently 7 car parking spaces which are for staff and visitors use only. The allocation for a space is on a first come, first served basis. The number of car parking spaces is inadequate, however there are plans to extend the car park which will be clarified by the next academic year.

Section 5: School Travel Related Policies and Practice

This section outlines school travel policies and practice at Strathyre Primary School.

We have embarked on **Bikeability** lessons for Primary 6 and 7 pupils to learn how to cycle safely. We also hold a sponsored walk each year in September or October.

Bikeability



Sponsored Walk



We have a Bus Behaviour Policy, which was updated in 2017-18 to reflect the current situation. It was designed in collaboration with the children, staff and parents. All children have taken a copy home to share with their parents.

Traffic Calming Initiative 2005 - 2018

We have also been working hard with our local Police Constable, PC Diamond and our communities to make our roads slower and safer to use. Below is a brief summary of the work that we have done to date to make our village a safe and healthy place to live.

In August 2007, the P4 – 7 children of Strathyre Primary School embarked on a traffic / safe routes to school campaign as part of their Health programme. They were investigating dangers in the local environment and suggesting strategies for keeping themselves safe. The children decided collectively to tackle the very real danger of traffic passing through their village at speed.

- In order to gather the views of families and local villagers, the children devised a questionnaire which was distributed to all stakeholders.
- Working in partnership with Central Scotland Police, the children carried out various traffic surveys, monitoring the speed, volume and type of traffic passing through the village and times of high usage over a period of time.
- MSP Bruce Crawford visited the school. He watched the children's PowerPoint Presentations detailing the traffic problems in Strathyre.
- Stirling Council's School Travel Co-ordinator listened to their views.
- The children asked many questions and invited parents to join in the debate.
- Our children travelled to the Scottish Parliament to raise awareness about our traffic initiative.

The Traffic Calming Initiative is still a major focus for our school. During our annual Health Week in May, PC Diamond from the Forth Valley Division of Police Scotland, takes the children out to the Forestry Car Park to carry out the initiative.

We were informed that Forth Valley Police have adopted this approach to traffic calming throughout the region and other regions.



A Primary 5 pupil works with PC Diamond to slow down the traffic passing through the village.

A driver is asked to answer questions from the traffic quiz by three junior pupils.



Strathyre Pupils working together with PC Diamond to stop speeding in our village.

Section 6: Travel Issues

This section outlines key travel issues in relation to the school. Traffic and travel concerns were discussed with the pupils during our committee meetings and it was decided that we should have a stand for our 'Travel Plan' at our annual parent's evening in April 2018, where parent's views could be garnered. Our pupils have also undertaken speed surveys with our local community Police Officer throughout the school year.

Here are the key issues identified through these activities, categorised as follows:

Speeding Vehicles

- Cars travelling too fast - SPEED is still a big issue in both Strathyre and Lochearnhead villages and makes many of the children feel unsafe.

Volume of Vehicles

- During holiday periods, it can take up to 5 minutes to cross the road in Strathyre.
- Bigger school means more of a need for crossing as more families living in the village.

Composition of vehicles

- Different types of vehicles use the A84 which is the main artery north to Oban and beyond. These include coaches, lorries, forestry vehicles, recycling vehicles, vans and cars with visitors accessing tourist attractions and accommodation.

Parking

- The school lies on a single track B road. Parents parking cars on the grass verge / road, outside school is a major hazard as children are crossing in front of vehicles when being picked up by parents

Other

- Car parking facilities need to be extended for parents to drop-off and pick-up their children.
- Availability of cycling storage in the village and at school.
- Suggested measures raised through the consultation include:
 - Parents and children want a pedestrian crossing to enable children to walk to school safely.
 - Traffic calming measures between the cycle track and school.
 - Traffic calming measures or directional priority.
 - Average speed cameras, one at either end of both Lochearnhead and Strathyre villages.
 - Signage around the school. Zig zag road marking outside the school.
 - Smiley faced signs into and out of the village.

Below are copies of our parental consultation undertaken as part of the parents' evening in April 2018. We asked parents and children if they thought that a pedestrian crossing in Strathyre would contribute positively to road safety. Many of our families have mentioned that crossing the road during peak times and holidays can be almost impossible due to the volume of traffic passing through the village.

We would like our children to be able to walk, cycle and cycle safely to their school and a pedestrian crossing would enable them to do this.

Strathyre School Travel Plan 2018-19

Strathyre School Traffic Initiative

Since 2005, the staff, pupils and whole school community have been working together to ensure that Strathyre is a safe place to live and work.

Our aims are:

- To make our village a safer place in which to live, work and play
- To remind people to slow down as they travel through our village
- To remind drivers that there is a school in the village
- To assist our campaign for a pedestrian crossing
- To remind drivers to slow down as they pass through all villages and to obey the speed limit at all times
- To make drivers more aware of stopping distances
- To encourage drivers to think about the weather conditions and vary their speed accordingly

We would now like to investigate the possibility of having a **pedestrian crossing** in the village.

Could you please write your name below if you would like to see a pedestrian crossing in the village?

Jamie Anderson.

Danielle Bird

Lesley Whearty

Iona Mchedliani

L2 Mulhearn.

Kasia Sujanova

Lis Stoddart

Erica Mackenzie

Tanya MacLennan



Gail Rennie

Candice Cindeck

Sarah Gibson

Grant Gibson

Suzie Todd.


Julia + barley

Helen Clark.

Uli B&B

Kelly Chapman-Bates

Please jot down any traffic, road concerns or helpful suggestions for work to be done to include in our new school Travel Plan.

Traffic calming measures? eg. directional priority  or narrower road sections.

Pedestrian Crossing
opposite Nura Hotel?
(Bigger School means a need for
Pedestrian)? ← YES!
↑
will help as traffic calming measure!

- Cars drive fast outside school

- Police NEED TO DO MORE TO STOP SPEEDING!!!!

- Traffic calming measures between the cycle track to school. So cycling to school is more of an option as they get older on their own.

Average speed cameras would be useful too, one at each end of the village measuring average speed through village. there is a great example of this on a main road in England. (A66 Kirkby Thore)

- zig zag outside primary school.

- Slightly faced signs into & out of the village.

Section 7: Changes in Circumstances since the Last STP

The school has decanted to McLaren High School and is presently housed within the library. This situation is due to change in August 2018, when we move back into the refurbished and extended school building.

There will be capacity for 75 children and an extended car park for staff and visitors.

Section 8: Progress on Original STP

Table 3 below provides details of progress in achieving the actions and targets of the previous STP Action Plan published in 2015/16.

Using all the information from the questionnaires from pupils, parents and the wider community of the school, the children devised an action plan.

Table 3. STP Travel Action Plan Progress

What are we going to do?	How are we going to do it?	Timescale	Progress Update
Encourage pupils to walk every day.	Introduce the ' Kids Kilometre ' where children walk or run for 15 minutes every day and keep a score of the distance travelled.	Introduce in August 2015 and pilot throughout the year.	Children do the SKC unless the weather is very inclement and have done since it was introduced.
Whole school walking bus from the village shop once every half term.	Timetable a walking bus where all children meet in the village car park and walk to school with staff and parents.	Introduce in August 2015 and pilot throughout the year.	This did not work so well as the children who were bused in got there at different times. Available adults were not always able to accompany the children.
Encourage pupils to cycle, scoot or walk when possible.	Designate weeks throughout the year where children and parents are encouraged to cycle/scoot/walk for part or all their journey to school.	This will only be possible during the clement months of the year.	Health Week is a focus for all healthy activities. Pupils are encouraged to travel to school using a bike or walking. The children who travel by bus are encouraged to come half way on a bike / walk.
Improve cycling proficiency.	Continue to provide Bikeability lessons, levels 1 and 2 for P6 and 7 children.	Ongoing	Each year our P6/7 pupils take part in a Bikeability Course of approx. 5 afternoons, concluding with a bike ride. Ongoing.
Promote walking as a healthy activity at any time during the week.	During clement weather, go for a walk after lunch for 20 minutes on the new cycle path.	Introduce in August 2015 and pilot throughout the year.	The SKC has replaced this initiative.
Organise a sponsored walk each year with all families and friends to raise funds for the school.	Choose a route that will enable all children, young and old, to walk easily and socialise with different age groups.	September annually	Each year the school holds a sponsored walk including parents, families, local PC and local community. Pets allowed as well.

What are we going to do?	How are we going to do it?	Timescale	Progress Update
Big Brakes Walk.	Take part in the Big Brakes Walk annually with parents and friends of the school.	Annually	Sponsored Walk replaced this event.
Decrease the number of cars parking outside school at the beginning and end of the school day.	Over a monthly trial period, encourage parents to park in the village and walk to school using the footpath over the bridge.	What impact, both negative and positive, has this change had on the health of the pupils and parents?	In partnership with the local Police, cones were placed outside the school gate to encourage parents to park in the car park or further away from the school entrance.
Use of car park	Encourage all staff to car share when possible.	Introduce in August 2015 and pilot throughout the year.	Staff live over a wide area and leave at different times. Only occasionally are they able to car share.
Ensure that children can cross the road safely in Strathyre.	Continue to further our successful Traffic Initiative, with a focus on having a pedestrian crossing installed in Strathyre village.	Ongoing initiative in partnership with Police Scotland	Children still participate in the Traffic initiative but we have not made any progress with the pedestrian crossing. We were informed that it would be too dangerous as the A84 is a major trunk road.

We have also continued with progressing our Traffic Calming Initiative described in Section 5. Since the previous STP in 2015, this has involved:

- Once a term, or three times a year, the P4 to P7 children and a member of the Police Force will use a speed gun to assess the speed of traffic entering Strathyre. All drivers travelling over 40 mph will be booked for exceeding the speed limit.
- Drivers travelling between 30 and 40 mph will be asked to drive into the Forestry Car Park where they will complete a questionnaire with PC Diamond and our children. A copy of the questionnaire is included in Appendix B.
- As a result of these activities the speed of traffic travelling through Strathyre is monitored and drivers are aware that there may be a speed gun deployed at any time. However, we do not have quantitative data regarding the volume and speed of traffic passing through the village.

Section 9: Surveys and Consultation

This section outlines consultation activities undertaken and the results. This includes consideration of pupil and staff modes of travel to school. Table 4 outlines the consultation activities undertaken.

Table 4. Survey/Consultation Summary

WHO WAS CONSULTED?	WHAT WERE THEY CONSULTED ABOUT?	WHEN	HOW DID THE CONSULTATION HAPPEN?
Children	Travel to school	Every September	Hands Up Scotland Survey
Staff	Travel to school	Annually in August	Discussion during In-Set days to assess whether car sharing is an option. *Unfortunately, all staff live quite far apart and leave at different times of the day.
Parents	Views on travel related issues	April 2018	School survey included above
Drivers passing through the village who are stopped due to speeding.	Use of questionnaire. Please see appendix B	At different times throughout the year.	Surveys completed with Police, children and driver

Copies of the surveys that have been used can be found in Appendix B.

Section 10: Survey Results and Analysis

School Travel – Pupils

A whole school Hands Up Scotland Survey (HUSS) was conducted in September 2017. The children were asked about how they came to school on the particular day of the survey. The results shown in Figure 5 **Error! Reference source not found.** illustrate that the majority of pupils (36 pupils - 95%) were driven to school. A further 5% of pupils said that they travelled by bus. The pupil travel data for 2017 is reflective of the temporary relocation of pupils to McLaren High School. Data for previous years is further discussed below.

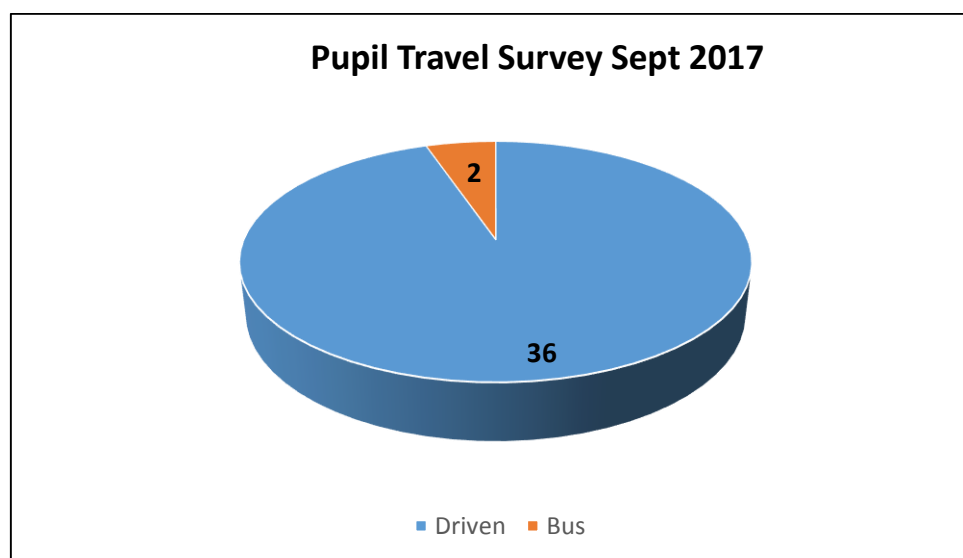


Figure 5. Pupil Mode of Travel (Sustrans, 2017)

School Pupil Travel Distance

Approximately a third of school children live in the village of Strathyre as illustrated in Table 5 by the fact that 35% of children live under one mile from the school. The other pupils live over two miles from the school.

Table 5. Pupil Distance from School

DISTANCE	% CHILDREN
Live less than one mile from Strathyre Primary School	35%
Most other children live between three and six miles from Strathyre Primary School	61%
Two children live in Brig 'O' Turk which is approx. 13.5 miles from Strathyre	4%

Historic Pupil Travel Data

Table 6 shows historic pupil travel data from the Hands Up Scotland Survey (HUSS). This shows that for the period 2008 to 2016, the majority of children travelled to school by bus. There has been a notable decrease in the numbers of children that have been travelling to school by car from nearly 29% in 2008 to 13% in 2016 with a parallel increase in school bus travel. The number of pupils walking has averaged around approximately 20%, peaking at over 23% in 2008 and 2009. Cycling is less prevalent, although in 2016 over 10% of pupils stated they cycled to school, but no pupils in the years prior.

Table 6. Historical School Pupil HUSS Data 2008 – 2016 (Sustrans, 2017)

Mode of Travel (% Children)									
Year	Walk	Cycle	Scooter / Skate	Park & Stride	Driven	Bus	Taxi	Other	Total
2008	23.7%	0.0%	0.0%	*	28.9%	36.8%	*	0.0%	38
2009	23.7%	0.0%	0.0%	*	28.9%	36.8%	*	0.0%	38
2010	18.6%	*	0.0%	14.0%	11.6%	53.5%	0.0%	*	43
2014	20.0%	0.0%	0.0%	*	20.0%	56.7%	0.0%	*	30
2015	*	*	0.0%	0.0%	23.1%	64.1%	0.0%	0.0%	39
2016	19.6%	10.9%	0.0%	0.0%	13.0%	56.5%	0.0%	0.0%	46

Mode of Travel Staff

All teaching staff travel to school in their own cars. Most live at least 23 miles from the school, one lives in Larbert which is 33.3 miles from Strathyre. Two members of staff live in Dunblane, but do not have the same working hours and therefore are rarely able to car share.

One member of the support staff travels to and from school on the school bus. The other walks to school as she lives on Keip Road.

Section 11: School Travel Plan Working Group

The STP Working Group comprises representation from:

- Strathyre Primary School staff.
- Parent representatives.
- Pupil representatives.
- Representatives of the local community.

The working group meets at regular intervals as summarised in Table 7.

Table 7. STP Working Group Meeting

DATE OF MEETING	ATTENDEES	PURPOSE OF MEETING
Termly throughout the year. (4 times) Term 1	Head Teacher Rhoda Keenan (local community rep) Sally Smith (Class teacher) JRSOs – pupils from the eco group Parent rep (TBA)	Initial meeting to outline changes on format of STP and expectations. Agreeing responsibility for actions required to complete general format.
Term 2	Head Teacher Rhoda Keenan (local community rep) Sally Smith (Class teacher) JRSOs	To outline the aim of the STP to children. Invite local PC to meeting. Discuss any developments / progress made to date.
Term 3	Head Teacher Rhoda Keenan (local community rep) Sally Smith (Class teacher) JRSOs	To discuss progress on completing the STP and objectives. Invite local PC to meeting.
Term 4	Head Teacher Rhoda Keenan (local community rep) Sally Smith (Class teacher) JRSOs	Update situation regarding traffic/travel to school. To add any further information required to the STP.

Section 12: STP Objectives and Targets

The objectives and targets of the STP are as follows.

OBJECTIVE	TARGET
Encourage more children to walk to/from school.	Reduce the number of children travelling the whole journey by car.
Encourage more children to scoot or cycle to/from school.	Enable children to cycle to school safely.
Improve knowledge of road safety among children and parents.	Children and parents will be more informed of the importance of road safety through assemblies, school website, twitter, parent-mail, newsletters and the school app. Ongoing focus each year.
Address parking issues for staff, parents and visitors to allow them to access the school more easily and safely.	Improved parking provision for staff, parents and visitors to the school and safer surrounding environment with more children walking/cycling where possible.

Section 13: Action Plan

The action plan to deliver the objectives and targets of this STP is outlined below:

Objective: Encourage more children to walk to/from school.

Target: Reduce the number of children travelling the whole journey by car.

Baseline: The 2017 HUSS survey indicated that 95% of children are driven to school.

ACTION <i>(What will we do?)</i>	RESPONSIBLE <i>(Who will manage the action?)</i>	TIMESCALE <i>(Action completed by?)</i>	SUCCESS CRITERIA <i>(What do we want to achieve for each action?)</i>
To identify two areas for parking to support park and stride or ride and communicate this to parents.	Sally Smith	December 2018	Two parking areas identified and communicated to parents.
To undertake a parent/carer survey in Sept 2018 to understand more about travel choices and issues.	Sally Smith	September 2018	Survey undertaken and increased awareness of how children travel to school and any issues highlighted.
Set up a school walking bus one day a term from the village shop with school staff and parents.	Bernie McDonald	Annually	Walking bus operational a day a term.

Objective: Encourage more children to cycle or scoot to/from school.

Target: To enable children to cycle to school safely and fundraise for bicycle racks in the playground.

Baseline: Approximately 5% of pupils cycle to school (2017).

ACTION <i>(What will we do?)</i>	RESPONSIBLE <i>(Who will manage the action?)</i>	TIMESCALE <i>(Action completed by?)</i>	SUCCESS CRITERIA <i>(What do we want to achieve for each action?)</i>
Bikeability lessons for P6/7 children annually.	Bernie McDonald	Annually	P6/7 pupils to experience road safety through Bikeability lessons.
Enterprise Committee to plan fundraising activities for purchase of bike racks to provide cycle storage in the village and at the school - more storage for cycles will encourage both residents and visitors to cycle rather than drive. Some parents may drive to the village and then cycle with their children for the final part of their journeys.	Liz Mochan/ Daniel Martin	2018-19	Bicycle Racks installed and used by children. More children to scoot or cycle to school.
Explore opportunities with Stirling Council for traffic calming measures between the cycle track and school	Bernie McDonald	2018-19 school year	Discussions take place with Stirling Council.

Objective: Improve knowledge of road safety among children and parents.

Target: Children and parents will be more informed of the importance of road safety and reduction in the number of children travelling the whole journey by car.

Baseline: The 2017 HUSS survey indicated that 95% of children are driven to school.

ACTION <i>(What will we do?)</i>	RESPONSIBLE <i>(Who will manage the action?)</i>	TIMESCALE <i>(Action completed by?)</i>	SUCCESS CRITERIA <i>(What do we want to achieve for each action?)</i>
PC Diamond to take Road Safety sessions with P1-7.	Sally Smith	Annually	Children aware of road safety procedures.
Raise awareness to safety issues with parents through use of social media.	All staff	September 2018	School App to be used as a means of communication with parents. All parents signed up.
Bikeability lessons for P6/7 children annually.	Bernie McDonald	Annually	P6/7 pupils to experience road safety through Bikeability lessons.

Objective: Address parking issues for staff, parents and visitors to allow them to access the school more easily and safely.

Target: Improved parking provision for staff, parents and visitors to the school and safer surrounding environment with more children walking/cycling where possible.

Baseline: The 2017 HUSS survey indicated that 95% of children are driven to school.

ACTION <i>(What will we do?)</i>	RESPONSIBLE <i>(Who will manage the action?)</i>	TIMESCALE <i>(Action completed by?)</i>	SUCCESS CRITERIA <i>(What do we want to achieve for each action?)</i>
Explore opportunities with Stirling Council to extend parking facilities for staff and visitors.	Bernie McDonald	2018-19 school year	Discussions take place with Stirling Council.
Encourage parents to park and walk to school or to park away from the entrance.	Bernie McDonald	2018-19 school year	Increase in park and stride. Improved access/less congestion at the school date.
Explore opportunities with Stirling Council for signage around the school and Zig zag road marking outside the school.	Bernie McDonald	2018-19 school year	Discussions take place with Stirling Council.

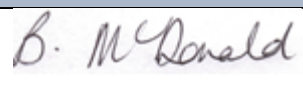
Section 14: STP Monitoring and Sign-Off

In the future, we will review our plan annually to agree if we have met our targets or if we need to set new ones. This will be completed on an annual basis at the start of each school session.

Key review dates include:

- The next **Hands up Scotland Survey (HUSS)** will take place in **September 2018**.
- The next **School pupil/staff mode travel survey** will take place in **September 2020**.
- **Annual STP Review** date – **September 2020**.
- **Full STP Review** date – **September 2020**.

Strathyre Primary School is committed to review and revise the STP with changes which effect travel to our school and the STP is signed on behalf of our school by:

STP LEAD	DESIGNATION	SIGNATURE	DATE
Bernadette McDonald	Headteacher		3.5.18

Our STP can be viewed on our school website at – Strathyre Blogs
<https://blogs.glowscotland.org.uk/st/strathyreprimaryschool/>

Appendix A: Public Transport Timetables

Bus Services

Timetable information for Service S60/160: Stirling – Callander – Kingshouse – Killin – Tyndrum can be found at the following link:

<https://www.firstgroup.com/uploads/maps/S60%20160%20timetable.pdf>

Train Services

Timetable information for services serving Stirling rail station can be found at the following link: <https://www.scotrail.co.uk/plan-your-journey/stations-and-facilities/stg>

Appendix B: Travel Survey

Traffic Questionnaire	
Please tick the answer that you think is most correct	
Male:	Female:
<p>Q1.</p> <p>How far away from Strathyre do you live?</p>	<p>a) 1 - 5 mile radius</p> <p>b) 6 - 10 mile radius</p> <p>c) 11 - 15 mile radius</p> <p>d) 16 - 20 mile radius</p> <p>e) Other please state _____</p>
<p>Q2.</p> <p>What is the purpose of your journey?</p>	<p>a) Work</p> <p>b) Leisure</p> <p>c) Commuting</p> <p>d) Other _____</p>
<p>Q3.</p> <p>How long have you been driving?</p>	<p>a) 0 - 5 years</p> <p>b) 6 - 15 years</p> <p>c) 16 - 25 years</p> <p>d) Over 25 years</p>
<p>Q4.</p> <p>What speed do you think that you were travelling?</p>	<p>a) Below 30 mph</p> <p>b) 30 mph</p> <p>c) 35 mph</p> <p>d) Over 35 mph</p>
<p>Q5.</p> <p>Did you see the speed limit sign at the entrance to Strathyre? Do you think that it is visible enough?</p>	<p>a) Yes</p> <p>b) No</p> <p>c) Not sure</p>
<p>Q6.</p> <p>Do you know what the speed limit is in Strathyre?</p>	<p>a) 30 mph</p> <p>b) 40 mph</p> <p>c) Not sure</p>

<p>Q7.</p> <p>Did you know that there is a primary school in the village?</p>	<p>a) Yes</p> <p>b) No</p> <p>c) Not sure</p>
<p>Q8.</p> <p>Do you have any school age children?</p>	<p>a) No</p> <p>b) If yes, please state number: _____</p>
<p>Q9.</p> <p>Do you think this traffic initiative will slow drivers down?</p>	<p>a) Yes</p> <p>b) No</p> <p>c) Don't know</p>
<p style="text-align: center;">Thank you for taking part in our traffic survey</p> <p style="text-align: center;">Strathyre Primary School</p>	