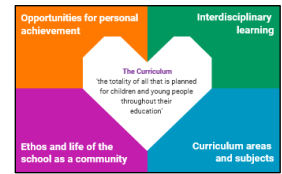




Curriculum for Excellence

Fintry Primary 3/4 Long Term Overview 2024/25/26

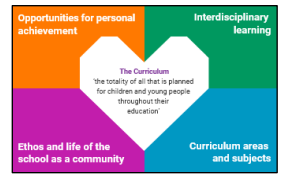


		Autumn <i>August to October 9 weeks</i>	Autumn 2 <i>October to November 4 weeks</i>	Winter 2 <i>November to December 6 weeks</i>	Winter 3 <i>January to February 5 weeks</i>	Spring 1 <i>February to March 7 weeks</i>	Spring 2 <i>April to May 5 weeks</i>	Summer 1 <i>May to June 5 weeks</i>
Interdisciplinary Learning	Year 1 <i>(2024/25)</i>	<u>Survival Sustainability</u> Polar Bears				<u>Global Citizenship</u> Sharing information about people in the past		By exploring climate zones around the world, I can compare and describe how climate affects living things. SOC 1-12b
	Year 2 <i>(2025/26)</i>	<u>Invasion Good or Bad?</u> Romans Invasion of Scotland				<u>Innovation Engineering</u>		By exploring a natural environment different from my own, I can discover how the physical features influence the variety of living things. SOC 1-13b
Across the Curriculum Areas and Subjects								
Social Studies People in Past, Events and Societies	Year 1				<u>Exploring Evidence</u> Viking Scotland			
	Year 2				1980s			
Social Studies People in Place and Environment	Year 1						Measure the Weather!	
	Year 2						<u>Locate places and features</u> Scotland's Landscape and places/ Use an Atlas	
Social Studies People in Society, Economy and Business	Year 1		<u>Enterprise Money & Finance</u> Enterprise Activity including Simple Budgets					
	Year 2		<u>Enterprise Money & Finance</u> Enterprise Activity including Simple Budgets					
Technology	Links to Project Work	Food and Textiles	Technological Developments in Society and Business	Digital Literacy	Animation Skills	Craft, engineering, design, and graphics	Outdoor Learning	Computing Science
Expressive Arts	Drama	Harvest		Christmas Show	Poetry Competition		Lead Assembly	
	Dance		Strictly Fintry Dance Genres	Social Dancing	Heroes & Performance			
	Art	Line drawings & Pattern		Decoration and Craft		The Artist & Painting		The Potter and Sculpture
	Music	Singing Stars	The Orchestra	Christmas show	Scottish Music	Percussion	The Musician	End of Term
Science Tig Tag	Year 1	<u>Teeth The Skeleton</u> Joints and Muscles	<u>The Brain and Body Reducing the spread of Disease</u>	<u>Vertebrates/ Invertebrates Micro Organisms</u>	<u>Living Things Classifying</u>	<u>Food Chains</u> Food webs Obtaining Food	<u>Respiratory System Circulatory System Diet and Exercise</u>	<u>Fintry Flora and Fauna Reproduction</u>
	Year 2	<u>What is light? Reflection Shadows</u>	<u>Light Sources The sun as a light source White Light</u>	<u>How does sound travel? How do we hear? Volume</u>	<u>Properties of Materials Natural and Artificial Materials</u>	<u>Minerals Rocks</u>	<u>Earth Layers Soil</u>	<u>Fintry Flora and Fauna Food Chains</u> Food webs Obtaining Food Role of the environment
HWB	Mental & Emotional	Emotion Works Introduce Cogs/Refresher Mindfulness Positive Behaviour Healthy Schools	Emotion Works Happiness Mindfulness Positive Behaviour Healthy Schools	Emotion Works Sadness Mindfulness Positive Behaviour Healthy Schools	Emotion Works Fear Mindfulness Positive Behaviour Healthy Schools	Emotion Works Anger Mindfulness Positive Behaviour Healthy Schools	Emotion Works Calm Mindfulness Positive Behaviour Healthy Schools	Emotion Works Feedback Mindfulness Positive Behaviour Healthy Schools
	Social	School Values Nurturing School Restorative Practice	School Values Nurturing School Restorative Practice	School Values Nurturing School Restorative Practice	School Values Nurturing School Restorative Practice	School Values Nurturing School Restorative Practice	School Values Nurturing School Restorative Practice	School Values Nurturing School Restorative Practice
		RSHP Friends and friendship	RSHP My family/All our families are different Similarity, diversity and respect	Healthy Schools Substance Misuse	RSHP People who help and look after me Feelings and safety	RSHP Safe and happy online	RSHP Looking after plants and animals World of Work Planning for choices and changes	RSHP My body/Privacy Keeping Clean How human life begins, pregnancy and birth



Curriculum for Excellence

Fintry Primary 3/4 Long Term Overview 2024/25/26



CFE Continued	Autumn <i>August to October 9 weeks</i>	Autumn 2 <i>October to November 4 weeks</i>	Winter 2 <i>November to December 6 weeks</i>	Winter 3 <i>January to February 5 weeks</i>	Spring 1 <i>February to March 7 weeks</i>	Spring 2 <i>April to May 5 weeks</i>	Summer 1 <i>May to June 5 weeks</i>	
HWB	Food & Health	Healthy Schools: Cross Curricular: Cooking Skills; Safe and Hygienic practices; Nutrition; Food and the Consumer						
	Fitness	Daily Mile Active Stirling	Daily Mile Active Stirling	Daily Mile Active Stirling	Daily Mile Active Stirling	Daily Mile Active Stirling	Daily Mile Active Stirling	Daily Mile Active Stirling
	PE	Fundamental Physical Literacy Skills	Fitness	Dance	Gymnastics	Fundamental Physical Literacy Skills	Athletics	Outdoor / Summer Games
Languages	French BSL	French BSL	French BSL	French BSL Scots	French BSL	French BSL	French BSL	
Religious and Moral Education	Christianity Values and Issues	Christianity Practices and Traditions Harvest	Christianity Beliefs Christmas	World Religions Beliefs	Christianity Practices and Traditions Easter	World Religions Values and Issues	World Religions Practices and Traditions	
				1. Shinto (2024/25)	1. Shinto (2024/25)			
				2. Humanist	2. Humanist			
Ethos and Life of school	Our Relationships School Values School Charter Fintry Forum	Black History Month Anti-Bullying Week Children in Need	Fintry Forum Learner's Voice Local Charity	School Values School Charter Fintry Forum Mental Health Awareness Week	Book Week Science Week Comic Relief Speak Out Stay Safe	Global Goals National Numeracy Week	Health Week World Ocean's Week Fintry Forum	
Personal Achievements	Agreed between Teacher and Learner Targets Set	Agreed between Teacher and Learner Targets Set	Agreed between Teacher and Learner Targets Set	Agreed between Teacher and Learner Targets Set	Agreed between Teacher and Learner Targets Set	Agreed between Teacher and Learner Targets Set	Agreed between Teacher and Learner Targets Set	



Self-management

Focusing	Integrity
Adapting	Initiative

Social intelligence

Communicating	Feeling
Collaborating	Leading

Innovation

Curiosity	Creativity
Sense-making	Critical thinking