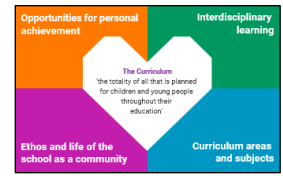




Curriculum for Excellence

Fintry Primary 1/2 Long Term Overview 2024/25/26

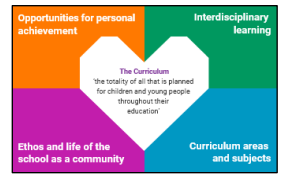


		Autumn <i>August to October 9 weeks</i>	Autumn 2 <i>October to November 4 weeks</i>	Winter 2 <i>November to December 6 weeks</i>	Winter 3 <i>January to February 5 weeks</i>	Spring 1 <i>February to March 7 weeks</i>	Spring 2 <i>April to May 5 weeks</i>	Summer 1 <i>May to June 5 weeks</i>	
Interdisciplinary Learning	Year 1 <i>(2024/25)</i>	<u>Invasion</u> <u>Good or Bad?</u> Pirates				<u>Sustainability</u> Farm to Fork	My Community	I can consider ways of looking after my school or community and can encourage others to care for their environment. <i>SOC 1-08a</i>	
	Year 2 <i>(2025/26)</i>	<u>Pollution</u> <u>Sustainability</u> Under the sea				<u>Global</u> <u>Citizenship</u> People in Society	My World	I have developed an understanding of the importance of local organisations in providing for the needs of my local community. <i>SOC 1-20a</i>	
Across the Curriculum Areas and Subjects									
Social Studies People in Past, Events and Societies	Year 1				<u>Exploring Evidence</u> Fintry Primary School				
	Year 2				<u>Exploring Evidence</u> Castles in Scotland				
Social Studies People in Place and Environment	Year 1						<u>Locate places and features</u> Map it out! Henry's Map Our Community		
	Year 2						<u>Locate places and features</u> Journeys around the world.		
Social Studies People in Society, Economy and Business	Year 1		<u>Enterprise Money & Finance</u> Enterprise Activity including Simple Budgets						
	Year 2		<u>Enterprise Money & Finance</u> Enterprise Activity including Simple Budgets						
Technology	Links to Project Work	Food and Textiles	Technological Developments in Society and Business	Digital Literacy	Animation Skills	Craft, engineering, design, and graphics	Outdoor Learning	Computing Science	
Expressive Arts	Drama	Harvest		Christmas Show	Poetry Competition		Lead Assembly		
	Dance		Strictly Fintry Dance Genres	Social Dancing	Heroes & Performance				
	Art	Line drawings & Pattern		Decoration and Craft		The Artist & Painting		The Potter and Sculpture	
	Music	Singing Stars	The Orchestra	Christmas show	Scottish Music	Percussion	The Musician	End of Term	
Science Tig Tag	Year 1	<u>Sun & Earth</u> Seasons	<u>The Moon</u>	<u>The sun as a light source</u>	<u>What is energy?</u> <u>What is light?</u> <u>What is sound?</u>	Heat and Temperature The sun as our main source of light	Plant Growth Plant Environments	<u>Fintry Flora and Fauna</u>	
	Year 2	<u>What is a force?</u> Friction Reducing Friction	<u>Magnetism</u> Using magnets	<u>Electricity</u> <u>Series and Parallel</u> <u>Circuits</u> <u>Electrical Circuits</u>	Conductors and the dangers of electricity	<u>Properties of Materials</u> <u>Natural and Artificial Materials</u> <u>Choosing appropriate materials</u>	<u>Characteristics of Water</u> <u>Changes of state</u> <u>Liquids</u>	<u>Fintry Flora and Fauna</u>	
HWB	Mental & Emotional	Emotion Works Introduce Cogs/Refresher Mindfulness Positive Behaviour Healthy Schools	Emotion Works Happiness Mindfulness Positive Behaviour Healthy Schools	Emotion Works Sadness Mindfulness Positive Behaviour Healthy Schools	Emotion Works Fear Mindfulness Positive Behaviour Healthy Schools	Emotion Works Anger Mindfulness Positive Behaviour Healthy Schools	Emotion Works Calm Mindfulness Positive Behaviour Healthy Schools	Emotion Works Feedback Mindfulness Positive Behaviour Healthy Schools	
	Social	School Values Nurturing School Restorative Practice	School Values Nurturing School Restorative Practice	School Values Nurturing School Restorative Practice	School Values Nurturing School Restorative Practice	School Values Nurturing School Restorative Practice	School Values Nurturing School Restorative Practice	School Values Nurturing School Restorative Practice	School Values Nurturing School Restorative Practice
		RSHP Friends and friendship	RSHP My family/All our families are different Similarity, diversity and respect	RSHP Substance Misuse	RSHP People who help and look after me Feelings and safety	RSHP Safe and happy online	RSHP Looking after plants and animals <u>World of Work</u> Planning for choices and changes	RSHP My body/Privacy Keeping Clean How human life begins, pregnancy and birth	



Curriculum for Excellence

Fintry Primary 1/2 Long Term Overview 2024/25/26



--	--	--	--	--	--	--	--	--

CFE Continued		Autumn <i>August to October 9 weeks</i>	Autumn 2 <i>October to November 4 weeks</i>	Winter 2 <i>November to December 6 weeks</i>	Winter 3 <i>January to February 5 weeks</i>	Spring 1 <i>February to March 7 weeks</i>	Spring 2 <i>April to May 5 weeks</i>	Summer 1 <i>May to June 5 weeks</i>
HWB	Food & Health	Healthy Schools: Cross Curricular: Cooking Skills; Safe and Hygienic practices; Nutrition; Food and the Consumer						
	Fitness	Daily Mile Active Stirling	Daily Mile Active Stirling	Daily Mile Active Stirling	Daily Mile Active Stirling	Daily Mile Active Stirling	Daily Mile Active Stirling	Daily Mile Active Stirling
	PE	Fundamental Physical Literacy Skills	Fitness	Dance	Gymnastics	Fundamental Physical Literacy Skills	Athletics	Outdoor / Summer Games
Languages		French BSL	French BSL	French BSL	French BSL Scots	French BSL	French BSL	French BSL
Religious and Moral Education		Christianity Values and Issues	Christianity Practices and Traditions Harvest	Christianity Beliefs Christmas	World Religions Beliefs	Christianity Practices and Traditions Easter	World Religions Values and Issues	World Religions Practices and Traditions
					1. Hinduism		1. Hinduism	1. Hinduism
Ethos and Life of school		Our Relationships School Values School Charter Fintry Forum	Black History Month Anti-Bullying Week Children in Need	Fintry Forum Learner's Voice Local Charity	School Values School Charter Fintry Forum Mental Health Awareness Week	Book Week Science Week Comic Relief Speak Out Stay Safe	Global Goals National Numeracy Week	Health Week World Ocean's Week Fintry Forum
					2. Buddhism			
Personal Achievements		Agreed between Teacher and Learner Targets Set	Agreed between Teacher and Learner Targets Set	Agreed between Teacher and Learner Targets Set	Agreed between Teacher and Learner Targets Set	Agreed between Teacher and Learner Targets Set	Agreed between Teacher and Learner Targets Set	Agreed between Teacher and Learner Targets Set



Self-management

Focusing	Integrity
Adapting	Initiative

Social intelligence

Communicating	Feeling
Collaborating	Leading

Innovation

Curiosity	Creativity
Sense-making	Critical thinking