

Wester

Overton Primary School & Nursery Class



Travel Plan

2021-2022



Introduction

Wester Overton Primary School and Nursery's Travel Plan sets out measures and best practice regarding travel arrangements for both staff and pupils. The school recognises the importance of promoting sustainable transport in order to reduce the current trend of car reliance. We believe that a School Travel Plan (STP) will help to address many of our road safety and transport problems and have a very positive effect on the local community as a whole.

The STP has been devised with input from staff, parents and pupils. Each year we undertake a period of consultation and discussion between our stakeholders and carry out various surveys and questionnaires to obtain an outline of their views.

The main aims of Wester Overton Primary School and Nursery's Travel Plan are:



To improve safety on the journey to school



To reduce car use for travel to school



To reduce congestion around the school drop-off area.



To promote safe routes to school.



To improve health and fitness of staff, pupils and parents by increasing walking and cycling to school

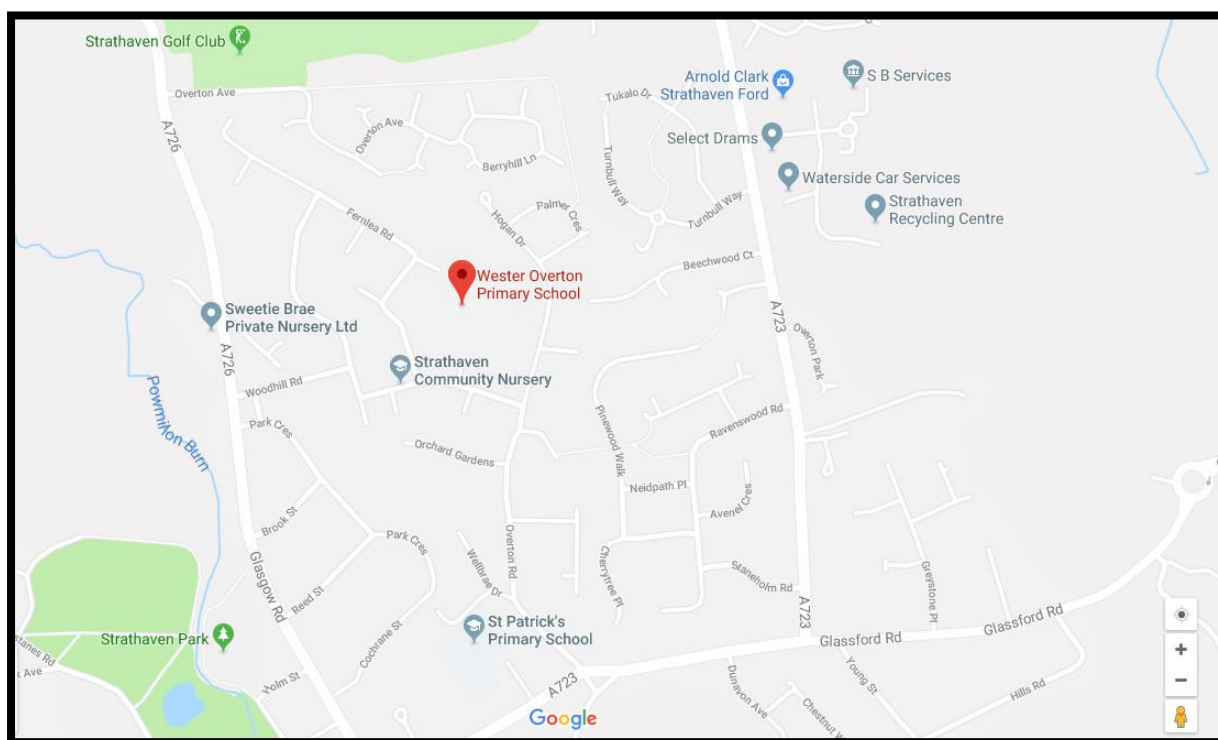


To help reduce pollution and create a better environment by using alternative travel methods to cars.

We hope to realise these aims by encouraging staff, pupils and parents to adopt sustainable transport alternatives to travel to school. These are set out and explained in the Key Initiatives with Objectives and Targets and Programme for Implementation sections.



Our School



Wester Overton Primary School and Nursery Class is situated in the market town of Strathaven in South Lanarkshire. It has an approximate role of 360 pupils and a further 64 in the nursery class.

Our nursery and school catchment includes the northern part of the town as well as the Dovecastle and Kypeview areas of the town. Primary 1-7 children within the catchment area living more than a mile from the school qualify for school transport.

The school opening hours are 09:00am – 3:00pm. Throughout the year there are a variety of extra-curricular activities on before after, or during the school day.

Our School Breakfast Club operates from 8.15-8.45am daily. The Strathaven After School Club operates within the building and is open from 07:30am – 09:00am and 03:00pm until 06:00pm.

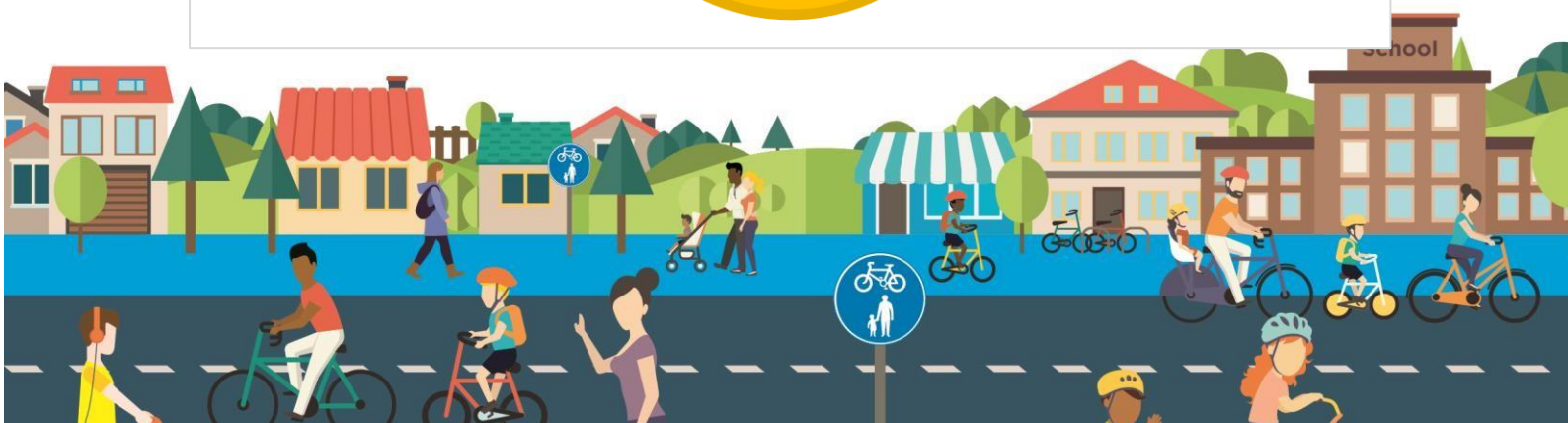
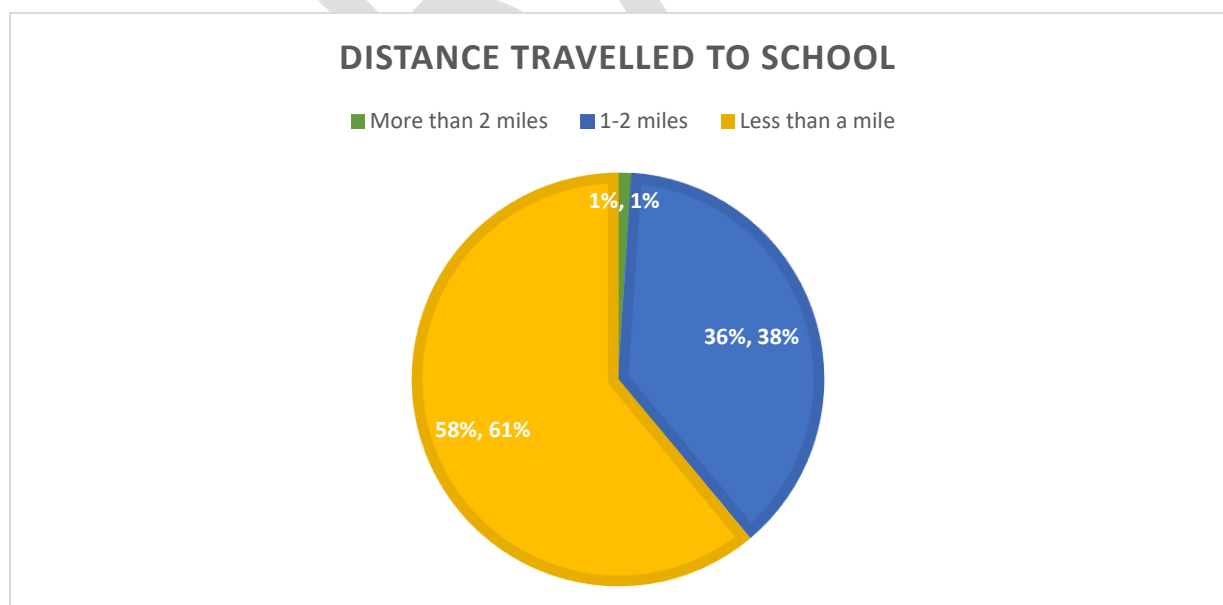
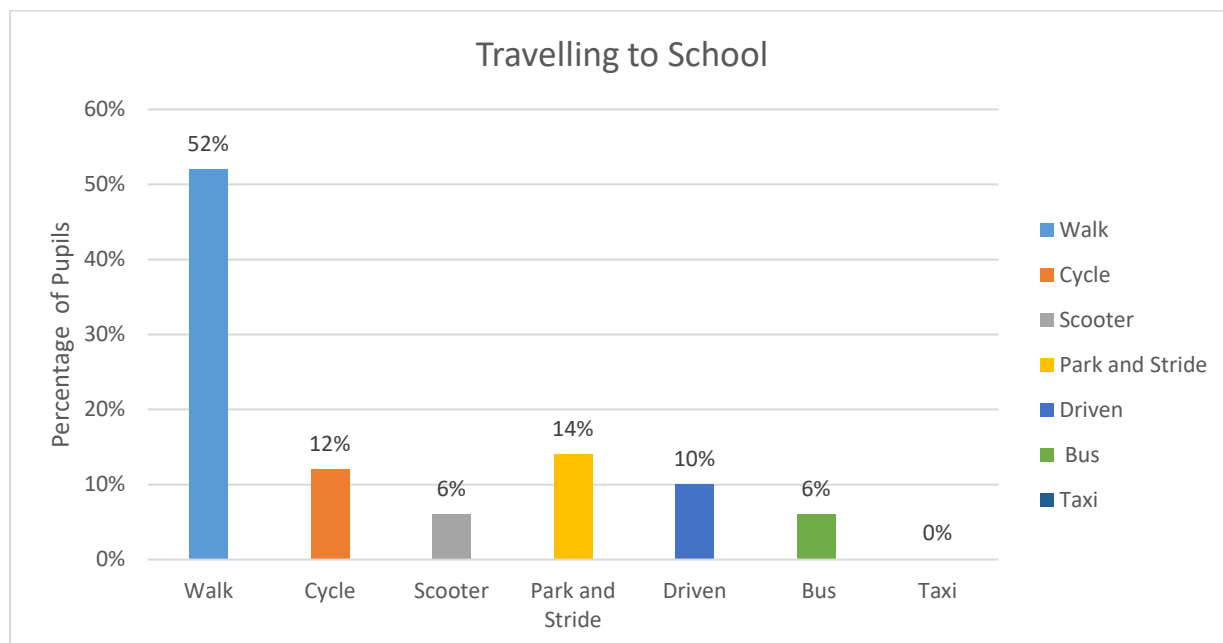
We encourage children to cycle or scoot to school. We have a cycle shelter and cycle loops in the playground.



Key Data

We consult pupils, staff and parents on their opinions on school travel. We continue to seek out the opinions and ideas of all those directly affected by the issues and actions proposed in our School Travel Plan through various means.

Each year, we collate information on methods of travel to school through our 'Hands Up Survey' and collate data on how far children travel to school. Consultation of all pupils in our annual 'Hands Up Survey'. We also regularly consult our Parent Council, our Eco Committee, South Lanarkshire Council and Bikeability Scotland.



Summary of School's Transport and Road Safety Problems

Wester Overton Primary School is located within a relatively quiet housing scheme. There are some problems with congestion and parking before 9am and at 3pm.

Unfortunately, our main challenge is the careless parking and driving behaviours of a minority of parents. Some parents dropping off their children will park momentarily on the zig zag lines on Ashkirk Road. Similarly, at our back entrance on Fernlea Road, some parents will drop their children off on the no parking zone that leads up to the gate. We also have instances of parents parking in the bus bay and on corners.

To reduce these problems, our janitor monitors our front gate area, and our senior leadership team patrol around the school grounds to assess parking and move anyone on where necessary. Parking wardens have visited the school on the request of the Head Teacher. Regular reminders are also placed in the school newsletters and our JRSOs hand out park safe leaflets at school. This has reduced congestion and careless behaviour.

Key Initiatives & Objectives and Targets

Our targets are monitored and measured against criteria set by the JRSO, Eco Committee, Staff and Parent Council. We aim to decrease cars and increase walkers by promoting cycling and walking awareness among pupils and encouraging parents to avoid using their cars where practical. We aim to reduce car use by 10% over the next two years of the travel plan.

Walking



Walking to school- all children are encouraged to walk to school. Our children are very articulate in sharing the dangers of driving near the school with their parents. We have 3 crossing patrols in the area.

Walk to School Week-We take part in the above initiative every year with pupils in school participating.

Objectives: This encourages children to walk to school whenever possible. The exercise benefits the and also improves congestion and inappropriate parking on Ashkirk Road, Fernlea Road and Overton Road.

Cycling

We encourage children to cycle and scoot whenever they can as it's a great form of exercise. We have lots of storage space for bikes and also encourage nursery children to scoot and cycle.



The Big Pedal –Cycle or Scoot to School-We take part in the Big Pedal each year. The Big Pedal is the UK's largest inter-school cycling and scooting challenge that inspires pupils, staff and parents to choose two wheels for their journey to school.



Bikeability Training

We promote cycling in the school and take all Primary 5 and 6 pupils through Bikeability training levels 1 and 2. This scheme provides our pupils with the practical skills and understanding on how to cycle on today's roads.



Bikeability gives everyone the skills and confidence for all kinds of cycling. We also encourage children in all classes to cycle or scoot to school. In our nursery, we support children to ride a bike.



Objectives: To encourage more children to walk, cycle or scoot to school. We hope that we will be able to inform pupils about cycling events that are held nationally. This will improve the general health and fitness of pupils, reduce congestion and reduce impact of cars on our environment.

Targets: To continue to participate in Big Pedal and Bikeability training each year; To introduce Bikeability Level 3 for Primary 7 children; To become a Cycle Friendly School; Increase the proportion of pupils cycling or walking to school by over 10% in the next two years.

JRSO- Junior Road Safety Officers

We teach all of our pupils about Road Safety through the Health and Wellbeing curriculum. In addition to this we also have two Junior Road Safety Officers (JRSOs) who work throughout the year to promote Road safety. These officers are trained, organise competitions and speak at assemblies. They also help carry out our surveys.



They have their own notice board in the school where they promote various initiatives such as 'Walk to School Week' and 'The Big Pedal'. Last session our JRSO's ran three differentiated competitions from P1 to P7 and carried out a whole school Assembly. This looked at reducing speed and wearing high visibility clothing in the dark. Below is the winning entry for the SLC Road Safety Calendar, created by Bella in Primary 6.



Objectives: The Road Safety lessons and JRSOs raise awareness of issues when travelling to and from school. They teach pupils about many aspects of road safety. This helps to make children safer when travelling to and from school and also when out playing with friends out of school.



Targets: To continue to support JRSOs in their jobs and raise the profile of the JRSOs. We will continue to teach pupils about Road Safety through the Health and Wellbeing curriculum. New JRSOs will be appointed and trained annually.

Publicity/Awareness

Our school travel plan is available from the school in paper format or on the school website to download. All staff and pupils are aware of the travel plan.

Objective: Raise the profile of the School Travel Plan.

Targets: Make available the School Travel Plan on the school's website; Keep notice boards and displays within the school updated with any School Travel Plan developments; Liaise with our School Travel Plan Coordinator regarding press coverage for any of our initiatives launches and events.

School Travel Plan Partnership

We will work with pupils, parents, school staff, Active Schools, the local community, South Lanarkshire Council, Police Scotland, etc.) including trained helpers e.g. Bikeability Trainers to achieve our Travel Plan.



- Road Safety Assistants – consultation over condition of surrounding roads.
- Police Scotland – visits to school.
- PSA's – support across Bikeability practical training and in class.
- Patrol Officer (Lollipop Person) – visits to school to raise awareness of the importance of crossing safely.
- Janitor and school management team – support in supervising entrance to car park and road safety at peak hours.
- Eco Committee members – continual communication regarding the important levels of air pollution around the school.



Programme for Implementation

August

Remind parents and pupils of the benefits of walking, scooting and cycling to school.
Highlight safe driving and parking around the school.



September

New JRSOs trained.
Annual Travel Survey completed.
Apply for Cycle Friendly School status.



October (annually)

JRSOs implement Winter Awareness campaign



November (annually)

JRSOs highlight International Walk to School Month



March (annually)

JRSO launch Big Pedal



March/ April

Bikeability 1 and 2 Training; Bikeability 3 Introduced



May (annually)

JRSOs promote 'Walk to School Week' initiative.



Current Achievements

As highlighted above we have been successful in many areas of both road safety and traffic management. We are committed to move forward in as many areas as we can, with partners within our community and in South Lanarkshire Council. The following initiatives have been achieved as part of our collaborative efforts:

- Bikeability 1 and 2
- Big Pedal – 1st in SLC and 3rd in Scotland.
- JRSO Committee
- Walk to School
- Road Safety Week
- Eco Flag Award
- Police Scotland Visits



Cycling Scotland



Our Plans for Monitoring and Review

Our School Travel Plan is an ongoing process of review and change. The plan will be monitored and reviewed at staff meetings, JRSO meetings, Parent Council meetings, Pupil Council meetings and Eco Committee meetings. A copy of the Travel Plan will be made available on the JRSO and Eco noticeboards and on the school website.

Additional measures are often implemented, and existing ones modified over time to suit the changing circumstances of the school year. These are then incorporated into our Travel Plan.

Our Plan is continually reviewed. We want to have targets that pupils can easily understand and highlight specific areas for improvement. It is updated at the start of every school year by the Head Teacher, JRSO Committee and JRSO & Bikeability Coordinator.

Date of next review:
October 2022



