



Neilsland Primary School Newsletter

June 2025



Dear Parents, Carers and Friends,

We have almost made it to the end of term 4. It has been a very busy year for us at Neilsland and so far, term 4 has been action-packed! We have many events and activities planned over the remaining few weeks and look forward to welcoming you over the last part of the term. As always, I would like to thank all of our families for their continued support.

Mrs Kelly

Reports

Our reports for all pupils were issued on Monday 9th June.

Fayre

Our P6 class organised a wonderful Summer fayre which took place on Friday 6th June. It was extremely well attended, and a great afternoon was had by all. We raised approximately £1500 for school funds. This includes the money raised by the Parent Council on the day.

Calderside Music Tour

On Wednesday 28th May, our P6 and P7 pupils went to Woodhead Primary School to attend Calderside Academy's music showcase. The music department performed to P6 and P7 from both schools as part of their music tour. It was a real treat and hopefully inspired some of our young people to take up an instrument!

Dance Festival

20 pupils from P3-7 took part in South Lanarkshire Council's dance festival on Wednesday 7th May in Hamilton Townhouse. They were coached by Caitlin Hutchison, our dance teacher who runs our dance clubs after school every Friday. She choreographed their routine. The troupe were absolutely outstanding, and we could not have been prouder of their performance.



Transitions

Our P7 pupils have all enjoyed very successful 2-day visits to Calderside Academy and Hamilton Grammar School. They have been engaging in a wide variety of transition activities in school too involving visits from various departments from Calderside Academy.

The P7 pupils are busy making plans for their end of term assembly. The assembly will take place on **Thursday 19th June at 1.30pm.**

We have already had our P1 induction visits on Wednesday 14th May and Wednesday 21st May. Our new P1 pupils have also been in to work with our current P1 pupils for a P.E. session, outdoor learning session and colour and play session. Our P6 pupils were very excited to meet their new buddies during their visits.

Attachment Accreditation

On Thursday 29th May, we had a visit from an Attachment Accreditation panel from South Lanarkshire Council. We have now achieved all six pledges and are a fully Attachment Accredited school - one of only three in South Lanarkshire at present. We are absolutely delighted. The panel loved their visit to the school and as ever, our pupils were an absolute joy and credit.

Four of our pupils will attend the Banqueting Hall at Council HQ on Friday 13th June to represent the school at an Attachment event. They have created a poster which reflects the ways in which our school demonstrates the Attachment pledge 'Hear Their Voice'. The event will be attended by schools from across South Lanarkshire.





Neilsland Primary School Newsletter

June 2025



Sports Day

We will be having a whole school sports afternoon on **Thursday 12th June at 1.30pm** (weather permitting). Parents/carers are welcome to attend.



Clubs

This term we have had many pupil led clubs including dance, badminton and ball games. We are very proud of the enthusiasm shown by our pupils in taking responsibility to develop their leadership skills. All clubs within the school are well attended. To date, over 80% of our pupils have attended at least one extra curricular club this session.

Classes

At the moment, we are looking at staffing and planning for 7 classes next session. Class composition and staffing are both subject to change, however, it is our intention to tell the children which class they will be in next session before we break for the Summer holidays. Our pupils will also have the opportunity to meet their new teacher on **Tuesday 24th June**.

Swimming

Our P4 pupils are almost finished their 12 week block of swimming lessons at Hamilton Water Palace. This is a fantastic opportunity for them to develop water confidence and an essential life skill. The children are making great progress and are an absolute credit to the school.



Parent Council

We welcome new members. If you would like to find out more about the work of the Parent Council, have any questions or queries you would like taken forward by the Parent Council or if you would like to join, please contact the chairperson Lindsay Backer on **neilsland.ps.pc@gmail.com**.

Gifts

As we approach the end of the session, we are aware that many families wish to share their gratitude with staff in the form of gifts and treats. Whilst we welcome the kindness and thought that goes into this and are lucky to work with families that appreciate us, we feel that this year in particular, that appreciation can be shown in other ways and ask that NO gifts are given. Should you wish to thank a particular member of staff then we ask that children complete a drawing or write a small card. We are very conscious of the 'Cost of the School Day' and the fact that family budgets are tight and we do not want families feeling under pressure to purchase gifts. Please remember you give us the best gift everyday by sending your children to school for us to teach.

School Improvement

May and June are always very busy months within the academic session. We reflect on our achievements and developments over the course of the session and make plans for the next academic session.

We have consulted with parents, pupils, as well as staff at all levels, and will use these results to inform our targets for 2025/26. We will email the School Improvement Plan to all parents/carers and it will also be available on our school website.

Mrs Fairfull Retiral Assembly

On Friday 30th May, we held a special assembly within the school to mark Mrs Fairfull's retiral. The event was attended by her friends, family and colleagues she has worked with over the years. The afternoon was amazing, with performances from all pupils within the school. Mrs Fairfull has been a key part of the Neilsland community for 25 years and will be sorely missed. We wish her the best in her new adventures as a gran and know that she will not be a stranger to the school as she plans to come into school to volunteer in the new session.



Neilsland Primary School Newsletter

June 2025



School Fund

We continually aim to reduce the cost of the school day for our pupils. We do not charge for extra curricular activities or discos.

We will welcome 'Geez a Break' back to the school with their production of Snow White on the morning of Friday 13th June.

Our P7 pupils will also enjoy a fun day on Monday 23rd June. They have various activities planned over the course of the day and will enjoy a takeaway lunch.

Our school fund has also been used to subsidise the transport cost for all trips that have taken place over the course of the session. This helps to ensure that costs to families are kept to a minimum.

Money Matters

South Lanarkshire Council are keen to provide as much support as possible for all our families. Please see the information below on Money Matters should this be of support to you:

We offer free, confidential and impartial advice - we can help check your benefit entitlement, assist with the claims process, challenge decisions and represent you at Social Security appeal tribunals. For debt issues we look at your financial circumstances, contact creditors, discuss options and give budgeting advice. Contact number: 0303 123 1008. Our Telephone Advice Line offers a similar service specifically aimed at pregnant women and families with young children. Contact number: 01698 453154.



Scottish Child Payment

Scottish Child Payment is a new benefit which started in February 2021. This payment is for families on certain benefits or tax credits.

Scottish Child Payment helps towards the costs of supporting your family. It's a weekly payment of £25 that you can get for every child you look after who's under 16 years of age. You'll get the payment every 4 weeks if your application is successful.

To find out more about this payment and other benefits or grants to which you may be entitled, please access www.mygov.scot/benefits or call 0800 182 2222.

Preloved School Uniforms and 'Rake-n-Take'

We are an Eco School and our 'Rake-n-Take' rail is available daily at the front door. Preloved school uniforms are welcomed at all times.

We have a selection of non-perishable food items and toiletries available from the front entrance each day. This is freely available to our families. We replenish the stock available regularly. If you are clearing out any cupboards, we are always happy to receive any donations.

Period Positive South Lanarkshire:

South Lanarkshire Council has been consulting young people on the use of free Period Products in schools. Sanitary Products Sanitary products are freely accessible to all who need them. Our older girls know where they can be accessed in the school without causing any unnecessary embarrassment. Out-with schools, residents of South Lanarkshire have been able to order Period Products online which are then delivered to their homes. Products are also available in various locations throughout South Lanarkshire.





Neilsland Primary School Newsletter

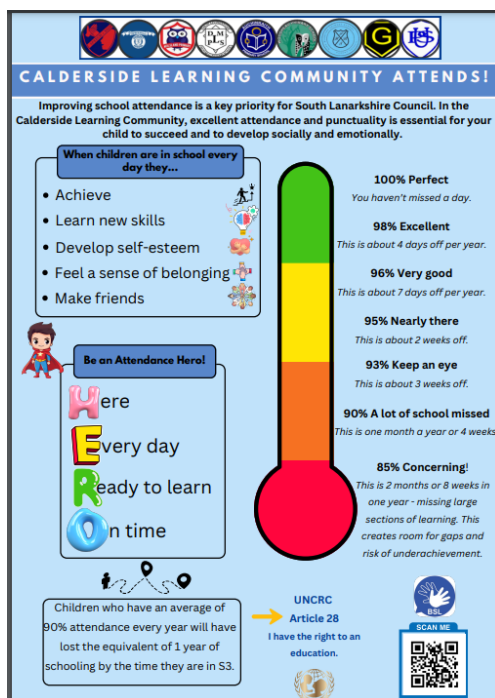
June 2025



Pupil Attendance

If your child is going to be absent from school, please contact the school before 9.00am. There is an answering machine for this purpose. Unexpected absences will be followed up by school staff, in line with SLC policy. Parents who have to take their child out of school during the day for an appointment, should send in a note in advance and collect their child from the School Office. Regular school attendance is essential for all our children to make good progress, achieve their academic potential and consequently have better chances in life. Our whole school attendance target is 95%. It is the responsibility of parents/carers and the school to achieve this. There are 190 school days across the school year, leaving 175 days to book holidays and attend non urgent appointments. We appreciate that children are unwell from time to time and that there can be exceptional circumstances for absences, but we ask that you think carefully about keeping your child out of school. There is a strong connection between attendance and achievement at school. Absence is proven to have a significant negative impact upon a child's educational attainment. We continue to monitor both punctuality and attendance on a monthly basis. The two reasons for children not attending school are due to illness and holidays. Friday continues to be the most frequent day children are ill.

Currently, our overall attendance is 93.45%



Key Dates

Monday 9th June
Thursday 12th June
Friday 13th June

Tuesday 17th June
Thursday 19th June
Friday 20th June

Monday 23rd June
Tuesday 24th June
Wednesday 25th June

Reports out
1.30pm Sports Afternoon
Geez a Break Snow White Panto
8.25am P4-7 Fun Fitness
3.00pm P1-3 Dance Club
1.30pm Shorts and Shades disco for winning house (To Be Announced)
1.30pm P7 Leavers Assembly
8.25am P4-7 Fun Fitness
3.00pm P1-3 Dance Club
P7 Fun Day
Meet the Teacher session
1.00pm School Closes