



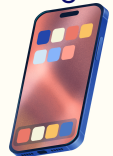
# LAW PRIMARY SCHOOL AND ELC MOBILE DEVICE POLICY

OUR RIGHTS



PROTECTION  
OF PRIVACY

At Law Primary School and ELC we are committed to fostering not only academic excellence but also the personal growth and well-being of every learner. We are proud of the strong sense of community we have built together, where every learner is encouraged to reach their full potential, playing an integral part in embedding our school rules; **READY, RESPECT, SAFE.**



## Mobile Devices

Our school is committed to providing a safe, inclusive and focussed learning environment where all pupils can thrive. In line with this, the use of personal mobile phones and smart watches by pupils during the school day is not permitted. We recognise that for some pupils they require a mobile phone or smart watch to ensure their safety walking to and from school therefore if a child does bring a phone to school they must:

TURN PHONE  
OFF AT THE  
SCHOOL  
GATE

HAND IT TO A  
MEMBER OF  
STAFF IN THE  
CLASSROOM

COLLECT  
PHONE FROM  
STAFF AT 3PM

SWITCH ON  
PHONE WHEN  
THROUGH  
THE SCHOOL  
GATE

Smart watches can be internet and camera enabled therefore can pose the same threat as mobile phones with regards to safeguarding. We ask that children do not wear smart watches to school however in exceptional circumstances we ask that the same procedure be followed.

Please note the school does not accept any liability for loss, theft or damage to a mobile device. Should you need to send a message to your child during the school day, please contact the school office who will be more than happy to pass on a message to your child.

At Law Primary School and ELC we recognise the importance of digital learning and will ensure that pupils have appropriate access to mobile devices, tables and/ or other technology when required for learning purposes. Staff will provide and supervise the use of school owned devices that they deem appropriate to support teaching, learning and inclusion. These devices will be used in a safe, controlled and age-appropriate manner.



## Cyber-Bullying

Cyber - bullying is the use of digital technologies such as social media, messaging apps, online games or email to deliberately and repeatedly harm, threaten or intimidate another person. This may include sending abusive messages, spreading rumours online, sharing images without consent or excluding others from online groups. Although, cyber - bullying often happens away from the school building, issues can still arise in school due to the aftermath of the content shared online. At Law Primary, we educate pupils about the dangers of online usage and share information around how to stay safe online. If you feel your child has or is being bullied online, the school can offer advice on managing online behaviour at home and where necessary, involve external agencies to ensure the wellbeing and safety of all pupils.