

December

Law Primary School and ELC

ENJOY READING OUR CHRISTMAS NEWSLETTER

We are excited to share with you our plans for Christmas and look forward to sharing these experiences and traditions with you and your children.

We would like to take this time to thank you for continuing to support our community. We also thank you for supporting our school. Without you we would not be able to drive the school forward or offer the experiences that we do. We wish you and yours a very merry Christmas and hope you take time to make memories with those closest to you.

Christmas Giving

Every year, we prepare Christmas parcels to give to those who may need a helping hand. We are very thankful for all your donations this session and to the support received through Kit for Kids.

We also have a selection of winter jackets and other clothes, including school uniform. These are available to anyone to help themselves. This helps with our **REDUCE, REUSE AND RECYCLE** drive. If you have any jackets or winter clothing that you no longer require, please hand in to the school office.

As a staff we have always been very grateful to receive gifts from pupils. We do not expect or ask of this but do appreciate the thought and kindness. This year, we ask that instead of giving gifts to the staff that you make a contribution to our local food bank collection which can be found at the entrance of Tesco Carluke.

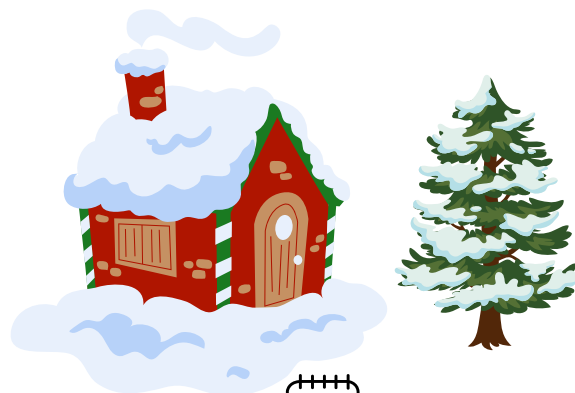
It's show time!

The CHRISTMAS SHOW

We are delighted to be presenting The Christmas Show 2025 on Thursday 11th December. This will be our P1-3 Nativity and some P4-7 children in our choir. To accommodate all families, there will be 2 shows; one at 1.30pm and one at 6.30pm. A separate letter has been issued today detailing how to book tickets.



The ELC Christmas Show will take place on Friday the 12th December at 1.30pm. The children will entertain you with a selection of Christmas songs to spread some festive cheer. Again, a separate letter has been issued on how to book tickets.



UPCOMING EVENTS

1. PTA Christmas Fayre

Date: 01/12/2025

Time: 6.30PM

Description: Come and start Christmas by supporting our school Christmas Fayre.

2. The Christmas Show

Date: 11/12/2025

Time: 1.30PM and 6.30PM

Description: Order your tickets to see the school perform

3. The ELC Christmas Show

Date: 12/12/2025

Time: 1.30PM

Description: Order your tickets to see the ELC perform

4. Christmas Parties

ELC morning 16/12/2025

P1-3 afternoon 16/12/2025

P4-5 afternoon 18/12/2025

P6-7 afternoon 15/12/2025

5. Extravanganza Day

Date: 17/12/2025

Time: all day

Description: Whole school and ELC Christmas fun day!

6. School Closure

Date: 19/12/2025

Time: 2.30PM

Description: Schools close at 2.30pm on the 19th December and reopen at 9.00am on Monday the 5th January.



Mark Your Calendars

December 2025

SU	MO	TU	WE	TH	FR	SA
		1	2	3	4	5
6	7	8	9	10	11	12
13	14	15	16	17	18	19
20	21	22	23	24	25	26
27	28	29	30	31		

GET IN TOUCH
WITH US

✉ gw14officelawps@glow.sch.uk

☎ 01698 350816

🌐 WEBSITE; Launch on 15.12.25

📍 Lawhill Road, Law, Carlisle

CHRISTMAS PARTIES



Christmas parties are as follows:

- Monday 15th December Primary 6-7 Room 9, 10 + 11 (afternoon pizza party)
- Tuesday 16th December ELC (morning)
- Tuesday 16th December Primary 1-3 Rooms 1-4 (afternoon)
- Thursday 18th December Primary 4-5 Room 6 + 7 (afternoon)

Pupils can choose what to wear on the day of their party—Christmas jumpers, casual clothes, party clothes, etc. Children should come to school wearing their chosen outfit for the full day as they will be taking part in other Christmas activities throughout the day. There is no need to go home at lunch to change for afternoon parties.

Pupils will have party food and drink as well as the chance to win some fantastic prizes. Please let us know of any food allergies. One of our traditions is that pupils in Primary 6 & 7 get pizza and fizzy juice at their parties and this will continue this year!



There are a number of significant improvements we are making this year as we continue to build an excellent school and ELC.

Our priorities are:

- VCPA Maths and Numeracy approaches
- Writing Moderation
- STEM
- Learning for Sustainability



School Improvement Plan

Update on projects and initiatives

VCPA

Staff are continuing to undertake monthly training led by SLC.

We have completed an audit of our resources and have now placed an order to replenish the concrete materials we offer children to aid their learning in Numeracy and Maths and in line with VCPA.

Learning for Sustainability

Our drive this month is to reduce, reuse and recycle. We are encouraging children to bring in preloved winter clothing and Christmas jumpers to populate our clothes rail. This is displayed at the main entrance every day.

Writing Moderation

Representatives across Carluke Learning Community have met within Law PS to finalise writing assessment planners and samples of work to be shared across professionals in all Carluke schools and ELC establishments. These will be trialled over the coming months.

STEM

At November's inservice day, staff took part in STEM skills training by using the Indi Robot. Children have been using these in class - and love them! We're now writing Mrs Daly persuasive writing pieces in the hope to buy these for the school!



ADVERSE WEATHER



In the event of snow or ice, a path from the main pedestrian gate will be treated with salt: this is the path that should be used by all those walking into the school grounds. If we feel other entrance gates/paths are too dangerous to be used, we will not open those gates: all users should then access the school using the main gate only. All emergency contact numbers should be up to date on ParentPortal. It is very important that we are able to contact you if we need to have a late opening or if we have to close early. We never make this decision lightly and it may be that it is safer to keep your children in school until the weather clears. If we decide to close or to have a late opening we will notify parents through the school app which is our main form of communication. Please ensure you, and those who care for your children download the app now. On your smartphone, go to your App Store and search for 'School App for Parents' USERNAME: LawPS PIN: 3508 When asked, select ALLOW to receive messages/notifications.

School closures are also posted on South Lanarkshire Council's website and X feed. It may be that we opt for a delayed opening. If this is the case, we will inform you of the time your child should be brought to school: please do not bring them before the stated time. This allows the staff to get to school safely. In adverse weather, it is also highly likely that the school car park will be closed: if possible, please try to walk to school or park safely in surrounding streets. The main gate must be kept clear for school transport and emergency vehicles. In the event of adverse weather, please do not call the school directly as there may not be anyone to answer your call - look out for an app message, and keep checking the SLC X feed.



SCHOOL WEBSITE

Our School website will go live on 15th December 2025

Please keep your eyes peeled on the school app and Parents Portal for the launch

CHRISTMAS JUMPERS!

Pupils and staff can wear Christmas jumpers any day in December. These must be worn with school uniform (skirt, trousers). We are encouraging everyone to reuse or recycle old jumpers, therefore if you have any that no longer fit, please hand these in to school and we will make them available for others to use.