

# Kirkton Primary School

Kirkton Avenue,  
CARLUKE, ML8 5AB  
01555 772466

**Website:** <http://www.kirkton-pri.s-lanark.sch.uk>  
**Twitter** @KirktonPrimary  
**Email:** [gw14kirktonpsoffice@glow.sch.uk](mailto:gw14kirktonpsoffice@glow.sch.uk)



Dear Parents & Carers,

Happy New Year! January is already set to be a really busy month here at Kirkton. Staff are busy planning pupil learning for this term and I am confident this will be a great term.

We are also enrolling children for our Primary 1 intake for August 2020. Children who attain the age of 5 years between 1 March 2020 and 28 February 2021 should be registered. Please bring your child's original full birth certificate and 2 items with proof of address e.g. current council tax bill, utility bill etc., dated within the last 6 months. The enrolment days and times are as follows:

Monday 13 <sup>th</sup> January 2020	10am – 12 noon
Wednesday 15 <sup>th</sup> January 2020	1.30pm – 2.30pm
Thursday 16 <sup>th</sup> January 2020	10am – 12 noon

Thank you for your continued support and partnership.

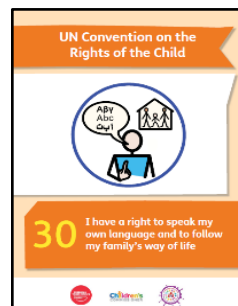
**Lynne Brennan, Head Teacher**

## Staffing

We are delighted to welcome Miss Fraser to the team, Monday, Tuesday & Wednesday, she will be working in a range of classes across the school. I am also delighted to inform you that following a successful interview Mrs Neilly will be joining us as Principal Teacher. Mrs Neilly is currently employed within another local authority and will be starting with us when the recruitment process has been concluded.

## January Right of the Month

**Article 30:** ALL children have the right to speak my own language and to follow my family's way of life. Our home challenge this month is **choose a different language and learn simple greetings and how to count to 10**. We will share some of this in class and assembly during January.



## Carluke High School

Our P7 pupils are undertaking a short 3 week block of PE with staff from Carluke High School as part of the transition programme. This is taking place on a Friday morning and pupils should come to school with their full PE kit including a change of T-Shirt. Have a wee look on Twitter to see what is happening during these sessions.

## **PTA & Parent Council**

The next PTA and Parent Council meeting will take place on **Tuesday 14<sup>th</sup> January** at **7pm** in the staffroom.

## **PE Days**

All classes receive 2 hours of PE per week. All children are required to participate and should come prepared with appropriate kit.

PE days are as follows:

Class	Days
P1	Tuesday & Thursday
P2	Monday & Thursday
P3	Wednesday & Friday
P4	Monday & Wednesday
P5M	Monday & Thursday
P5OT	Monday & Thursday
P6	Tuesday & Friday
P7	Tuesday & Wednesday

## **Reminder: Health and Safety**

As part of our policy, children should not wear any loose fitting clothing, dangling earrings and other potentially dangerous jewellery.

All items of jewellery should be removed prior to any PE lesson.

**Earrings which can't be removed, should be covered with micro-pore tape.**

## **Student Teachers**

We are delighted to welcome Miss Park and Mr. Keay to our school who are joining us as part of their teaching degrees. Miss Park is working in P5OT and will be with us for 11 weeks and Mr. Keay is in P7 for 6 weeks. I am sure you will make them a welcome part of our school community.

## **Playground Gates**

In order to improve the safety of all our children, staff and visitors, there will be a slight change to the gate procedures within the school.

With the exception of the main gate;

### **Morning**

- All gates will be unlocked between 8.30am and 8.45am
- All gates will be locked between 9am and 9.15am
- The delivery area will be locked between 8.45am and 9.15am

### **Afternoon**

- All gates will be unlocked between 2.40pm and 2.50pm
- All gates will be locked between 3.00pm and 3.15pm (when all children have left the playground)
- The delivery area will be locked between 2.45pm and 3.15pm

## **Adverse Weather Plan**

In the event of heavy snow fall or icy conditions, the Adverse Weather Plan will be implemented. This has been developed by SLC Facility Services to take account of safe systems of work for Janitorial staff working in extreme weathers.

- The HT/Janitor will make the decision that the Adverse Weather plan is to be implemented and parents/carers will be informed via Twitter and text message (if possible).
- The janitor will unlock the gates at the car park entrance only if safe to do so.
- The janitor will create a safe pathway from the gate to the main entrance and ensure all fire doors are clear.
- All pupils and staff will enter via the Main Entrance.
- No other gates will be opened and there will be no access paths created in the playground.
- Local weather conditions will be monitored and parents/carers will be kept informed via Twitter and text message.

Due to Health & Safety procedures pupils cannot gain entrance to the school before 8:50am (with the exception of children attending breakfast club).

We thank you for your co-operation and understanding in the event of any weather-related disruption. All decisions taken will be in the best interest of pupils, parents, staff and visitors.

**During any periods of adverse weather our main form of communication will be Twitter. We would ask for your support in the following ways;**

- Pass any information regarding adverse weather arrangements around your friends.
- Keep telephone calls to the office for emergencies only as your children's safety is our first priority and calls may be directed to the answering machine.

## **Dates for the diary**

In order to keep parents informed we have included all the dates we have finalised to this point. More dates will be given as they are agreed. As always, we are a busy school and dates can change. We hope you find this useful.

<b><u>Day &amp; Date</u></b>	<b><u>Event</u></b>
<b>Monday 6<sup>th</sup> January</b>	Pupils Return
<b>Monday 13<sup>th</sup> January</b>	New Home Learning Block
<b>Monday 13<sup>th</sup> January</b>	Infant Enrolment 10am – 12 noon
<b>Wednesday 15<sup>th</sup> January</b>	Infant Enrolment 1.30pm – 2.30pm
<b>Wednesday 15<sup>th</sup> January</b>	<b>P5OT Class Assembly 9.30am – Parents &amp; Carers Welcome (Doors Open at 9.15am)</b>
<b>Thursday 16<sup>th</sup> January</b>	Infant Enrolment 10am – 12 noon
<b>Friday 31<sup>st</sup> January</b>	<b>Non Uniform Day</b>
<b>Friday 7<sup>th</sup> February</b>	<b>In-Service Day</b>
<b>10<sup>th</sup> &amp; 11<sup>th</sup> February</b>	<b>February Holidays</b>

<b>Wednesday 12<sup>th</sup> February</b>	<b>In-Service Day</b>
<b>Thursday 13<sup>th</sup> February</b>	Home Learning Tasks Due to Teacher
<b>Friday 21<sup>st</sup> February</b>	<b>P3 Class Assembly 9.30am – Parents &amp; Carers Welcome (Doors Open at 9.15am)</b>
<b>Monday 24<sup>th</sup> February</b>	New Home Learning Block
<b>Friday 28<sup>th</sup> February</b>	<b>Non Uniform Day</b>
<b>Friday 6<sup>th</sup> March</b>	<b>P6 Class Assembly 9.30am – Parents &amp; Carers Welcome (Doors Open at 9.15am)</b>
<b>Tuesday 24<sup>th</sup> March</b>	Open Hour – Expressive Arts 2.15pm
<b>Friday 27<sup>th</sup> March</b>	<b>Non Uniform Day</b>
<b>Friday 3<sup>rd</sup> April</b>	2.30pm Close for Spring/Easter Holidays
<b>6<sup>th</sup> – 17<sup>th</sup> April</b>	<b>Spring/Easter Holidays</b>
<b>Monday 20<sup>th</sup> April</b>	Pupils Return
<b>Monday 20<sup>th</sup> April</b>	New Home Learning Block
<b>Friday 24<sup>th</sup> April</b>	<b>Non Uniform Day</b>
<b>Wednesday 29<sup>th</sup> April</b>	Open Hour – Applying Maths Skills 11am
<b>Friday 1<sup>st</sup> May</b>	<b>P2 Class Assembly 9.30am – Parents &amp; Carers Welcome (Doors Open at 9.15am)</b>
<b>Thursday 7<sup>th</sup> May</b>	<b>In-Service Day</b>
<b>Friday 8<sup>th</sup> May</b>	<b>Holiday</b>
<b>Monday 11<sup>th</sup> May</b>	Home Learning Tasks Due to Teacher
<b>Monday 18<sup>th</sup> May</b>	New Home Learning Block
<b>Friday 22<sup>nd</sup> May</b>	<b>Holiday</b>
<b>Monday 25<sup>th</sup> May</b>	<b>Holiday</b>
<b>Thursday 28<sup>th</sup> May</b>	<b>Parent's Night</b>
<b>Friday 5<sup>th</sup> June</b>	<b>P1 Class Assembly 9.30am – Parents &amp; Carers Welcome (Doors Open at 9.15am)</b>
<b>Monday 15<sup>th</sup> June</b>	Home Learning Tasks Due to Teacher
<b>Friday 19<sup>th</sup> June</b>	<b>Non Uniform Day</b>
<b>Wednesday 24<sup>th</sup> June</b>	1pm close for Summer Holidays

**Thank you for your continued support and co-operation.**

✂-----



Kirkton Primary School

Comments/Suggestions

If you have any comments or feedback, please complete this slip and return it to the school office.

--

<b>Name:</b>		<b>Date:</b>
<b>Pupil:</b>		