

Kirktonholme Primary School and Early Learning Class

Standards & Qualities Report 2023/2024

Kirktonholme Primary and ELC

- ❖ Non-denominational school
- ❖ Residential area of East Kilbride
- ❖ 369 learners in 14 classes
- ❖ 40 learners in ELC Playroom
- ❖ Duncanrig Learning Community

Our School Vision

We believe

Learning is the **HEART** of
Kirktonholme

Our Values & Aims

Our values and aims are woven into
our vision. You will see and feel these
values within our school community.

♥Happiness

We will provide a safe &
inspirational place where all are
included, accepted and listened
to.

♥Excellence

We will try our best in all that we
do.

♥Achievement

We will be our best self in life and
learning.

♥Respect

We will respect ourselves, each
other and our environment

♥Teamwork

We will work together and help
each other as one team.



Our Team

We have a strong KPS team
who we are attachment
informed.

Mrs Wright Head Teacher
Mrs V Miller Depute Head
Mrs Clow DHT (ELC)
Mrs Souter DHT (ASN)
19 Class Teachers
11 Support Staff
9 Early Years practitioners
10 Facilities Team
2 Music Instructors

Our school building

Our new school building
opened in 2009. Our learners
benefit from

- ❖ 14 classrooms
- ❖ an Early Learning playroom
- ❖ an Active Learning Zone
- ❖ our Treehouse Nurture space
- ❖ developed outdoor grounds
including a wooded area and
MUGA pitch

The KPS Way!

We prepare our children
for life within and
beyond our school by
embracing the **KPS** way!

Be **K**ind Be **P**repared
Be **S**afe

About our school



18% are entitled to Free School Meals
31% have Additional Support Needs
5% have English as a Second Language
0% have been excluded

How Good is Our School?

Attendance rate for 23/24 has
increased to 94.6%
KPS learners consistently
achieve higher than the
National and South Lanarkshire
levels in all areas – Reading,
Writing, Listening and Talking
and Numeracy.

Our Partners

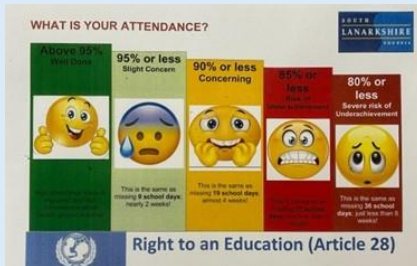


In 23/24 our learning has
been enhanced by our
Learning Community,
Computer Xplorers, artist
Alex Allen, Kilbride
Hospice, RHET, Quality
Meats, Chaplaincy team,
SAMH and Dogs Trust.

Our Achievements in 2023/2024



Happiness



Excellence

KPS Achievements

In addition to our planned areas of improvement, we have achieved the following successes

- ♥ Increase in the overall attendance
- ♥ £1500 raised for Kilbride Hospice
- ♥ Hosted our third KOP conference
- ♥ Jumpstart Jonny made his second visit to KPS
- ♥ Successful visit from Care Inspectorate
- ♥ P6 created our (unnamed) art sculpture with artist Alex Allen
- ♥ Outstanding Shrek show performed by P6&P7
- ♥ P6 & P7 participated in level 1 & 2 Bikeability
- ♥ Participation in inter schools football, netball & athletics competitions.
- ♥ Progress Jotters introduced to support family engagement and moderation
- ♥ Pupil HEART groups provide the opportunity for P4-P7 to be leaders of change within our school community
- ♥ Our Waste Warriors received recognition from South Lanarkshire Council



Achievement



Teamwork



Excellence



Achievement



Respect



Happiness Excellence Achievement Respect Teamwork

Our Progress and Impact in 2023/2024



As a result of our self evaluation programme and analysis of data, we identify our School Improvement Priorities for the year. We are currently in year 2 of our 3 year plan.

Nurture

- Neutralised our environment resulting in a calm spaces for learning
- Created the Treehouse where 25 learners regularly access a nurture provision
- Collaborated on and agreed an Attachment Informed Relationships Policy to support or attachment informed approach
- Achieved our first Attachment Informed Accreditation
- Hosted our first ELC PEEP programme with 14 nursery families being involved and initiating a strong attachment to our families
- Increased our family learning opportunities through numerous workshops – loose parts, Stay & Play
- 99% of our learners told us they feel nurtured



Reading

- Started our Reading Schools Accreditation journey. P4-P7 visited EK library & became members.
- £500 was awarded from Parent Council and used to improve classroom libraries .
- P1 staff trained and implemented FLIPP programme with highest literacy attainment level in 5 years at 84.3%
- Assessment criteria for Reading and a Tools for Reading approach has been created to support consistency and build confidence across the school in our liteacy approach.
- ELC have created and implemented a core vocabulary.



2023/2024



Questioning & Inquiry

- Teaching staff engaged in further training questioning from Pedagogy Palette.
- ELC create 3 key questions has resulted in improved curiosity and quality of interactions.
- STEM enquiry area has been created providing an additional learning space.
- STEM learning boxes were created by pupils to support STEM challenges. These were used at STEM family workshops.
- Questioning resources were provided to support the STEM challenges
- Teaching staff engaged in SLC Skills Framework training.
- Play based learning is well established at P1 & P2 and ia being extended into P3.

I wonder why?

What if..?

What do you think?

Next Steps for Nurture

- Continue to develop & embed nurturing approach
- Launch our new Realtionships policy
- Expand and build upon PEEP programme

Next Steps for Reading

- Achieve silver staus for Reading Schools
- Embed the Reading Assessment tools & criteria to support professional judgements.
- Identify and purchase additional reading resources
- Embed the ELC vocabulary programme & evaluate impact.

Next Steps for Questioning & Inquiry

- Provie opporunities for learners to lead their own learning through an inquiry based approach
- Upskill our learners iwth knoweldge of skills

Excellence and Equity in 2023/2024



Pupil Equity Funding

In 2023/2024, KPS was allocated £63,700 in Pupil Equity Funding. This budget is to reduce the poverty related attainment gap. KPS had 61 targeted learners in 2023/2024.

Participatory Budget Funding

Our Pupil Council HEART group led a consultation in how this money should be spent. It was voted upon by our whole school community. It was decided to be spent on SCHOOL TRIPS. Every class visited a museum in relation to their classroom learning. In 2023/2024, 6% of Pupil Equity Funding was spent through Participatory Budget.

Homework Clubs

All targeted learners had the opportunity to participate in a weekly homework club. 3 clubs ran over 30 weeks. In addition all learners from P3-P7 had the opportunity to participate in the KPS Dance Academy.

Attendance Project

Our PT engaged in a West Partnership CAR project to support an increase in Attendance. As a result, Fun Friday club was piloted engaging family and strengthening their connection with school. This project had a positive outcome on attendance and will be shared through West Partnership.

Nurture

Our evidence from self-evaluation told us that our children needed wellbeing supports. This resulted in setting up a new nurture provision. Funding was used to provide a teacher for 2 days a week. A new space was transformed into our Treehouse. Resources were purchased along with Assessments to help us analyse our children's needs and to measure the impact.

Participation

Funding was spent to support participation for all pupils. This included participating in sports events, residential trip, Cost of the School Day including leavers hoodies. All targeted learners participate in an extensive array of opportunities including school show, Bike ability Talent Shows, sporting events, discos, fayres.

Next Steps

Our data is telling us that the attainment gap has not reduced in literacy or numeracy. Therefore, all staff will have a greater understanding and sharpened focus on how to reduce this. Our community tells us that the **Nurture** provision has been 'life changing' and should continue. Our learners are telling us to use the funding to enhance **ICT** provision and accessibility.