



T: 01555 772580

E: gw14highmillpsoffice@glow.sch.uk

@highmillprimary



## December

Welcome to our December newsletter. We hope you enjoy finding out about our fabulous school.

### COMMUNICATION

We strive to keep parents/carers informed as much as possible. We currently use Newsletters, the School App and ParentsPortal to keep you up to date and to gain your views. We also have regular opportunities to meet with parents through parents nights, reports and informal discussions at the school gate, over the phone or through Google Classroom. Also, follow us on X (previously twitter) for regular updates @highmillprimary where we will be giving photo updates which are also linked to the News section in the school app.

To ensure you don't miss out go to your App. Store and search for 'School App for Parents'.

USERNAME: **HMPS**

PIN: **7878**

When asked, select **ALLOW** to receive notifications.

Mrs Hughes is continuing to refresh our school website. We will update you with this very soon!

School App for Parents

### STAFFING UPDATE

It is with an exceptionally heavy heart that I will be finishing up at High Mill Primary School on Friday the 20th of December. This marks the start of my maternity leave and the end of Miss MacDonald's adoption leave. It has been an absolute pleasure serving High Mill Primary School as acting Headteacher for the past 9 months and I have thoroughly enjoyed getting to know the children and families closely. I will miss you all dearly, however I promise to bring in baby for you to meet at some point in the New Year. Miss MacDonald is eager to return to see you all. She has missed you all very much. Mrs Lianne Daly

### PARENT COUNCIL CHRISTMAS FAYRE

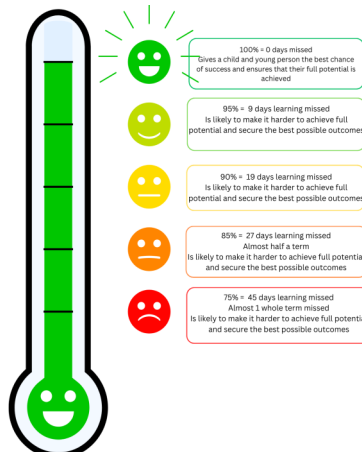
As previously mentioned on our School App, our Parent Council held a Christmas Fayre on Thursday the 5th of December and raised a fabulous £930.15.

A massive thank you to all the volunteer helpers who helped to organise, set up and clear up after the event, as well as to our local stall holders who made the event a festive success. Also a massive thank you to Mrs Cairns who worked tirelessly to pull the event together to ensure that it was as smooth as possible and easy for all attending. Money raised will go towards OUR school and OUR children and we will keep you to date with this throughout the session.



### ATTENDANCE

It is vital that your child is here at school and on time. Lateness and absences not only impacts on your child's ability to learn to the best of their potential, but also impacts on their chance to make friends and create healthy relationships and attachments with peers and staff in school. If you require support with this, please contact Mrs Cairns.



We will now be providing you with an update on your child's attendance using the Attendance Thermometer so that you can monitor your own child's attendance more closely. You can also access attendance and lateness via ParentsPortal. We will continue to celebrate good and improved attendance at our weekly assemblies.

### ADVERSE WEATHER

In the event of snow or ice, a path from the main pedestrian entrance to the school gate will be treated with salt as well as the main entrance to the school: children should continue accessing the school via the playground gate as normal. If we feel the playground is too dangerous to be used, we will not open those gates: all users should then access the school using the main entrance only.

All emergency contact numbers should be up to date. It is very important that we can reach you if we decide to close the school. We never make this decision lightly and it may be that it is safer to keep your children in school until the weather clears a little.



If the decision to close is made before the school day begins, **we will notify parents through the school app** which is our main form of communication. Please ensure you, and those who care for your children **download the app now**. We may also update media outlets such as X. School closures are also posted on South Lanarkshire Council's website and X feed. It may also be that we opt for a delayed opening. If this is the case, we will inform you of the time your child should be brought to school: please do not bring them before the stated time. This allows the staff to get to school safely.

In adverse weather, it is also highly likely that the school car park will be closed: if possible, please try to walk to school or park safely in surrounding streets. The main entrance must be kept clear for school transport and emergency vehicles. In the event of adverse weather, please do not call the school directly as there may not be anyone to answer your call – look out for an app message, and keep checking the SLC X feed.

### WINNING HOUSE FOR TERM 1

Our final assembly on Monday 16th December will determine our winning house for term 1. The winning house will have a DVD treat on the 19th. Keep an eye out on X and the school app to see our winners!

### CHRISTMAS REMINDER DATES

**P4-7 party** Wednesday 18th Dec.  
**P1-3 party** Thursday 19th Dec.  
Children wear party clothes to school.  
**Christmas lunch** Wednesday 11th Dec.

# WHAT'S HAPPENING AT High Mill Primary School

## CHRISTMAS SHOW

Miss Butler has been working exceptionally hard with all pupils throughout the school for our school Christmas Show. The shows will take place at 1.45pm on Thursday 12th of December and 9.45am on Friday at 13th of December. Tickets have been issued to those who have paid so far. If you require any further tickets then please contact the school office. Thank you Miss Butler, we can't wait to see the final production!

## CHRISTMAS EXTRAVAGANZA

Our Christmas Extravaganza will take place on the 16th. Children will take part in a variety of activities below, as well as a whole school Christmas quiz.

**Room 1:** Collaborative working through & games, baking and STEM

**Room 2:** challenges

**Room 3:** Christmas cards, snowflakes, hot chocolate and games.

**Room 4:** salt dough crafts, origami cards and movies.

## OUTDOOR LEARNING IN THE FOREST

Room 3 have started their outdoor learning sessions in the forest. Have a look on X for photo updates. Thank you to Miss Lewis for leading this and parent helpers for making this happen.

## PUPIL LEADERSHIP GROUPS

**THE READING AMBASSADORS** and Mrs Wilson are encouraging reading across the school have been creating a whole school safe space to read by working as a team to tidy our library. They are also working hard and aiming high to apply for our Reading Schools Gold Award!

## OUR RIGHTS RESPECTING SCHOOLS

group have been learning about the UNCRC Rights of the Child, creating posters to demonstrate the ABCDE of Rights and will start sharing these as weekly assemblies. Alongside Mrs Cairns, they aim to achieve the Bronze accreditation by becoming a Rights Committed School.

## THE SUSTAINABILITY GROUP

are working towards achieving the ECO Schools award with Miss Scott. Together they completed an evaluation on how eco friendly and sustainable we are as a school and have identified areas for improvement to work on in January.

## THE OPAL LEADERSHIP GROUP

are looking at improving play times and lunch times. They love outdoors and want to make activities more fun by buying in new in new playground items and replenishing old and broken items.

**THE DIGITAL LEADERS** have been learning the importance of Cyber Resilience and Internet Safety with Mrs Hughes and are creating posters to share this with the whole school.

**THE CHANGE MAKERS** have been looking outwards by visiting Law and Crawforddyke Primaries with Miss Thorpe and are discussing ways in which they can make positive changes at High Mill as a result.

## P7 SPONSORED LITTER PICK

Our Primary 7 children went their sponsored litter pick, not only to raise money for the P7 hoodies, but to make positive contributions to our local community. We will update you with a total raised via the school app.

## SPARKLE SQUAD

Mrs Cairns' Sparkle Squad are spreading festive cheer throughout the month of December. They are responsible for the Sparkle Squad post and delivery service and visiting classes to share daily kindness challenges.

## YOUR VIEWS ON OUR SCHOOL

Please leave any feedback on this month's newsletter by scanning the QR code.



## Term 2 Calendar

JANUARY		FEBRUARY		MARCH		APRIL	
1 W	HOLIDAY	1 S		1 S		1 T	
2 T		2 S		2 S		2 W	
3 F		3 M	Mental Health Week	3 M		3 T	PTA Spring Tea Outdoor Learning Rm 3; 3 of 3
4 S		4 T		4 T		4 F	Reports issued to families Schools close 2.30pm
5 S		5 W		5 W		5 S	
6 M	Term 2 begins	6 T	Outdoor Learning Rm 2; 1 of 3	6 T	World Book Day Outdoor Learning Rm 1; 2 of 3	6 S	
7 T		7 F		7 F	Room 4 P6/7 Assembly and Learning Showcase	7 M	HOLIDAY
8 W		8 S		8 S		8 T	
9 T		9 S		9 S		9 W	
10 F		10 M		10 M	British Science Week	10 T	
11 S		11 T	Safer internet day	11 T		11 F	
12 S		12 W		12 W		12 S	
13 M		13 T	Outdoor Learning Rm 2; 2 of 3	13 T	Outdoor Learning Rm 1; 3 of 3	13 S	
14 T		14 F		14 F	PTA Meeting 5 2.00pm in school Room 3 P4/5/6 Assembly and Learning Showcase	14 M	HOLIDAY
15 W		15 S		15 S		15 T	
16 T	Outdoor Learning Rm 4; 1 of 3	16 S		16 S		16 W	
17 F		17 M	HOLIDAY	17 M	P7 residential P2,3,4 Play Festival	17 T	
18 S		18 T		18 T		18 F	
19 S		19 W	INSET 4	19 W	Cross Country Event	19 S	
20 M		20 T	Outdoor Learning Rm 2; 3 of 3	20 T	Outdoor Learning Rm 3; 1 of 3	20 S	
21 T		21 F		21 F	Comic Relief	21 M	HOLIDAY
22 W		22 S		22 S		22 T	
23 T	Outdoor Learning Rm 4; 2 of 3	23 S		23 S		23 W	
24 F	Burns Scottish Event	24 M		24 M		24 T	
25 S		25 T		25 T		25 F	Dress Down Day
26 S		26 W		26 W		26 S	
27 M		27 T	Outdoor Learning Rm 1; 1 of 3	27 T	Outdoor Learning Rm 3; 2 of 3	27 S	
28 T		28 F	Dress Down Day	28 F	P7 Transition; Rugby Festival	28 M	
28 W				29 S		29 T	
30 T	Outdoor Learning Rm 4; 3 of 3			30 S		30 W	
31 F	PTA Meeting 4 2.00pm in school Dress Down Day			31 M			