

Blackwood Primary School



Our ABC to transition from ELC to P1

Article 28

Updated - May 2025

A a

A New School: We moved to our school in October 2012 and our grounds were completed in August 2013.

Car park facilities for drop off/pick up are located off Southfield Road.

During 2025 we are celebrating 150 years of Blackwood Primary School.

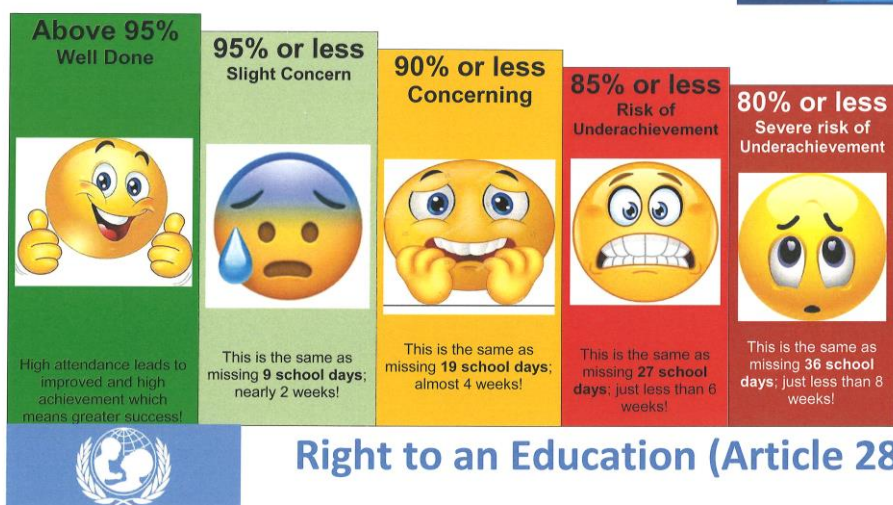


Assembly: there is a weekly assembly, usually a Monday morning, when the whole school meet to celebrate Blackwood Primary News, Religious Observance and global events. Over the year there is also a class assembly which you are cordially invited to attend. Every child participates and has a lot of fun showcasing their learning.

Attendance: When your child is absent from school please call and let us know. Children not attending school due to family holidays will be recorded as unauthorised. If a child's absence becomes a concern, we will send a letter informing you of their attendance level and will monitor closely.

WHAT IS YOUR ATTENDANCE?

February 2021



B b

Our relationships policy is a guide to our whole school community approach to behaviour management with building positive relationships at its heart. Here, we are dedicated to knowing our learners and their families to provide a safe, calm and nurturing environment for all. The UN Convention on the Rights of the Child (UNCRC) is an important legally binding agreement signed by 196 countries (as of July 22) which outlines the fundamental rights of every child, regardless of race, religion or abilities. The UNCRC is the basis for all our work.

Our school values are

<i>Excellence</i>	<i>Respect</i>	<i>Equality</i>
<i>Determination</i>	<i>Courage</i>	<i>Inspiration</i>
		<i>Friendship</i>

Our school expectations reflect the United Nations Convention on the Rights of the Child.

- Be Ready
- Be Respectful
- Be Safe



Breakfast Club: We have a free* breakfast club every morning from 8:15am. Please contact the school office if you wish to use this service. (*under review - may incur a cost 2025/26)



Buddies: All Primary 1 pupils have an identified Primary 7 buddy to help them learn our school routines.



C c

CEOP: The Child Exploitation and Online Protection Centre is dedicated to eradicating the sexual abuse of children. Parents and children need to learn how to stay safe in the virtual world.

Website: <http://ceop.police.uk/>

Child Protection: The Head Teacher *Ms Christine McMillan* is the named Child Protection Officer for Blackwood Primary School. You can speak to her in confidence at any time.



There is ongoing concern around online vulnerabilities which include

- Oversharing
- Cyber Bullying
- Sending and receiving inappropriate content
- Connecting with people they don't know online
- High risk of sexual exploitation

It is important for parents to understand risk and safeguarding procedures, as children access online and social media in the home.

School Chaplain: Our school chaplain is Rev George Lynd and is based at Kirkmuirhill Parish Church. Our school chaplain is invited into school regularly and we visit the church termly.

Charities

Annually, we support Children in Need which takes place in November.

Other charities may be supported throughout the year.



Classroom Organisation: The maximum class sizes are:

- P1 25 Children
- P2 & 3 30 Children
- P4-7 33 Children
- Any composite 25 Children

Communication: We use many different forms of communicating in school.

- Diary
- Letters / Monthly Newsletter - all sent via email
- Google forms
- Email Via ParentPay
- Telephone
- Text Messaging
- Face to face meetings- please make an appointment
- School Gate- a member of the SMT is available at the start and end of the school day
- Website - www.blackwood-pri.s-lanark.sch.uk

Cost of the School Day: We are mindful that we take into consideration the Cost of the School Day as we plan our curriculum and activities. This has featured strongly in SLC improvement agenda since 2020.

Curriculum for Excellence: This is the curriculum framework in place at Blackwood Primary School. It enables children and young people to develop their capacities as successful learners, confident individuals, responsible citizens and effective contributors.



Curriculum for Excellence

<p>7 Principles</p> <ul style="list-style-type: none"> • Challenge & Enjoyment • Breadth • Progression • Depth • Personalisation & Choice • Coherence • Relevance 	<p>4 Values</p> <ul style="list-style-type: none"> • Wisdom • Justice • Compassion • Integrity 	<p>8 Curriculum Areas</p> <ul style="list-style-type: none"> • Health & Wellbeing • Literacy & English • Numeracy & Mathematics • Science • Social Studies • Expressive Arts • Technologies • Religious & Moral Education
	<p>4 Purposes</p> <ul style="list-style-type: none"> • Successful Learners • Confident Individuals • Responsible Citizens • Effective Contributors 	

4 Cross Cutting Themes

Sustainability, Enterprise, Creativity & Citizenship

3 Areas of whole staff responsibility

Literacy, Numeracy, Health & Wellbeing

Levels of Achievement

Level	Experiences
Early	In pre-school and in Primary 1
First	By the end of P4 but earlier or later for some
Second	By the end of P7 but earlier or later for some
Third	In S1-S3 but earlier or later for some
Fourth	Fourth level equates to SCQF Level 4 General
Senior	In S4-S6 but earlier for some

Website: www.curriculumforexcellencescotland.gov.uk

D d

Dates for your diary will be sent home at the start of the new session

Thursday 14th August	
Start:	Staggered from 9.30am to 10:00am
Collection:	2:45pm
Friday 15th August	
Start:	Staggered from 8:50am
Collection:	2:55pm
Monday 18th	Normal school hours 9:00am - 3:00pm



On the first day, all children will enter via the main gate and wait with their family in the MUGA area to be collected by their class teacher. (if it is raining ... enter through the main door)

Diaries: This is a form of communication between home and school which is uniformed throughout the school. Please check your child's diary every night and ensure they bring it to school with them every day. It is expected that all diaries be **signed** on a weekly basis.

E e

ECO: The school has achieved Green ECO Flag status and is working on a maintenance action plan. This is the highest award in the ECO programme. Sustainability is a priority across Scotland and all children are actively encouraged to reuse, recycle and reduce.



E Mail: Is a useful way of keeping in touch. Here is the address:

office@blackwood-pri.s-lanark.sch.uk

Emergency Contact: It is essential that we have accurate records for all our children so that we can get in touch with you or a named emergency contact should the need arise. Please ensure to inform us of any changes. Shortly after your child starts school, you will be asked to complete a consent form giving all your details.

Entitlements:

Free School Meals

Children of parents who receive the following benefits are entitled to a free lunchtime meal for their child:

Income Support, Universal Credit (where your take home pay is less than £796 per month), Job Seeker's Allowance (income based), Employment and Support Allowance (income related), Working Tax Credit and Child Tax Credit (where your gross annual income does not exceed £9,552 as assessed by the HM Revenues and Customs), Child Tax Credit Only (where your gross annual income does not exceed £19,995 as assessed by the HM Revenues and Customs) or receive support under Part VI of the Immigration and Asylum Act 1999.

If you are in receipt of Housing Benefit and/or Council Tax Reduction from us there is no need for you to apply online, we will use the information we hold to automatically award free school meals (P6 to S6) and/or school clothing grants (P1 to S6) to eligible families.

We would encourage parents of children who are in receipt of any of the above benefits to take up this opportunity of having a meal provided for their child when they are at school. Arrangements are in place so that children who receive free meals are not singled out and we encourage all children to remain in school at lunch time. All pupils in P1-P5 receive a free school meal.

Clothing grant

In certain circumstances the Council provides support to parents/carers for the purchase of school wear.

Applications can be made online at www.southlanarkshire.gov.uk. If you are required to submit evidence of your Tax Credit income it is important that a copy of this evidence is attached to your online application. Should you require further information or if you are unable to submit an application online then please contact the helpline number 0303 123 1011 (option 5).

F f

Fairtrade is about better prices, decent working conditions, local sustainability and fair terms of trade for farmers. We are a Fairtrade school.



First Aid: You will be contacted immediately if there is a serious injury. Children access first aid via the school office. All medication must be labelled and signed for before school staff can administer.



G g

Gym time: The Scottish Government requires every school to provide a minimum of 2 hours physical education per week. P.E. is an essential part of a child's physical development. P.E. will take place indoors and outdoors and it is suggested a complete change of clothes is provided on gym days.

Indoor PE Kit: A t-shirt, shorts and gym shoes are vital in ensuring your child's safety and comfort for indoor P.E.

Outdoor P.E. - A waterproof jacket, outdoor trainers, jogging bottoms, t-shirt and sweatshirt.

H h

Handwriting: A multi-sensory approach is used to develop handwriting. The children will learn handwriting patterns through nursery rhymes to enhance correct letter formation.

Health: It is important that we encourage children to eat healthy snacks. In school we encourage children to drink water throughout the day and ask that no diluting juice or fizzy drinks be sent.

Our school is also a **nut free zone**.

Health and Wellbeing: "Learning through Health and Wellbeing promotes confidence, independent thinking and positive attitudes and dispositions. "

Building the Curriculum 1

Learning in Health and Wellbeing, ensures that children and young people develop the knowledge and understanding, skills, capacities and attributes which they need for mental, emotional wellbeing now and in the future.

Learning through HWB enables children and young people to:-

- Make informed decisions in order to improve their mental, emotional, social and physical wellbeing
- Experience challenge and enjoyment
- Experience positive aspects of healthy living and activity for themselves
- Apply their mental, emotional, social and physical skills to pursue a healthy lifestyle
- Make a successful move to the next stage of education or work
- Establish a pattern of health and wellbeing which will be sustained into adult life, and which will help to promote the health and wellbeing of the next generation of Scottish Children

The HWB curriculum also includes Sexual Health and the national resource *Relationships, Sexual Health and Parenthood (RSHP)* is used to promote this. You can view this online at <https://rshp.scot/>



Part of our HWB curriculum also involves work to promote the GIRFEC (Getting It Right For Every Child) agenda, where the children learn about the SHANARRI Wellbeing Indicators - Safe, Healthy, Achieving, Nurtured, Active, Respected, Responsible and Included.

HMie

The school was inspected in December 2019. The report is available online. <https://forms.gle/zbaCQ9pUKUnRk6us5>



Holidays: School holiday information can also be found at www.southlanarkshire.gov.uk. It is South Lanarkshire's policy to encourage all parents to plan family holidays during these times. In the event of this not being possible, please inform the school in writing. All holidays within the school term will be recorded as unauthorised absences.

Homework: At the early stages it is vital that your child is supported and encouraged with homework tasks. Homework is for reinforcement and should be a relaxed, happy time spent together. Homework tasks will be allocated on a weekly basis. There will be a wide variety of homework tasks including games.



Houses: There are 3 houses in the school.

Beech - Blue A - G

Oak - Green H - M

Sycamore - Red N - Z

Your child will be allocated a house depending on their surname, for their time at Blackwood Primary. House Captains and Vice Captains are selected from Primary 7 and points are awarded across the school with houses working towards a house treat at the end of each term.

I i

I.C.T: The school uses ICT as a tool for learning. A user agreement form is issued and signed at the start of the new school year. Parents are advised not to use Social Media Sites to discuss school business or to post photographs of school events. (Section 127 of the Criminal Justice and Licencing Act.)

Indoor Shoes: Children are asked to leave a pair of black gym shoes in school. These can also be used for indoor gym. These gym shoes will have to be replaced over the course of the year due to wear and growth. Please label.

Intervals: There is a morning interval during the school day at 10:30am, which lasts for 15 minutes. Most children have a small playtime snack. Playground equipment is available for playing games. During intervals there are always adult supervisors in the playground.



J j

Junior Road Safety Officers (JRSO): Senior pupils in our school raise awareness and support our road safety programme.

K k

Keep things clean and tidy. Children should come to school prepared for a busy day. School bags come in all shapes and sizes, just be practical!

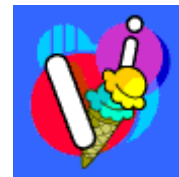
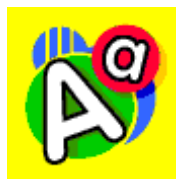


When buying your child's school bag and accessories please avoid Football colours as per SLC policy.

L I

Labels: Please label all your child's clothing. This includes sweatshirts, jackets, P.E kit, hats and gloves. Many items end up lost when they are not labelled.

Learning: Children come to school to learn. They will experience a whole range of learning styles and work with a range of people. They will also experience a wide range of resources and learning environments. Encourage your child to talk about their day at school. Any worries or concerns don't hesitate to get in touch.

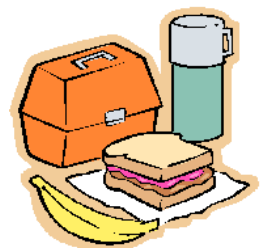


Learning Journals: This is an environmentally friendly online approach for you to stay in touch with your child's play-based learning and allow you to comment directly with the class teacher(s). It allows you to have access to the development and progress of your child as they progress through Early Level.

Literacy: The literacy curriculum is developed using an active literacy learning approach. Many resources are used to provide children with choice and challenge in their learning. This includes the development of Reading, Writing and Listening and Talking. We are a Gold Reading School.



Lunch: We have a dining hall in our school. Children can choose from the menu which has a three-week rotation. From January 2022, this facility is **free** for all pupils in Primary 1 - Primary 5. Children in Primary 6 - Primary 7 are charged at £2.62 per day. Water is provided to drink, however, milk is available to buy at 30p per carton. This can be ordered via parents pay. Alternatively, parents can provide children with their own packed lunch.



M m

Maths: The maths curriculum is developed using an active learning approach which provides children with choice and challenge. Many resources are used including games and ICT.



Medical Information: Please provide up-to-date medical information. All medication must be stored in the school office, and a permission form signed.

N n

New: Starting school is a new experience for pupils and parents. Always stay positive and if you have any concerns, please do not hesitate to contact the school.

Numeracy: Numeracy is a skill for life, learning and work. We are numerate if we have developed the confidence and competence in using number which will allow individuals to solve problems, analyse information and make informed decisions based on calculations.

Nuts: This is a nut free school. Please check snacks for nut content and avoid. This includes - peanut butter, snickers, muesli bars etc.

O o

Outdoor Learning: Children will experience outdoor learning. Annual consent forms are signed to allow children to learn about our community in our community. When additional clothing is required, a note will be sent home.

P p

Painting is a popular activity in Primary 1. Please provide an old shirt to be used by your child. Accidents do happen, *Apologies in advance!*



Parent Helpers are always welcome in the school. Please contact the school office at any time, if you are able to help out.

Parental Partnership is important. The door is always open. Please contact the school if you have any concerns.



Parent Forum: All parents with children attending Blackwood Primary School automatically become members of the Parent Forum.

The **Parent Council** is formed from the Parent Forum. An invite is extended to everyone to come along and join in.

The **PC** work tirelessly to support all the young people in this school and ELC. Recent activities that your child has benefitted from are-

- Sumdog subscription
- ClickView subscription (inc Disney +)
- Christmas treats
- Subsidised Primary 7 Leavers Hoodies

What can you do to help?

- Attend the meetings - only 5 per year
- Support the events and help fundraise

From the comfort of your own home ...

You can support the Parent Council when you shop online using easyfundraising.

As we shop more readily on the internet this is a great way to support the school and ELC without having to do anything. Our cause is listed as Blackwood Primary Parent Council - Lanark.

Click on the link below to register your account :

<https://www.easyfundraising.org.uk/register-your-good-cause/?invite=49bjqz&referral-campaign=s2c>



Please sign up and use this app to fundraise as you spend for Blackwood Primary and Early Learning Centre.

*Username - **Blackwood Primary Parent Council - Lanark***

Contact details for the Parent Council are
blackwoodparentcouncil@gmail.com

ParentPay: South Lanarkshire Council use an online payment system within schools/nurseries in South Lanarkshire to provide online payments for schools, income management for schools, dinner money administration and an integrated parent communication system.

This provides a more convenient way for parents to pay for school meals, school trips and much more online, using a secure service called ParentPay, and this will enable you to make secure payments online using your credit or debit card.

ParentPay offers you the freedom to make payments whenever and wherever you like, 24 hours a day, 7 days a week - safe in the knowledge that the technology used is of the highest internet security available.

You will have a secure online account, activated using a unique username and password; you will be prompted to change these, and to keep them safe and secure. If you have children in both primary and secondary school, you can create a single account login for all your children.

We encourage Parents / Carers to sign up to ParentPay, as we also use the system as an alternative communication tool. You will be issued with further information once your child starts in Primary 1.



ParentsPortal
parentsportal.scot

Generations of Scottish children have acted as mini-messengers, couriering literally millions of notes between schools and their parents.

This has been done via the 'school bag run', when sometimes important information has been entrusted for delivery after being crumpled in beside jotters, PE kits and the remains of today's packed lunch.

In support of South Lanarkshire Council's ambition to continue to improve in parental engagement, we have now partnered with the Scottish Governments' Improvement Service to bring you parentsportal.scot.

Parentsportal.scot is a new digital service to help replace the traditional 'school bag run' by providing direct communication to parents and carers through a growing suite of online services. Through parentsportal.scot parents and carers will be able to grant permissions for school trips, view school lunch menus, view attendance, complete the annual data check, book parents evening and link directly to ParentPay to make payment for school meals, to name but a few.

Once your children are linked to their school you will start to receive communications from the school via parentsportal.com and over time will become your one-stop-shop for everything to do with your child and their school.

You will receive a letter in August with all the information you require to link your child to this service.

PARKING: This is an ongoing issue at Blackwood Primary School and ELC. South Lanarkshire Council have issued parents with leaflets which encourage you to park and stride or walk your child safely to school.

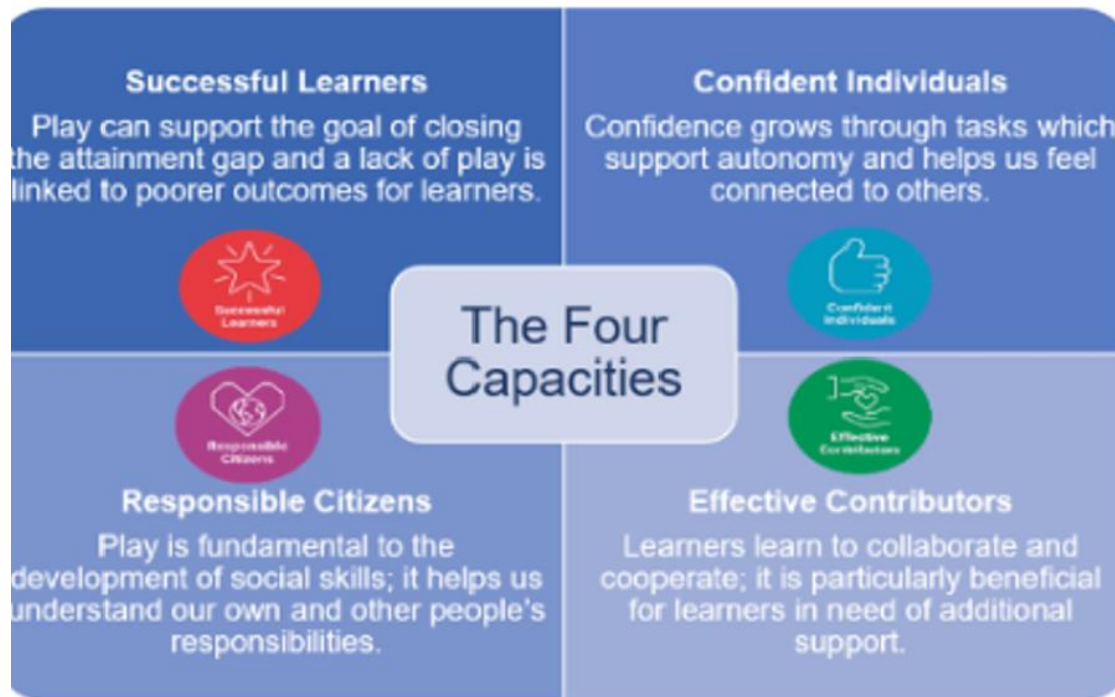


Please avoid parking on Carlisle Road and use the car park on Southfield Road.

Phonological Awareness is a pre-requisite for successful reading. Your child will work orally on rhyme, alliteration and syllable segmentation. Nursery rhymes are used to develop these skills. Listen carefully to your child and make sure they can recite the whole rhyme.

Photographs: The school photographer visits the school annually. Permission is also sought from South Lanarkshire Council for the school to take photographs.

Play Pedagogy: "Play Pedagogy meets the needs of learners and enables them to take forward their learning in a way which is developmentally appropriate"
Education Scotland 2020



Pupil Voice: We actively encourage pupil voice in school and learners have the opportunity to represent their class and individual views on areas of school improvement on a pupil voice group.

Q q

Questions: Children ask lots of questions. Take the time to sit with your child and answer their questions.



If you have any questions, please contact the school. At Blackwood Primary School we are proactive in seeking a solution!

Questionnaires: These are used to consult with parents. Please return these as and when requested. Your voice matters!

R r

Reporting: Parents are formally invited to attend parents' evening twice a year (usually October and April). Diaries are used to report progress throughout the year, and a formal report is issued in Term 4.

Road safety: Encourage your child to cross with the school crossing patrol and be aware of road safety on route to school.

Routines: Young children enjoy the routine of school and are very busy in the school day. This may affect their routines at home if they are tired.

S s

Safety is of the utmost importance to us as well as to you. It would help us if you could inform the class teacher when a different adult is collecting your child or when you change your normal arrangements.

The SMT is usually present at the school gate every morning and all staff help at the end of the day to ensure all children are collected.

School Closure: During exceptional circumstances the school may be closed. A text message will be sent to the 1st emergency contact. Updates would also be put on the school website. In times of inclement weather, the "grapevine" and a common sense approach will be used as necessary.

Please also check South Lanarkshire Website
www.southlanarkshire.gov.uk

Scoot to School: We provide the opportunity for all children to 'Scoot to School'. If your child wishes to take part in this initiative, consent forms are provided at the school office. The school has a stock of scooters, helmets and hi-vis vests for children to use.



Please note cycling to school (and the storage of bikes) is limited to Primary 7 & 6 who complete "Bikeability".

Senior Management Team (SMT): There are 5 members of the Senior Management Team who will be happy to help you at any time or by appointment.

Ms McMillan Head Teacher
Mrs Bowman Depute Head

Miss Colquhoun Principal Teacher
Mrs Canning Principal Teacher (Wed/Thursday/Friday)
Mrs Colquhoun Principal Teacher (Mon/Tuesday)

Social Media: South Lanarkshire Council issue guidance for the Parental Use of Social Media. As a school we respectfully ask that Social Media i.e. Facebook is not used to discuss any school issues that you may have. This is to protect yourself, your child and South Lanarkshire Council Employees. (Section 127 of the Criminal Justice and Licencing Act.)

SportScotland Award: Blackwood Primary School has achieved the Gold SportScotland Award.



Staffing: During the school week, your child will have a minimum of 2 teachers working with their class.

Star of the Week: This is a whole school approach, to celebrate attainment and achievement at Blackwood Primary School and ELC.



T t

Times of the school day: The school day is divided into thirds 9:00-10:30, 10:45-12:15 and 1:00-3:00.



Toilets: Please encourage your child to ask to go to the toilet. Accidents will happen. With the best will in the world children can sometimes get caught short! We keep a supply of spare clothes. If your child needs any of these clothes at any time, we would be grateful if you could wash them and return them to the school.

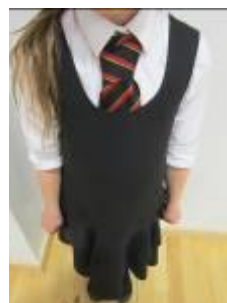
Transition Dates: Tuesday 10th June 1:15pm - 2:45pm and Wednesday 11th June from 9:15am - 12:00pm. Children who attend Blackwood Primary ELC should attend as normal. Children who attend another ELC should be dropped off and collected from the main door. Please provide a snack and bring a water bottle.

U u

Uniform is smart, practical and an economic way of clothing your child for school. The red sweatshirt, white polo shirts and ties can be ordered or purchased through the school office. Cardigans should be red. Skirts, pinafores and trousers should be black. Remember to **LABEL** every item.

A **warm waterproof jacket** is recommended as children will be outside for playtime and lunch time.

School shoes should be black - Black trainer style has become popular! In our school children change their shoes, therefore, indoor black plimsolls should be brought, labelled and left in school. These need to be replaced regularly.



V v

Velcro: If your child finds laces and buckles difficult buy Velcro shoes. It will allow your child to be independent.



Vision and Values

Statement - *"In our Respectful school, effective learning and teaching takes place to inspire individuals to attain and achieve excellence. Inclusive in ethos, we celebrate the individuality, skills and talents of ourselves and others."*

Values - Friendship, Courage, Inspiration, Excellence, Respect, Equality and Determination



W w

Water: Pupils are asked to bring a water bottle to school daily.

Weather: Our climate is unpredictable!
Please think about waterproof jackets and wellies! (and hopefully hats and sunscreen too!)



Writing: Children will be encouraged to "write" at every opportunity. We call this "have-a-go". Always ask your child to read what they have written and respond in a supportive and positive manner. Formation of letters is a very tricky process for young children, and this will be addressed through multi-sensory activities throughout the year. High value is placed on the child's own work and efforts.

X x

EXcitement & **EX**pectations ... know your child and work with us!

Y y

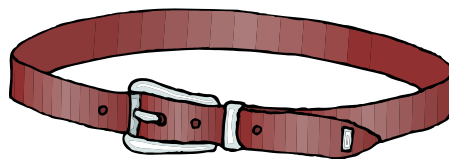
You now have a child at school

- Label all your child's belongings
- Buy shoes without laces
- Encourage self-help skills, i.e. putting on your jacket and shoes; using a knife and fork at lunchtime
- Explain to your child that if anyone hurts them to always tell an adult

You can become involved in the Parent Council. Please play an active and supportive role in the school.

Z z

Zips, belts, laces, tights, buckles etc can be difficult for young children. Practise getting dressed and undressed and folding clothes into a neat pile. This will help on gym and drama days.



ZZZZZ Your child will have had a busy day at school. Good bedtime routines benefit everyone!



Education Resources

Interim Executive Director: Anne Donaldson

Blackwood Primary School – Head Teacher: Ms Christine McMillan

Carlisle Road

Blackwood

Lanark

ML11 9AT

Telephone – 01555 892438

Email – office@blackwood-pri.s-lanark.sch.uk

Website – www.blackwood-pri.s-lanark.sch.uk

Council Website – www.southlanarkshire.gov.uk