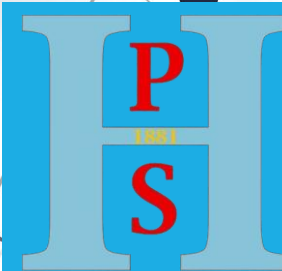


1881



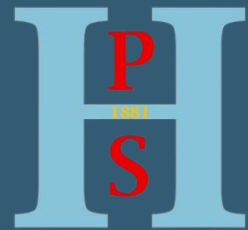
Standards and Quality Report

2024



ABOUT OUR SCHOOL

Hallside Primary School is a non-denominational school situated to the east of Cambuslang. The school serves a catchment area comprising private and local authority housing and covers the village of Hallside, almost all of Drumsagard village, some parts of Halfway and Westburn villages. The school is part of the Cathkin Learning Community. This session we have a current roll of 288 children over 11 classes. Data from last session highlights an equity profile of 18% and 5% of learners have English as an additional language.



H
P
S





School Values



School Motto:
When We
Work
Together,
Everything Is
Within Our
REACH

School Ethos



H
P
S



Our Collective Responsibility or Our School Rules



COLLECTIVE RESPONSIBILITY

BE SAFE

BE KIND

BE LEARNING



ACHIEVEMENTS

Over the course of Session 23-24 we achieved lots through working together
As 'the greatest team'.



When We Work Together,
Everything Is Within Our
REACH

1881

H
P
S





Attachment Informed Practice Award

The school community was delighted to be awarded SLC Attachment informed practice award for our work in meeting the Attachment pledge “Act to Make a Difference”



HALLSIDE HEROES

Our school rules:

- Be safe.
- Be kind.
- Be learning.

Our school values:

- Show **Respect**. Strive for **Excellence**. Be **Active**.
- Have **Confidence**. Display **Honesty**.



Digital Schools Award

The school community was delighted to be awarded the Digital School Award.





Silver Reading Schools Award

The school community was delighted to be awarded Reading School Silver Award.





Learning for Sustainability

The school community was delighted to be awarded the Cycling Friendly Scotland award.



P3 shared their Sustainability learning with parents/carers and at a special Whole school assembly.



STEM

Continued to develop STEM opportunities across the school.

- STEM through stories
- STEM Young Leaders of Learning
- STEM Club
- Outdoor STEM



We were making hats for Rosie Revere's Uncle Fred the Zookeeper.

I can design and construct models and explain my solutions. TCH 1-09a

I explore and discover engineering disciplines and can create solutions. TCH 1-12a

I can use exploration and imagination to solve design problems related to real-life situations. EXA 1-06a





PUPIL LEADERSHIP GROUPS

Increased opportunities for pupils to lead change.





Heart of the Community Appeal





Equity

- Participation Active Schools Events, Whole School Trip





Equity

Opportunity

- Talent Contest, School Show, Choir





Equity

Opportunity

- P7 Residential





Equity

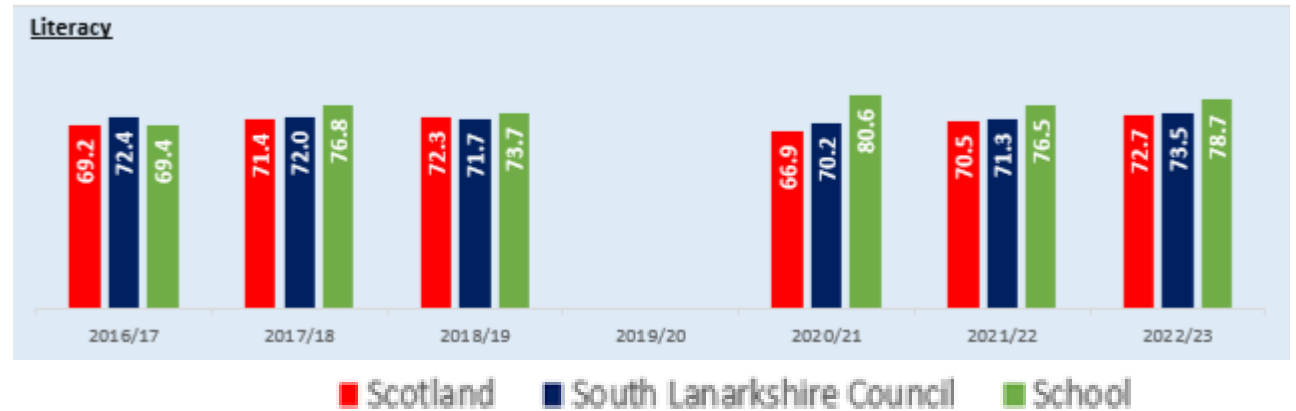
- Forest School Sessions with Project 31
- In School Nurture Intervention
- IDL Literacy Group
- NELI (Listening and Talking Sessions)





Attainment

- Increased Achievement of a Level Literacy results (see graph).
- Increased Achievement of a Level Maths results session 23/24 (local data).



Curriculum Rationale

What we're doing and why

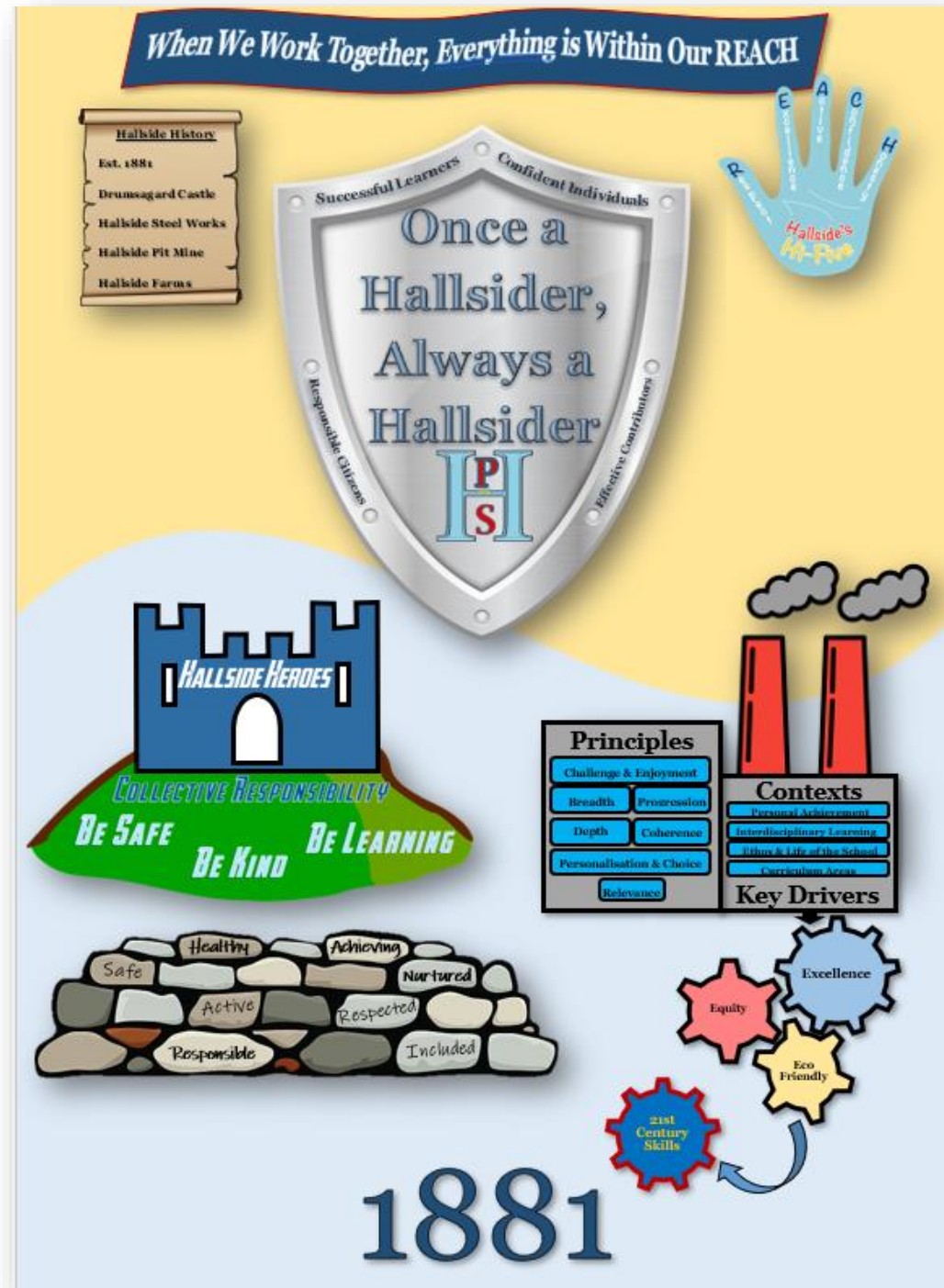
Our school context

What is important to us

Know our history, prepare for the future

We drive forward change based on our rationale for our curriculum

HS



**Priorities and Key Actions
Based on Contextual Analysis**

**Priority 1:
National
School**

Improve attainment in literacy and numeracy
Continue to review curriculum and its implementation, to meet the needs of all learners, ensuring excellence and equity



**Priority 2:
National
School**

Improve attainment in literacy and numeracy
Further develop assessment, moderation and tracking procedures



**Priority 3:
National
School**

Improvement in children and young people's health and wellbeing
Further develop attachment informed practice consistently across the school community



**Priority 4:
National
School**

Closing the attainment gap
Ensure equity of opportunity

Area	Key Actions
Curriculum	Reviewing the quality of life lessons in school
Teaching	Empowering teachers, transforming learning, strengthening performance
Assessment	Ensuring accuracy and consistency in marking & feedback to the benefit of all learners
Wellbeing	Ensuring all children have a positive experience of school

