

CAULIFLOWER CARDS: CHRISTMAS ART IDEAS

Ages
3-11



Go to our
online gallery for
more ideas:
[cauliflowercards.
co.uk/christmas-
gallery](http://cauliflowercards.co.uk/christmas-gallery)



Primary Resources

Inspiration for Teachers at Christmas Time



Cauliflower Cards:

CHRISTMAS ART IDEAS

Written by: Erika Speirs

Book Design: Joanne Lovidge-Nash



Published in the UK by:
Cauliflower Group Ltd
Unit 52 Woolmer Way
Bordon, Hampshire
GU35 9QF

Content Copyright © Erika Speirs 2011

All rights reserved. The copyright of all material published in this edition
remain the property of the Publisher and Author.

The right of Erika Speirs to be identified as the author of this work in accordance
with the Copyright, Designs and Patents act 1988.

All works of art have been recreated from a range of popular ideas collated directly from UK
based schools and therefore not considered subject to copyright.

A catalogue record of this book is available from the British Library.



Contents



Introduction & Artwork Guidelines 2-3

All Ages	Santa's Belt	4	5-6	6-7	Crib Collage	38-39
All Ages	Snowman face with Robin	5	5-6	6-7	Sparkly Christmas Cracker	40
All Ages	Angels Collage	6-7	5-6	6-7	Christmas Presents Collage	41
All Ages	Tissue Paper Christmas Pudding	8-9	5-6	6-7	Fingerprint Snowmen	42
All Ages	Wax Resist Stable Scene	10	6-7		Christmas Tree Collage	43
All Ages	Winter Robin	11	6-7		Snowy Town	44
All Ages	Gold Star Collage	12	6-7		Silhouette Tree Scene	45
All Ages	Three King Collage	13	6-7		Fingerprint Christmas Paintings	47-48
All Ages	Santa Legs	14	6-7		Penguin Family Collage	49
All Ages	Owl on a Branch	15	6-7		Gingerbread Men	50
Tots	Handprint Christmas Trees	16-17	7+		Simple Cut Snowflakes	51
Tots	Handprinted Reindeer	18-19	7+		Christmas Fireplace	52
Tots	Handprint Robin Redbreast	20	7+		Simple Bethlehem Collage	53
Tots	Simple Collage Christmas Tree	21	7+		Collage Snowflakes	54
Tots	Handprint Santa	22	7+		Baubles and Branch Collage	55
Tots	4-5 Printed Robin	23	7+		The Three Kings Crown	56
4-5	Shepherd Collage	24-25	7+		Stained Glass Windows	57
4-5	5-6 Christmas Tree Scene	26-27	7+		Stylised Christmas Trees	58
4-5	5-6 Christmas Candles	28-29	7+		Framed Collage of Bethlehem	59-60
4-5	5-6 Cottonwool Snowman	30	7+		Peg Santa Claus	61
5-6	Christmas Stocking Collage	31	7+		Christmas Carol Collage	62
5-6	Fingerprint Robins	32	7+		Christmas Front Door	63
5-6	Penguin Collage	33	7+		Winter Landscape in Pastel	64
5-6	6-7 Father Christmas Head	34	7+		Winter Trees	65-66
5-6	6-7 Wax Crayon Snowman	35	7+		Christmas Snow Globe	67
5-6	6-7 Snowman Collage	36	7+		Christmas Jumper	68
5-6	6-7 Christmas Wreath	37			Design Templates	69-75

Recommended Minimum Age:



Introduction

There is often very little time to get your Christmas displays up and Christmas Cards made at the end of the Autumn Term. Quick but effective ideas are always welcomed especially for experienced teachers and leaders who would like to come up with something different each year!

All the ideas in this book have been based on artwork sent to Cauliflower Cards from schools all over the UK. 'Christmas Art Ideas' will inspire you to embark on fun art activities using materials and art techniques familiar to the Primary School setting.



Cauliflower Cards Christmas Card Project

Tips to get the best Artwork Results!

All the artwork in this book produces great results, please take a look at our online gallery for more inspiration for your christmas art ideas.

OUR ARTWORK GUIDELINES

GOOD RESULTS	DO NOT USE
<ul style="list-style-type: none">✓ Pastels (chalk or oil)✓ Paints (all techniques and media)✓ Collage (including paper and fabric) - ensure these are stuck well)✓ Felt Tips✓ Line drawings in ink✓ Inks✓ Printing✓ Charcoal✓ Glitter	<ul style="list-style-type: none">× Same coloured media or material stuck on the same coloured background× Metallic pens & Paint× Photos printed on glossy paper× Lightly pressed colour pencils or pencil× Reflective or shiny papers or materials× Sellotape & transparent film

tips

Your design must be A4 or A5 and can be landscape or portrait

- ✓ Bold, bright colours work best!
- ✓ Fill your design with colour!
- ✓ Shiny materials will show reflections try and find matt alternatives!
- ✓ Keep important details and writing 1cm away from the edge so that it is not cut off in our production process!
- ✓ If you hand draw a border make sure it is neat as this will appear on your design! (why not use one of our downloadable templates)
- ✓ Anything hanging off the edge of your A4 or A5 design will not appear on your card.
- ✓ Keep your artwork as neat as possible - Creases and blobs of glue will show up when we print your design!

Santa's Belt

INTRODUCTION

A simple distinctive design, simple elements that can be arranged on a portrait A4 page.

RESOURCES & EQUIPMENT

Red A4 background paper
Black card or material for belt
White felt or material
Buttons
Gold card/paper
PVA glue



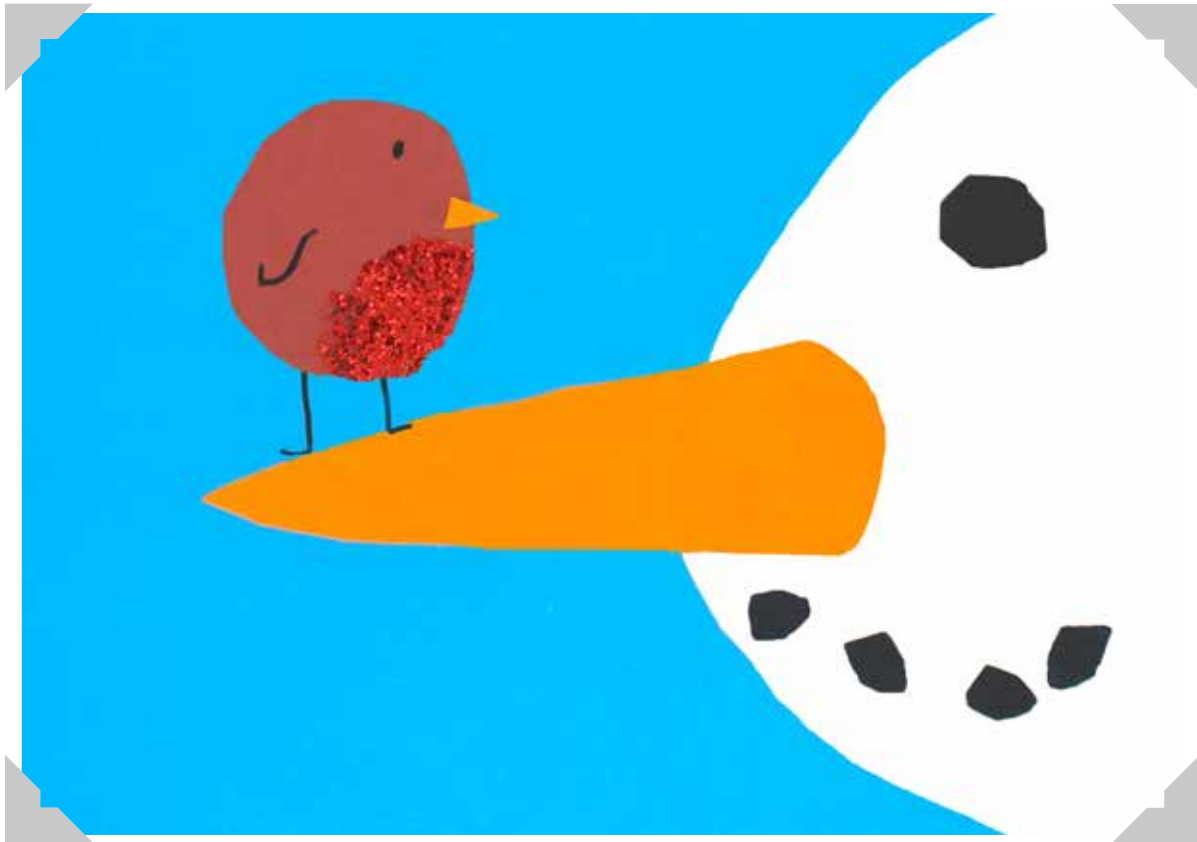
METHOD

- ❄️ Start with the plain red A4 card. Draw faintly in pencil centre lines horizontally and vertically to help position the main pieces (belt and white strip).
- ❄️ Measure and cut out the white felt into a long strip. Make sure it is nearly as long as the piece of card (length ways) and about as least 3mm wide.
- ❄️ Glue the white strip down starting from the bottom, along the centre of the card.
- ❄️ Then cut out a half circle shape which forms the bottom of the beard. Stick this down over the white strip.
- ❄️ To create a Merry Christmas label use a brown parcel label and write a Christmas message or greeting on the label. Position this and stick down to the left.
- ❄️ Next cut out a wide strip of black paper or material for the belt and glue this down in the centre of the page going horizontally.
- ❄️ Cut out a square of gold paper and cut a square hole in the centre for the buckle and stick this down in the center of the belt.
- ❄️ Glue down the black buttons on the white strip running down the middle of the design.

tip

You could use cottonwool for Santa's beard as an alternative.

Snowman face with Robin



INTRODUCTION

A really effective simple idea that uses minimal materials.

RESOURCES AND EQUIPMENT

Blue A4 background paper.

Range of coloured sugar papers

Black felt tip pen

Red glitter

PVA glue

METHOD

- ❄ Start with a plain bit of A4 blue card
- ❄ Draw a semicircle and cut out in white card for the snowman's head. You can use a small plate to draw around and cut in half if you struggle with circles.
- ❄ Glue the white face piece to the blue background card.
- ❄ Cut out a carrot nose from the orange paper. Place and glue in the centre of the face.
- ❄ Use black sugar paper to cut out the coals for the snowman's eye and mouth, the eye is usually bigger than the mouth pieces. Arrange and glue the eye and mouth in a smile onto the white face.
- ❄ Next create the robin; Cut out a circle from brown paper and a triangle beak from the orange paper. Place and glue the robin on the end of the snowman's nose, then stick the beak down.
- ❄ Glue and sprinkle red glitter on the tummy for the red breast. Finish by drawing in the legs wing and eye of the bird, so he is standing on the top of the nose.

tip

Use a small plate to draw around and cut in half if you struggle with circles.

Angels Collage

INTRODUCTION

Angels can be created using a range of different materials as you can see from our more ideas page. This design can quickly be created in one session using materials that are readily available.

RESOURCES & EQUIPMENT

A4 coloured sheets for the background
 Coloured paper or material (for dress)
 Doilies (for wings and arms)
 Pipe cleaners (for legs)
 Wool (for hair)
 Paper/material circles (for face)
 Buttons or stars
 Googly eyes
 PVA glue & Scissors



METHOD

- ❄️ For this design start by cutting a doily into quarters and sticking it in the top half of the A4 background paper to create two wings.
- ❄️ Cut out two small pieces of flesh coloured paper for hands. The arms are created by doilies cut into small pieces. Stick the hands down first and the arms over the top. Make sure you cut the doily arms long enough to go under the dress.
- ❄️ Cut a triangle from the coloured paper and glue this below the head to form the dress.
- ❄️ Cut a paper circle and stick in the centre of the doily and onto the dress. Make sure the head and the dress are touching! Then draw on a face and stick on googly eyes.
- ❄️ Arrange some wool for the hair and stick with PVA glue.
- ❄️ Finally cut two small lengths of pipe cleaner and curl the ends, glue these to the bottom to represent the legs.
- ❄️ Finish with buttons or stars to embellish the dress.
- ❄️ Leave the design to dry flat.

tip

Always use a small amount of PVA Glue and spread it out thinly using a spreader!

Arrange the pieces on the paper, before sticking to make sure that they are in the correct position.

tip

More Ideas



Tissue Paper Christmas Pudding

INTRODUCTION

Christmas Puddings are a traditional food for Christmas. It is interesting to discuss traditional Christmas foods and some schools may even include making a Christmas Pudding or Cake in their curriculum for the Autumn. Christmas Pudding artwork can also be used as part of a display accompanying written work on Traditional Christmas Food and Christmas Traditions along with Recipe Ideas.

RESOURCES & EQUIPMENT

Tissue paper (brown, black and white)

PVA glue

Glue spreaders

Green paper/material

Red paper/material

White paper to cut circle for the pudding

Colourful A4 background paper



METHOD

- ✿ Cut a circular shape from the white paper – this will form the base for the Christmas Pudding. Draw in faintly with a pencil the icing section of the pudding.
- ✿ Make tiny white circular balls with the white tissue paper and then glue these firmly to the icing section of the pudding.
- ✿ For the pudding section make tiny balls of brown to stick on and a few black balls to stick on randomly to represent raisins.
- ✿ Next cut out two small berry circles from the red paper and glue these together in the centre at the top of the puddings icing. Cut out two holly leaves from the the green paper and arrange and stick these at an angle to the berries.
- ✿ The pudding then needs to be firmly glued with PVA glue to the background paper and left to dry.

The closer the balls are stuck together the better the visual impact.

tip

tip

The smaller the balls the neater the final picture will look.

More Ideas



Wax Resist Stable Scene

INTRODUCTION

This is a simple, quick and effective art idea and every child's work will look slightly different. This is suitable for both younger and older children in the age range. The artwork can be completed in one session and looks effective displayed on its own mounted onto black paper with a nice deep blue backing paper.

RESOURCES & EQUIPMENT

Large sponge

Blue ready mix paint

Flat paint trays

White A4 background paper

White wax crayon

Glitter and metallic stars

PVA glue & glue spreader



METHOD

- ❄️ On the white background paper draw out the stable design and the Christmas star using the white wax crayon.
- ❄️ Squeeze the blue paint into the paint tray making sure the paint is fluid enough by adding a small amount of water, if needed, and then cover the large sponge with the blue paint.
- ❄️ Apply the blue paint by pressing the sponge several times onto the A4 background moving the sponge each time up the page to cover the white background paper.
- ❄️ Glue and sprinkle glitter to the roof of the stable and stick metallic stars to the background sky.

tip

Don't start gluing the stars or glitter until the blue background paint is mainly dry.



Winter Robin

INTRODUCTION

This is a fun artwork activity and quick and easy to complete in a short art session. Children can practise simple cutting skills and learn about gluing without making a mess.

RESOURCES & EQUIPMENT

Brown, red and yellow paper

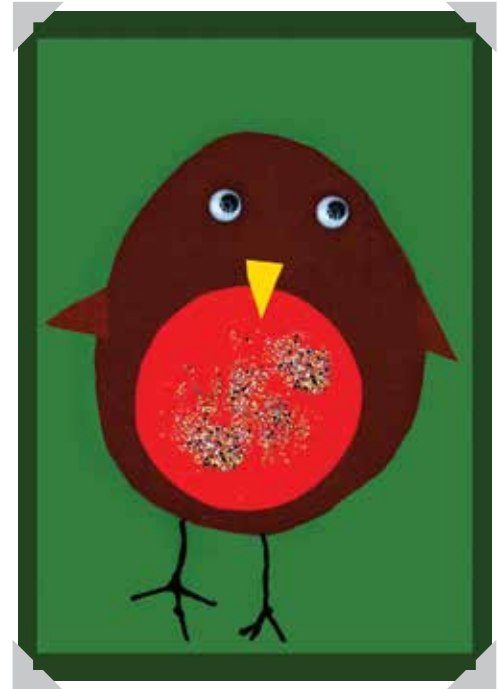
Coloured A4 background paper

Googly eyes

Red glitter

Black pen

Glue



METHOD

- ❄️ Cut an oval shape from the brown paper (this will be the body) and glue this in the centre of the sheet of paper.
- ❄️ Cut two small triangles from the scraps left over from your cutting out – glue these to the side of the body as wings.
- ❄️ Now cut a small red circle out and glue this centrally but low on the brown body, allowing space for a face.
- ❄️ Stick on the googly eyes and the beak.
- ❄️ Draw in some legs/feet.
- ❄️ To finish sprinkle the red glitter on the Robins' tummy.

tip

Sprinkle glitter with your fingers - this gives a better effect than tapping it from the pot.



Gold Star Collage

INTRODUCTION

Kids love glitter and shiny bits and these are readily available during the Christmas Season. Gold Collage stars look good on a deep blue backing paper.

RESOURCES AND EQUIPMENT

Gold/silver bits – stars, glitter, sequins, paper

Yellow paper

Blue or black sugar paper background paper

*Yellow & brown ready mix paint
(to mix together to make gold)*

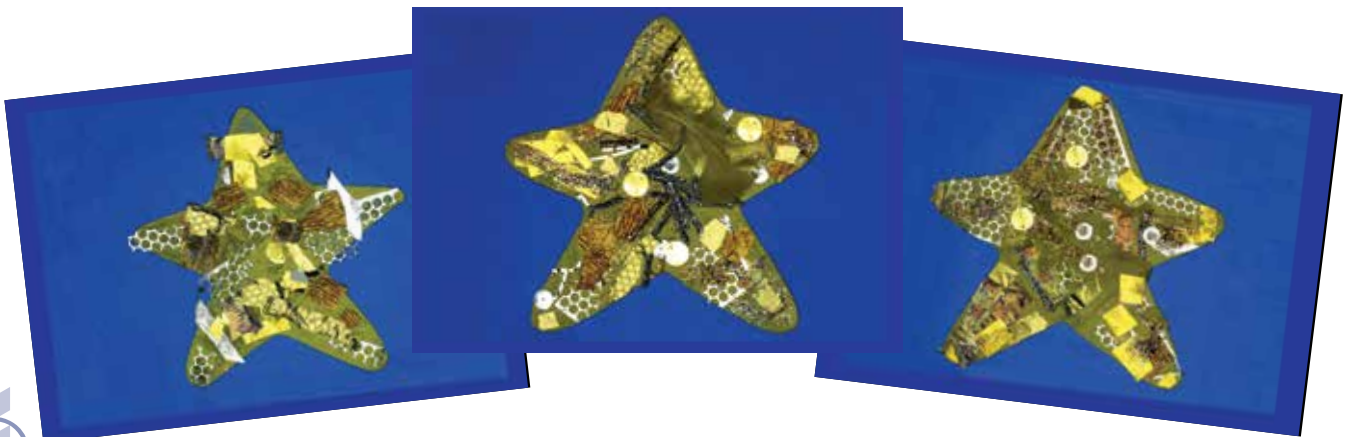


METHOD

- ❄️ From the yellow paper cut a five point star. This could be drawn out using a template for guidance.
- ❄️ The star can then be stuck onto the background paper.
- ❄️ Finally decorated the star covering it in a range of gold and silver bits allowing the gold background to show through as a matt contrast background.

tip

Stick on lots of small pieces as this will add interest and will fit better into the star shape!



Three Kings Collage



INTRODUCTION

This is a fun collage design which can be completed with a level of detail and difficulty suitable for the age range you are planning to work with. Materials for this design can be as simple as a range of coloured card or designs can be more elaborate using a range of collage bits and bobs including wool, buttons, fabrics etc. It is important to use a good glue, PVA is a strong flexible glue which works well with collage art where a wide range of material will be used.

RESOURCES AND EQUIPMENT

Range of fabrics & buttons
Hessian (for background)
String or Wool (for hair)
Googly Eyes
Coloured sugar paper or card
PVA glue
Spreaders

METHOD

- ❄ Start with a plain bit of A4 card and stick the hessian down to the card.
- ❄ Cut out the circles from flesh coloured card.
- ❄ Cut the crowns from coloured sugar paper/card.
- ❄ Cut the triangles for the kings bodies out of the different fabrics.
- ❄ Stick down the fabric faces and then the strings of wool for the hair three strands each side of the face. Then stick on the crowns.
- ❄ Then finish with googly eyes buttons and any other features and accessories to make the characters different.

tip

Use a good PVA glue it is strong and flexible - or the bits will fall off!

Santa Legs

INTRODUCTION

A very popular design - santa disappearing down the chimney!
This is a bold design easy to complete!

RESOURCES AND EQUIPMENT

A sheet of blue paper for the background
A range of coloured paper (browns, black, red and white)
Silver Glitter
Snowflakes
Scissors
Glue

tip

Arrange your paper pieces to see how it looks before you stick it down.



METHOD

- ❄️ First cut a strip of white paper to represent the snowy roof top - this will need to be glued across the bottom of the A4 blue paper.
- ❄️ From brown coloured paper cut out a square shape this will be a chimney - glue this centrally on the white snowy roof.
- ❄️ With a darker brown or orange paper cut out small rectangles to represent bricks - stick these in a brick pattern across the brown square chimney.
- ❄️ Cut a white snowy top for the chimney - this could have a wavy edge to help create a snow feel.
- ❄️ Next create Santa's leg and boots with the red and black coloured paper - assemble these and glue together with the boot stuck behind the red legs.
- ❄️ These need to be arranged and stuck down as if they are sticking out of the chimney.
- ❄️ Finally to decorate the picture use glitter on the chimney edge snow so that it sparkles and stick on a random pattern of snow flakes over the picture.



Owl on a Branch

INTRODUCTION

There are so many materials that can be used to create these cute owls: wrapping paper, fabric or even plain paper... The scene can be represented in different ways as well: snowy, sunshine or a night scene! This sleepy owl is a simple design which can be completed quickly in one art session.

RESOURCES AND EQUIPMENT

2x contrasting patterned wrapping paper
A range of coloured paper
Blue background A4 paper
Printed Z letters
Black felt pen

tip

Make sure your owl sits in the centre of your page.

METHOD

- ❄️ Start this design by cutting a tree and horizontal branch shape in brown paper, glue this onto the blue background paper.
- ❄️ Cut out an owl body shape in one of the wrapping paper design and the wings and crescent of the owls head in the second paper.
- ❄️ Using yellow paper cut out a diamond shape for the owls beak and two yellow feet.
- ❄️ Using a plain contrasting colour cut out 2 circle shapes for the owls eyes.
- ❄️ Assemble the owl loosely on the background paper.
- ❄️ Cut out a circle in yellow and fold this into four. Once this is folded cut triangles out of the curved edge. When this is unfolded this will be used to represent the sun.
- ❄️ Once all the parts have been prepared and laid out carefully glue the owl and sun into place so that the owl is sitting on to the branch.
- ❄️ Stick the 'z' letters into place.
- ❄️ Finally draw in the owl face details with the black felt pen.



Handprint Christmas Trees



INTRODUCTION

A messy art idea suitable for younger children! Handprinted Christmas Trees produce bright and colourful pictures for a Christmas art display and can be completed in a short afternoons artwork session.

RESOURCES AND EQUIPMENT

Green paint
Felt precut shapes
Glitter and metallic stars
Sponge
PVA glue
Spreaders

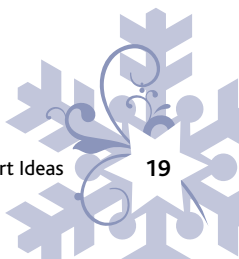
METHOD

- ❄️ The handprinting is the best place to start this artwork. Using the sponge and the green paint cover the hands with paint and place them firmly on the paper to create a crisp print.
- ❄️ Next using precut shapes glue on trunks, pots and stars.
- ❄️ Finally, add interest to the background by putting small dots of glue over the background paper and sprinkling glitter and stars.

tip

Make sure the paint is nice and thick so that you get a nice bold coloured handprint.

More Ideas



Handprinted Reindeer

INTRODUCTION

This is a little bit messy but great fun. Bright bold pictures can be achieved quickly and the children love to see the finished results!

RESOURCES AND EQUIPMENT

Printing Inks or ready mix paint

Sponges

Paper (for blotting)

Paper (for printing onto)

Flat paint trays or plates for paint/ink

Soap and paper towels



METHOD

- ❄️ This is definitely an activity for aprons and newspaper. I would suggest that preparing the working area with a clear path to the sink is essential for a quick clean up.
- ❄️ Choose the colours you will need and put a small amount in your trays.
- ❄️ Use the sponges to coat the childrens hands.
- ❄️ Start by printing the head: for this the children should hold their thumb tight in and fingers together.
- ❄️ Next coat the child's hand with a second colour and print the antlers with fingers wide apart.
- ❄️ It is then best to let the designs dry.
- ❄️ Finish off the designs with facial details when the printing paint/ ink has dried.
- ❄️ Details can be painted on or cut out of card and stuck on.

Blotting the hand first will produce a more textured print.

tip

tip

Don't use very wet paint!

More Ideas



Handprint Robin Redbreast



INTRODUCTION

This artwork idea is suitable for very young children where the handprinting is supervised and the shapes are pre cut for the children to assemble. Older children can do the cutting for themselves and can add greater detail. For example the Robin could be sat on a branch.

RESOURCES AND EQUIPMENT

Pre-cut paper shapes:

Brown circles (for the body)

Red eye shape (for the redbreast)

Yellow triangle (for the beak)

White small circles (for the outer eyes)

Small black circles (for the inner eyes)

PVA glue

Brown paint

Large sponge

A4 white paper (for the background)

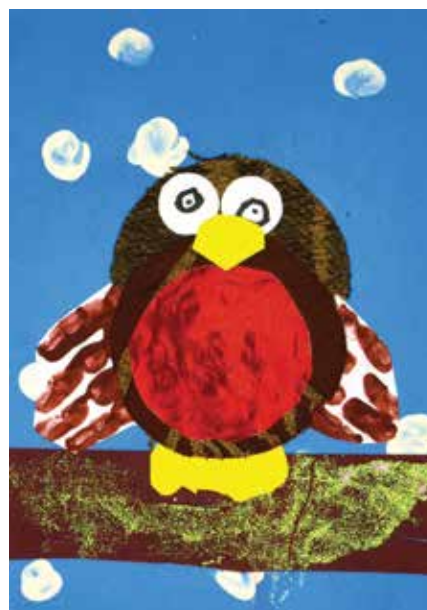
METHOD

- ❄️ Using the brown circle to work out the best location for the start of the handprints, mark a cross on the white paper where each handprint should start.
- ❄️ Coat the hands in brown paint using the large sponge and print the hands firmly on the white paper with the bottom of each hand matching up with crosses.
- ❄️ Let the handprints dry.
- ❄️ When the paint has dried, glue the large brown circle into place and assemble the redbreast beak and eyes to decide the best position, and then glue down firmly into place with PVA glue.

tip

Never use too much glue - spread the glue out thinly and make sure everything is covered.

More Ideas



Simple Collage Christmas Tree

INTRODUCTION

This is one for the younger children where the pieces are precut and just need to be assembled into place and stuck down. Activities like this although not 'artistic', help with development in following instructions and visual concepts. It is useful to discuss with the children 'How can these pieces be arranged to make a Christmas Tree?' and to allow children to arrange the pieces without gluing so that you can discuss what looks best.

RESOURCES AND EQUIPMENT

Precut green paper triangles

Gummed shapes (for tree decorations)

Glue stick

A4 coloured background paper.

Brown paper rectangles for trunks

Metallic stars

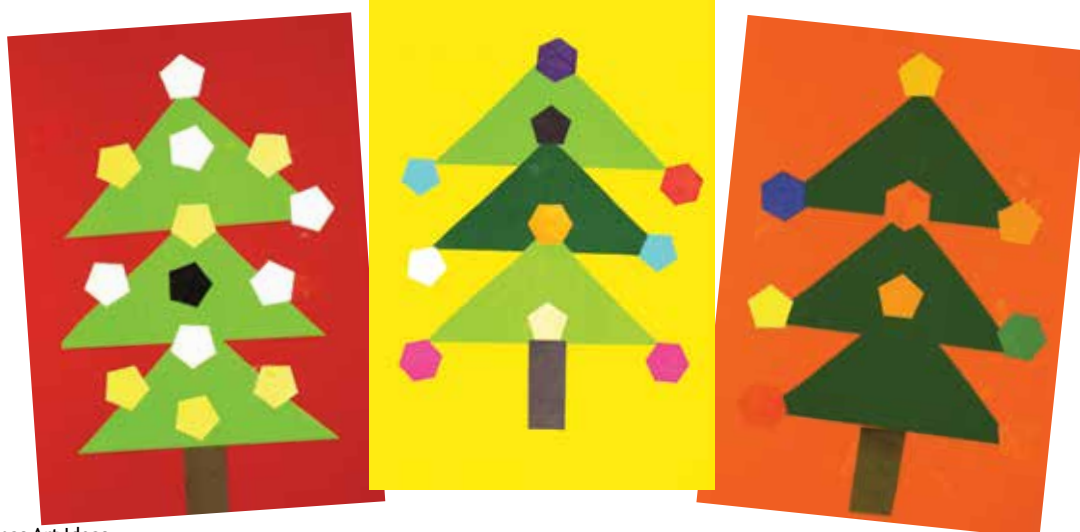


METHOD

- ❄️ Arrange the three triangles to create a Christmas Tree shape and glue down using glue Stick.
- ❄️ Glue on the trunk.
- ❄️ Decorate the tree with gummed shapes.
- ❄️ Finally stick a metallic star to the top of the tree.

tip

Arrange the pieces before gluing!



Handprint Santa

INTRODUCTION

Kids always love handprinting. This artwork idea is great fun for producing a very quick Santa Claus if you need to get your cards completed quickly.

RESOURCES AND EQUIPMENT

Coloured A4 sugar paper sheets
(for the background)

White ready mixed paint

Sponges to apply paint to the hands

Red paper (for the hat)

Red paint (for the nose)



METHOD

- ❄️ The starting point for this art activity is to make the handprint. To do this coat the hand with white paint using the sponge. Make sure the paint isn't too watery and there isn't too much paint on the hand which could cause the print to splodge. Once the hand is painted carefully place it on to the background paper and press without moving the hand to create a crisp print.
- ❄️ Whilst the print is drying off, cut out a Santa's hat from the red paper and glue it on just above the handprint. Leave enough space between the handprint and the hat to print a line of white finger prints along the bottom edge of the hat to represent fur. Then make one finger print at the end of the hat for the bobble.
- ❄️ Next, finger print a red nose and two white circles for eyes and then mix up some pink paint to use for finger printing rosy cheeks.
- ❄️ When all the paint is dry, using a baby finger print black dots in each of Santa's eyes and mouth.

tip

You could use card or googly eyes as an alternative to printing the face features.

Printed Robin

INTRODUCTION

Printing always provides exciting results and with a collection of materials that could be used for creating different sized printed circles, Robin Prints are fun and easy to produce!

RESOURCES AND EQUIPMENT

Range of materials (eg sponges) for printing circles.

Red, brown, white and black ready mixed paint

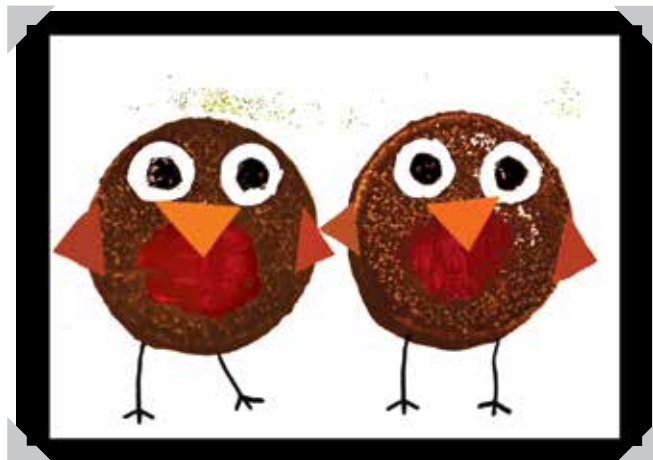
Brown and orange paper for beaks and wings

Black felt tip

Glue

Glitter

White paper (for background)



tip

Always looks best if you put a lot of paint on your sponge

METHOD

❄️ The starting point for this picture is the circle print for the Robin's body. Choose a large circular object suitable for printing, dip in brown paint to create robins bodies making sure that you can fit the number of Robins that you would like to print onto the background paper.

❄️ Using a smaller circle and red paint, print a red circle in the middle of each Robin's body.

❄️ When the brown and red paints are dry, print two small white circles for eyes.

❄️ Then cut one orange triangle for the beak and two brown triangles for wings. Glue these on.

❄️ Next print two smaller black circles inside the white circles to complete the eyes.

❄️ Finally using the black felt pen, draw in the legs and glue and sprinkle glitter to decorate the background.

tip

Printing colours on top of one another always looks best if you let the paint dry in between the prints.



Shepherd Collage

INTRODUCTION

This is a really nice piece of art to accompany work on the Christmas story told from the shepherds point of view. The designs can be individualised by use of different materials and varying the number of shepherds/sheep.

RESOURCES & EQUIPMENT

Range of checked materials
 Brown hessian
 Green and yellow tissue paper
 Gold stars
 Black sugar paper cut into A4 (for backgrounds)
 Corrugated coloured card
 A range of skin coloured paper
 Felt tips
 Cottonwool
 PVA glue
 Spreaders



METHOD

- ❄️ First cut a piece of checked fabric into a finger shape to represent the body of the shepherd. Make sure this will fit nicely on the black background A4 sheet.
- ❄️ From the same fabric cut out a small rectangle to represent an arm.
- ❄️ These can then be glued to the background sheet with the body placed slightly to left, leaving room for the arm piece to be stuck stretched outwards to hold the crook.
- ❄️ Next a circular shape needs to be cut from the skin coloured paper to represent the face. Onto this draw the face with felt tips and include a beard. When this has been completed glue this onto the shepherds body in the centre near the top.
- ❄️ Cut out two bands, one from corrugated card and one from hessian. Stick one of these across the top of the head and one part way down the body as a waist band.
- ❄️ Cut out a crook from the corrugated card and stick this to the outstretched arm. Then cut a small oval of skin coloured paper to represent a hand – stick this so that it is overlapping the crook.
- ❄️ Stick the green tissue paper along the bottom of the artwork to form the grass. This can either be done as a strip or as overlapping triangles to represent grass.
- ❄️ Small balls of cotton wool can be stuck on to create sheep. Then ears and eyes can be added by gluing on black paper cut into circles for eyes and triangles for ears.
- ❄️ Finally to finish the piece, gold stars and a yellow tissue paper moon can be stuck to the background to decorate the nights sky.

tip

Make a glue blob on your paper and stick the cottonwool to the glue or your spreader will stick to it!

Christmas Tree Scene

INTRODUCTION

This idea is a very simple design suitable for most children. The Christmas trees can be simplified further into triangles to make it even easier to create. Pupils can be taught to clean and dry their brushes between the two colours so they don't spoil them and also the importance of leaving paint to dry before any glued items can be added.

RESOURCES & EQUIPMENT

Glitter/snowflakes/stars

A4 white sheets for the background

Green paper

Brown felt or card

Blue and white ready mix paint



METHOD

- ❄️ The starting point for this artwork is to paint the background onto white paper/card. Using large brushes paint the top two thirds of the page blue and the bottom section white (sponges could be used instead). This needs to be left to dry.
- ❄️ The next step is to cut out Christmas tree shapes from the green paper – one big one and two small ones. These need to be glued to the dry painted background.

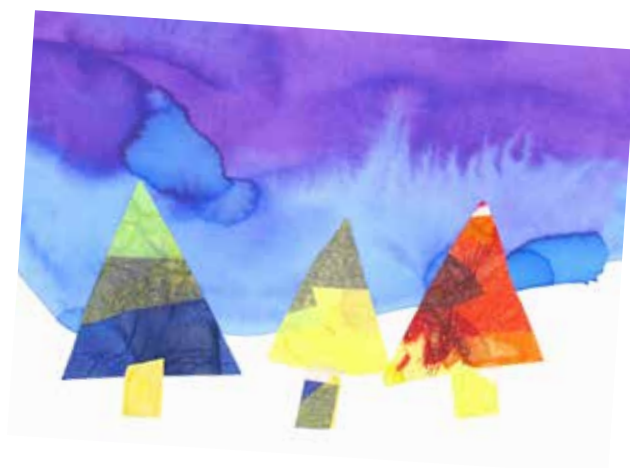
- ❄️ Brown trunks need to be cut and glued to the base of the trees.
- ❄️ Decoration of the main tree and snowflakes and glitter can now be glued on to the artwork to finish off.

tip

Always use a small amount of PVA Glue and spread it out thinly.



More Ideas



Christmas Candles

INTRODUCTION

This is a very simple and quick design for younger children which can be used for practising cutting and gluing skills. If you take a look at our 'More ideas' page this will inspire some more elaborate ideas that you may like to try...

RESOURCES & EQUIPMENT

Bright coloured papers for candles
A4 black sheet for the background
Yellow paper for flames
Metallic stars
Scissors
Glue



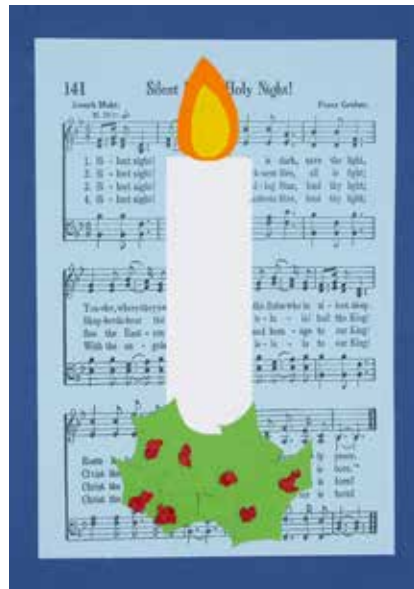
METHOD

- ❄️ Start first by giving out the A4 black background sheet.
- ❄️ Provide a selection of coloured paper which can be cut into candle shapes and arranged on the paper. Different lengths of candles provides interest, make sure that the length of the candles allow for a flame to be stuck above them!
- ❄️ Glue the candles onto the black background arranged in a group and slightly staggered at the bottom.
- ❄️ Cut out flame shapes from the yellow paper and glue these to the top of the candles.
- ❄️ Decorate with metallic stars.

tip

Arrange your materials onto the background sheet before you glue them just to check they fit!

More Ideas



Cottonwool Snowman

INTRODUCTION:

Children always love to make snowmen and this artwork can be personalised by each child to create individual snowmen characters. Alternative backgrounds could also be used for example - fabric or wrapping paper.

RESOURCES & EQUIPMENT

Blue tissue paper

A4 sugar paper (grey would be suitable)

Metallic stars & Snowflakes

Brown hessian or felt

Black and orange felt

Buttons & Bobbles

Cottonwool

Scissors/glue



METHOD

- ❄️ Preparation of the background will be the starting point in creating this design. First, the blue tissue paper needs to be ripped up and ready to glue onto the sugar paper background. Using PVA glue, stick the pieces to the background paper overlapping them to create texture and depth in colour. This will then need to be left to dry.
- ❄️ Once the background is dry the cottonwool can be arranged as two circles to represent a head and a body and then stuck down. The best way to stick cottonwool is to use a spreader and paste the glue directly onto the background and then to stick the cottonwool onto the glue.

- ❄️ Buttons, black felt circles or googly eyes can be added and the nose created using orange felt cut into a small triangle shape (to represent a carrot).
- ❄️ The hat and mouth should then be cut from the fabric/felt and stuck on.
- ❄️ The background can then be decorated with glitter or metallic stars.

tip

This should take about 2 lessons.



Christmas Stocking Collage

INTRODUCTION

Children love to think about what they would like to receive in their Christmas Stocking and a wide range of discussion points can be raised, including the traditions of Christmas Eve in different households.

RESOURCES AND EQUIPMENT

Coloured paper or Christmas wrapping paper (non shiny for main stocking)

Cottonwool

Glitter and decorative bits

A4 coloured background paper

Glue and spreaders

Scissors

String



METHOD

- ❄ It is best to start this artwork idea by cutting out the stocking shape from the coloured paper, or wrapping paper. Make sure that the stocking will fit on to the A4 background! Glue this with the PVA glue in the centre of the background paper, allowing space for presents to be stuck to the top of the stocking.
- ❄ Cut a range of present shapes, adding ribbons to decorate. Bend Pipe cleaners to create candy canes. Glue these to the top of the stocking.
- ❄ Next, stick a strip of cottonwool to the top of the stocking covering the join between the presents and the top edge of the stocking.
- ❄ Finally, decorate the stocking with glitter and decorative bits.



Fingerprint Robins



INTRODUCTION

This is a fun little finger printing design which can be adapted to involve more or less detail, depending on the age of the child. The background will need to be created before the printing begins.

RESOURCES AND EQUIPMENT

Cream background paper

Silver stars

Brown parcel paper

Mid blue ready mix paint

Brown and red ready mix paint

Brushes

PVA glue

Black felt tips

Orange sugar paper (for beaks)

tip

Always reapply new paint to your finger after each print to get a nice bold fingerprint.

METHOD

- ❄️ Start by dividing the background paper in half and painting the top half blue for the sky.
- ❄️ Draw and cut out two tree shapes making sure that both have a straight edge along one side, as they will be glued to the background paper butted up to the edge.
- ❄️ The next step will be to create the fingerprint robins. To do this first paint the top section of the index finger with brown paint and press this firmly to create an oval shape which will be the robin's body.
- ❄️ To create the red breast, wash the finger and dry thoroughly and then apply red paint to the tip of the finger and press this onto the brown body to make a small circular shape.
- ❄️ It is best to do all the bodies first then all the red breasts after so as to limit the need to keep washing hands! The red will stand out better if the brown paint is dry.
- ❄️ When the robins are dry add details: legs, feet and eyes with a black felt tip, then cut out from yellow paper, triangular beaks and glue them to each robin.
- ❄️ To finish the picture, decorate the sky with a few white snowflakes.

Penguin Collage

INTRODUCTION

Let the kids have fun creating collage Penguin characters! Penguins have been a very popular theme since the eve of Club Penguin. Being a creature that lives in a snowy climate, a wintery scene in the background works really well. Scrap fabrics are great for clothing along with cottonwool and coloured felts to create interesting layers.

RESOURCES & EQUIPMENT

Felt & Scrap Fabrics

A4 blue sheets for the background

Cottonwool or pompoms

Glitter/stars/snowflakes etc

Scissors

PVA glue



METHOD

- ❄️ The first task will be to draw an outline of a penguin shape onto paper and then trace around this onto black felt using chalk.
- ❄️ This can then be cut out and stuck to the A4 sheet using PVA Glue.
- ❄️ A white circle of fabric should then be glued to the black penguin shape to define the tummy.
- ❄️ Felt or googly eyes need to be glued to the head area, along with a red or orange triangle of felt or card for the beak.
- ❄️ Clothes can be added to the penguin using the fabric scraps...hats and scarves work best.
- ❄️ The penguin can be stood on a snowy background using white paper or cotton wool.
- ❄️ The background sky can be decorated using stars or snowflakes.
- ❄️ **Variations:** A paper collage background of a snow filled landscape could be created before the penguin is added.

tip

Make sure everything is cut out and prepared before the children start gluing.



Father Christmas Head

INTRODUCTION

These are great fun as each Father Christmas created takes on a different expression and character!

RESOURCES & EQUIPMENT

Red papers and fabrics (for hat/mouth)

A4 black sheets for the background

Newspaper

White and red ready mix paint (to make pink)

White cottonwool or fluffy material (hair and fur)

Skin coloured paper or felt (for the nose)

Scissors/PVA glue



METHOD

- ❄ Start by cutting up shapes of newspaper and sticking them onto the black background to form a round shape - this will be Father Christmas's face. Make sure there is enough space left above the head to put a hat!
- ❄ Next cut out a red triangle from either paper or fabric to create a hat. Stick this on top of the newspaper circle.
- ❄ The basic shape of Father Christmas has now been created and the details now need to be added. First cut or rip 2x white circular shapes for the eyes and stick or draw a dot in the centre of them, glue them on to the head.
- ❄ Next cut or rip out a mouth shape from red material or paper and stick on.
- ❄ Then do likewise with a skin colour for the nose.
- ❄ Finally use white cotton wool or fluffy fabric to make Father Christmas' hair, beard, fur lining and bobble for his hat.

tip

Don't waste time cutting lots of bits up and then running out of time to stick them on!



Wax Crayon Snowman

INTRODUCTION

These hand drawn snowmen are really fun and look striking drawn onto the painted background paper. Mounting onto a blue plain background paper helps the design stand out.

RESOURCES AND EQUIPMENT

Pale blue A4 paper

Mid blue and white ready mixed paint

Paint brushes

Wax crayons



METHOD

- ❄️ Each picture will require two pieces of the pale blue A4 paper – one for the painted background and one for the wax crayon snowman.
- ❄️ Start with the painted background. First, paint the white cross styled snow flakes and then paint white dots randomly in the background.
- ❄️ Next using the mid blue paint, add to the top half of the paper a few more cross styled snow flakes and blue dots.
- ❄️ Also use the blue paint to draw in a shadowy line where the snowman will stand.
- ❄️ Now leave the background to dry.
- ❄️ Using a separate sheet draw out the snowman include shading and purple, blue, white colours for best effect. When the snowman drawing has been finished, cut around the shape of the snowman leaving about a 1cm border.
- ❄️ Finally when the painted background is dry, glue the snowman into place in the centre of the background design standing on the painted line at the bottom.



5 - 6

6 - 7

Snowman Collage

INTRODUCTION

This is a simple but effective method for creating fun snowman characters – no special materials are needed just scraps of coloured paper and scissors. This artwork idea can be created very quickly in just one session and is great for practising cutting skills.

RESOURCES & EQUIPMENT

Range of coloured paper

White paper

A4 coloured paper for the background sheet

Scissors

Glue

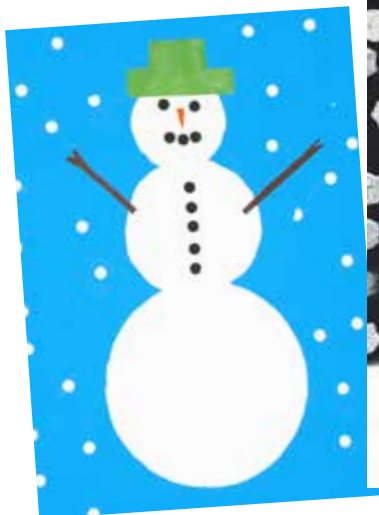


METHOD

- ❄ Start by cutting out the white circular shapes of the head and the body and stick these onto the chosen background colour to create the basic snowman.
- ❄ Use the colour paper to create facial features and clothing.
- ❄ Using white paper create a snowy floor on which the snowman can stand.
- ❄ To finish this design cut out white circular snowflakes and glue these falling from the sky in the background.

tip

Use glue stick so that your work does not get messy with glue.



Christmas Wreath

INTRODUCTION

A colourful design that can be created in a range of different ways! Careful cutting and sticking creates the best results. This design can be completed in one session.

RESOURCES AND EQUIPMENT

A collection of different green papers/ wrapping papers or fabrics
 A holly leaf template
 Colourful buttons
 Colourful circular paper shapes
 Ribbon
 Parcel paper cut into a rectangle slightly smaller than A4
 Colourful A4 sheet of paper to mount the design.
 Coloured paper stars
 Compass
 Scissors & Glue



METHOD

- ❄ Using a template draw and cut out 15 to 20 Holly leaves in a range of green papers and materials.
- ❄ Using the rectangle parcel paper as your background - draw a circle using a compass with about an 8cm diameter.
- ❄ Arrange the Holly leaves around this circle and stick down so that the circle no longer shows.
- ❄ To decorate the wreath glue the circular paper, buttons and paper stars in a pattern across the inner edge of the Holly leaves to cover over the over bottom edge of the over lapping leaves.
- ❄ To finish the wreath use the ribbon to either tie a bow or overlap two strips of ribbon and glue centrally at the bottom of the wreath.
- ❄ Mount the parcel paper design onto a bright piece of paper to create a colourful border around the design.

tip

Try to keep all important details 1cm away from the edge..



Crib Collage



INTRODUCTION

Crib Scene artwork always looks good as part of a display on the Christmas Story. This art idea does require a degree of cutting skills especially as felt can be quite difficult to cut through. The crib scene can be simplified to very basic shapes to represent Mary, Joseph and Jesus, or can include details such as the animals and gifts.

RESOURCES AND EQUIPMENT

Blue, brown, skin coloured, white & black felts

Black sugar paper for background

Gold paper

Cottonwool balls

Raffia string

Felt pens

Scissor and PVA glue

tip

To stick down the cottonwool put the glue on the paper and stick the cottonwool to the glue.

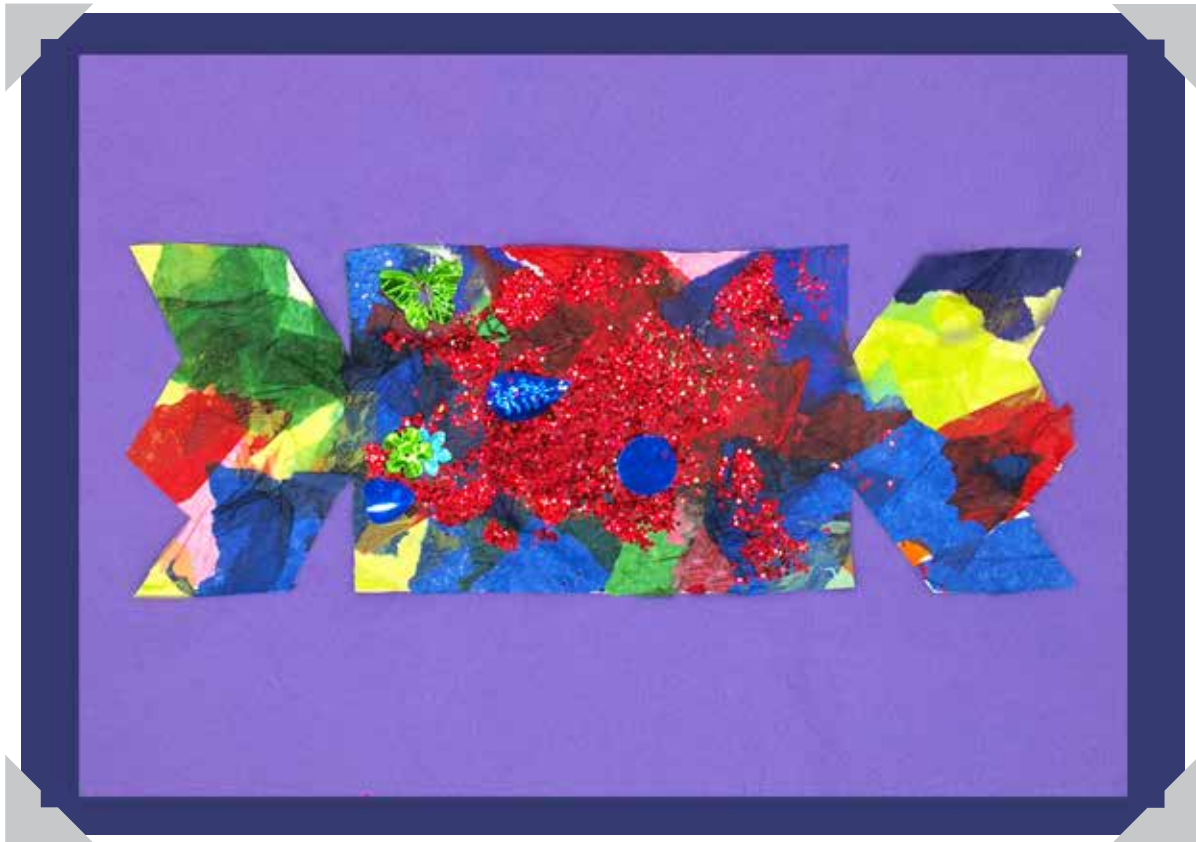
METHOD

- ❄ To create this piece of artwork start by cutting the frame work for the stable - 2x long strips and 2x short strips of felt. Assemble these on the black sugar paper in the centre and then glue down firmly with PVA glue.
- ❄ From the blue felt, cut out a suitable shape for Mary's body and arm. Next cut a round shape to represent Mary's head and a smaller shape for Mary's hands, using the skin coloured felt. The headdress can be cut from white or pale blue felt. Assemble Mary together, draw in her face using the felt pens, and then glue her down inside the stable.
- ❄ Cut out a bundle shape from the white felt to represent Jesus' wrapped body, and cut out a small skin coloured circle for his face. Draw on the features with a felt pen. Glue Jesus into place with Mary.
- ❄ Stick down some raffia string on the floor of the stable for straw and glue down the fabric for the manger out of five pieces of brown fabric.
- ❄ Sheep can be made by gluing cottonwool balls on to the background and using the black felt to create legs.
- ❄ The background can be decorated with the Christmas Star cut from gold paper and smaller squares or circles of gold to represent smaller stars.

More Ideas



Colourful Christmas Cracker



INTRODUCTION

Kids love Christmas Crackers! This artwork idea can easily be completed in one art session. The cracker is decorated by lots of colourful tissue paper and glitter which are readily available during the Christmas Season.

RESOURCES & EQUIPMENT

A4 Coloured sugar paper (background)
 A4 piece of white card (for cracker shape)
 Coloured tissue paper
 Glitter and decorations (paper, stars, snowflakes, sequins)
 PVA glue
 Scissors & black pen

METHOD

- ❄️ Draw a shape of a cracker onto white A4 paper - you can use one of our downloadable templates downloadable from our website (example in the back of this book).
- ❄️ Rip the colourful sugar paper into strips, layer and glue them onto the cracker.
- ❄️ After the tissue paper has dried cut the shape of the cracker out carefully.
- ❄️ Glue this to the centre of your coloured sugar paper background.
- ❄️ Use glitter and colourful metallic shapes to decorate the cracker - don't go overboard as metallic shapes will look pretty but a mass of them will cause a lot of reflection!

tip

Experiment arranging your pattern on your cracker before you glue it down!

Christmas Presents Collage

INTRODUCTION

This is a simple art idea suitable for younger children. As part of a display, present pictures like this one could accompany a piece of writing about what each child would like for Christmas, or a description of a present they would like the reader to guess!

RESOURCES & EQUIPMENT

Metallic shapes/glitter

A4 coloured sheets for the background

Coloured paper

Scissors

Glue



METHOD

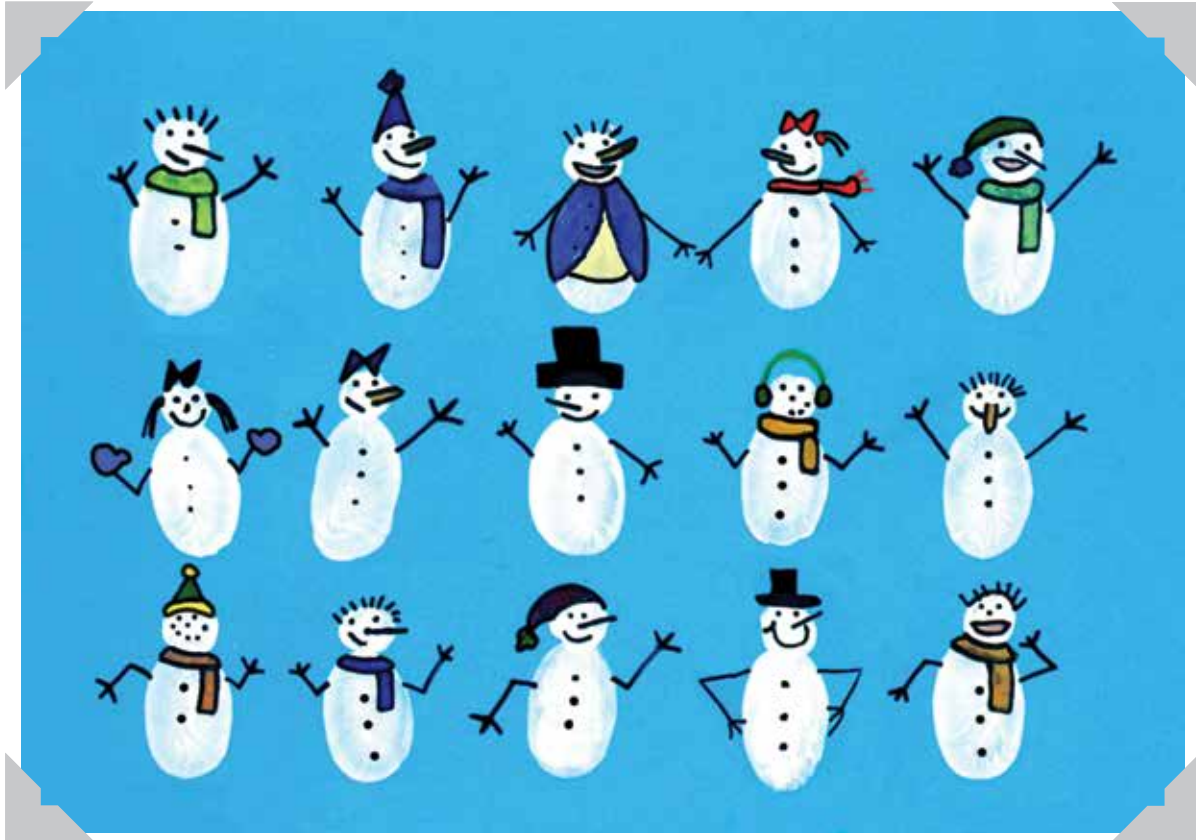
- ❄ To get started use the coloured paper to cut out a present shape.
- ❄ Using a contrasting colour cut thin strips to represent ribbon and a heart shape to represent the bow.
- ❄ Glue the present to the background sheet and the ribbon and bow onto the present.
- ❄ Decorate the present and the background with stars shapes or glitter.

tip

Always use a small amount of PVA Glue and spread it out thinly!



Fingerprint Snowmen



INTRODUCTION

These are great fun and kids love creating all the individual little snowmen and making them interesting and amusing!

RESOURCES AND EQUIPMENT

White paint

Sponge

Felt tip pens

A4 coloured background paper

METHOD

- ❄️ Aim to make three lines of snowmen with 5 on each line. Dip the sponge into the white paint and then press on to the index finger to cover the top half of the finger with paint. First make a print with the tip of the finger (for the head) and then a full fingerprint for the body.
- ❄️ When all the snowmen have been printed it is important to completely let the paint dry.
- ❄️ To finish off add arms, faces and clothes to each snowman using the felt tip pens.

tip

Let the paint completely dry before adding the felt pen details or the pen will run!

Make sure your fingerprints are 1cm away from the edge so not to lose any detail.

tip

Christmas Tree Collage

INTRODUCTION

Mixed Media involves using various methods of colour application and can include collage as well. This design for a collage can introduce the children to the idea and term of creating a *background*. The main focus 'The Christmas Tree' is then created on top of this to achieve a *foreground*.

RESOURCES & EQUIPMENT

Bright papers

A4 white sheets for the background

Green tissue paper various shade

Wax crayon

Blue ready mix paint

Black paper for window frame

Scissors

Glue



METHOD

- ❄ The starting point for this artwork is to create the background. The first step is to draw a square in the top 2/3 rds of the A4 sheet to represent the window. This then needs to be painted blue and left to dry.
- ❄ Next prepare the materials to create the Christmas tree: rip up pieces of different shades of green tissue paper overlap them and stick them with PVA glue onto a white rectangle of paper. This needs to be left to dry.
- ❄ Once the paint is dry, the area around the blue square can be coloured using wax crayon then white snow flakes can be dotted over the blue painted area. The edge of the blue square can be tidied up using black strips of paper glued around the edges to create a window effect.
- ❄ When the tissue paper rectangle is dry, draw the shape of a Christmas tree onto it and cut out.
- ❄ The final assembly of the picture involves sticking the Christmas tree in front of the window using PVA glue and then decorating the tree with glitter and paper baubles. Cut out a rectangle for the pot, and presents can also be made to add around the base of the tree.

tip

Practise drawing out a Christmas tree shape and use this as a template.



Snowy Town

INTRODUCTION

This design will take a couple of sessions and is most suitable for six to seven year olds who have gained greater dexterity with the scissors! Before starting the artwork children could be shown images of snowy towns and given an opportunity to discuss what they can see in the images.

RESOURCES & EQUIPMENT

A4 background paper

Range of coloured paper

Metallic stars/sequins/glitter

Glue Stick

Scissors



METHOD

- ❄️ Cut out a range of building shapes and arrange these on your background sheet. These then need to be firmly stuck down to form the basis of the town.
- ❄️ Roofs should be cut from white paper with rounded edges to recreate a snowy effect then icicles, could be added.
- ❄️ Windows and doors can be cut and stuck on next.
- ❄️ Additional details, for example a town Christmas tree or lights, lamp posts and fences can be added at this point if there is time. Keep any important features away from the edge of the A4 sheet as the border may cover them when it is stuck on at the end.
- ❄️ Sequins/snowflakes can be stuck to the sky area to create a snow effect.
- ❄️ The final part of this design is the frame which is created by four strips of paper decorated by rectangles of a contrasting colour. The four strips need to be stuck firmly to the edge of the collage overlapping any previously stuck down features.



Silhouette Tree Scene

INTRODUCTION

This is a visually effective design which each child can individualise by adding hills and different number of trees. This design is more suited to Year 2 as cutting skills will be better developed to cope with the cutting out of the silhouettes.

RESOURCES & EQUIPMENT

Black sugar paper

Coloured tissue paper

PVA glue

Spreaders

White A4 background paper

Silver stars (various sizes)

Silver glitter



METHOD

- ❄️ Start this artwork by creating the sunset on the white background paper. To do this choose three suitable colours from the coloured tissue paper and rip up pieces of these papers ready for gluing.
- ❄️ Cover the whole of the A4 paper with curved bands of the chosen colours. Glue the tissue paper so that it overlaps to create a random textured effect.
- ❄️ Next use the black sugar paper to create a landscape background which covers the whole of the bottom section of the artwork. Onto this stick Christmas Trees and other landscape features.
- ❄️ Stick to the sky area one large Christmas Star and a few smaller metallic stars.
- ❄️ Finally add a sprinkle of glitter to the whole picture to represent glittering snow.



Fingerprint Christmas Paintings

INTRODUCTION

This type of artwork is an unusual but fun method of applying paint to a picture. You can either go for the messy method using your fingers, or the cleaner method using a small circular sponge stamp which can be easily purchased from Educational Supply Catalogues.

RESOURCES AND EQUIPMENT

Small sponge printing stamps (or use a finger)
Range of ready mixed paint
A4 coloured paper for the background
Pencils and rubbers



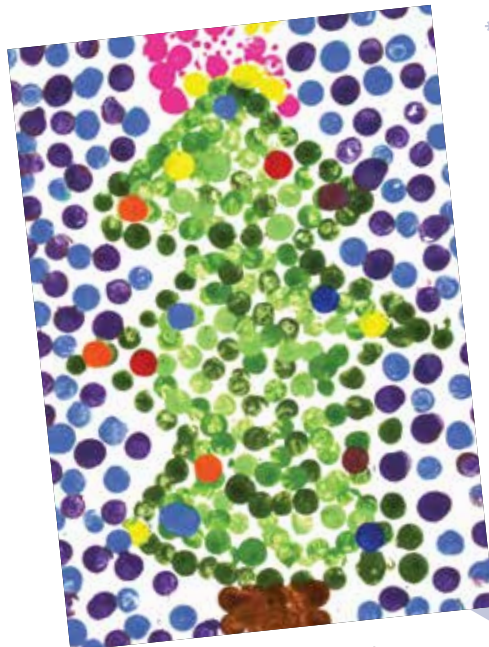
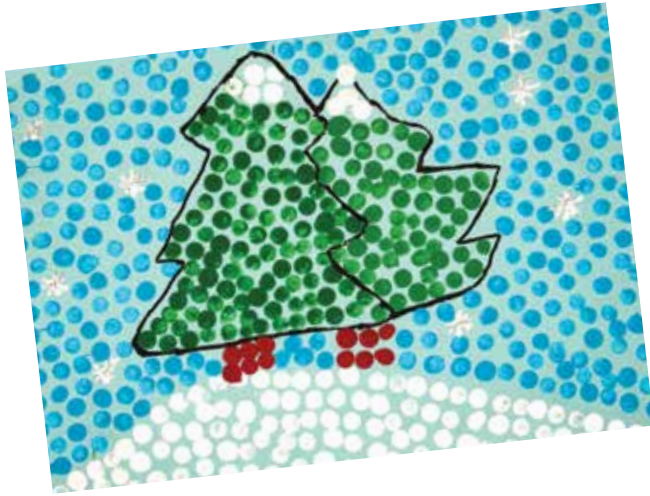
METHOD

- ❄️ Practise drawing a Christmas picture on some scrap paper. Make sure the design is simple and bold.
- ❄️ Then draw the Christmas picture using pencil onto the coloured paper. Make sure the pencil is drawn very lightly so that it will be easy to rub out at the end.
- ❄️ Decide on the colours for your picture. To keep the printed colours clean and bright it is best to complete the printing of one colour at a time, starting with the body, and then adding the details and background.
- ❄️ Wash printing stamps and hands regularly when changing colour. You never want the paint too wet, so dry hands and stampers carefully after washing.
- ❄️ When you have finished printing the circles, leave the picture to completely dry.
- ❄️ When it is dry the pencil lines can be gently rubbed out.

tip

To ensure the paint is not too wet or runny before you start, make the first print on to a bit of newspaper which you can use as blotting paper.

More Ideas



Penguin Family Collage



INTRODUCTION

It is always fun to create imaginative characters and in this artwork the Penguin Family can be individualised by creating interesting clothes from scraps of material. This artwork idea can also be used as a starting point for some simple story writing based on the family's adventures.

RESOURCES AND EQUIPMENT

Black, white and yellow coloured paper

A4 sugar paper for background

Range of fabric scraps

Glitter

Black felt pens

Glue and spreaders

METHOD

- ❄️ Using the white paper cut three finger shaped bodies each one slightly smaller than the last. Glue these in descending order across the A4 page.
- ❄️ From the black paper cut three sets of wing shapes. Glue these to the sides of the bodies and decorate with glitter.
- ❄️ For each of the penguins, draw in the eyes using the black felt tip and then cut a yellow triangle and stick it onto the face area as the beak.
- ❄️ Complete the penguins by adding hats/scarves made from the fabric scraps.
- ❄️ Decorate the background with glitter stars.

Gingerbread Men

INTRODUCTION

This artwork can form part of a topic on Christmas food and could include making or decorating gingerbread men along with gingerbread men stories.

RESOURCES AND EQUIPMENT

Red background A4 sugar paper
 Green sugar paper
 Brown paper (for the gingerbread man)
 A range of coloured paper
 Pipecleaners, bobbles and buttons
 Black felt/black sugar paper
 Goggly Eyes
 PVA glue
 Spreaders
 Scissors



METHOD

- ❄ Start with creating the background of this artwork. Using the green sugar paper, cut out Christmas Tree branches and stick these across the red A4 background paper.
- ❄ From one of the branches, stick a strip of coloured paper to represent the hanging loop for a decoration from the branch.
- ❄ Next cut out a gingerbread man shape from brown paper.
- ❄ Cut out two felt/paper boots and glue these to the gingerbread man's legs.
- ❄ Use the string, wool or pipecleaners to create a walking stick. Use the PVA glue to make the shape of the stick and then press the into the glue.
- ❄ Create a hat from paper or felt and attach to the top of the head.
- ❄ Finally, complete the gingerbread man by gluing on the face and clothing. You can decorate with stars, boobles and buttons.

tip

Use our resource in the back of this book to help create your gingerbread man.

Simple Cut Snowflakes

INTRODUCTION

Although a simple idea, older children usually achieve better results as they are more capable with the scissors. The design can either be kept simple with snowflakes cut and stuck to a plain background paper or interesting backgrounds can be created using paint or collage.

RESOURCES AND EQUIPMENT

Coloured A4 sheets

Tissue paper

White A4 sheets

Glue sticks

Scissors



METHOD

- ❄️ Snowflakes are created by folding the white sheets of paper in half at least twice and then using good scissors to cut out intricate shapes.
- ❄️ The centre of the snowflake will be where the two folded edges meet. Unfold the sheet to check - you could even mark the centre if you are not sure and then refold your sheet.
- ❄️ Nicks can be cut from the two folded edges that radiate from the central point. These create the interesting cut outs.
- ❄️ The shape of the snowflake is created by cutting a rounded shape into the two loose sides of your folded sheet.
- ❄️ It is a good idea to have plenty of paper to hand so that you can experiment at creating lots of different shapes and sizes for the picture.
- ❄️ To put the picture together select an odd number of snowflakes of different designs and sizes. This will give the picture interest.
- ❄️ Glue the snowflakes using a glue stick. Stick to plain coloured paper A4 sheet or try tissue paper strips or painted backgrounds.



Christmas Fireplace

INTRODUCTION

A fireplace at Christmas is a lovely focal point for decoration, presents and hanging the stockings. This collage design aims to recreate a warm fireplace with a Christmas theme. Looking at images of fireplaces would be a useful starting point, accompanied by a discussion on who has a fireplace and how is it decorated at this festive time of year.

RESOURCES AND EQUIPMENT

A range of coloured sugar paper

Range of tissue paper

Scissors

Glue sticks



METHOD

- ❄️ First choose a sheet of A4 paper to represent the background walls surrounding the fireplace. This will be the sheet on which the fireplace is assembled and glued down.
- ❄️ Next choose a suitable colour for the fireplace itself. Cut a rectangle from this smaller than the background sheet and glue this centrally to the background.
- ❄️ Using black sugar paper cut a shape for the inside of the fire place and stick this centrally onto the fireplace.
- ❄️ Using thin strips of black, outline the fire place to help it stand out.
- ❄️ To create the fire use a range of red/orange sugar paper cut into tongue shapes and stick them down overlapping to create the fire shape.
- ❄️ Use brown sugar paper cut into rectangular log shapes to stick in front of the fire to finish the fire off.
- ❄️ Finally to finish off your design add decorations, stockings and presents to give your picture a Christmas look.



Simple Bethlehem Collage

INTRODUCTION

Scenes of the birth place of Jesus are popular themes for Christmas art. A good starting point for a Bethlehem collage would be to look at images of the architecture found in this area of the world - these can easily be viewed using an image search on the internet for Bethlehem. Instantly recognisable shapes can be picked out in photos available online and these can form a bases for some lovely collage work.

RESOURCES AND EQUIPMENT

Blue A4 background sheets

White paper

Blue sugar paper for windows/doors

Brown sugar paper or parcel paper for roofs

Scissors

Glue sticks



METHOD

- ❄️ Start by identifying typical shapes of buildings found in this area of the world. Sketch these basic shapes out onto white paper and cut them out carefully.
- ❄️ Arrange the shapes on the blue background sheet. These should be an over lapping collection of buildings filling the bottom two thirds of the background paper.
- ❄️ Arrange the buildings starting from the background and working forward. Make sure your buildings are upright and that there are no gaps. Then glue these down firmly.
- ❄️ Use darker sugar papers to create doors, windows and building features including roof designs.
- ❄️ Finally create a large star for the sky.

tip

Place your buildings on your sheet as a trial before you start to glue them down.

Collage Snowflakes

INTRODUCTION

The intricate pattern of every individual snowflake makes a great theme for creative collage. Images of enlarged snowflakes can be used to generate discussion about symmetry and style.

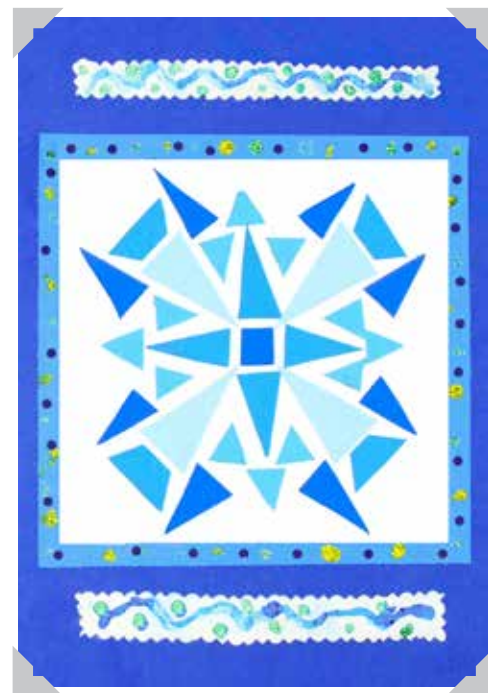
RESOURCES & EQUIPMENT

Glitter glues

A range of A4 coloured papers in blues

PVA Glue

Scissors / Pinking scissors



METHOD

- ❄ Start by choosing 3 coordinating sheets of coloured paper. Use one for the background and use the other two to cut two squares one, slightly smaller than the other.
- ❄ Glue the two squares one inside the other onto the centre of the larger A4 sheet.
- ❄ Cut a selection of different coloured isosceles triangles from the different shades of paper.
- ❄ Use either a cut circle or square as the centre and without sticking your pieces down play with your pieces to make a design you are happy with.
- ❄ You can then create additional shapes to fill out your snowflake design.
- ❄ When you are happy carefully stick these down starting with your centre shape which should be stuck in the centre of your square then working out from here.
- ❄ Finally cut out two strips of paper with pinking shears and decorate these with a glitter glue pattern. Glue these to the background paper above and below the central boxes.



Baubles and Branch Collage

INTRODUCTION

Baubles are a popular theme for Christmas Art. This idea is a simple collage with a bit of glitz which the children always enjoy! This artwork idea can be completed in an afternoon making it a very quick idea to fill a display board.

RESOURCES & EQUIPMENT

Glue Spreaders

PVA Glue and Pots

Variety of coloured paper

A4 Card or sugar paper for background

Glitter

Metallic stars and snowflakes

Coloured Tissue Paper



METHOD

- ❄️ Start with each pupil having an A4 sheet of coloured card or sugar paper. (Whenever glue is being used, thicker paper or card works best)
- ❄️ Pupils will then need to cut their baubles out carefully and glue them just below the branch leaving space to draw or stick on the hanging string.
- ❄️ Onto this sheet the pupils need to cut and glue the green sugar paper to form the branch shape of the tree.
- ❄️ The hanging string should then be drawn with gold pen or you could actually stick on gold string or ribbon and tie small bows for decoration.
- ❄️ Next pupils will need to draw the shapes of their baubles onto a sheet of paper.
- ❄️ Finally the background is decorated with metallic stars and white snowflakes
- ❄️ The pupils can then decorate their baubles using paint and/or strips of tissue paper.



The Three Kings Crown

INTRODUCTION

The Three Kings are often portrayed dressed in beautiful exotic clothing; this art idea focuses on creating decorative crowns based on popular depictions of these characters in the Christmas Story. A good starting point for this art idea would be to collect a range of images of the Three Kings and look at the shapes, style and colours of the crowns in other peoples work.

RESOURCES AND EQUIPMENT

A range of coloured sugar paper
Gold/ Silver/ Coloured metallic stars
A4 Black background paper
Glue sticks
Scissors



METHOD

- ❄️ Start this artwork by deciding on the shapes for the three crowns and sketch these lightly on three different colours of paper. Try and ensure that the shapes are symmetrical. Then cut these out carefully.
- ❄️ Next arrange the crown shapes in a line up the centre of your A4 black background paper. Then stick them down firmly using a glue stick.
- ❄️ To complete the decoration of the crowns use coloured papers to create inner shapes and patterns.
- ❄️ Finally stick a range of metallic stars in the background and on the crowns to decorate.

To create a perfect symmetrical crown you can fold your paper in half and draw half a design out from the fold then cut this out and unfold your design – it should be symmetrical!

tip



Stained Glass Windows

INTRODUCTION

Stained glass windows created out of layered tissue paper make fantastic, bright, bold displays. It is important when using this technique to keep the designs simple as these will be more effective. A good starting point would be to look at images of stained glass windows, paying particular attention to the way the designs divide up sections of the picture in to blocks of colour bounded by lead.

RESOURCES AND EQUIPMENT

A4 background sheets of paper

Black sugar paper for the 'lead' outlines

Multicoloured tissue paper for the glass

PVA Glue



METHOD

- ❄️ Fold an A4 sheet of black sugar paper in half and draw in a half the shape of the window using the fold as the central line. Inside the first drawn line draw a second line following the first but 2cm in from the first line and repeat this again with a 3rd line inside the second line and then again for a fourth line cut along all four lines. This will give you 3 frames. Use the largest and smallest for this design, these will be used as an outside window frame and an inside window frame with a gap between them.
- ❄️ Place the outside frame on your A4 sheet and lightly sketch the inside line of the shape so that you can see where the outside frame will be on your background sheet when it is stuck down later.
- ❄️ Now place your inside frame centrally inside of this. Mark the inside of this frame so you can see where this will be on the A4 sheet. Put your two frames safely to one side.
- ❄️ Using coloured tissue papers rip and glue small pieces in the area inside the inner frame using the line you have just drawn to guide you. Then glue on your two black frames.
- ❄️ Finally use the remaining of your black paper by folding it again in half and drawing the shape of a bell then draw an inner line following the shape of the bell 2cm from the first line. Cut both these out. When you unfold the paper you will have created a bell shape with a bell aperture. Glue this centrally over the tissue papered centre of the design.



Stylised Christmas Trees

INTRODUCTION

The silhouette of a stylised Christmas Tree decorated carefully with small details will produce a dramatic design. Discuss with the children the idea of symmetry and with this the typical shapes you would see decorating a tree.

RESOURCES AND EQUIPMENT

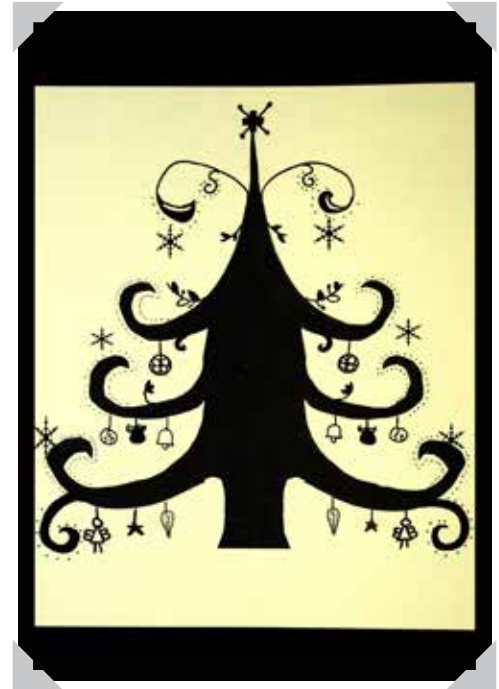
Pale yellow A4 sheets

Black sugar paper

Black fine liners

Glue sticks

Scissors

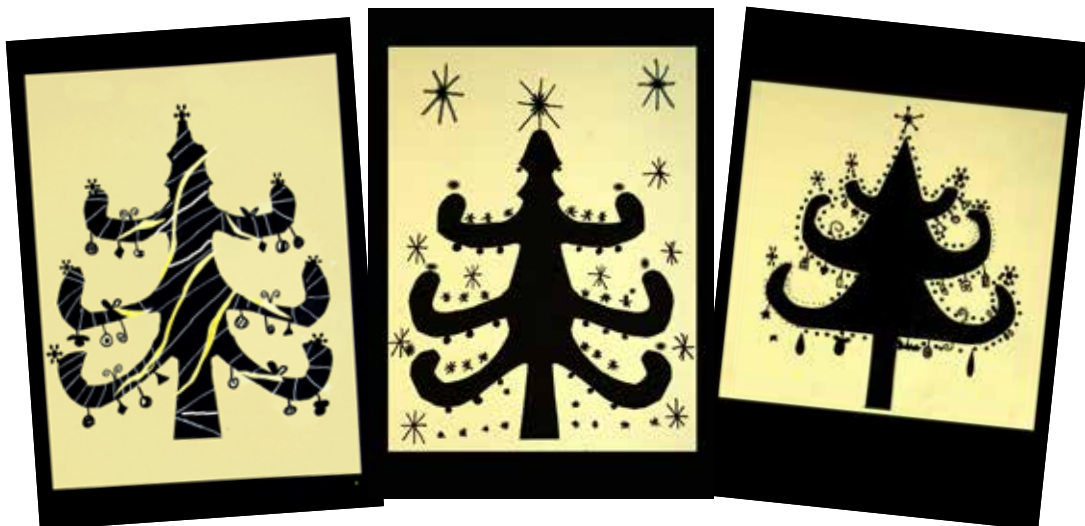


METHOD

- ❄️ Start by creating the symmetrical shape of the Christmas tree by folding an A4 sheet of black sugar paper in half and drawing half a Christmas tree against the folded edge. Cut this out carefully.
- ❄️ Next use the black fine liner to decorate the tree with small details - try and keep the decoration symmetrical as this will have the most impact.
- ❄️ Glue the tree centrally on to the yellow background paper.
- ❄️ Finally mount the yellow paper onto black card to mirror the darkness of the silhouette.

tip

Cutting your tree from a sheet of paper slightly smaller than the background will ensure it is the correct size.



Framed Collage of Bethlehem

INTRODUCTION

Bethlehem is a popular theme for a Christmas Card. This design is framed by a decorative shaped frame which is placed over the sugar paper collage creating a bright and colourful picture. Views of Bethlehem and the styles of the buildings can be found on the internet and displayed on the white board so that pupils create an authentic feel to their design, or they could create more stylised town scenes like this one based on their own ideas.

RESOURCES AND EQUIPMENT

Coloured paper for the frames

A variety of sugar paper colours

Gold Stars

Metallic Pens

Glue/scissors

Black A4 cut sugar paper



METHOD

- ❄ Each child will need an A4 sized sheet of sugar paper as a background.
- ❄ Pupils will need to cut out a range of building shapes (around 10 -14).
- ❄ Pupils should stick down their building shapes starting with the sky line at about $\frac{3}{4}$ of the way up the page and work their way down to the bottom of the page overlapping the buildings as they go.
- ❄ Windows and doors can then be added to provide detail and interest.
- ❄ In the sky stick one gold star and draw in with metallic pens smaller stars to decorate.
- ❄ Finally cut out a rectangle of coloured sugar paper to match the size of the picture, fold this in half and draw and cut out the shape for the frame. Open the paper out flat and stick the frame over the design to finish off.
- ❄ Trim down the edges of the picture with a guillotine to tidy up the outside edges of the picture.

tip

Use a glue stick this will be less messy.



More Ideas



Peg Santa Claus

INTRODUCTION

Making a Peg Santa Claus is a fun craft/art activity that could easily be completed in a couple of art sessions. The Santas' can be put together in a range of fun poses. Additional background details such as a sack, chimney, roof top could be added to the design for older children.

RESOURCES AND EQUIPMENT

Craft felt/Vivelle

Background sheet of A4 sugar paper

Cotton wool

Red pipe cleaners

Peg

Red ready mix paint

Black sugar paper

White paper

Black marker pen

PVA glue & glue stick



METHOD

- ❄️ The first task is to paint the peg red and leave it to dry.
- ❄️ To create the face cut out a circle of pink felt/Vivelle. Next cut two small circles from some white paper for the eyes. Stick them on and draw black dots in the centre.
- ❄️ Using red felt/Vivelle cut out a hat shape.
- ❄️ Using black sugar paper cut out Santa's gloves and boots.
- ❄️ When the peg has dried draw on buttons and a belt with the black marker pen. Then cut out a buckle from white paper and glue this on.
- ❄️ Now the Santa can be assembled by first gluing the peg to the background sheet using PVA glue.
- ❄️ Then glue the head just above the peg leaving a small gap to stick a beard.
- ❄️ Next glue on the hat.
- ❄️ Then cut to size the pipe cleaners forming the arms and legs, bend them into position before being glued on.
- ❄️ Stick the gloves and boots on the end of the pipe cleaners.
- ❄️ Finally, stick tufts of the white cotton wool onto Santa to form trims to the gloves and boots, Santa's beard and the bobble on his hat.



Christmas Carol Collage



INTRODUCTION

Very simple but great fun! With a wide range of Christmas carols to choose from there should be a song to suit everyone. This art idea is based on a background collage of musical notes and a silhouette representing the chosen carol. The title of the carol could either be displayed on the artwork, or stapled to the display board underneath the artwork with a flap so that the carol needs to be guessed first before checking. The displayed artwork could be titled - 'Which Christmas Carol?'

RESOURCES AND EQUIPMENT

White A4 background paper.

Photocopied music

Yellowy/Brown water colour paint

Large brush

Black sugar paper

White pencil

PVA glue

METHOD

- ❄️ First tear up strips of photocopied music paper so that there is enough to overlap and cover an A4 sheet.
- ❄️ Stick these down overlapping to fill the whole background paper.
- ❄️ Mix up some watery yellowy/brown paint then using a large brush wash this over the whole background to give an aged effect.
- ❄️ Whilst the background is drying, sketch onto black sugar paper a simple image to represent the Christmas Carol. Cut this out neatly.
- ❄️ When the background is dry, glue the silhouette onto it in the centre.
- ❄️ Use the white pencil to add some simple details.
- ❄️ Mount the design onto black paper to mirror the boldness of the black silhouette.

Christmas Front Door

INTRODUCTION

We love to decorate our homes at Christmas including our front doors! The Christmas Front Door idea can incorporate investigating different styles of front doors and collecting pictures and drawing sketches of the childrens front doors, as well as discussion on different methods of decorating a front door.

RESOURCES AND EQUIPMENT

A range of coloured paper

A4 Beige or grey background paper

Glue sticks

Scissors

Snowflakes shapes

Colour Pencils



METHOD

- ❄️ Start by painting a colourful brick pattern across your beige background paper - this can be drawn on lightly to start with and then carefully painted or can be painted freehand for a more rambling effect.
- ❄️ Next choose a colour for the door. Cut out a rectangle door shape and glue this in the centre of your brick background.
- ❄️ Use white/grey or brown shades of paper to create the shape of the windows. Glue these onto the door.
- ❄️ Use yellow or grey paper for the handle and other door furniture - more detail can be added to these with a sharp coloured pencil.
- ❄️ Add snow by using white paper to line the bottom of your picture overlapping the bottom of the door. Glue snowflakes falling randomly across your picture to complete the snowy look.
- ❄️ Finally design and add some Christmas decorations for example a Christmas wreath hung on the door - use scraps of coloured paper to create these.



Winter Landscape in Pastel

INTRODUCTION

Dramatic winter landscapes can easily be created when using greys and blacks as a pallet. For inspiration photographs can be taken or brought in of winter landscape scenes, or images can be found online.

RESOURCES AND EQUIPMENT

Black/Grey/brown pastels

Pastel paper



METHOD

- ❄️ First spend some time trying out different compositions in a sketch book, or on scrap paper. Keep the ideas simple and details to a minimum.
- ❄️ To begin the picture, draw in the main outlines with bold lines and then fill in with softer pressed shades.
- ❄️ Use dots and dashes to create different texture, ie gravel and grass in the foreground.
- ❄️ Smudge backgrounds and skies to create a more distant feel.

tip

When using pastels place your hand on the paper carefully and do not drag it or you will smudge your work.

When the artwork is finished lightly spray with hairspray to fix your pastels.

tip



Winter Trees



INTRODUCTION

There is a very different landscape to be observed during the Winter months and this provides a great opportunity to take photos and make sketches. Winter Trees uses paints to produce a simple stylised image of a bleak tree lined landscape.

RESOURCES & EQUIPMENT

A4 white paper/water colour paper
A range of paints for colour mixing
Thick and thin brushes
Water

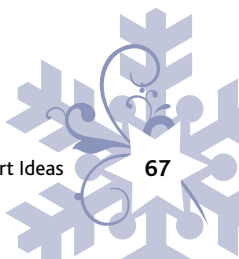
tip

To create a thin end to the branches lift the brush away from the paper as you come to the end.

METHOD

- ❄️ Start by lightly sketching a wavy line about 1/5th from the bottom of the background paper, this will mark the top of the snowline. Above the snowline paint in the background sky. Use a large brush to sweep across the paper horizontally using quite wet aqua coloured paint.
- ❄️ Then brush occasional lines of purple and magenta across the background whilst the aqua paint is still wet - again in a horizontal direction. Also use the purple and magenta paint to produce a quickly painted line along the top of the snowline and while the paint is beginning to dry on the brush, paint quick brush lines to add texture to the snowy area.
- ❄️ Now leave the background to dry.
- ❄️ When the background is dry mix up some fairly thick beige coloured paint. Using a thin brush paint in the trunks and branches of the trees. Start the base of the trees in different places, some close to the bottom of the page others on the snowline so that they are slightly staggered.
- ❄️ Finally use thick white paint to add snowflakes to the background and to add snow to some of the branches.

More Ideas



Christmas Snow Globe

INTRODUCTION

This is a fun paper based activity. Children have the opportunity to be creative yet the resources required are very simple.

The time required for this design is fairly short and the amount of preparation and mess is minimal - however the outcome is a bold design that works well both for display and card making.

RESOURCES AND EQUIPMENT

A4 background sheets

White paper

Sugar papers / Felt in various colours

Glitter and Sequins

Scissors

PVA Glue & Glue sticks

Black pen



METHOD

- ❄️ Start with each pupil having an A4 sheet of coloured card or sugar paper. (Whenever glue is being used, thicker paper or card works best)
- ❄️ Cut out circle shape in white paper and a black base and stick this down to the background paper. *You can use our resource in the back of this book to create your globe shape.*
- ❄️ Next using a smaller circle create the sky using a blue sugar paper and cut out the snow in white and stick them down inside the original circle globe shape
- ❄️ Design a penguin character; start with black and white paper then add a bobble hat and scarf made from felt or sugar paper lastly glue on googly eyes and a beak. Glue in place.
- ❄️ To design a snowman character; cut out snowman body and head in white paper then add a scarf and hat made from coloured sugar paper. next add the carrot nose and draw on the face and buttons with a black pen. Glue in place.
- ❄️ To design a tree - cut out and glue down a tree from green sugar paper and add a yellow pot then decorate with sequins and a star at the top.
- ❄️ Decorate the sky with glitter to represent the snow.
- ❄️ Write a christmas greeting on the base of the snow globe or even personalise each one in the class with their name.

tip

Use our resource in the back of this book to help create your globe shape.

Christmas Jumper Design

INTRODUCTION

A great design reflecting the latest fad of the Christmas Jumper! This is a very quick design and can easily be completed in an hour. Using our downloadable template of an outline of a jumper as a starting point - pupils can design their own to create a fun theme for a Christmas Card!

RESOURCES AND EQUIPMENT

Downloadable jumper template - photocopied
Felt Tip Pens or Paints



METHOD

- ❄️ Download and photocopy our jumper template from our website - a sample of this is in the back of this book.
- ❄️ Sketch the design with a light pencil and colour design carefully with felt pens.
- ❄️ Discuss themes and patterns and look at some examples on the internet.

tip

Making your jumper design on A4 paper will make it easier to colour in carefully - when we shrink your design to fit on a card it could look very intricate!