

Early Learning and Childcare Shetland



Registration Guide for Parents and Carers 2024-2025

This booklet contains information on funded early learning and childcare for all three and four year olds and some two year olds.



Early Learning and Childcare

Our Vision:

'Children in Shetland have the very best early years of childhood – making Shetland the best place to grow up.'





Early Learning and Childcare

Contents

What is funded early learning and childcare?	Page 4
Is my child eligible?	Page 5
If my child is eligible, when can they start?	Page 5
What is the qualifying criteria for two year olds?	Page 6
Care experienced parents, carers and children	Page 7
Where can my child receive funded early learning and childcare?	Page 8
How many hours can my child receive?	Page 8
What if my child has an additional support need?	Page 9
Are snacks and meals provided?	Page 10
Can I get transport to the provider?	Page 10
How do I access a place?	Page 11
Will I get the place I ask for?	Page 12
My child is already registered. Do I need to register again?	Page 12
What are the term time dates?	Page 13
Where can I get more information and support?	Page 14
How can I use my entitlement?	Page 15
Providers	Page 16
Childminders	Page 17

Introduction to Early Learning and Childcare Settings

Aith Nursery	Page 18
Baltasound JHS Early Years	Page 19
Bell's Brae Nursery	Page 20
Brae High School Nursery	Page 21
Burra Early Years	Page 22
Cunningsburgh Nursery	Page 23
Dunrossness Nursery	Page 24
Fair Isle Early Years	Page 25
Foula Early Years	Page 26
Hame fae Hame	Page 27
Happyhansel Early Years	Page 28
Lerwick Early Learning and Childcare	Page 29
Lunnasting Nursery	Page 30
Mid Yell JHS Nursery	Page 31



Early Learning and Childcare Contents continued

Mossbank Early Years	Page 32
Peerie Foxes	Page 33
Sandwick Early Years	Page 34
Early Years Scalloway	Page 35
Skeld Nursery	Page 36
Sound Nursery	Page 37
Tingwall Nursery	Page 38
Urafirth Early Years	Page 39
Whalsay Early Years	Page 40
Whiteness Early Years	Page 41
Link to online registration form	Page 42



Early Learning and Childcare

What is funded early learning and childcare?

From August 2020 every three and four year old, and some two year olds, in Shetland have been entitled to 1140 hours per year of free early learning and childcare (ELC). Being part of a high quality early learning and childcare setting will help children to learn and develop the skills and confidence to succeed in all areas of their lives.

This guide intends to provide all the information needed to make choices about the right early learning and childcare setting to meet the needs of your family.



Early Learning and Childcare

Is my child eligible?

Three and Four Year Olds

All children born between 1 March 2021 and the 28 February 2022 are eligible for up to 1140 hours of free early learning and childcare.

Two-Year Olds

A two year old may be eligible to a funded place if you meet one or more of the criteria on the following page.

If my child is eligible, when can they start?

Three and Four Year Olds

If the child's third birthday falls between 1 March 2024 and 13 August 2024, they will be eligible to start their placement from 14 August 2024.

If the child's third birthday falls between 14 August 2024 and 28 February 2025, they will be eligible to start their placement from the day after their birthday.

Two-Year Olds

All eligible two year olds will be able to start the day after their second birthday (once the placement has been confirmed).



Early Learning and Childcare

What is the qualifying criteria for two year olds?

Children aged two years old could be eligible for funded early learning and childcare if they live in a household where a parent or carer is:

- in receipt of certain benefits (listed below); or
- care experienced

Eligible benefits are:

- Income support
- Jobseeker's Allowance (income-based)
- Employment Support Allowance (income-based)
- Incapacity Benefit or Severe Disablement Allowance
- State Pension Credit
- Support under Part VI of the Immigration and Asylum Act 1999

If you receive tax credits or Universal Credit, you can earn a certain amount of money and still be eligible. These income thresholds change annually.

From 1 April 2023, if you are on:

- Child Tax Credit but not Working Tax Credit, then your earnings can be £18,725 or less
- Child Tax Credit and Working Tax Credit, then your earnings can be £8,717 a year or less
- Universal Credit, then your total household take-home pay can be £726 a month or less. Your take-home pay can be found in the deduction section of your statement.



Early Learning and Childcare

Care experienced parents, carers and children

Two year olds are eligible for a funded placement if they are, or have been at any point:

- Looked after
- Under a Kinship Care Order
- Under a Guardianship Order

Care experienced parents and carers are now eligible to apply for funded early learning and childcare for their two year old child. 'Care experience' includes individuals who have previously lived in:

- Foster Care
- Kinship Care
- Residential Care
- Those who have been subject to a Compulsory Supervision Order through the Children's Hearing (looked after at home/away from home)



Early Learning and Childcare

Where can my child receive funded early learning and childcare?

There is a list of all early learning and childcare providers within this guidance. There are no catchment areas for early learning and childcare* so you can select any provider that you feel will best meet your needs. You can choose one provider or you can select more than one.

*Please note that whilst there are no catchment areas for early learning and childcare, when your child starts school, catchment areas do apply.

Not all providers are registered for two year olds. The list of providers will detail the age group they cater for. If there is not a provider on the list that meets your needs, or if you would like to discuss your options, please contact the Early Learning and Childcare Team via e-mail: ELC@shetland.gov.uk or phone: (01595) 744074 / 744797.

We would recommend that you contact your preferred early learning and childcare setting to discuss any questions you have before completing the registration form. It is often helpful to visit a setting before making a decision.

How many hours can my child receive?

Every three and four year old, and some two year olds, are entitled to up to 1140 hours per year of free early learning and childcare.

This equates to up to 30 hours per week term time (over 38 weeks per year) or 23 hours per week year round (over 50 weeks per year).



Early Learning and Childcare

What if my child has an additional support need?

We are committed to Getting it Right for Every Child (GIRFEC) and appropriate support will be put in place to meet their individual needs. It is important that information on any additional needs your child may have is highlighted on your registration form. It is also useful to speak to your chosen provider as soon as your place has been confirmed.

We are delighted to be working in partnership with Ability Shetland and will be able to offer children access to their holiday club **as part** of their funded provision. Ability Shetland's Holiday Club is for children and young people with a disability or additional support needs. If you choose to use the club during the holiday period, you will be able to use some of your allocated hours towards this. This will mean that you do not pay to access the club. Please contact the Early Learning and Childcare Team via e-mail: ELC@shetland.gov.uk, phone: (01595) 744074 / 744797 or contact Ability Shetland on 01595 743922 for further information.



Early Learning and Childcare

Are snacks and meals provided?

Children who are in a setting over lunchtime will be offered a free lunch. A copy of a sample menu can be viewed upon request at the setting of your choice.

Parents and carers can also opt to provide their child with a packed lunch. There are no facilities to warm lunches and there may be restrictions on what food types can be brought in.

Snacks will be provided for your child free of charge.

Can I get transport to the setting?

Parents and carers are responsible for taking children to their setting. If parents and carers are having difficulties in doing this, please talk to the one of the Early Learning and Childcare Team at Children's Services via e-mail: ELC@shetland.gov.uk or phone: (01595) 744074 / 744797.



Early Learning and Childcare

How do I access a place?

Registrations will open on Friday 8 March 2024 and will close on Friday 15 March 2024. During this time you need to complete the **online** registration form and ensure that it is submitted by **6pm on Friday 15 March 2024** to be included in the initial placing allocations.

Online registration forms can be accepted after this deadline, but it may reduce your chances of getting the provision you would like.

As part of the online registration process you will be required to submit a photograph of your child's birth certificate. This will be used to verify their date of birth.

If you are registering an eligible two year old you will also be required to submit relevant supporting documentation online.

If you have any difficulties completing the online form please contact a member of the Early Learning and Childcare Team for support.

We will write to you by 30 April 2024 to confirm your placement. Your details will be passed on to your provider(s) who will contact you about what happens next.



Early Learning and Childcare

Will I get the place I ask for?

We will do everything we can to arrange the provision you have asked for. If it is not possible, we will contact you to discuss alternative arrangements. Allocations are made in accordance with the Shetland Island Council's Admissions Policy which can be found using this link: [Admissions Policy](#).

My child is already registered. Do I need to register again?

All eligible two-year-olds **must** re-register as a three year old using the registration form for three and four year olds.

If your three or four year old has accessed up to 1140 of funded entitlement the previous year, you **do not** need to register them again and your previous weekly pattern will remain, unless you complete the change of pattern form which will be emailed to you from your child's setting.



Early Learning and Childcare

What are the term time dates?

School Term Dates 2024/25

Term 1	Wednesday 14 August 2024 to Friday 11 October 2024
Term 2	Wednesday 30 October 2024 to Friday 20 December 2024
Term 3	Tuesday 07 January 2025 to Friday 04 April 2025
Term 4	Tuesday 22 April 2025 to Friday 27 June 2025
Occasional Holiday Dates <ul style="list-style-type: none">• Wednesday 29 January 2025• Friday 21 February 2025• Monday 24 February 2025• Monday 21 April 2025	In-Service Dates <ul style="list-style-type: none">• Monday 12 August 2024• Tuesday 13 August 2024• Monday 28 October 2024• Tuesday 29 October 2024• Monday 06 January 2025

Please note that if you are using a term time model, there will be no funded provision for an in-service day or occasional holiday dates.



Early Learning and Childcare

Where can I get more information and support?

We are here to help! We recognise that the different options may be complex. Please do not hesitate to contact us for help.

Further information and support is available from any of early learning or childcare setting or by contacting the Early Learning and Childcare Team at Children's Services via e-mail: ELC@shetland.gov.uk or phone: (01595) 744074 / 744797.



Early Learning and Childcare

How can I use my entitlement?

There are a number of options available to help you get the most out of your funded hours:

Term time only (*up to 30 hours per week over 38 weeks per year*)

If you would like term time only you can opt for a number of hours that suit your needs. The hours you choose must be across one block of time each day. The pattern that you choose can vary from day to day but your weekly term time pattern must remain the same.

Year round (*up to 23 hours per week over 50 weeks per year*)

There are a limited number of settings that can offer year round provision. If you require year round provision you should choose one of these providers. You can opt for a number of hours that suit your needs. The hours you choose must be across one block of time each day. The pattern that you choose can vary from day to day but your weekly pattern must remain the same year round.

Split Placements

You can choose to have a split placement between two or more settings. This can be on a term time only basis, a year round basis or a mix of the two. You can opt for a number of hours that suit your needs. The hours you choose at each provider must be across one block of time each day. The pattern that you choose can vary from day to day but your weekly pattern must remain the same.

Blended Provision (Childminder and Setting)

You can choose to apply for a blended model between a setting and a registered childminder. Blended placements are limited but we will make every effort to try and meet your needs.

Attendance patterns **must be set with a weekly recurring pattern**. Ad hoc changes to patterns cannot be accommodated. Should your circumstances change you can request to change your set weekly pattern at any time. All requests to make changes to a pattern must be approved by the central Early Learning and Childcare Team prior to commencement.



Early Learning and Childcare Providers

You can choose any of the following settings for three and four year olds and some settings also offer places for eligible two year olds. To register for a place, please use the registration form for three and four year olds or the form for eligible two year olds, both of which can be found online at www.shetland.gov.uk/early-learning-childcare

Setting	Contact Details	Opening/Closing Time	Year Round or Term Time	Protected Lunchtime
<i>*Accepts eligible two year olds</i>		<i>All settings operate 5 days per week (Monday to Friday)</i>	YR / TT	<i>No pick-ups or drop-offs during these times</i>
<i>Aith Nursery</i>	<i>01595 807400</i>	<i>8.15am to 4.15pm</i>	TT	<i>11.45am to 1.15pm</i>
<i>Baltasound JHS Early Years*</i>	<i>01595 807020</i>	<i>8.30am to 4.00pm</i>	TT	<i>12.15pm to 1.15pm</i>
<i>Bell's Brae Nursery</i>	<i>01595 743720</i>	<i>8.30am to 4.30pm</i>	TT	<i>11.45am to 1.15pm</i>
<i>Brae High School Nursery*</i>	<i>01595 745601</i>	<i>8.30am to 4.30pm</i>	YR/TT	<i>11.45am to 1.00pm</i>
<i>Burra Early Years</i>	<i>01595 859451</i>	<i>8.30am to 3.00pm</i>	TT	<i>N/A</i>
<i>Cunningsburgh Nursery</i>	<i>01595 807250</i>	<i>8.30am to 4.30pm</i>	TT	<i>11.45am to 1.00pm</i>
<i>Dunrossness Nursery</i>	<i>01595 745440</i>	<i>8.15am to 4.15pm</i>	TT	<i>11.45am to 1.15pm</i>
<i>Fair Isle Early Years*</i>	<i>01595 760254</i>	<i>By arrangement</i>	TT	<i>N/A</i>
<i>Foula Early Years*</i>	<i>01595 745026</i>	<i>By arrangement</i>	TT	<i>N/A</i>
<i>Hame fae Hame*</i>	<i>01595 881146</i>	<i>7.30am to 6.00pm</i>	YR/TT	<i>N/A</i>
<i>Happyhansel Early Years</i>	<i>01595 807458</i>	<i>8.30am to 4.00pm</i>	TT	<i>12.15pm to 1.15pm</i>
<i>Lerwick Early Learning and Childcare*</i>	<i>01595 745398 / 745402</i>	<i>8.45am to 5.00pm</i>	YR/TT	<i>12.00pm to 1.30pm</i>
<i>Lunnasting Nursery</i>	<i>01595 745690</i>	<i>8.45am to 3.00pm</i>	TT	<i>12.15pm to 1.15pm</i>
<i>Mid Yell JHS Nursery*</i>	<i>01595 745050</i>	<i>8.45am to 3.45pm</i>	TT	<i>12.00pm to 1.00pm</i>

Continued on next page →



Early Learning and Childcare Providers

Setting	Contact Details	Opening/Closing Time	Year Round or Term Time	Protected Lunchtime
<i>*Accepts eligible two year olds</i>		<i>All settings operate 5 days per week (Monday to Friday)</i>	YR / TT	<i>No pick-ups or drop-offs during these times</i>
<i>Mossbank Early Years*</i>	<i>01595 807280</i>	<i>8.15am to 4.15pm</i>	TT	<i>12.45pm to 1.45pm</i>
<i>Peerie Foxes*</i>	<i>01595 696696</i>	<i>7.45am to 5.30pm</i>	YR/TT	<i>12.00pm to 12.45pm</i>
<i>Sandwick Early Years</i>	<i>01595 745320</i>	<i>8.30am to 4.30pm</i>	YR/TT	<i>11.45am to 1.15pm</i>
<i>Early Years Scalloway</i>	<i>01595 743777</i>	<i>8.15am to 4.15pm</i>	TT	<i>11.45am to 1.15pm</i>
<i>Skeld Nursery</i>	<i>01595 807480</i>	<i>9.00am to 3.00pm</i>	TT	<i>TBC</i>
<i>Sound Nursery</i>	<i>01595 744982</i>	<i>8.30am to 4.30pm</i>	TT	<i>11.45am to 1.15pm</i>
<i>Tingwall Nursery</i>	<i>01595 807224</i>	<i>8.30am to 4.30pm</i>	TT	<i>11.45am to 1.15pm</i>
<i>Urafirth Early Years</i>	<i>01595 807460</i>	<i>8.15am to 3.45pm</i>	TT	<i>11.45am to 12.45pm</i>
<i>Whalsay Early Years</i>	<i>01595 743800</i>	<i>8.15am to 4.15pm</i>	TT	<i>11.45am to 1.00pm</i>
<i>Whiteness Early Years*</i>	<i>01595 745380</i>	<i>8.15am to 4.15pm</i>	TT	<i>12.15pm to 1.30pm</i>

Please note that most ELC settings operate a protected lunch time. This means that no children can be dropped off or picked up during a specified period of time. This is to ensure that children have a high quality lunch time experience.

Childminders who offer funded provision

Provider Name	Contact Details	Provision Ages and Times
<i>Hazel Smith (Dunrossness)*</i>	<i>01950 460541</i>	<i>Times by arrangement</i>
<i>Sarah Munro (Dunrossness)*</i>	<i>01950 460770</i>	<i>Times by arrangement</i>
<i>Susan Clelland (Lerwick)</i>	<i>01595 696933</i>	<i>Times by arrangement</i>

All settings and childminders providing funded early learning and childcare have to meet the National Standard to ensure provision is of high quality.



Introduction to Early Learning and Childcare Settings

Aith Nursery

Aith Nursery is part of Aith Junior High School, located on the west side of Shetland. We are a busy nursery at the centre of an active community with the beach and local woods nearby. We have a knowledgeable and dedicated staff team, are well supported by local families and are registered to take up to 32 children.

At Aith Nursery we believe that every child is unique and develops in their own time, the early years is not a race or competition but a journey full of fun and adventure. We aim to nurture happy and curious children who know they are valued by those around them and are supported to grow and reach their full potential.

Every area of our early years curriculum is based around play, offering creative learning experiences every day with children's interests and needs at the centre of our practice. Care, play and learning at Aith Nursery was recognised as 'Very Good' on a recent visit from the Care Inspectorate.



Inclusive : Safe : Ready : Respectful : Achieve

Aith Nursery is a caring community where it is safe to try new things, we are kind to each other, ready to play and learn new things.

Aith Nursery is open from 8.15am to 4.15pm Monday to Friday and has a protected lunchtime between 11.45am to 1.15pm.



Introduction to Early Learning and Childcare Settings

Baltasound JHS Early Years

Baltasound Junior High School, is the most northerly school in the United Kingdom. We are a fully inclusive school with Early Years to Secondary 4 students all on the same campus. A diverse and enterprising school, we pride ourselves as being part of a dynamic island community with students, staff and parents all working together. Our motto is:

Peerie School, Big Dreams!



This reflects that we are a small rural school on the most northerly island in the UK; although we are able to progress through our school and become anyone we dare or dream to be.

At Baltasound Early Years we aim to work together with parents and carers, to ensure that all children feel valued, safe, secure and happy. We offer provision for learners starting at 2 years old, until they start Primary 1 and have close links with the rest of the school. Play is an important part of our Early Years curriculum and we offer free-flow play from inside to outside.

Our school values are READY, SAFE and RESPECTFUL. We believe that these encompass what we need to be an active member of our community and to make sure we are equipped with all the skills required in life. If we are ready, safe and respectful then we can be in the best position to learn and grow. We promote a culture of tolerance, inclusion, diversity, equality, fairness and opportunity.





Introduction to Early Learning and Childcare Settings

Bell's Brae Nursery

Bell's Brae Nursery is a large setting with free-flow access to our indoor/outdoor area and nursery outdoor area. We have capacity for 65 children.

Our vision statement says that; *"Bell's Brae is a community where everyone achieves and gains happy memories."*

Therefore, we want to make sure that attending Bell's Brae is a happy and enjoyable experience for every child from the very beginning. For this reason, communication and partnership between home and nursery is essential. We value parents' and carers' knowledge of their child and we strive to work collaboratively to ensure positive interactions, experiences and spaces for all children.



'Every child has the right to play'

In line with Article 31 of the United Nations Convention on the Rights of the Child, we promote and value that all children have the right to participate in and lead their play.

Within the nursery, we have three zones – social (e.g. role play, games table), creative (e.g. sand and water tray, art area) and outdoors/discovery (e.g. indoor/outdoor area, blocks, garden). Staff observe children and ensure that the resources in each zone reflect their interests, supporting high-quality interactions, experiences and spaces.

Play is essential to healthy development from birth to adulthood, contributing to capacity for learning, resilience and the development of physical, cognitive, social and emotional skills.



Introduction to Early Learning and Childcare Settings

Brae High School Nursery

Brae High School's vision is to create a 'Learning Community' that is nurturing, supportive, ambitious and enables all children and young people to thrive.

Brae Nursery offers places for children aged 2-5 years. Brae Nursery is part of Brae High School. We work closely with the School, and this supports transition from nursery to school.

We have a very spacious main room, breakout spaces, kitchen area and outdoor areas. We have established zones within our continuous provision, these are:



- Art and Craft
- Sensory and Discovery
- Role Play
- Construction
- Story (Literacy)
- Outdoors
- Embedded Messaging – The aim of this is to have opportunities for mark making embedded throughout all zones in the nursery. The children will have opportunities to write and read at all times.

The nursery has many stimulating and challenging resources, aiming to be appropriate for the children within the nursery. Staff regularly reflect on how the resources/areas are being used and take a responsive approach on developing the setting.





Introduction to Early Learning and Childcare Settings

Burra Early Years

Here at Burra we see ourselves as a well-established integral part of the local community. We strive to create a homely nurturing environment that is child centred, fostering learning through the children's natural curiosity and interests.

We operate school term time Monday to Friday 8.30am – 3.00pm





Introduction to Early Learning and Childcare Settings

Cunningsburgh Nursery

Cunningsburgh School's vision that everyone should **"SHINE"** starts with our very youngest learners. We want everyone to be **Successful, Happy, Independent, Nurtured and Engaged**.

The homely environment at Cunningsburgh Nursery provides safe, stimulating spaces where the children can confidently lead their own learning by being curious and developing independence. All with love, care and dedicated support from our experienced staff team.

We recognise the importance of high quality play and real life experiences in all children's learning and development. These are enhanced through opportunities within the setting, both inside and outdoors, and by exploring our wider community and all that it has to offer.

Parents and families are partners in both their children's journey and that of the setting and we value all the knowledge, skills and support they provide.



We truly are a home from home that encourages all our children to get the most out of each and every day.





Introduction to Early Learning and Childcare Settings

Dunrossness Nursery

Our nursery setting offers a caring and nurturing environment where children feel safe to be curious and creative, explore and communicate. The learning occurs through play inside and outside, which is child-led, where we follow the child's interests.

The skilled staff in nursery are able to observe the children at play and support and extend their play, sometimes standing back, sometimes intervening to extend or offer ideas. The staff are experienced in planning in the moment and using questioning or suggestions to extend learning. We focus on the learning process, not the product.

The nursery is very much part of the school and the children have many opportunities to become used to the whole school building and the wider school community.

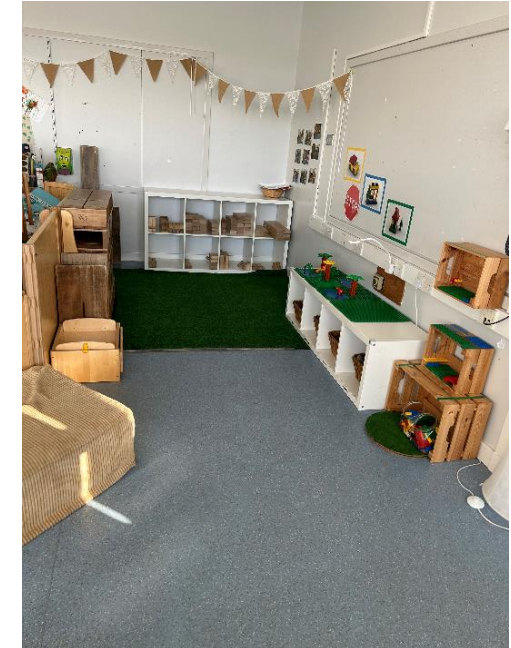


Staff are available daily and are delighted to answer any questions or concerns you may have.

Our schools ethos:

Living Laughing Learning

A caring, happy school that nurtures, encourages and supports every individual to Determinedly Pursue Success in all areas of their lives.



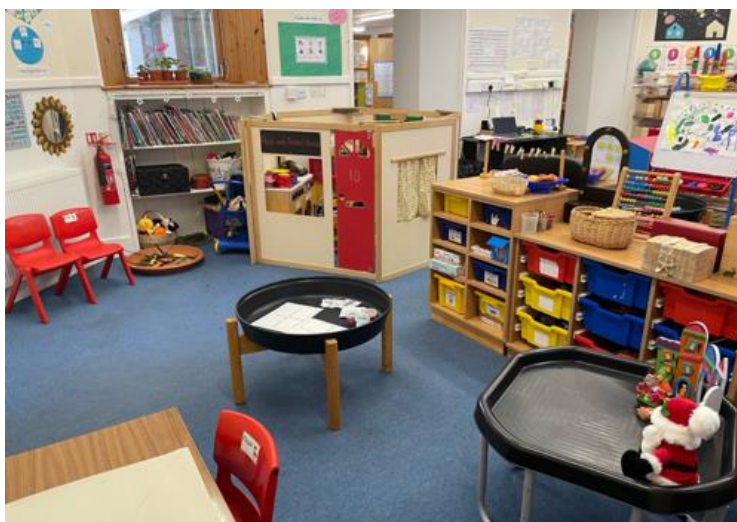


Introduction to Early Learning and Childcare Settings

Fair Isle Early Years

At Fair Isle Early Years, our aim is to nurture and support each individual child on their unique learning journey. Our small island community and small setting size, allow staff to work very closely with children and their families. We create a welcoming, positive and supportive environment where children feel safe, happy and inquisitive. High quality interactions, experiences and spaces allow curious minds to flourish.

Our indoor area is well-resourced and spacious. We have access to the adjacent community play park and a large playground with climbing apparatus. Our school garden features a mud kitchen and large sand area. Vegetables and some fruits are grown in our raised bed and fruit cage. Healthy produce is enjoyed in school lunches or as a snack. We have an outdoor shed that was recently adapted into a sheltered learning space. Fair Isle provides a rich source of outdoor exploration and enjoyment through local walks or community visits.



FAIR and friendly
Inspired to do our best
Self-belief
Learning together
Empathy



Introduction to Early Learning and Childcare Settings

Foula Early Years

Foula Early Years is at the “Edge of the World” – a peerie island 20 miles west of the Shetland mainland. Children have time and space to play and explore in the indoor and outdoor environment with caring and nurturing staff who are attentive to individual needs. There are frequent opportunities to learn from others in the community, utilising local skills and expertise.



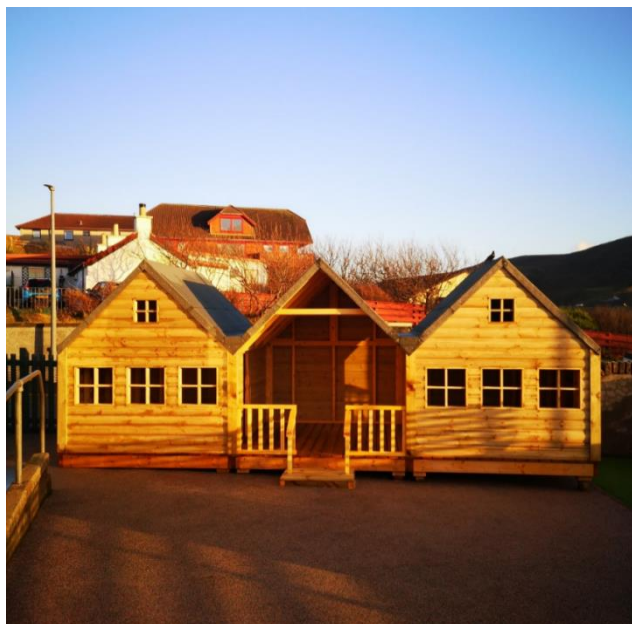


Introduction to Early Learning and Childcare Settings

Hame fae Hame

Hame Fae Hame has been providing trusted childcare in Scalloway for over a decade, founded by Kaye Sandison the nursery now supports families from across Shetland.

Our well-staffed nursery is well established, being an essential part of the local Shetland community. We believe in giving children the best possible start in life, and to that end our day nursery focuses on each child as an individual, encouraging them to learn and grow in ways that attend to their particular needs.



Please refer to our website for more information - www.hamefaehame.co.uk



Introduction to Early Learning and Childcare Settings

Happyhansel Early Years

In Happyhansel Early Years we aim to get to know all the children as individuals through nurturing relationships and positive interactions. This, along with working in partnership with our families, supports us in providing child-led play activities, carefully structured experiences (indoors and outdoors), appropriate challenge and skill based learning. Situated in the centre of Walls we regularly explore our local community and join the wider school; supporting smooth transitions and continuous learning.

At Happyhansel all pupils have access to make the most of high quality learning opportunities. Together we encourage each other to strive and achieve.



“A Hansel fir Aa”

H A P P Y

Achieving

Nurtured

Safe

Engaged

Learners



Introduction to Early Learning and Childcare Settings

Lerwick Early Learning and Childcare

Isles Haven and Old Infants have merged together to become one service, Lerwick Early Learning and Childcare (Lerwick ELC). We offer early learning and childcare provision for 2 to 5 year olds. There will be the option to register your child for year round or term time provision within the setting depending on the requirements of each individual family.



Within Lerwick ELC we strive to offer the highest quality of early learning and childcare provision through providing a safe and nurturing environment where all children and families are respected, included and supported to thrive.

We aim to:

- Promote positive, nurturing and caring relationships throughout the nursery community.
- Work together with families to ensure every child reaches their full potential.
- Develop a sense of belonging where children feel included, respected and valued as part of their nursery and the wider community.
- Provide play opportunities indoors and outdoors which engage and encourage independence, curiosity and creativity.
- Support learning through positive interactions and experiences in our learning environment.





Introduction to Early Learning and Childcare Settings

Lunnasting Nursery

In Lunnasting Nursery we aim to develop the whole child through a variety of activities, both indoor and out, as well as encouraging individual interests. The nursery is situated within Lunnasting Primary School and is very well resourced. We regularly join in with whole school activities, which allows for a seamless transition from nursery to primary one.

We are aware of the benefit to children when parents and carers are involved in their education. To this end, parents and carers are always welcome to visit the nursery to speak with staff or share information/expertise.



The nursery is open from 8.45am-3.00pm each day. There is capacity for 12 children.



Introduction to Early Learning and Childcare Settings

Mid Yell JHS Nursery

Our Nursery is a place where your child will feel valued and loved. Our curriculum is based firmly on play and active learning. It is stimulating and engaging and offers all children challenge and enjoyment. We will provide innovative and creative opportunities for your children to experience high quality play both indoors and outdoors. They will be offered rich, relevant experiences to enhance their play and practise their skills.





Introduction to Early Learning and Childcare Settings

Mossbank Early Years

Mossbank Primary School and Early Years is an integral part of our local community and our wraparound care facility supports parents and carers from the locality and beyond. We provide care for children aged 2 to 5 years, from 8.15am - 4.15pm, term time. This includes a funded early learning and childcare session for registered children.

We aim to offer a warm welcoming and stimulating learning environment where children's needs are paramount. The staff firmly believe that it is important to build strong, positive and open relationships between home and childcare. We feel this is the most successful way to help each child develop to the best of their ability.



In the ELC setting there is a strong emphasis on learning through play with an investigative approach. Children are encouraged and supported to:

- Actively explore their world both indoors and outdoors
- Discover new information
- Develop language and critical thinking skills
- Apply their ideas in meaningful ways
- Develop social and emotional skills



Introduction to Early Learning and Childcare Settings

Peerie Foxes

Peerie Foxes is committed to giving your child the support to thrive and develop in our Lerwick based playrooms. Using the medium of play, alongside responsive staff support, love and respect we will work with and for you to ensure your child's needs are met and your expectations exceeded.



Together we aim to:
Play, sing, leap, run, explore,
jump, splash, cuddle, soar,
cook, dress-up, share stories, draw,
paint, get messy, create memories and
more!

We're here for you from 7:45am to
5:30pm, 50 weeks of the year.





Introduction to Early Learning and Childcare Settings

Sandwick Early Years

Sandwick Early Years, based within Sandwick Junior High School, operates a 50 week all year round provision, catering for 3 to 5 year olds.

Sandwick Early Years has a child led approach, giving children the opportunity to lead on their own learning, developing their learning through play.

The setting has a free flow structure enabling the outdoor area to be open at all times, staff support outdoor play in all seasons. The setting provides all-weather suits and welly boots to achieve this. Additionally, staff and children regularly explore the community around them by going on community walks.

Parents and carers can see their child's progression through individual learning logs, staff track children's milestones and progress using developmental overviews, Curriculum for Excellence and celebrate achievements.

Free snack and lunches are provided in the way of 'rolling lunches', enabling your child to continue their play until they are ready to eat.

The nursery offer additional hours that you can purchase on top of your weekly, funded hours. These are available between 8.30am and 4.30pm, provided there is capacity.





Introduction to Early Learning and Childcare Settings

Early Years Scalloway

Our main aims and values are to provide a warm, safe and nurturing environment. We offer high quality learning experiences in all areas of our setting, using natural/real resources and loose parts.

We have an open door policy and have continuous access to nature, the outdoors and the local community.

Our ethos values parental engagement and we fully support communication, collaboration and inclusion. We believe in a child centred approach to play, learning and development with children's rights at our core.

Our staff are committed and welcoming and are registered with the Scottish Social Services Council.





Introduction to Early Learning and Childcare Settings

Skeld Nursery

Skeld Nursery is a small, nurturing setting which provides a safe, welcoming and fun educational environment for young children to play and learn. Our staff are trained in the care and development of young children and regularly complete professional development courses to enhance their practice. We encourage child-led learning, supporting the children to learn through their own interest.



We have an enclosed nursery garden as well as use of the extensive school grounds and adventure play equipment. We are in walking distance of the local play park and nearby beach and marina.

Over the years we have welcomed children, who come from elsewhere in Shetland, who prefer a smaller setting.



Introduction to Early Learning and Childcare Settings

Sound Nursery

Working together to improve outcomes for learners to be the best that they can be.

Sound Nursery is a welcoming and inclusive environment where children have free flow access to indoor and outdoor spaces. Children experience high quality continuous provision, which encourage independence and build skills.

Please visit our Nursery blog to find out more information:

<https://blogs.glowscotland.org.uk/sh/soundnursery/>





Introduction to Early Learning and Childcare Settings

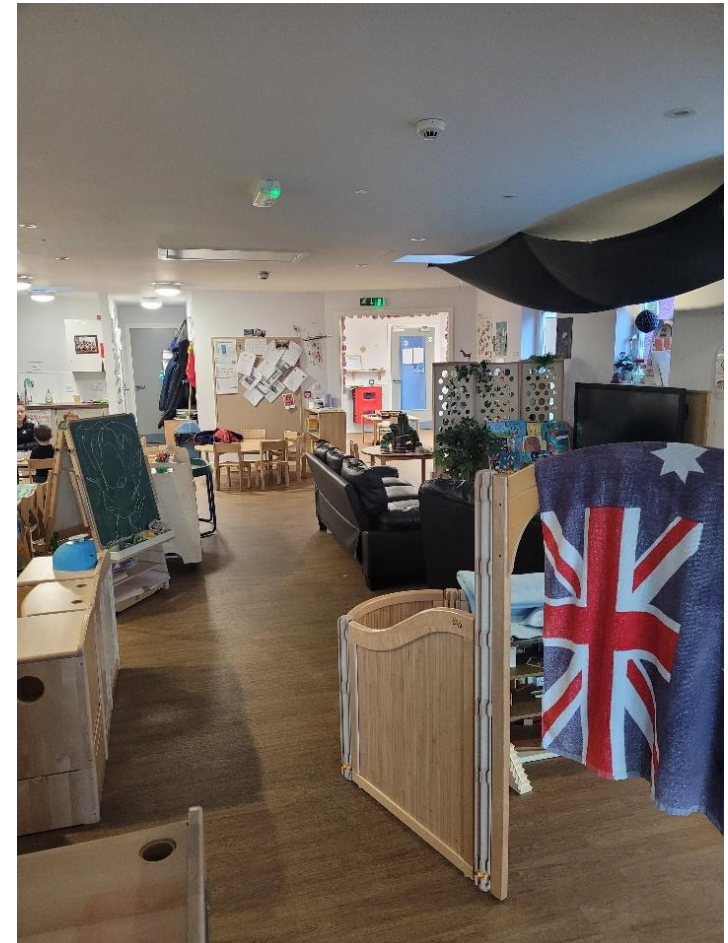
Tingwall Nursery

Tingwall Nursery offers children aged 3 to 5 years old a home-from-home experience in a dedicated nursery space attached to Tingwall Primary School.

Our philosophy is based on a child-centred, nurturing approach and we encourage all children coming into our setting to explore and learn through their play.



Our facilities provide lots of opportunity for children to experience free-flow play with a dedicated indoor/outdoor space and we encourage child-led play, supporting children to make the most of all the learning opportunities that the setting offers.





Introduction to Early Learning and Childcare Settings

Urafirth Early Years

Urafirth Early Years is a welcoming nursery with direct access to our secure outdoor play area, which allows for free flow play from inside to outside. Children can choose from the wide range of equipment and resources available freely, encouraging independence and child-led learning. We encourage a balance between outdoor and indoor play, thus allowing children a wider variety of areas of discovery.

Wir promise to wir peerie folk

As a team of dedicated and skilled educators, we use the Froebelian approach to give a framework and link to the Urafirth School values:

Use teamwork

We are knowledgeable, nurturing educators, who work together and include you.

Respect

Our relationships with everyone matter and have central importance, and each individual is valued.

Achieve

You are unique and valued. Your ideas are supported in the setting to enhance individual learning.

Feel safe

We follow Froebelian principles to nurture independence, security and confidence.

Invent

You are supported in your learning to build new levels of thinking, imagination and creativity.

Responsible

We use a holistic approach to build on confidence and life skills. We value childhood in its own right.

Take learning outside

In all weather and seasons, we use outdoor play to learn and engage with nature.

Help and Care

Everything in the universe is connected. Your thoughts, feelings and actions help you to learn and build friendships.





Introduction to Early Learning and Childcare Settings

Whalsay Early Years

Whalsay Early Years curriculum is based upon a child centred approach with the emphasis on learning through play and covering the outcomes and all aspects of the Curriculum for Excellence at the early level.

We aim to:

- Provide a caring, happy and safe environment in which children can learn through play.
- Encourage positive attitudes towards children, adults and the environment.
- Create a secure and rich environment to enable the children to experiment, explore and individual needs and interests.
- Identify and build upon knowledge and learning previously acquired.
- To encourage open communication with parents/carers and share information about their child.





Introduction to Early Learning and Childcare Settings

Whiteness Early Years

Our Promise - At Whiteness we aim to have:

An **environment** that: is neutral, welcoming and stimulating; provides opportunity for curiosity and creativity within problem solving; has clutter free space to play; offers opportunity to experience outdoor play every day.

Resources that are: real and do not give children false impression; open ended and allow for elements of risky play.



Play and learning which: is child-led with some adult support; is developmentally appropriate to each individual; allows elements of risk and real life experiences; gives opportunity to lead learning and become independent thinkers.

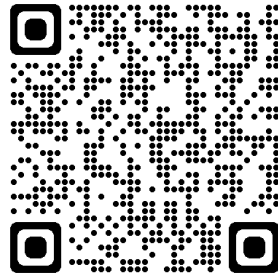
Practitioners who: are qualified and have strong Continuous Professional Development; are open minded and forward thinking; know the children well as individual learners; ask open questions and speak to children at floor level; do not rush children or interrupt play.

High quality early learning and childcare is fundamental in developing skills for life and learning. Your child will develop these skills through carefully planned environments, access to rich core provision and interactions with peers and adults.



Early Learning and Childcare Link to online registration form

To register please go to www.shetland.gov.uk/education and click on Early Learning and Childcare.



If you would like any further information about any of the options available, please contact a member of the Early Learning and Childcare Team:

E-mail: ELC@shetland.gov.uk

Phone: (01595) 744074 / 744797

Thank you for taking the time to read this document. We hope you found it helpful and informative.