

MATISSE



THE SNAIL

THIS WEEK WE ARE LOOKING AT THE ARTIST HENRI MATISSE.

MATISSE WAS FRENCH AND HE LOVED COLOURS AND SHAPES.

MATISSE WAS INTERESTED IN THE PATTERNS AND SHAPES ON THE SHELLS OF SNAILS.

HE WOULD PAINT SHEETS OF PAPER DIFFERENT COLOURS THEN TEAR THEM UP AND STICK THEM TOGETHER TO CREATE SNAIL SHELLS.

CAN YOU SEE THE SNAIL SHAPE?

CAN YOU FIND THE PEERIE MOOTIE SNAIL HIDDEN IN THE PAINTING?



You will need

Paper, pens, Paints, any old coloured paper, glue (not necessary as you can just lay the shapes on top of paper)

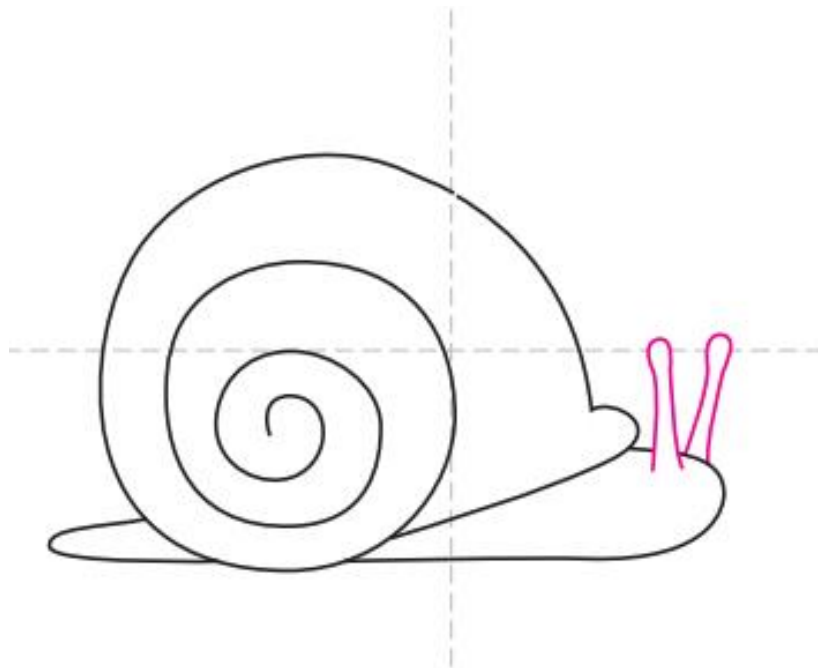


Use paints, pens and pencils to decorate your paper





Now you should start tearing up your coloured paper into different shapes and put to the side



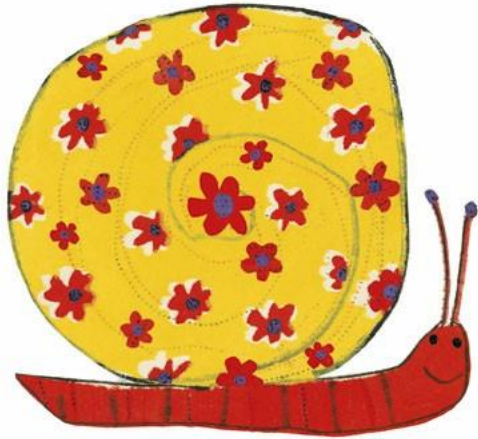
You now need to draw out your snail shape on a separate sheet of paper



It is now time to start sticking down your coloured shapes into the shape of the snail. If you do not have glue just position them where you want them.



You can add in your own designs if you want



Have fun and remember to tidy up your workspace
then sign you and date your work