



Anchor for Families aim is to support you to bring about positive change to your lives.

We want everyone to have access to someone who can listen to your concerns, big or small. Anchor will work with you, supporting you along the way until you no longer need us.

My name is Rachel Hewitt and I am the Anchor For Families North Mainland worker. I am based up North on Tuesdays and Thursdays so if you would like to find out how I can support you please contact me and we can arrange a suitable time and date to discuss any concerns you may have.

Support we can offer

- *Financial Support, are you getting everything you're entitled to?
- *Link you up with the relevant services.
- *Help establish your families needs.
- *Communicate with schools and other services on your behalf.
- *Come with you while you attend meetings.
- *Practical help, like food parcels, clothing etc.

Contact info

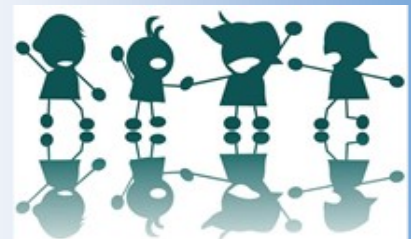
Office:- 01595 745104

Mobile:- 07385965184

Rachel.hewitt2@shetland.gov.uk



Scan me



Participation



People



Place



Money