


How to share work using Glow Mail (Outlook)

There are two ways you can use GLOW- either on a computer / ipad and /or on a handheld device like an ipad, iphone, ipod, android phone or device.

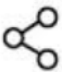


If you have an ipad, iphone, ipod, android phone or device I would like you to do this:

1) Go to Google Play  or AppStore 

2) Download Microsoft Outlook 


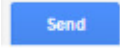
3) Login to Microsoft Outlook using your GLOW username and password this will be sent to you from the school office.

4) You can take pictures of your work on your device and then share that photo

– select share  or  and then find the outlook icon  and share with that.

5) If you are asked about the size of the image, then chooses the reduced, smallest size.

6) In the **To** box write in your teacher's email. The first time you do this you will need to type in the whole email address. After that your device will recognise her as you start typing- you then only need to select the email.

7) Click send which might look like this  or 

8) Well done, you did this!

9) Wait for a reply from your teacher.

If you are using a laptop or computer do this (you can also set this up using an ipad too): Please note the photos of your work that you would like to share will need to be on the computer or ipad you are working on.

- 1) Open Chrome or Internet Explorer or Firefox or Safari – which ever browser you use.
- 2) Type in Glow login



glow login



All News Videos Shopping Images More Settings Tools

About 233,000,000 results (0.27 seconds)

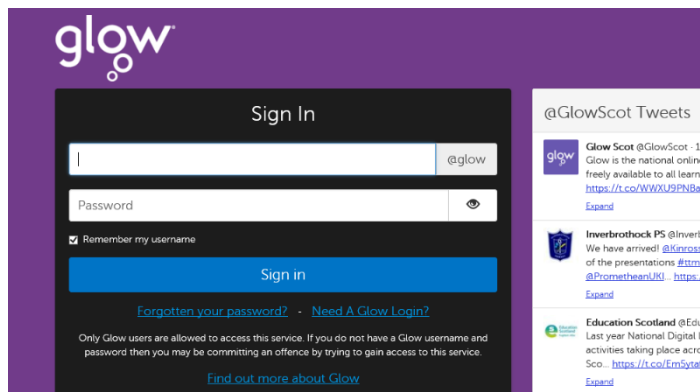
sts.platform.rmunify.com > account > signin > glow

Glow - Sign In - RM Unify

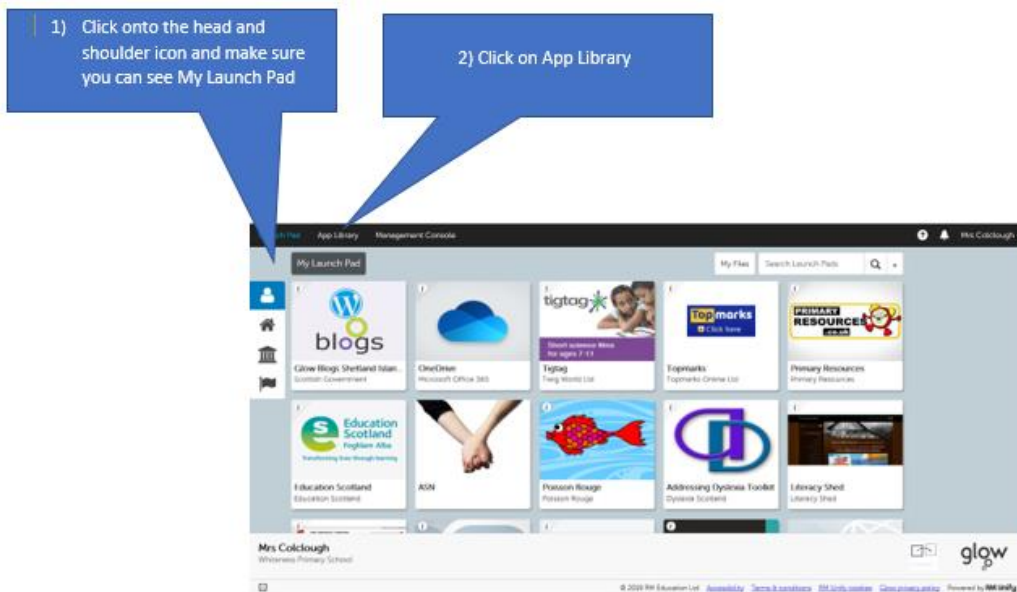
Need A **Glow Login**? Only Glow users are allowed to access this service. If you do not have a **Glow username** and password then you may be committing an ...

- 3) Select the first one that comes up and enter your
1. Username
 2. Password
 3. Sign in

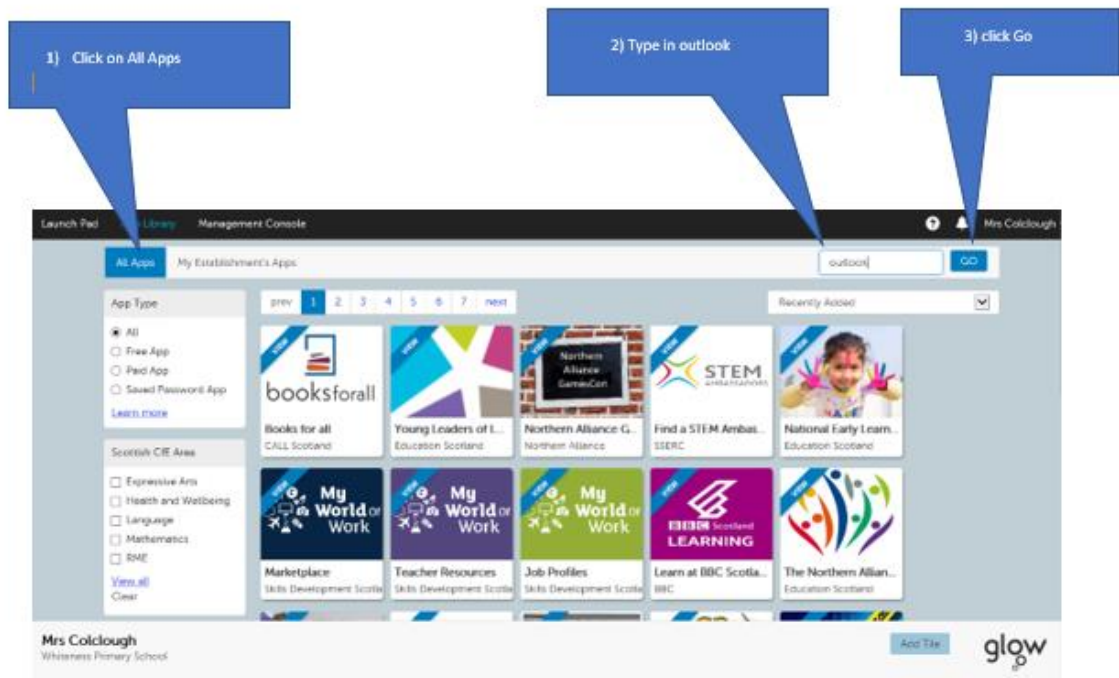
If this is the first time you have logged in at home since the schools shut, then your password is **whiteness** you will be asked to change this the first time you log in.



- 4) Once you are in you will be taken to the Launch pad -this is a picture of mine, yours will look different you need now to add some tiles > to your launch pad this is how:

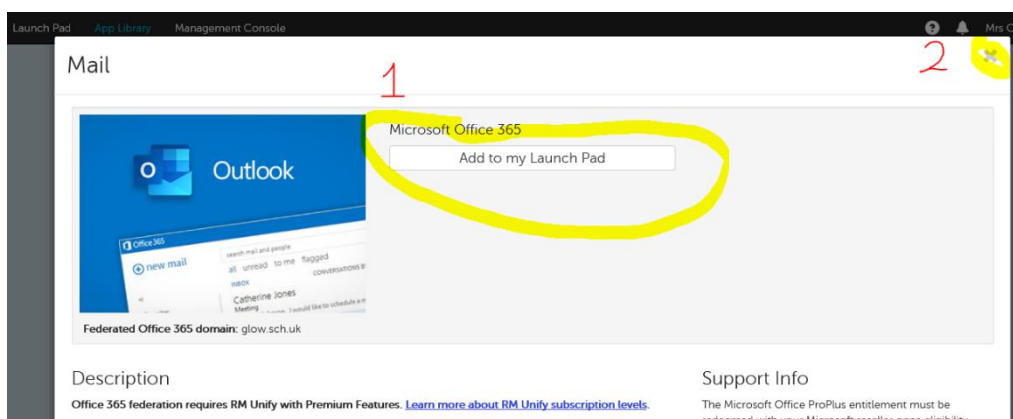
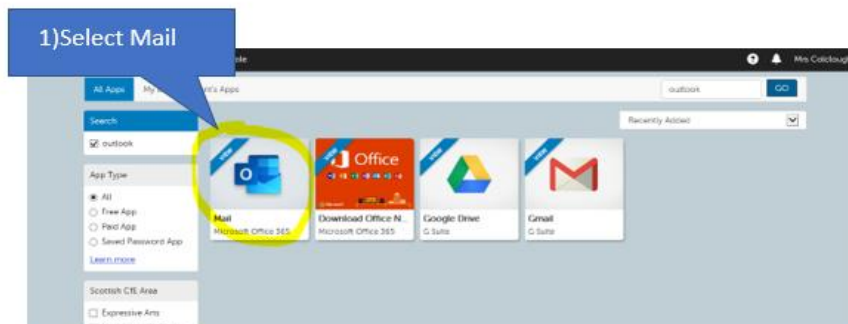


- 5) You are now in your App Library. We are going to add some apps to your Launch Pad here is how...
- 6) Select mail
- 7) Click on Add to my Launch Pad and then exit....you will now need to go back to your Launch

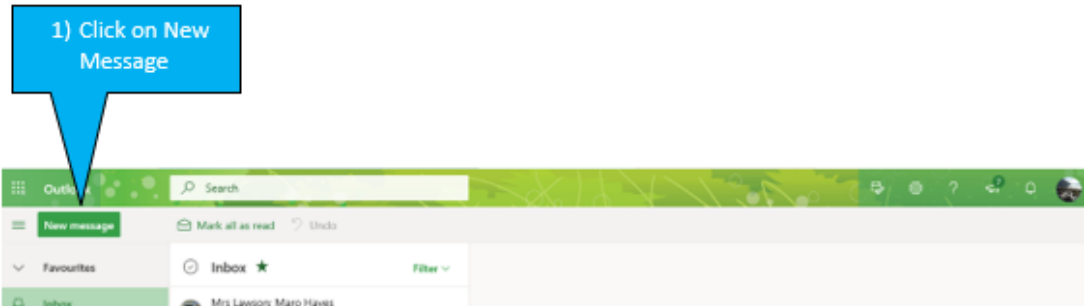


Pad you should see the icon on your Launch Pad. It will be at the end so go there and click

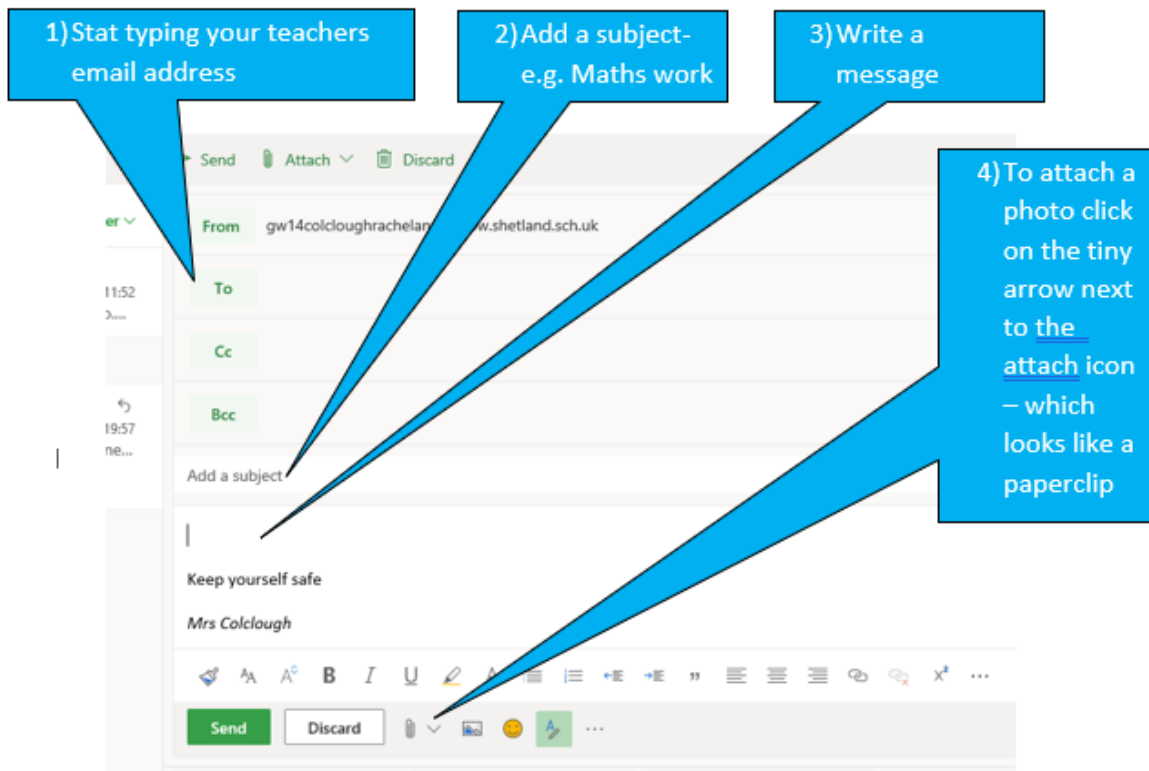
on it to open it.



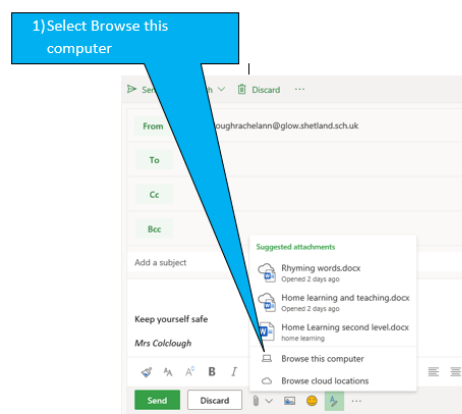
8) When Outlook has opened click on New Message (yours might be a different colour to mine but don't worry)



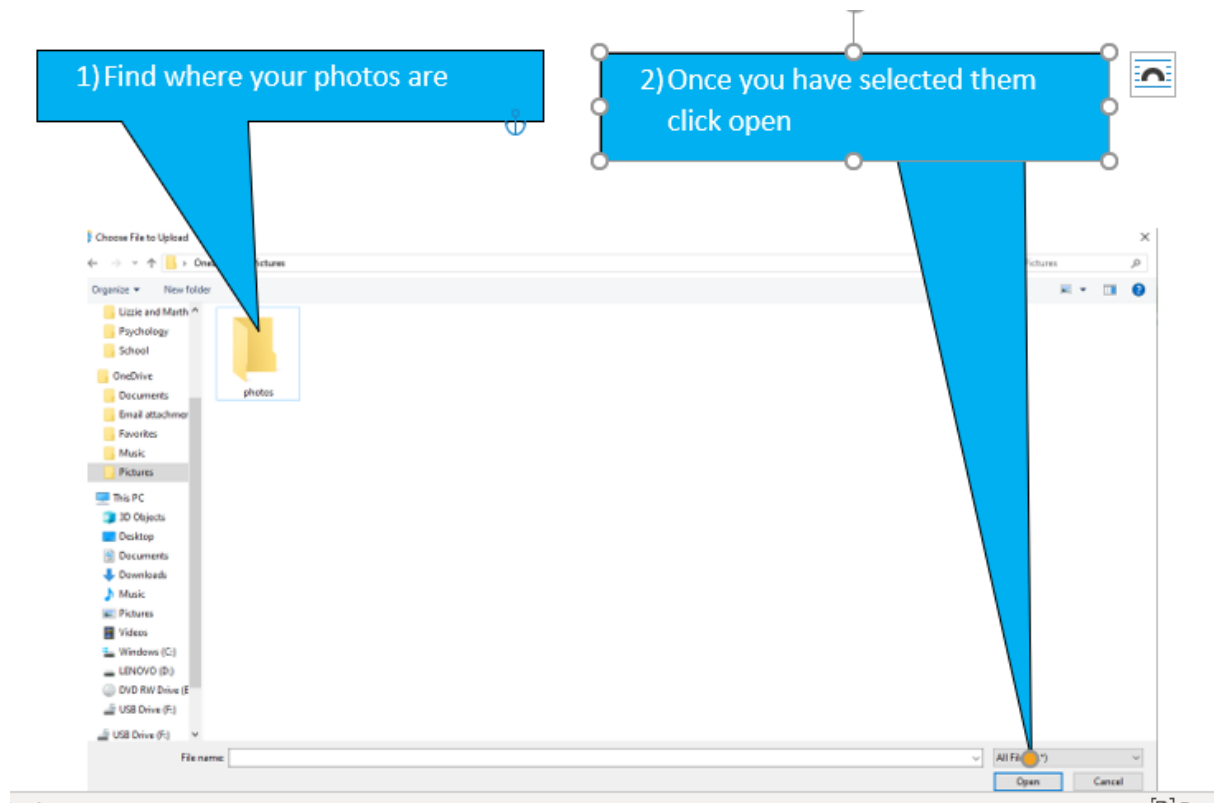
9)



10)



11) Find the photos from your computer / ipad and click open



12) Well done, you have managed to log into glow, add a tile to your Launch Pad, open Outlook and attach and send an email. Good for you....now do take a break and wait to see if you get a reply from your class teacher.