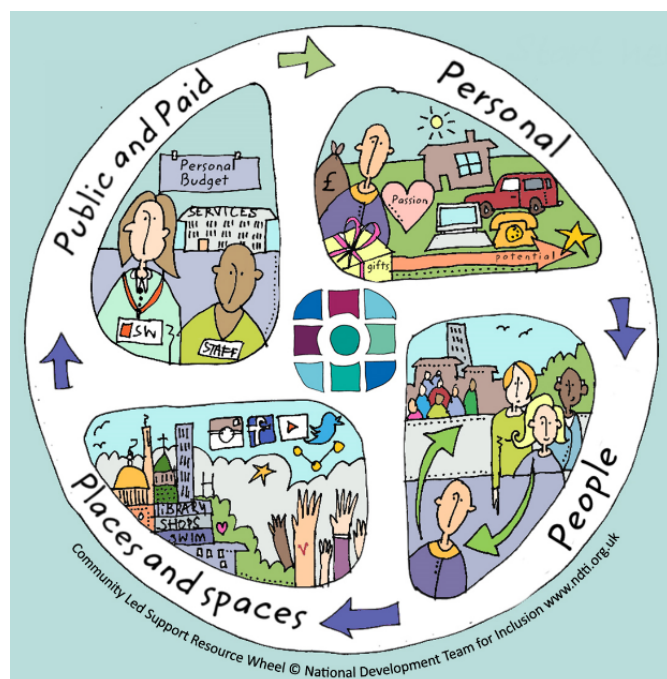


COMMUNITY LED SUPPORT – TASTER SESSIONS –



COME ALONG
TO MEET HEALTH
AND SOCIAL CARE
PRACTITIONERS
AND HELP DESIGN
THE RIGHT SERVICES:
DELIVERED
IN THE RIGHT PLACE
AND
AT THE RIGHT TIME

FIND OUT MORE ABOUT THE COMMUNITY LED SUPPORT PROGRAMME

TUESDAY 3 SEPTEMBER

LIVISITER YOUTH CENTRE, Whalsay	1030-1200
RANKIN LOUNGE, Aith Hall	1500-1630
ISLESBURGH COMMUNITY CENTRE, Lerwick	1930-2100

WEDNESDAY 4 SEPTEMBER

MID YELL HALL, Yell	1030-1200
BALTASOUND HALL, Unst	1330-1500
MOORFIELD HOTEL, Brae	1830-2000

THURSDAY 5 SEPTEMBER

SANDVEIEN NEIGHBOURHOOD CENTRE, Lerwick	1100-1230
SCALLOWAY YOUTH CENTRE, Scalloway	1330-1500
CARNEGIE HALL, Sandwick	1800-1930

FOR MORE INFORMATION, CONTACT
COMMUNITY HEALTH AND SOCIAL CARE

01595 744400