

P7 Welcome

Anderson High School



Information for S1 pupils
2026/27

Hello from the Head Teacher and Depute Head Teacher

Dear Primary 7 pupils

Getting ready for Anderson High School

I am thinking about you coming to your new school in August 2026. We are looking forward to meeting you and working with you all. Ms Jamieson, who will be your Year Group Head in S1 and S2, and I hope that you will enjoy your time at our school, and that you will benefit from the wide range of subjects, activities and opportunities that are on offer.

As you know, we have a great building, with large classrooms and lots of equipment and resources. We provide care and support for all of our pupils to ensure that they achieve the very best that they can during their time in the Anderson High School. We try to treat everyone equally and with respect, working hard to build a nurturing environment where our pupils feel valued and supported. We like to think there is a positive ethos within our school. In Anderson High School, we are proud of the strong relationships formed between teachers and pupils.

When you arrive in AHS, you will hear about our school motto “Dö weel and persevere” and our four values of Perseverance, Ambition, Respect and Responsibility. We will discuss our motto and values with you when you start in S1.

Along with your primary Head Teachers, Ms Jamieson and I are thinking about how to help you get to know AHS. We hope this information booklet will help a little.

This is an exciting time for you, as you move to secondary school, and I wish you all the very best in S1.

Best wishes,

Robin Calder
Head Teacher



Who's who?

Head Teacher



My name is Mr Robin Calder and I am the Head Teacher of the Anderson High School. I have a responsibility for everyone in the school, looking after them and keeping them safe. You will see me around the school every day. I often visit your classes to see how you are getting on. We have regular assemblies in the School Hall where I like to meet with the different year groups. I am looking forward to getting to know you when you start in the Anderson High School.

Depute Head Teacher



My name is Ms AnnMarie Jamieson and I am the Depute Head Teacher for S1 and S2. It is my job to look after all the pupils in S1 and S2, making sure they feel safe and supported. You will see me every day around the school, in your area at interval and lunch times. I like to visit S1 classes so that I can speak with my pupils about their learning. You will see me during assemblies where I have the opportunity to speak to you all.

Pupil Support Teachers



Mr Michael Boxwell



Mr Adam Johnson



Mrs Kerri Redfern



Mr Michael
Manson

There are 5 Pupil Support Teachers at the Anderson High School. You will all be assigned one Pupil Support Teacher. Their job is to support you with any worries or concerns that you may have, whether that is to do with your subjects or anything else that is worrying you. You will meet with them one period a week during your Personal and Social Education (PSE) lesson and you can arrange to meet them in Room 0.07 next to the School Office.

Support for Learning



Mrs Marnie Harpe



Mrs Gillian Maxwell

Mrs Harpe, Depute for Support for Learning and our three Principal Teachers of Support for Learning- Mr Nathan Davies, Mrs Gillian Maxwell and Miss Leanne Campbell- lead the support for learning provision in Anderson High School and arrange support for pupils in many different ways, both in and out of the classroom in small groups.

The secondary school curriculum is different to primary schools. This means that for some pupils, the help they need to do their best work might be different to the help they needed in primary school. Your primary school will already have let Anderson High School staff know if you have any learning support needs.

To help all pupils do their best work, there are often Support for Learning Teachers and Learning Support Workers in classes as well as a teacher. Their job is to help the teacher make sure everyone gets the help they need. They can also help individual pupils with reading and writing tasks in class and sometimes outside of class in a small group or one to one.

When you are in class, you can ask your Subject Teacher, the Support for Learning Teacher and the Learning Support Worker for help if you need it.

Additional to the support for learning needs, there are staff who specialise in supporting anyone experiencing social and emotional challenges. All you need to do is talk to your Pupil Support teacher if you feel you would like to know more about this. We're all here to help with whatever you need.

AHS Youth Worker

Jamie Maguire and Keira Tulloch are Youth Workers based in the Anderson High School.

They are involved in the delivery of the Kings Trust Programme from S3 onwards.

They also deliver small group and one to one support to identified pupils.



Jamie Maguire



Keira Tulloch

Moving from P7 to S1

We know that moving from P7 to S1 can be both an exciting but also nerve-wracking time. You will have many questions about the school and about your classes. The purpose of this booklet is to try to answer some of those questions you may have.

We want to make your move from P7 to S1 as smooth as possible. Some of the things that you will be worried about, other pupils will be worried about as well. It is important that you know we are all there to support and help you during your first few weeks - not just teachers but other pupils as well. Your P7 teacher will be helping you with your questions this term.



Pupils on an outdoor activity day

Will I get to visit AHS before I start school?

Before you start at AHS, we will try to make sure that you have at least one visit to the school. When you visit, we will show you things such as the S1 area; where to leave your bags and jackets; where the toilets are; where the tuckshop is and how to get lunch. We will also give you a tour of the school.

What will happen on my first day of school?

On your first day of lessons, Ms Jamieson will meet you at 0850 in the School Hall. You will all have your timetables and we will help you get to your classes all day.

The School Day

Monday – Thursday			Friday	
Period 1	0850 - 0940	50 mins	0850 - 0940	50 mins
Period 2	0940 - 1030	50 mins	0940 - 1030	50 mins
Interval	1030 - 1050	20 mins	1030 - 1050	20 mins
Period 3	1050 - 1140	50 mins	1050 - 1140	50 mins
Period 4	1140 - 1230	50 mins	1140 - 1230	50 mins
Lunchtime	1230 - 1315	45 mins	1230 - 1315	45 mins
Period 5	1315 - 1405	50 mins	1315 - 1405	50 mins
Period 6	1405 - 1455	50 mins		
Period 7	1455 – 1545	50 mins		

The school has a bell that rings at the start and end of the day, the start and end of every lesson and the start and end of interval and lunchtime. You cannot miss it as it is very loud!

We also have a tannoy system which is used daily. The Head Teacher or one of the Depute Head Teachers will read out important notices. You must stop the work you are doing in class to listen to these notices.

What class will I be in?

We know that many of you will be wondering what class you have been placed in and if you will know anyone there.

Please don't worry. Everyone moving from P7 in to S1 will be feeling the same. You will very quickly get to know the people in your class and make friends.



Classroom for non-practical subjects

Organising Classes

- We split our subjects into **non-practical classes** and **practical classes**.
- **Practical classes** are those subjects where you will need to move around a classroom or lab as you could be carrying out activities such as conducting science experiments, cooking, making things in a workshop. These classes will have a maximum of 20 pupils.
- **Non-practical classes** are those lessons where you will be in a classroom rather than a workshop working on written activities, taking part in discussions, group work. So, subjects such as English or Maths are classed as non-practical subjects.



What will the name of my class be?

- There are **6 non-practical** classes known as **1A-1F**.
- You will be placed in one of these 6 classes for Pupil Support, Personal and Social Education and non-practical subjects such as English and Social Subjects.
- There are **9 practical** classes known as **1P1-1P8**.
- You will be placed in one of these 9 classes for practical subjects such as ICT and Science.
- This means that you will end up with a class name such as **1A 1P1** or **1E 1P8**.



Art & Design classroom (practical class)

What subjects will I study?

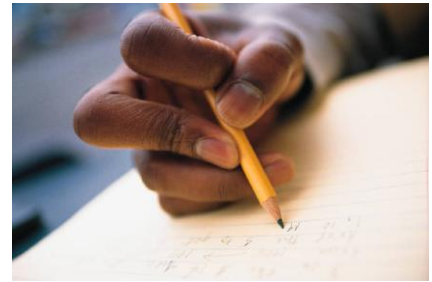
A big difference between Anderson High School and your primary school is that you will now be studying approximately **THIRTEEN SUBJECTS** with a different room and a different teacher for each one.

The subjects you will study in your **1A to 1F classes** are:

- Computing
- English
- French and German
- PSE (Personal and Social Education)
- RMPS (Religious Moral and Philosophical Studies)
- Social Subjects (Geography, History and Modern Studies)
- Music

The subjects you will study in your **1P1 to 1P8 classes** are:

- Art & Design
- Craft Design and Technology (CDT)
- Home Economics
- Information & Communication Technology (ICT)
- Physical Education (PE)
- Science (Biology, Chemistry and Physics)



In **Maths**, most pupils are placed in mixed ability classes according to transition information from primary schools.

What happens if I want individual music tuition?

Your primary school will inform our Music Department about who currently gets tuition. The lessons are allocated by the local authority and last for 25 minutes once per week. Please contact Ms Noelle Henderson, Tel: 01595 744013 at Hayfield House if you require more information.

What if I get lost?

Some of you could be worrying about moving up to the Anderson High School and whether you will manage to find your way around. You might be worrying about what to do if you get lost.

Please don't worry. Everybody knows how it feels to be in the school for the first time and we are all there to help you find your way to your classes.

To help you, there is a plan of the school in the back of this booklet, which shows you where to find the different departments.

Finding your way around is very straightforward - there is the ground floor and then three floors above that. The different departments on each floor are wrapped around a central atrium.



Front entrance looking up to all floors

Just inside the front door there is the main **School Office**. Any visitors to the school will check in here.



School Office reception area

If you need to leave the building during the school day or if you come in late you should check in at the **Pupil Support Department** which is also on the ground floor (room 0.07).

In every stairwell you will find a board which lists the different departments and which floor they are on. It is easy to tell which floor you are on if you look at these boards as the floor you are currently on will be highlighted clearly.

As well, there are green emergency exit signs hanging from the roof at each stairwell. Look out for them and you will know where the doors are that let you find the stairs that go up and down to the different floors.



Sign for finding departments



Emergency exit sign and entrance to stairwells

What about my timetable?

- You will be given an individual timetable prior to your two day visit in June and a finalised timetable will be sent to you towards the end of the summer holidays.
- This timetable will show you period by period what subject you have, what teacher you have and the number of the room they are in.

Sample timetable

	1	2	3	4	5	6	7
Monday	Art & Design C/E Mrs Kelly 3.26	Science C/E Mr Mc Ginlay 2.26	English C/E Mrs Crossan 3.16	RME C/E Mr Redman 3.05	Mathematics C/E Mr Irvine 2.37	French C/E Mrs D'Eath 2.06	Music C/E Mrs Leslie 0.15
Tuesday	English C/E Mrs Crossan 3.16	Music C/E Mrs Leslie 1.12	German C/E Mrs Pearson 2.08	Mathematics C/E Mr Irvine 2.37	CDT C/E Mr Walls 1.24	Science C/E Mr Mc Ginlay 2.26	Physical Education C/E Ms Leask 60/40
Wednesday	Social Subjects C/E Mr Gomes 3.29	English C/E Mr Dort 3.13	RME C/E Mr Redman 3.05	French C/E Mrs Coyne 2.07	Mathematics C/E Mr Irvine 2.37	Business IT C/E Mrs Pearson 1.33	Science C/E Mr Mc Ginlay 2.26
Thursday	Home Economics C/E Miss Murray 1.16	Home Economics C/E Miss Murray 1.16	PSE C/E Mr Regan 3.08	English C/E Mrs Crossan 3.16	Computing C/E Mr Ross 1.36	Mathematics C/E Mr Irvine 2.37	Social Subjects C/E Mr Gomes 3.29
	1	2	3	4	5		
Friday	CDT C/E Mr Robertson 0.37	Art & Design C/E Mrs Kelly 3.26	German C/E Mrs Pearson 2.08	Physical Education C/E Mr Smith G. Hall	Social Subjects C/E Mr Gomes 3.29		

- On every classroom door you will be able to see the room number. You can check that number with the one on your timetable to see if you have found the correct classroom.
- Keep your timetable safe. If you have a smartphone it is a good idea to take a photo of it so that you have a copy stored there.
- Don't worry if you lose your timetable as you can get another copy of it from the School Office or from your Pupil Support Teacher.

Does it get busy in the corridors?

- In between lessons as pupils move from class to class the corridors can get busy.
- To help with that we ask pupils to **KEEP LEFT** when moving through corridors and up and down stairs.
- This certainly helps stop the corridors from feeling overcrowded.



School corridor

Where is the Physical Education Department?

Your PE lessons take place within Clickimin Leisure Centre. The Anderson High School has use of those areas of Clickimin being used for PE during school hours.

The period you have PE you must make your way across to Clickimin as quickly as possible in order to get changed and start your lesson promptly.

Your PE teacher will give you plenty of time at the end of the lesson to change and make your way back to the Anderson High School for the start of your next lesson.



What happens at interval and lunchtimes?

You are really lucky. S1 have their own designated area in the School Hall that they can go to before school starts at 0850 and at interval and lunchtime. You will see the School Hall straight ahead of you as you come in to school through the main door.

You can also use the Lower and Upper Canteen areas at interval times as there are plenty of seats there too.



Entrance to School Hall

You are allowed to leave the school grounds for your interval and lunch but you must make sure you are back in school on time for your classes.

You will be able to leave your schoolbag and jacket in the School Hall either in the bag boxes provided or underneath the benches. On the ground floor near to Lower Dining, you also have access to pegs where you can hang your jacket. Some pupils prefer to keep their jacket and school bag with them at all times.



Bag boxes



Pegs in Lower Dining area

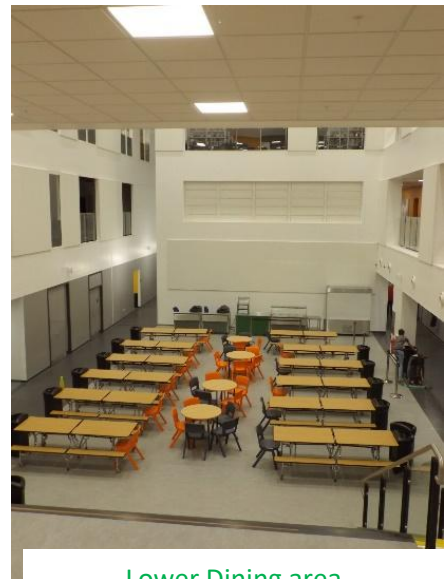
In your area there will be a Supervisory Assistant who is there to look after you at interval and lunchtimes and keep you safe. They will remind you that when in the area you must sit down on the benches provided. With over 120 pupils coming in to S1 we cannot have pupils standing or running around in the area. We need you all to be seated to keep you safe.

Interval

At interval, there are snacks and drinks sold in the Upper and Lower Dining areas.



Upper Dining area



Lower Dining area

Lunchtime

At lunchtime, there are main meals and snacks on sale in the Upper and Lower Dining areas.

In Lower Dining you will be able to choose from a variety of sandwiches, salad boxes, pasta boxes and soup.

In Upper Dining you can buy filled baguettes, baked potatoes and choose from two different hot cooked meals every day. Do not worry if you have special dietary requirements. Our School Canteen can help you with that.

You pay for your food at a till just as you would in a cafe. Payment can be made by using ParentPay which links in through your Young Scot Card, or by cash.



S1 are released for lunch at 1220

S2/3 are released for lunch at 1225

S4/5/6 are released for lunch at 1230

Are there any activities I can take part in at lunchtime?

We offer a range of activities at lunchtime that you can take part in:

- S1/2 Football in the 60/40
- Music Groups
- Table Tennis Club
- Chess
- Maths Club
- Anderson Makerspace
- Mindful Colouring
- Scripture Union
- Young Creatives



60/40 facility

The School Library is open every interval and lunchtime if you are looking for a quiet space to read.

They also offer a range of other activities such as board games and craft activities.



School Library

What if I struggle with interval and lunchtimes?

Some pupils do not like being in busy social areas at interval and lunchtime.

If you are finding this difficult you can speak to your Pupil Support Teacher about this. The Library is an excellent place to go if you are looking for some quiet space. If you are already being supported by the Support for Learning team you may be able to gain access to one of the Support for Learning rooms at interval and lunchtime.

If you are not supported by the Support for Learning team but are finding interval and lunchtimes difficult, you can speak to the Support for Learning team about possibly having access to space within their department.

Here, you may wish to have your lunch, play a game as part of a group or chat quietly to a friend or friends.

What about mobile phones?

At the Anderson High School all our pupils follow our policy called “**Digital Down Time.**”

This means that:

1. Mobile phones and portable electronic devices, including headphones/earphones should be out of sight as you move through the corridors in the school.
2. You should switch off your device and place it in the phone pockets provided in every classroom on entering the room. Or, alternatively your class teacher will ask you to switch off your device and put it away in your school bag.
3. Mobile phones and portable electronic devices can only be used in class at the discretion of the teacher as we recognise they can play a positive role in teaching and learning.
4. You can use mobile phones and portable electronic devices at interval and lunchtime but at no other times.



Phone pockets in classrooms

Questions that are often asked

What happens if I come to school by bus?

If you live outside Lerwick, buses are provided for you.

Buses drop you off and pick you up at the bus park at the front of the school. There are clearly marked bays for every bus. PLEASE TAKE CARE.

All enquiries regarding transport should be directed to Transport Planning, telephone 01595 744886.



AHS bus park

What happens if I cycle to school?

There are cycle racks at the front entrance of the school. You should chain your cycle as it is in an open area.

Make sure that you TAKE CARE at all times when walking or cycling to school and especially if you are in a group.



Cycle racks at front of school

What equipment do I need to take with me?

You must bring a pencil and pen to write with and you must have a strong school bag for protecting your books. You will also find it useful to have a ruler and coloured pencils or felt-tip pens.

Pupil Diaries are available from the School Office if you want to use this as a way to record when homework is due in your subjects. Alternatively, class teachers will let you record your homework on your smartphones.

Your Home Economics Teacher will give you a letter, at your first lesson, explaining what you need to take to school for Home Economics lessons.

Once you know what days you have PE you will need to remember to bring your PE kit: trainers, shorts or jogging trousers and a change of t-shirt.

What do I do if I need to leave the school for an appointment?

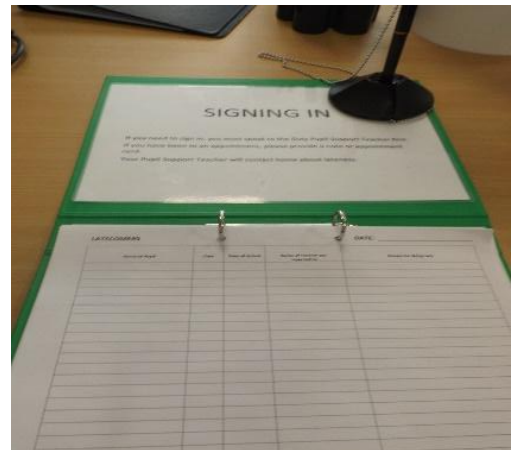
If you need to leave the school at any point, for example because you have a dentist appointment, you **MUST** sign out so that we know where you are.

How do I sign out?

To sign out, you go to the Pupil Support Department and one of the Pupil Support Teachers will sign you out in the signing out/in folder. They will note the time you leave and where you are going.

You should bring a dental card or note from home and show this to a Pupil Support Teacher.

When you return to school on the same day, you sign in by writing the time you return in the same folder.



What happens if I feel unwell?

If you are feeling poorly you must go to the Pupil Support Department and tell the Pupil Support Teacher on duty, who will contact your parent/carer before signing you out.

If you feel better later in the day and return to school, sign back in using the signing out/in folder in Pupil Support.

What happens if I arrive late?

It is important that you are always in school on time. If for any reason you are late, you must sign in at Pupil Support before going to class.

If it is **after 0930**, bring a **note** from your parent/carer explaining why you are late. Alternatively, a telephone call to the School Office from your parent/carer would be acceptable.

What happens if I am absent from school?

If you are **absent** from school, your parent/carer should phone the School Office before 0930 every day you are off to inform the school why you are absent.

Pupil Support staff continually check both pupil latecoming and absences and will be in touch with parents/carers by phone and/or letter if they have any concerns.

If you are going to be absent for an extended period of time then Pupil Support will organise for work to be sent home for you.

Final Note

This is an exciting time for you all. We are all really looking forward to meeting you and helping you to settle in to your secondary school. Just remember we are there to support you.

Also remember that every pupil coming in to S1 is nervous. The worries that you have will be the same worries that other pupils are having. Everyone is in the same boat.

There are lots of people you can turn to for help – Subject Teachers, Pupil Support Teacher, your Depute Head Teacher, other pupils from older year groups.

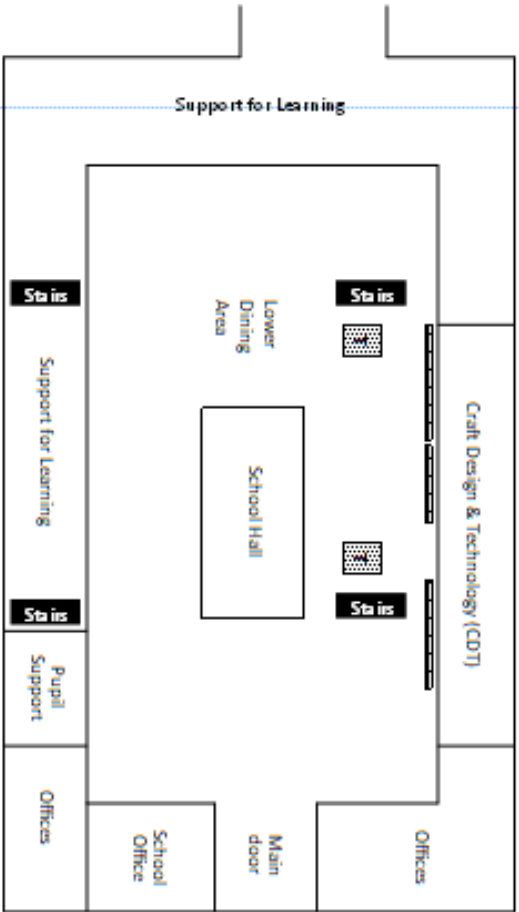
Enjoy your time here. Make the most of all the different opportunities that will be available to you.

Dö weel and persevere

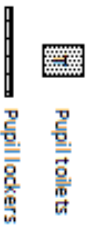
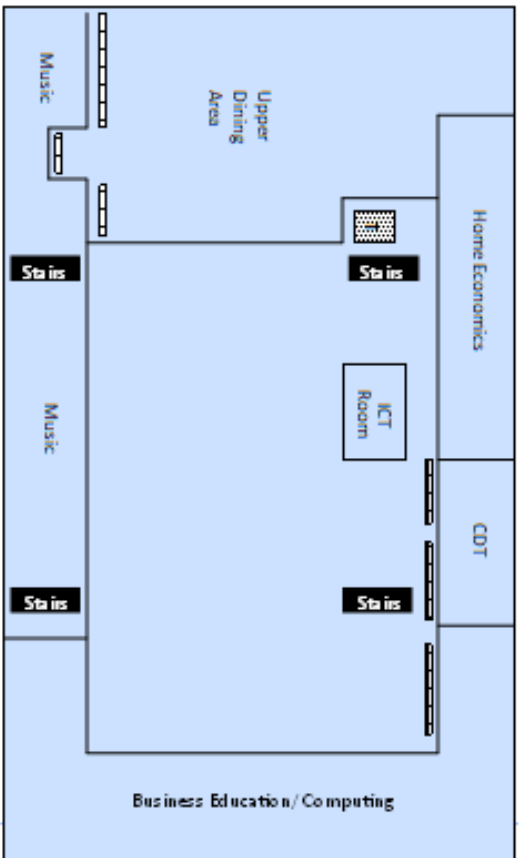


FLOOR PLAN OF ANDERSON HIGH SCHOOL

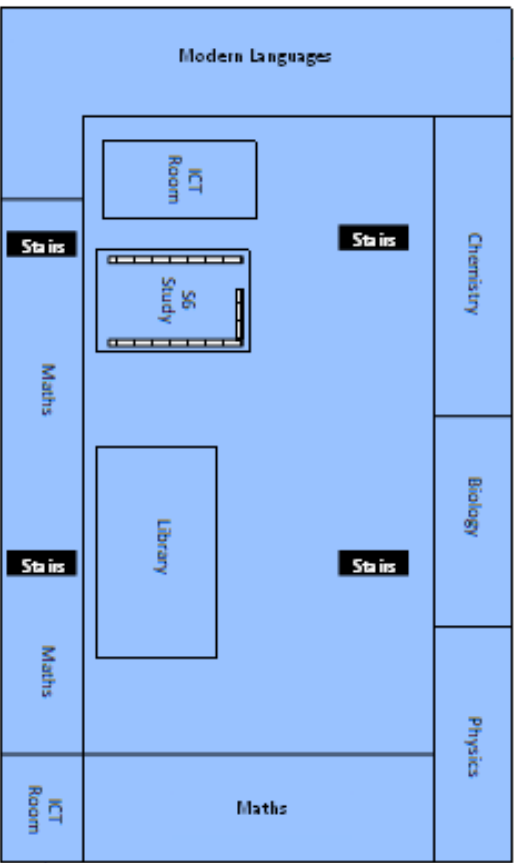
Ground Floor



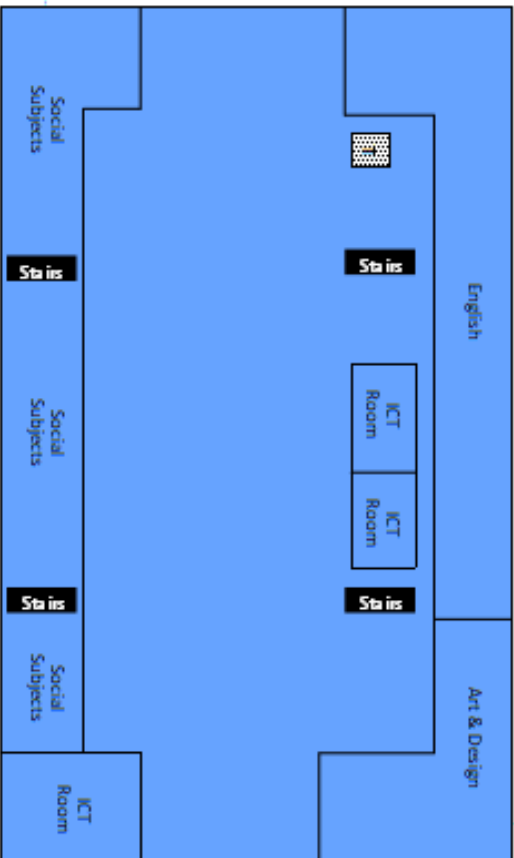
First Floor



Second Floor



Third Floor



FRONT OF SCHOOL