



National 5 Mathematics



National 5 Mathematics is externally assessed and is graded A – D.



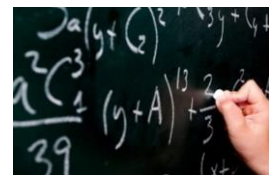
ENTRY LEVEL – What do I need to do it?

The level and course in mathematics studied in S3 was preparation for the N5 Mathematics Course.



COURSE CONTENT – What will I learn?

National 5 Mathematics



Course structure

You will acquire and apply operational skills necessary for developing mathematical ideas through symbolic representation and diagrams. You will select and apply mathematical techniques and will develop your understanding of the interdependencies within mathematics. You will develop mathematical reasoning skills and will gain experience in making informed decisions.

(For more information go to: <http://www.sqa.org.uk/sqa/45752.html>)

Mathematics: Expressions and Formulae (National 5)

The general aim of this Unit is to develop skills linked to mathematical expressions and formulae. These include the manipulation of abstract terms, the simplification of expressions and the evaluation of formulae. The Outcomes cover aspects of number, algebra, geometry and reasoning.

Mathematics: Relationships (National 5)

The general aim of this Unit is to develop skills linked to mathematical relationships. These include solving and manipulating equations, working with graphs and carrying out calculations on the lengths and angles of shapes. The Outcomes cover aspects of algebra, geometry, trigonometry and reasoning.

Mathematics: Applications (National 5)

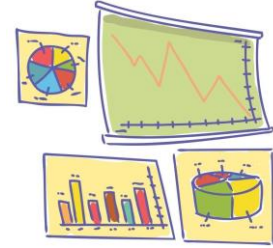
The general aim of this Unit is to develop skills linked to applications of mathematics. These include using trigonometry, geometry, number processes and statistics within real-life contexts. The Outcomes cover aspects of these skills and skills in reasoning.



TEACHING METHODS – What will I do?

Teaching methods will include:

- Class discussion
- Written tasks including research
- Group work
- Role play
- Giving presentations (individual or group)



ASSESSMENT: National 5 Mathematics

You will sit a formal examination. The course assessment will consist of two papers:

Component	Paper 1 (Non-Calculator)	Paper 2 (Calculator)
Time	1hr	1h 30 min
Marks	40	50

HOMEWORK

You will be given regular homework. Homework will be communicated to you in class and through your student calendar. Extra study will also be required at assessment times.



PROGRESSION IN THE SENIOR PHASE

Students who pass National 5 Mathematics with an A or B grade may progress to Higher Mathematics.



COSTS

This course carries no cost implication. A fee will be charged to replace any lost books or printed materials. You will be expected to bring a calculator, pen/pencil, and ruler to every lesson.