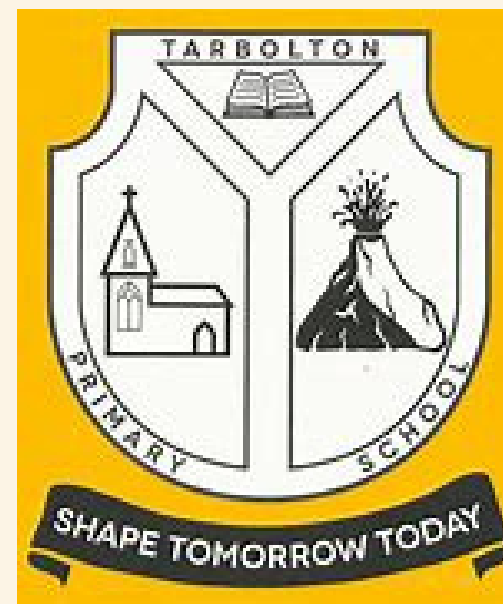
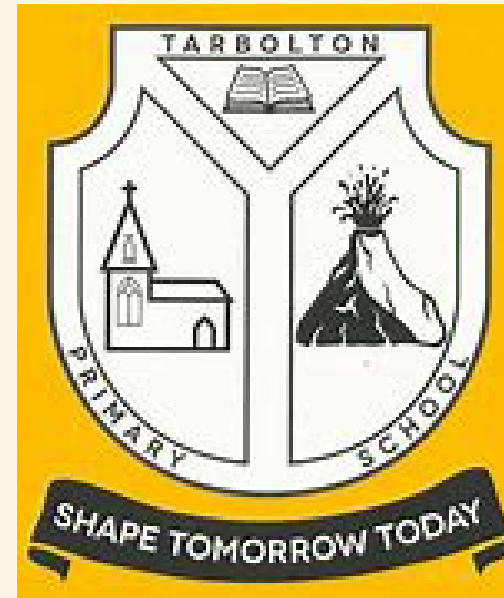




# N5 TO PRIMARY 1 TRANSITION 2026



**MRS ROSS**  
**HEAD TEACHER**



**MRS LOGAN**  
**DEPUTE HEAD TEACHER**

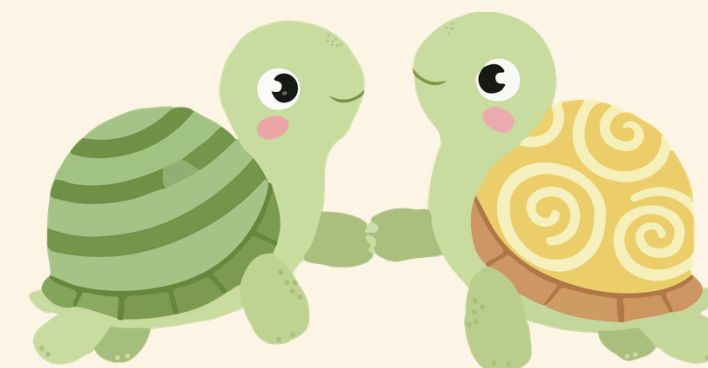


# MEET MY BUDDY

The children will meet their buddies for the first time during the day in the nursery. The buddies will come and play with them in the playroom for a short session to get to know them. Look out for a photo on their Seesaw Journal to introduce you to their buddy!

**Monday 27<sup>th</sup> April 9.30-10.00am- Bumble Bees, Butterflies & Caterpillars**

**Wednesday 29<sup>th</sup> April 9.15-9.45am- Dragonflies, Fireflies & Glow Worms**



# BUDDY VISIT TO THE SCHOOL LIBRARY



Children will have the opportunity to visit the school library with their P6 buddy to get to know each other a bit more whilst taking part in some reading and other fun activities. Children coming from other nurseries will need to be accompanied by an adult that they are familiar with.

If your child does not attend Tarbolton EYC please call the school office on 01292 612152 to let us know which session you would like to attend with your child.

**Tuesday 5th May 2.00-2.30pm- Bumble Bees, Butterflies & Caterpillars**

**Friday 8th May 2.00-2.30pm - Dragonflies, Fireflies & Glow Worms**

# MONDAY 11TH – 22<sup>ND</sup> MAY

If your child is currently at another nursery, during this time you are very welcome to contact Mrs Logan (DHT) 01292 612152 to arrange a visit for your child to come and join our other pre-school children in our nursery for a 1 hour stay and play session. Your child will be required to have a familiar adult stay with them for this session.



# MINI COMMONWEALTH GAMES

**Wednesday 20<sup>th</sup> May 1.30-2.30pm**

N5 children will join their P6 buddies and the current P1 classes to take part in a Mini Commonwealth Games afternoon.

The P6 buddies will plan exciting events and activities for everyone to take part in. All children to wear sports clothes.

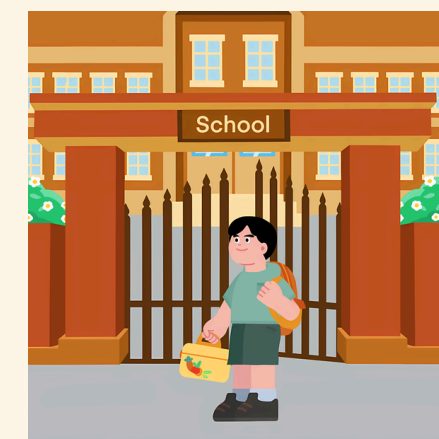
If your child does not currently attend our EYC, please call the school office to let us know if your child will be attending this event.



# N5 CHILDREN THROUGH THE SCHOOL GATE

**Week beginning Monday 8<sup>th</sup> June**

Nursery children who are going into P1 after the holidays should meet their Key Worker at the playground gate (next to outdoor changing rooms) to walk into the nursery through the school playground. This will give children the opportunity to experience going in through the gate in the morning before they do this in August. Parents will sign their child in at the gate and they will walk with the rest of their group and key worker. This will continue until the end of term.



# SPECIAL DELIVERY

Week beginning Monday 8<sup>th</sup> June

Look out for a little delivery from the P6 buddies this week!



SPECIAL  
DELIVERY

# P1 PARENT'S INFORMATION SESSION



**Thursday 18<sup>th</sup> June 2.15-3.00pm**

We are delighted to invite you all into our school for our P1 Parent Information Session. Please come to the community entrance and a member of staff will be able to show you to our hall. This session will be led by a member of the senior leadership team and the Primary 1 class teacher. This is where we will give you all the information that you will need for your child starting school and you will have the opportunity to ask any questions and chat with other parents.

**This session is for parents only.**

# INFORMAL MEET & PLAY IN THE PLAYGROUND

Thursday 18<sup>th</sup> June 3.15-4.00pm



We would love to invite our new parents and our new P1 children along to our playground at the end of the school day for an informal meet and play. There will be some play equipment in the playground for the children and some refreshments for everyone. This will provide a further opportunity for the parents and children to meet up with one another. Parents and children should gather at the Community entrance of the school where a member of staff will open the doors at **3.15pm**.

On this day at **3.45pm** we will offer a short tour of our P1 classroom, to allow new P1 parents and those children coming from other nurseries an opportunity to see how it is set up.

# TEDDY BEARS PICNIC

**Friday 19<sup>th</sup> June 2.00-2.45pm**

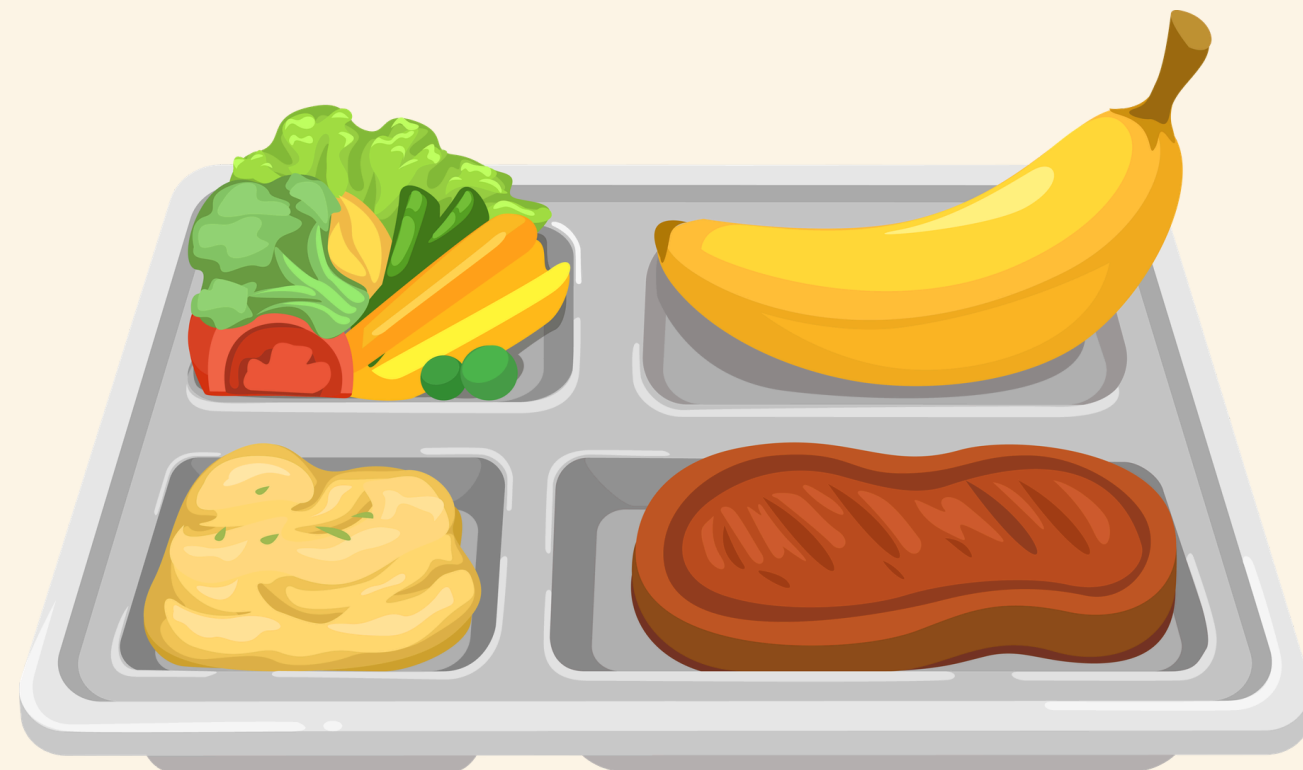
Children are invited to bring their favourite teddy along on this day (in a labelled bag) to enjoy an afternoon snack in the school playground. The children will be joined by their buddy for next year and the P1 teacher will stop by for a visit.



# LUNCH HALL PRACTISE

**Tuesday 23<sup>rd</sup> June at 12.00pm**

The children will be accompanied by their P6 buddies to practise taking a tray and collecting their lunch from the hatch. Their buddies will assist them in carrying their lunch safely to their seat and ensure they know where to put their dishes and trays when finished.



# BUMP UP AFTERNOON

Wednesday 24<sup>th</sup> June

All children will visit their new P1 classroom from 2.00–3.00pm. Children will be dismissed from their new classroom door.



# QUESTIONS

**If you have any questions please do not hesitate to ask one of the key workers in the nursery or call the school office.**

