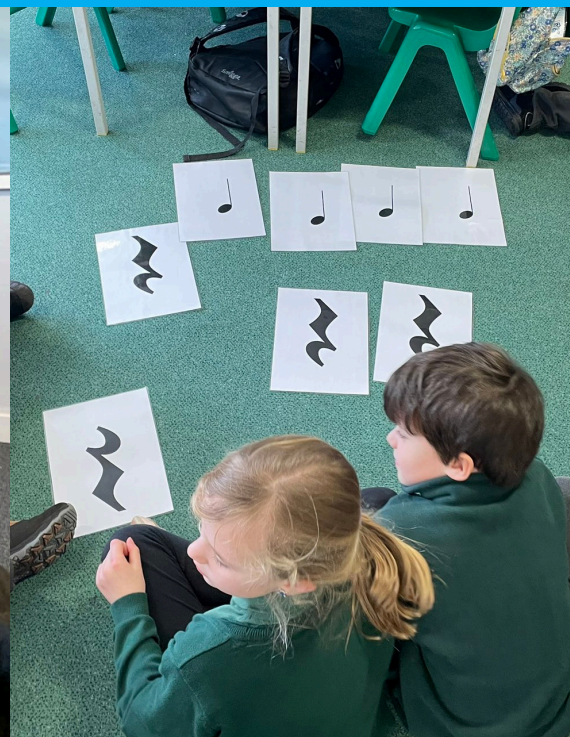


SOUTH AYRSHIRE COUNCIL: INSTRUMENTAL MUSIC SERVICE YMI CASE STUDY



Strategic Music Provision: Integrating IMS and YMI

Instrumental Music Service (IMS) and Youth Music Initiative (YMI) have been strategically aligned to maximise access to high-quality music-making opportunities in schools. Budget pressures over time led to a reduction in the range of YMI projects. Additional Scottish Government funding to remove charges for instrumental instruction and widen access has created an opportunity for innovation and expansion.



<https://blogs.glowscotland.org.uk/sa/sacims/>



South Ayrshire Instrumental Music Service



@SAMusicService



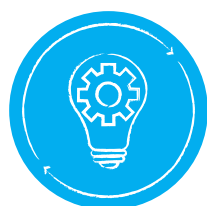
Strategic RESPONSE



Maintaining Core IMS Deployment:

- individual and small group tuition across all schools.
- authority-wide orchestras, bands, ensembles and choirs, rehearsing centrally in the evenings

This **ensures continuity** and **supports progression** for learners already engaged in instrumental music.

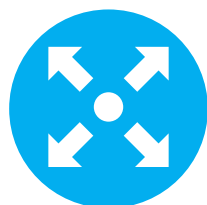


Innovative Development:

New YMI project - Music Heroes

- targeted for **Primary 3 Pupils**.
- focus on **singing and musicianship** to build foundational skills in pitch, pulse and rhythm.

Providing a universal baseline in musicianship, ensuring all children develop core skills before progressing to instruments. This supports **long-term musical progression and confidence**.



Broadening access (new SG funding):

New Whole-Class Instrumental Learning projects - The Next Generation

- delivered by experienced music instructors across the full school year
- prioritising schools in areas of poverty and rural isolation

Building confidence and **broadening access** to instrumental learning.

The key benefits of this strategic approach to provision means we can **target support** for children in areas of **poverty and rural isolation**. Whole-class learning makes music accessible to all. Our foundational YMI **Music Heroes** project develops core skills, supporting **long-term musical progression** and confidence. Using additional Scottish Government funding to **expand rather than replace** services allows for **growth without disruption**. We have improved pathways of progression - through whole-class experiences to small group tuition and ensemble participation. This encourages **ongoing engagement** and **musical progression**. We foster **collaboration between IMS and YMI teams**, strengthening the overall service, ensuring **high-quality teaching** and **professional development** opportunities.

This model allows for **ongoing adaptation** as funding, needs, and priorities evolve. Our proactive approach to change management ensures the service remains **responsive and resilient**.