

HS HEATHFIELD PRIMARY SCHOOL AND EYC



In our EYC, extended learning facility and mainstream classrooms we:

- Provide high-quality teaching and learning to ensure learners are literate and numerate.
- Encourage opportunities to develop problem solvers who use creative thinking across the curriculum and apply these skills for learning life and work.
- Be responsive to individual needs in a safe, stimulating and inclusive culture where all children thrive.

SUPPORTIVE

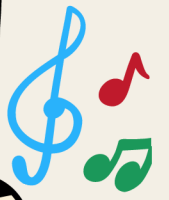
AMBITIOUS

INCLUSIVE

We are committed to giving all pupils a voice and ensure regular opportunities to share views, opinions and ideas through our people groups.

Wellbeing and Inclusion
Underpin everything we do!

We offer a wide range of clubs before, during and after school to ensure all children are able to participate and find success. Many clubs are run by pupils after completing their Junior Coaching Award and are created based on interests and promoting healthy lifestyles.



SILVER RIGHTS AWARE



We are working towards achieving our Gold RRS award.

We are a **READING SCHOOL**
Core Level Achieved 2024

GOLD
Sport Award Achieved 2024

We regularly celebrate pupils achievements recognising their strengths and abilities.



We ensure all learners foster a love of reading.



EQUITY

We celebrate diversity as well as a range of festivals and celebrations which represent the cultures and beliefs of our families. We also strive to develop aspirations for our people through our approach to the curriculum, making sure that all children feel represented.

PUPILS

To support children to develop a passion for learning, we encourage:

- Successful learners
- Confident individuals
- Effective contributors
- Responsible citizens

Who demonstrate resilience and positive attitudes.

CURRICULUM

We strive to deliver a relevant curriculum to all of our learners. We use the local context to expand thinking and deepen children's learning. We have embedded a positive, nurturing ethos and are committed to ensuring everyone is challenged and supported to meet their full potential.

PARTNERS

The school is supported through:

- Engagement
- Involvement
- Family learning
- Community and club links

Parents enhance our capacity a few in a variety of ways.

Committed to PLAY



We are committed to learning through play.

RAISING ATTAINMENT



We assess, track and monitor progress and achievement. We analyse data in order to create experiences matched to the pupils ability. Our Inclusion Team work in partnership with teachers to deliver effective interventions that meet the needs of the children.