

# DAILY PRIMARY SCHOOL



## REPORTING TO PARENTS

MAY 2024



*south*  
**AYRSHIRE**  
COUNCIL

Curriculum for Excellence is Scotland's curriculum for children and young people aged 3-18. It is designed to provide young people with the knowledge, skills and attributes they need for learning, life and work in the 21st century. It is organised in levels and the guidance makes it clear what young people need to know and be able to do at each level. Learners progress through the levels based on teacher's assessments of their achievements. Children can achieve levels as follows, but this can be different for some. **It can take 3 years or more for a learner to achieve a level.**

Early Level	Achieved in early years and P1, or later for some
First Level	Achieved at the end of P4, but earlier or later for some
Second Level	Achieved at the end of P7, but earlier or later for some
Third & Fourth Level	Achieved at the end of S1 and S3, but earlier for some.
Senior Phase	Achieved through S4 - S6 and college

Teachers will assess your child's progress **within each level** using the criteria set out in the table below. Please also see the **Appendix 1 - Four Stages of Progress Diagram**

The four stages of progress through a level	What this means
<b>Beginning to learn</b> at the new level	<ul style="list-style-type: none"> <li>Your child is beginning to experience and explore learning associated with a new CfE Level.</li> <li>Your child is beginning to experience opportunities to develop knowledge of some new key concepts and develop some skills at the new Level.</li> </ul>
<b>Making some progress</b> in learning with the level	<ul style="list-style-type: none"> <li>Your child is experiencing an increasing breadth of learning at the level.</li> <li>Your child is beginning to develop his/her knowledge and understanding of key concepts, is developing new skills and is beginning to apply this learning.</li> </ul>
<b>Making good progress</b> in learning within the level	<ul style="list-style-type: none"> <li>Your child has experienced most of the learning associated with the level.</li> <li>Your child can demonstrate a depth of knowledge and understanding in some key concepts, is developing a range of skills and can apply their learning.</li> <li>Your child is working with increasing independence.</li> </ul>
<b>Making very good progress</b> in learning with the level	<ul style="list-style-type: none"> <li>Your child has experienced almost all of the learning required at the level.</li> <li>Your child demonstrates a depth of knowledge and understanding of almost all key concepts, has developed almost all related skills and can apply their learning consistently. Your child is working independently within, and at times, beyond, the level.</li> </ul>

We report the CfE level your child has achieved. The codes used are below.

Achievement Level :	Progress between levels :
00- Not yet achieved Early Level	B - Beginning to learn at the next level
E- Achieved Early Level	S - Making some progress through the next level
01- Achieved First Level	G - Making good progress through the next level
02- Achieved Second Level	V - Making very good progress through the next level

For example, if your child is reported as **EG** then this means they have **achieved Early Level** and making **good progress** towards achieving first level.

Please see **Appendix 2 - Journeys of Progress in the Broad General Education (P1-P7)** giving an overview of where children should be at each stage in the Primary school.

### How do I know how well my child works from day to day?

Your child's teacher will record one of the following for homework, effort and behaviour:

Homework		Effort		Behaviour	
Always makes a good attempt	1	Always works conscientiously	1	Always behaves well	1
Usually makes a good attempt	2	Usually works conscientiously	2	Usually behaves well	2
Occasionally makes a good attempt	3	Making some effort but capable of more	3	Some improvement required	3
Rarely makes a good attempt	4	Rarely puts in the effort to make good progress	4	Serious concerns	4

### How can you and/or your child share views on this report with us?

We welcome your and your child's views about your child's report. A separate link will be sent for you to provide feedback. Your views will help us shape any future changes to the way in which we report children and young people's progress and achievement.

Should you wish further information, please contact the school.

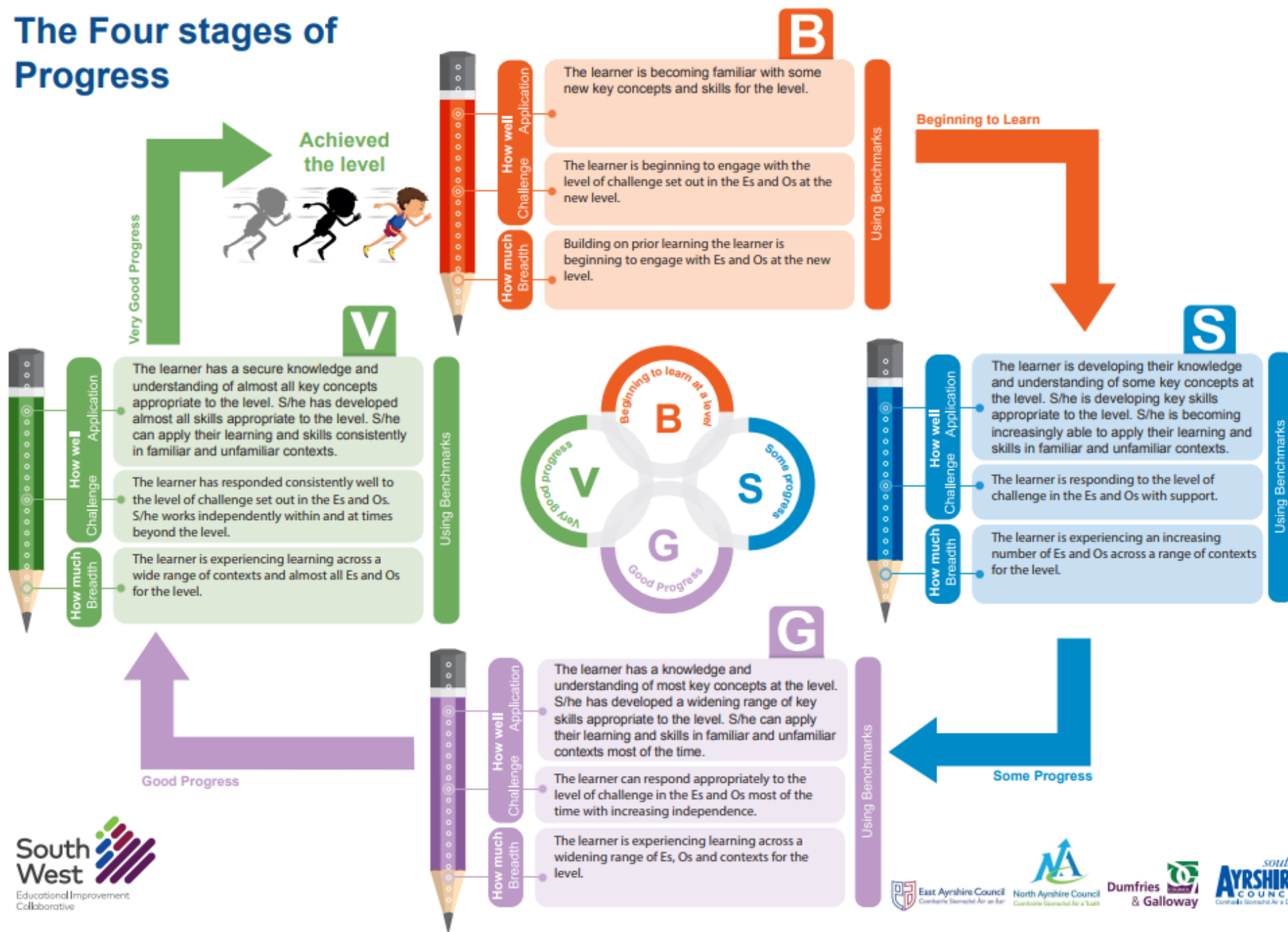
Yours sincerely

*Louise Morrison*

Head Teacher



# The Four stages of Progress



## Appendix 2 - Journeys of Progress in the Broad General Education (P1-P7)

**Learner 1 - The pupil is on track to attain in line with national expectations.**

Stage	Start of the Year	June
Pre-school	00B	00G
P1	00G	EB
P2	EB	EG
P3	EG	EV
P4	EV	1B
P5	1B	1G
P6	1G	1V
P7	1V	2B

**Learner 2 - The pupil is working at a pace which exceeds national expectations and regularly requires more challenging tasks. S/he is able to work independently.**

Stage	Start of the Year	June
Pre-school	00B	00G
P1	00G	ES
P2	ES	EG
P3	EG	EV
P4	EV	1S
P5	1S	1G
P6	1G	1V
P7	1V	2S

**Learner 3 - The pupil requires extra support and scaffolding in his/her learning**

Stage	Start of the Year	June
Pre-school	00B	00S
P1	00S	00V
P2	00V	ES
P3	ES	EG
P4	EG	EV
P5	EV	1B
P6	1B	1S
P7	1S	1G