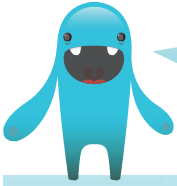


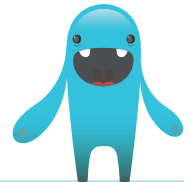
Name: _____ Date: _____



Can you solve these addition and subtraction problems? If your answer is an improper fraction, make sure you convert it to a mixed number fraction!

$1\frac{2}{3} + 2\frac{1}{3} =$	$1\frac{4}{8} + 1\frac{6}{8} =$
$3\frac{2}{6} + 1\frac{5}{6} =$	$2\frac{7}{9} + 1\frac{6}{9} =$
$3\frac{2}{7} - 2\frac{5}{7} =$	$2\frac{1}{5} - 1\frac{2}{5} =$
$1\frac{3}{5} + 4\frac{2}{5} =$	$4\frac{2}{6} - 1\frac{4}{6} =$
$3\frac{4}{7} + 3\frac{6}{7} =$	$4\frac{1}{8} - 2\frac{4}{8} =$

Now choose two of these fractions at a time to create your own addition and subtraction problems for a friend to solve. Make sure each pair of fractions has the same denominator!



$1\frac{2}{7}$	$3\frac{2}{5}$	$2\frac{6}{8}$	$1\frac{1}{6}$	$4\frac{3}{5}$	$3\frac{5}{6}$	$1\frac{5}{8}$	$4\frac{2}{8}$	$2\frac{5}{7}$	$6\frac{2}{3}$	$3\frac{2}{6}$	$1\frac{4}{5}$	$5\frac{4}{6}$	$1\frac{7}{8}$	$2\frac{1}{5}$	$5\frac{1}{3}$