

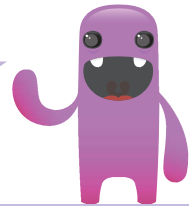
Name: _____ Date: _____



Can you solve these addition and subtraction problems? If your answer is an improper fraction, make sure you convert it to a mixed number fraction!

$1\frac{2}{3} + \frac{2}{3} = \text{---} = \text{---}$	$1\frac{4}{5} + \frac{2}{5} = \text{---} = \text{---}$	$2\frac{1}{3} + \frac{2}{3} = \text{---} = \text{---}$
$2\frac{3}{4} - \frac{2}{4} = \text{---}$	$1\frac{5}{7} + \frac{4}{7} = \text{---} = \text{---}$	$1\frac{3}{10} - \frac{6}{10} = \text{---}$
$1\frac{4}{6} + \frac{3}{6} = \text{---} = \text{---}$	$1\frac{5}{8} + \frac{2}{8} = \text{---} = \text{---}$	$2\frac{3}{5} + \frac{3}{5} = \text{---} = \text{---}$
$2\frac{3}{9} - \frac{7}{9} = \text{---} = \text{---}$	$1\frac{4}{12} - \frac{11}{12} = \text{---}$	$2\frac{7}{10} + \frac{6}{10} = \text{---} = \text{---}$

Now choose two of these fractions at a time to create your own addition and subtraction problems for a friend to solve. Make sure each pair of fractions has the same denominator!



$1\frac{2}{5}$	$\frac{3}{6}$	$2\frac{4}{6}$	$\frac{4}{5}$	$1\frac{2}{8}$	$\frac{3}{4}$	$2\frac{3}{5}$	$\frac{5}{8}$
$\frac{7}{8}$	$1\frac{1}{4}$	$\frac{3}{5}$	$2\frac{6}{8}$	$\frac{5}{6}$	$2\frac{2}{10}$	$\frac{9}{10}$	$1\frac{5}{6}$