

Parental controls guide

PlayStation Network

Parental Controls information

Type of guide

Entertainment & Search engines

Features and Benefits

Although you must be 18 to use the PS Network, you can create a sub-account for your child that is linked to your account and have full control over the restrictions placed on this sub-account restricting how they interact on the platform.

What specific content can I restrict?



Inappropriate content



Browser access



Game ratings



Chatting



Privacy

What do I need?

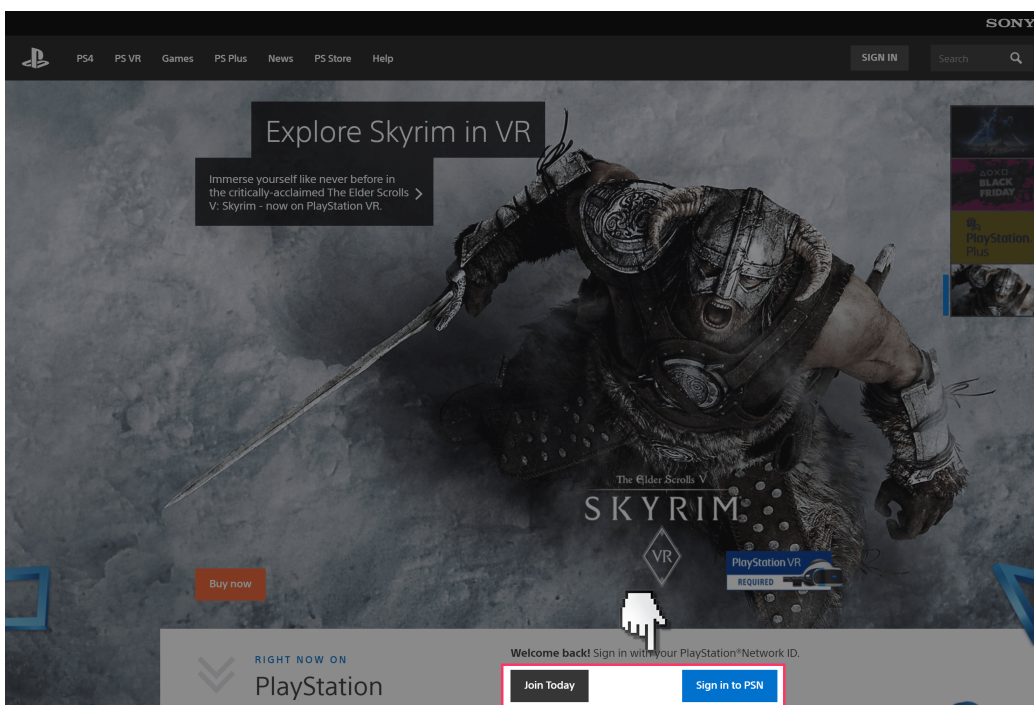
A web browser to set up a sub-account and not a PlayStation device. You will need to set up a parent/master PlayStation Network account that we will use to create a sub-account from.

PlayStation Network

Step by step guide

1

Go to www.playstation.com if you need to create a parental/master PlayStation Network account then click on “Join Today” and follow the steps otherwise click on “Sign in to PSN”.

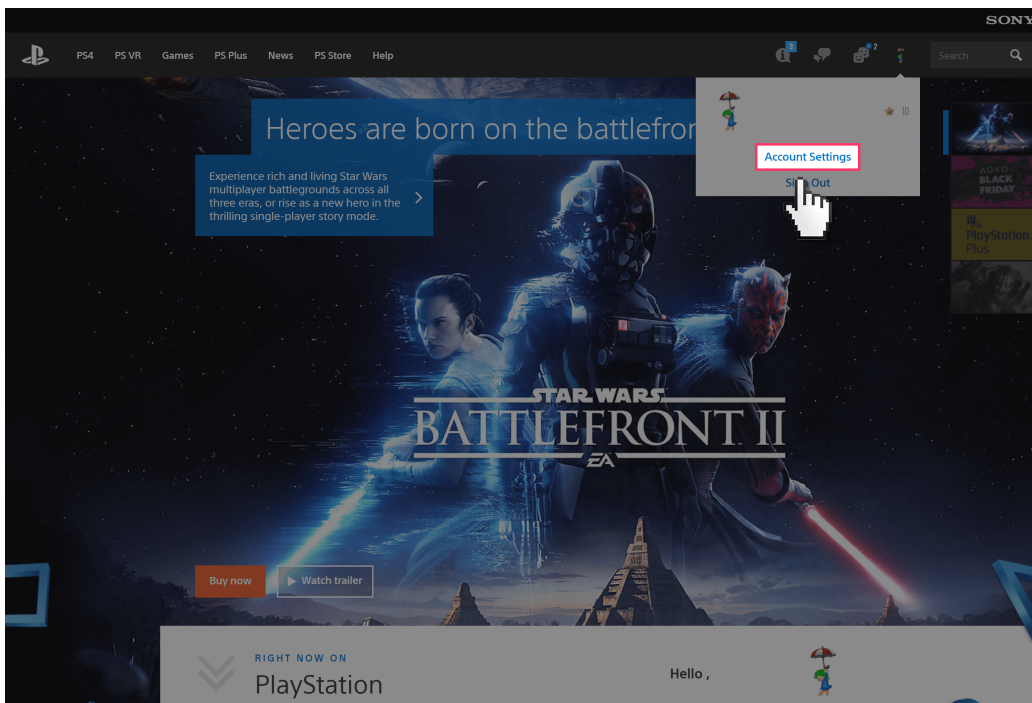


PlayStation Network

Step by step guide

2

Once signed in click on the link to “Account Settings” and then confirm your log in details.

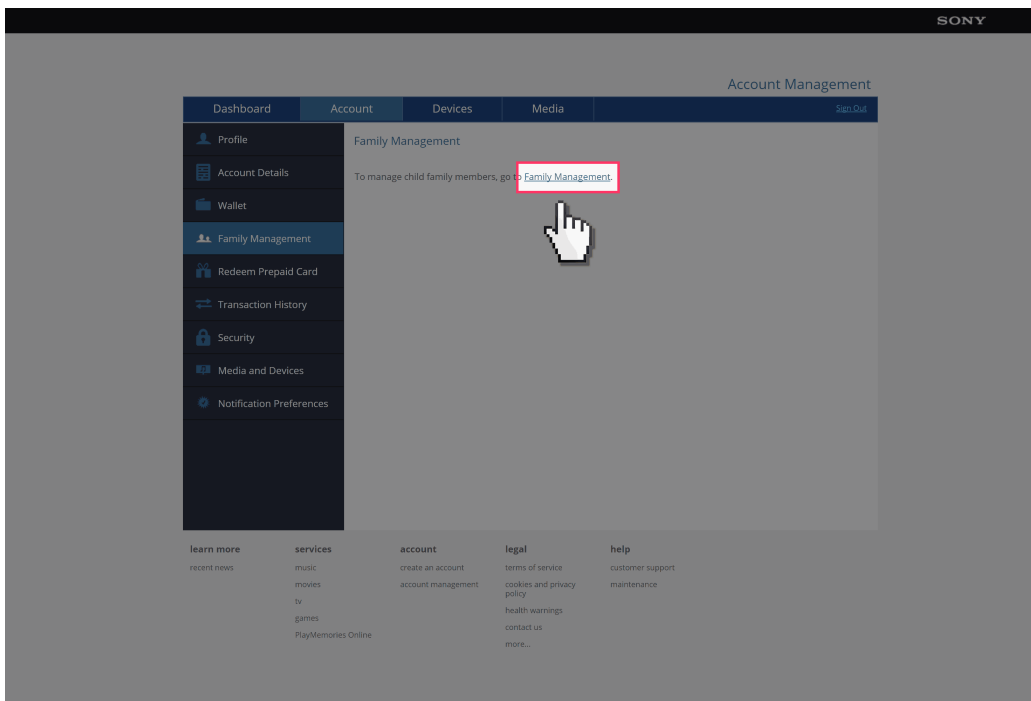


PlayStation Network

Step by step guide

3

Select the “Family Management” tab and then click on “Family Management”. Click “OK” to confirm.

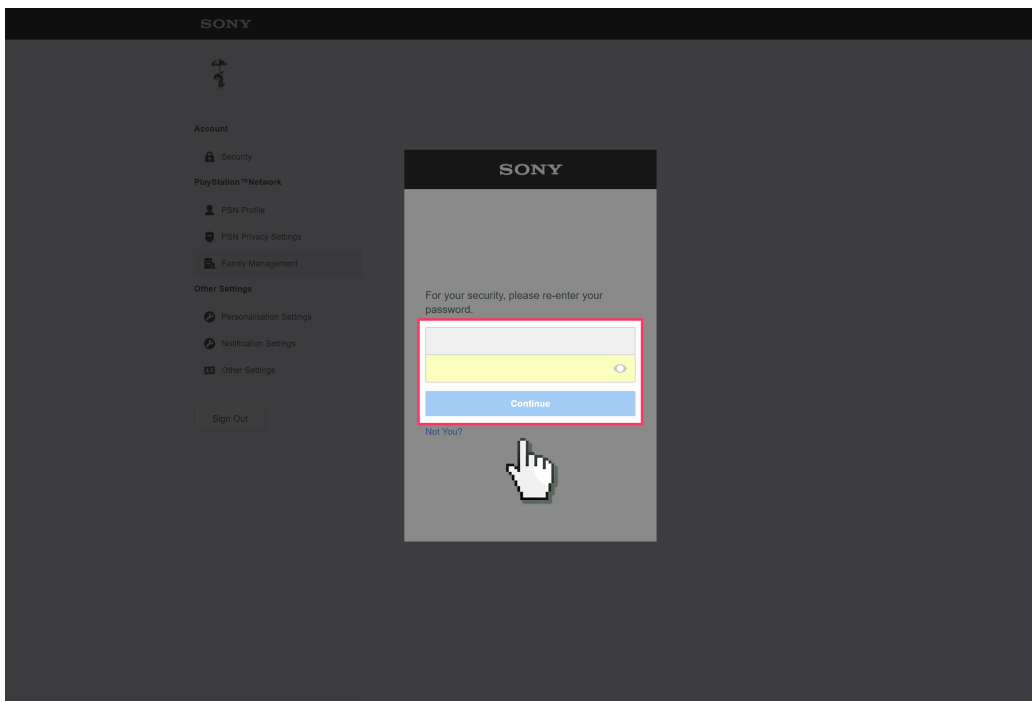


PlayStation Network

Step by step guide

4

You will need to confirm your account details again. Click "Continue".

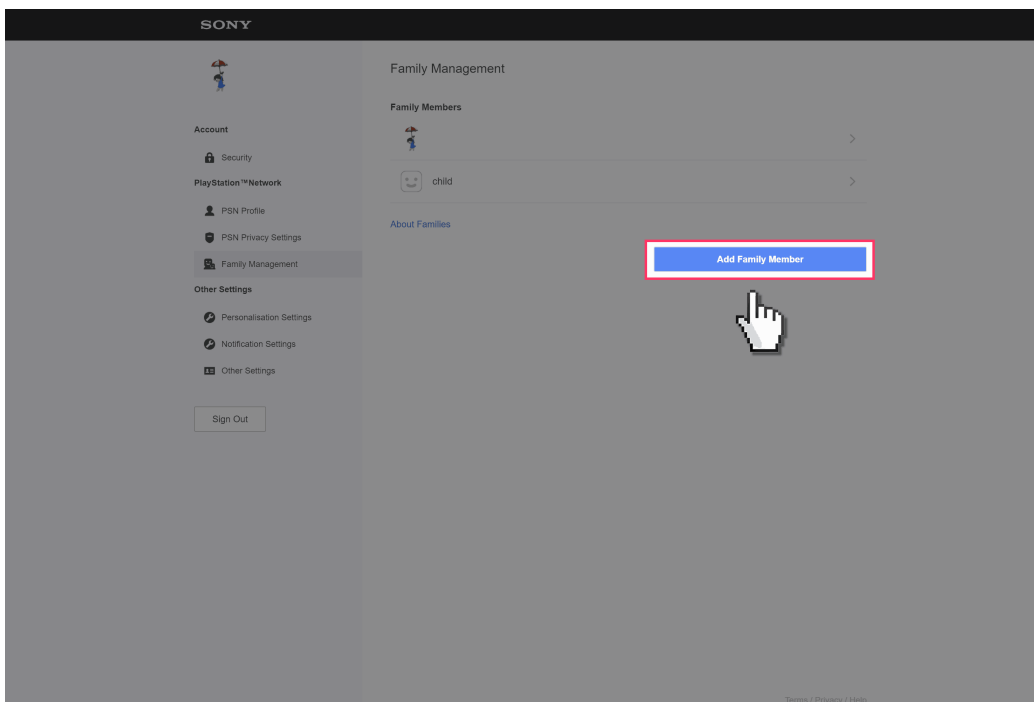


PlayStation Network

Step by step guide

5

Click on “Add Family Member” then Click on “OK”.

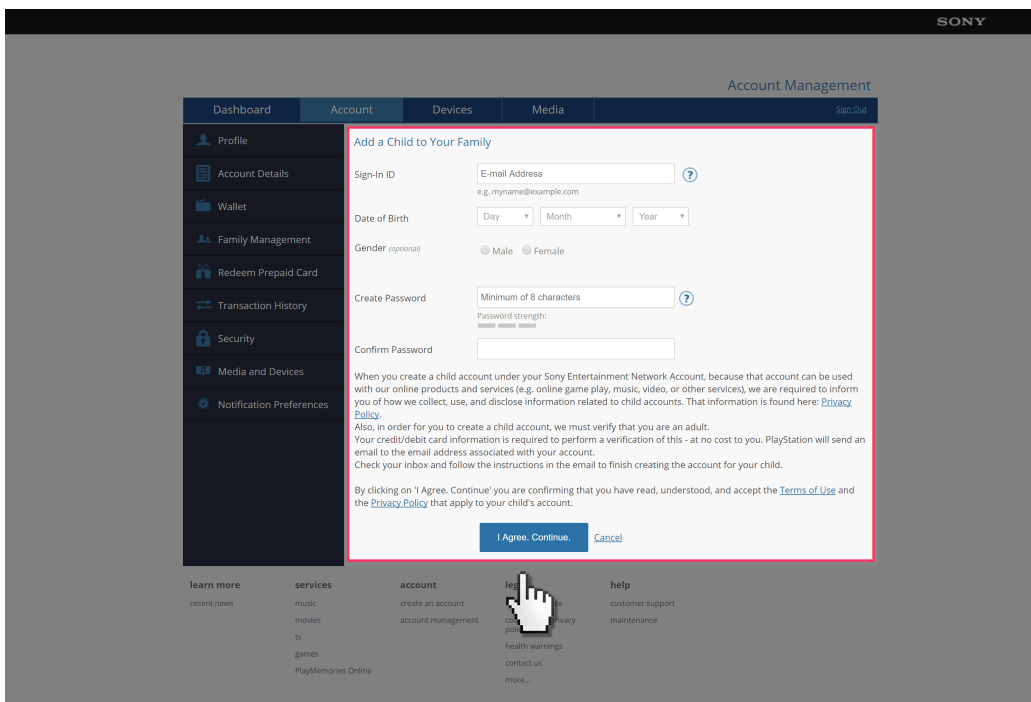


PlayStation Network

Step by step guide

6

Fill out the details for your child. Use their email address or your own. The username and password to use for this account are generated on this page. Click “I Agree. Continue” when finished.



Account Management

Dashboard Account Devices Media Sign Out

Profile
Account Details
Wallet
Family Management
Redeem Prepaid Card
Transaction History
Security
Media and Devices
Notification Preferences

Add a Child to Your Family

Sign-in ID ?
e.g. myname@example.com

Date of Birth

Gender (optional) Male Female

Create Password ?
Password strength: strong medium weak

Confirm Password

When you create a child account under your Sony Entertainment Network Account, because that account can be used with our online products and services (e.g. online game play, music, video, or other services), we are required to inform you of how we collect, use, and disclose information related to child accounts. That information is found here: [Privacy Policy](#).

Also, in order for you to create a child account, we must verify that you are an adult. Your credit/debit card information is required to perform a verification of this - at no cost to you. PlayStation will send an email to the email address associated with your account. Check your inbox and follow the instructions in the email to finish creating the account for your child.

By clicking on 'I Agree. Continue' you are confirming that you have read, understood, and accept the [Terms of Use](#) and the [Privacy Policy](#) that apply to your child's account.

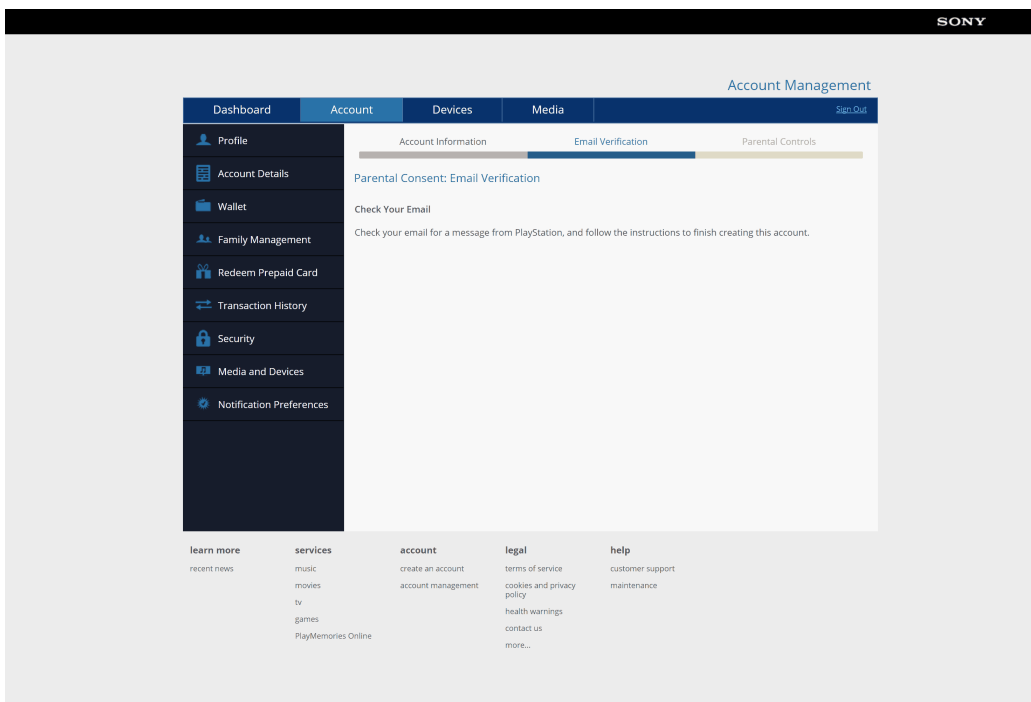
learn more recent news
services music movies tv games PlayMemories Online
account create an account account management
help customer support maintenance
learn more about privacy policy health warnings contact us more...

PlayStation Network

Step by step guide

7

You will now need to access the email account of your parental/master account to verify the creation of the sub-account. Click the link in the email and then move on to the next step.

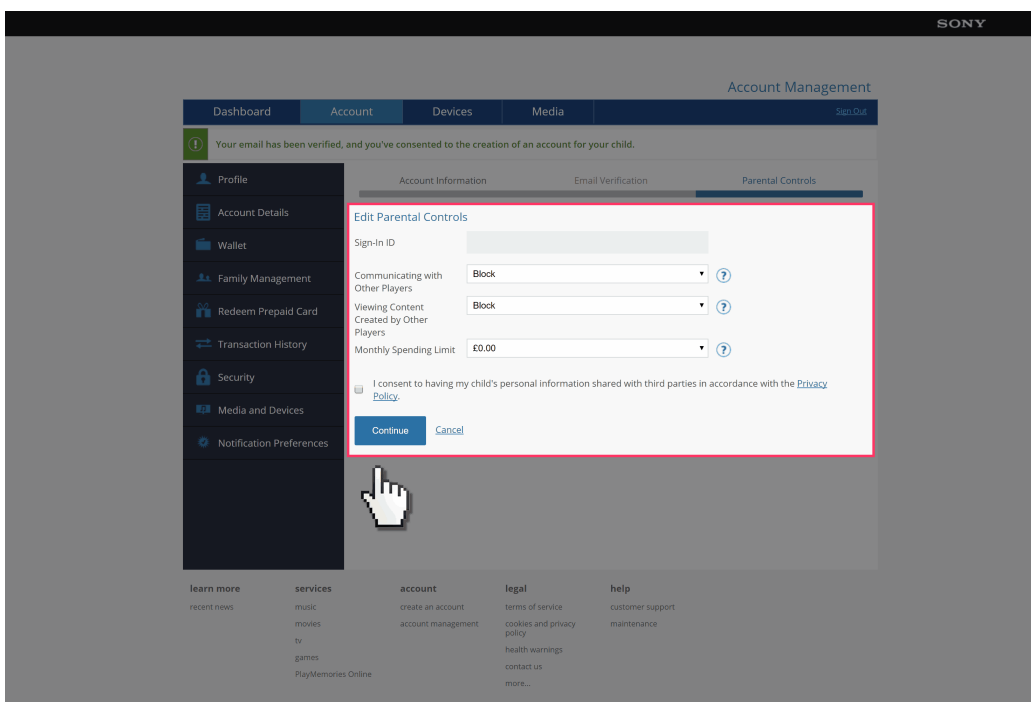


PlayStation Network

Step by step guide

8

We can now set Parental Controls for your child's account. Select if you would like your child to be able to "Communicate with Other Players", "Viewing Content Created by Other Players", and set a "Monthly Spending Limit". Once select "Consent" and then "Continue".



PlayStation Network

Step by step guide

9

You have now created an account for your child that they can log into PlayStation devices with.

