



Alloway Primary School and EYC



School Improvement Plan 2024-25





**OUR VISION FOR
ALLOWAY
PRIMARY AND EYC**

*To provide a safe, happy,
purposeful and nurturing
learning environment
where everyone feels
valued and respected.
Everyone is supported to be
the best they can be by
working together to
promote kindness, inclusion
and resilience.*

OUR VALUES
At Alloway Primary and
EYC we are.....

 **kind**

 **respectful**

 **safe**

 **inclusive**



We have launched our new Vision and Values and children are responding well to these. We give out values stickers when children demonstrate school values.





School Improvement Plan

Alloway Primary - School Improvement Plan 2023-25 - Our key priorities this year (24-25) will be:



	<p>Priority One: Raising attainment in Literacy by maintaining consistently high standards in the quality of all children's experiences.</p>	<p>EYC – Children will develop early reading skills and a love for reading through promotion of a reading culture within the EYC, both indoors and in the outdoor area.</p>	<p>SCHOOL - To develop confident and skilled readers in South Ayrshire with a lifelong love of reading and the confidence to access all aspects of education, culture and society.</p>	<p>To support and develop all education staff in South Ayrshire to implement best practice through a culture of shared knowledge, <u>collaboration</u> and enquiry.</p>	<p>There is a positive impact on children's writing attainment through further developing Talk for Writing as part of our writing pedagogy.</p>
	<p>Priority Two: To raise attainment through further developing our wider curriculum, procedures and systems <u>to ensure</u> children reach their full potential.</p>	<p>EYC – Children will develop early numeracy skills through development of the outdoor area to promote high quality numeracy and maths experiences.</p> <p>Children will experience an inclusive environment through developing nurture-based and communication friendly approaches within the EYC.</p> <p>Children's outdoor experiences will be enhanced through developing our approaches to sustainability, <u>woodwork</u> and Forest Kindergarten.</p> <p>Children will experience a coherent approach to digital technologies within the EYC and will benefit from increased opportunities and skills.</p>	<p>SCHOOL - Children will experience a consistency in teaching pedagogy across the school.</p>	<p>Children will experience high quality learning, teaching and assessment <u>in order to</u> raise attainment in numeracy.</p>	<p>Children will experience high quality outdoor experiences through further development of our outdoor learning within all curricular areas.</p>
	<p>Priority Three: To ensure all children reach their full potential.</p>	<p>Children's attendance will improve through promotion a pattern of good attendance that will impact directly on raising attainment.</p>	<p>Children who have an experience of care are supported by staff to ensure improved outcomes and wellbeing.</p>		

Here are our improvement priorities.





South Ayrshire Reads



What have we achieved so far? (NOV 24)



- Teaching staff training sessions along with Forehill Primary and Grammar Primary on Encoding/Decoding and Fluency.
- School assistant training from South Ayrshire Reads team.
- EYC staff have engaged on South Ayrshire Reads training.
- Staff have revisited how their stage teaches reading and have aligned their approach to the Science of Reading.
- Homework survey with parents and homework changed to take account of parents' views and to align to the Science of Reading approach.
- South Ayrshire Reads workshop for parents on 13.11.24.
- New Decodable reading books and resources that align with Science of Reading.
- Training across all staff teams will continue.
- Further workshop opportunity to be offered to parents in Term 3.





Teaching Pedagogy

What have we achieved so far? (NOV 24)



OUR ALLOWAY EXPECTATIONS



Within Alloway Primary these are the expectations for high quality learning, teaching and assessment:

- Planning (online planning used for weekly, medium term, long term)
- Assessment:
 - Formative AfL strategies
 - Peer and Self Assessments
 - Ongoing teacher feedback - make, say, write, do (marking policy)
 - Summative assessments and skills tracking (Assessment calendar)
 - Learning Intention and Co-Created Success Criteria
- Differentiation - challenge/support (fluid groupings)
- Engaging Starter (hook) and teaching of main learning point
- Reflection time (plenary, daily/weekly round up and target time)
- Higher order questioning
- Pace
- Variety of teaching and learning approaches eg, play pedagogy, active approaches, MTV routines, collaborative learning, independent/paired/group activities, research based tasks, digital technologies to enhance learning, tasks to promote creativity
- Tidy, well-organised learning environment where displays are meaningful, current and celebrate learning
- Positive, welcoming ethos
- Behaviour expectations are high and underpinned by our school values
- Relationship Policy and Class Charters (RRS) evident in class
- Jotters are well presented in line with Marking Policy, they include a range of evidence of learning and feedback
- Learning Journals are used to share class stories and capture class learning
- Each child has a Learning Profile which is linked to personal targets, includes evidence of learning and celebrates success.
- Children are involved in creating personal targets and can talk about these.



- Alloway Expectations have been introduced across all classes.
- Staff training taken place in what the Expectations are.
- Staff have self-evaluated using the Alloway Expectations.
- Focus on Co-construction of Success Criteria.
- Focus on using interactive digital methods to capture pupil views – eg Plicker.
- Staff continue to use the Concrete, Pictorial, Abstract approach in Numeracy across all stages.
- Revisit approaches to Loose Parts Play across the school.
- Play pedagogy continues to develop across the school, with a focus in the infant department.
- Early Years Centre have engaged with the Communication Friendly Approach. Forest school is in place with children enjoying this experience.
- EYC staff attended the South Ayrshire ASN conference in October.

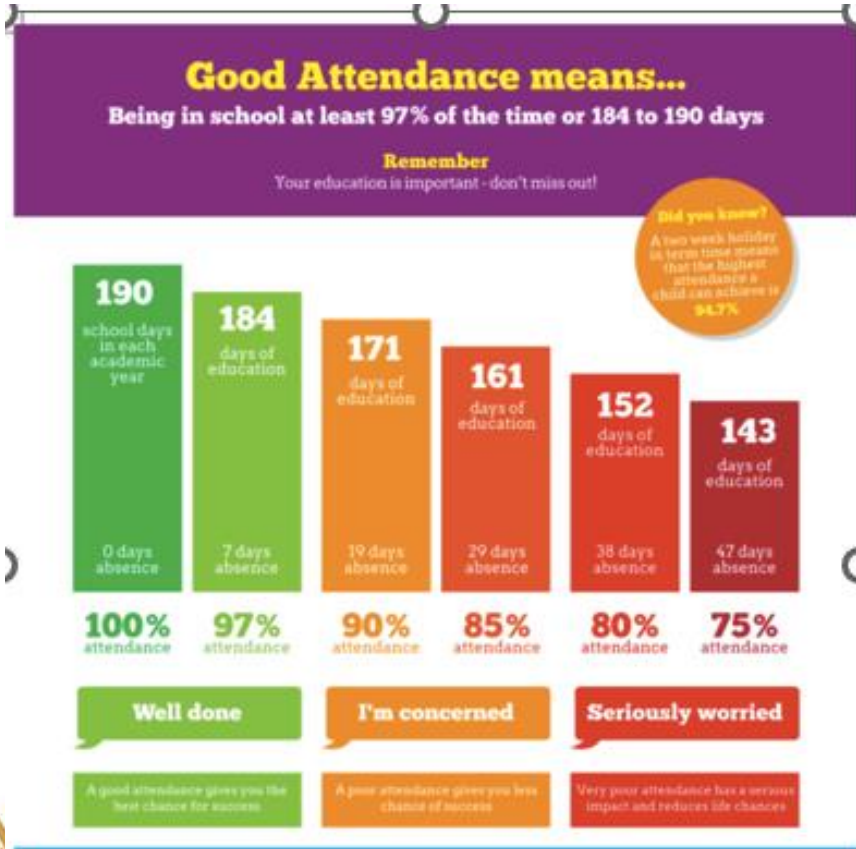




Attendance



What have we achieved so far? (NOV 24)



- New Attendance policy in place this session.
- Mrs Emma Park measures and tracks attendance closely and is building relationships with families to support positive attendance patterns.
- Mrs Park is part of an authority working group with a focus on attendance.
- Weekly attendance is improving in the school week on week compared to last session.
- Mrs Park is sharing monthly attendance facts with our school community.
- The school is very supportive of the South Ayrshire Council, 'Every Learner, Every Day' campaign.





School Improvement Plan



Please complete this short survey to share your views about our School Improvement Plan.

