





## OUR VISION FOR ALLOWAY PRIMARY AND EYC

*To provide a safe, happy,  
purposeful and nurturing  
learning environment  
where everyone feels  
valued and respected.  
Everyone is supported to be  
the best they can be by  
working together to  
promote kindness, inclusion  
and resilience.*



## OUR VALUES

At Alloway Primary and  
EYC we are.....



kind



respectful



safe



inclusive



GOLD - RIGHTS RESPECTING





# School Improvement Plan

Alloway Primary - School Improvement Plan 2023-25 - Our key priorities this year (24-25) will be:



	<p><b>Priority One:</b> Raising attainment in Literacy by maintaining consistently high standards in the quality of all children's experiences.</p>	<p>EYC – Children will develop early reading skills and a love for reading through promotion of a reading culture within the EYC, both indoors and in the outdoor area.</p>	<p><u>SCHOOL</u> - To develop confident and skilled readers in South Ayrshire with a lifelong love of reading and the confidence to access all aspects of education, culture and society.</p>	<p>To support and develop all education staff in South Ayrshire to implement best practice through a culture of shared knowledge, <u>collaboration</u> and enquiry.</p>	<p>There is a positive impact on children's writing attainment through further developing Talk for Writing as part of our writing pedagogy.</p>
	<p><b>Priority Two:</b> To raise attainment through further developing our wider curriculum, procedures and systems <u>to ensure</u> children reach their full potential.</p>	<p>EYC – Children will develop early numeracy skills through development of the outdoor area to promote high quality numeracy and maths experiences.</p> <p>Children will experience an inclusive environment through developing nurture-based and communication friendly approaches within the EYC.</p> <p>Children's outdoor experiences will be enhanced through developing our approaches to sustainability, <u>woodwork</u> and Forest Kindergarten.</p> <p>Children will experience a coherent approach to digital technologies within the EYC and will benefit from increased opportunities and skills.</p>	<p><u>SCHOOL</u> - Children will experience a consistency in teaching pedagogy across the school.</p>	<p>Children will experience high quality learning, teaching and assessment <u>in order to</u> raise attainment in numeracy.</p>	<p>Children will experience high quality outdoor experiences through further development of our outdoor learning within all curricular areas.</p>
	<p><b>Priority Three:</b> To ensure all children reach their full potential.</p>	<p>Children's attendance will improve through promotion a pattern of good attendance that will impact directly on raising attainment.</p>	<p>Children who have an experience of care are supported by staff to ensure improved outcomes and wellbeing.</p>		





# South Ayrshire Reads



- South Ayrshire Reads Team
- Science of Reading approach
- Staff Professional Learning
- Working with Forehill and Grammar Primary
- Revising how we are teaching reading and spelling
- Foster a love of reading
- New resources
- Parent information and workshops to follow
- Early Years Centre focus





# Teaching Pedagogy



## OUR ALLOWAY EXPECTATIONS

Within Alloway Primary these are the expectations for high quality learning, teaching and assessment:

- Planning (online planning used for weekly, medium term, long term)
- Assessment:
  - Formative AiFL strategies
  - Peer and Self Assessments
  - Ongoing teacher feedback - make, say, write, do (marking policy)
  - Summative assessments and skills tracking (Assessment calendar)
  - Learning Intention and Co-Created Success Criteria
- Differentiation - challenge/support (fluid groupings)
- Engaging Starter (hook) and teaching of main learning point
- Reflection time (plenary, daily/weekly round up and target time)
- Higher order questioning
- Pace
- Variety of teaching and learning approaches eg, play pedagogy, active approaches, MTV routines, collaborative learning, independent/paired/group activities, research based tasks, digital technologies to enhance learning, tasks to promote creativity
- Tidy, well-organised learning environment where displays are meaningful, current and celebrate learning
- Positive, welcoming ethos
- Behaviour expectations are high and underpinned by our school values
- Relationship Policy and Class Charters (RRS) evident in class
- Jotters are well presented in line with Marking Policy, they include a range of evidence of learning and feedback
- Learning Journals are used to share class stories and capture class learning
- Each child has a Learning Profile which is linked to personal targets, includes evidence of learning and celebrates success.
- Children are involved in creating personal targets and can talk about these.



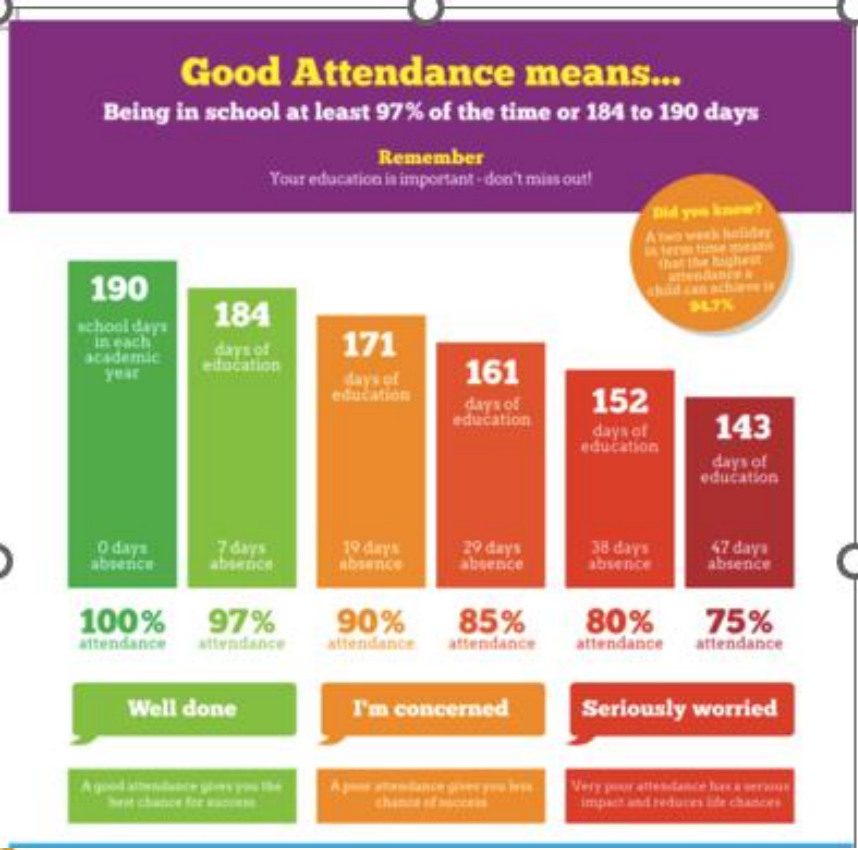
- Alloway Expectations
- Consistency across the school
- Focus on staff professional learning
- Numeracy – concrete, abstract and pictorial approach
- Outdoor learning
- Play pedagogy
- Early Years Centre focus on numeracy approaches, communication friendly environment, forest school and digital technologies







# Attendance



- Every Learner Every Day
- Promoting improved attendance
- Mrs Emma Park PT – remit
- Supportive role – supporting improved attendance
- Working closely with families





To make a difference  
in someone's life you  
don't have to be brilliant,  
rich, beautiful, or perfect.

**You just have to care.**

-Mandy Hale

