



# WELCOME TO TRINITY HIGH



## TRANSITION BOOKLET 2025



## KEY INFORMATION FOR P7 PUPILS

## WELCOME TO TRINITY HIGH

Dear Primary 7 pupils,

Firstly a very warm welcome to Trinity High School.

We hope that you are excited to join us as S1 pupils for our new school session.

We are very much looking forward to you joining our school community and have lots of plans in place to make sure your transition to secondary school will be successful.

We have already been learning all about you and your talents from your teachers so we will be well prepared to support you and celebrate your achievements when you come to high school.

This booklet is designed to give you a little bit of information about Trinity High school so you can learn a bit more about what you can look forward to.

We hope you enjoy reading it.

*From*

*The Pupil Support Team.*



## THE VALUES OF TRINITY HIGH



### FAITH

Our Faith underpins everything we do at Trinity and binds all our other values together. As a Catholic school we are guided and inspired by the values of the Gospel. Our faith guides our approach and our commitment to love and to care for every member of our school community.

### COMMUNITY

We believe that every single person has a role to play in making our school even better. It's not just the teachers and pupils but parents and carers too, working in partnership to help you feel you belong to and are included in the life of the school.



## **ACHIEVING**

We want all pupils to reach their potential. This requires us to work as a community to make sure we are providing the best opportunities for all. This also means you need to be responsible as well, by coming to school well prepared, motivated, enthusiastic and with a positive mindset towards learning.

## **RESPECT**

Everyone should be treated in a fair and equal way. We understand that we are all different and we should celebrate our differences to make sure there is a place for everyone at Trinity High. To treat people with respect we have to listen closely to instructions and explanations at all times and adhere to all reasonable requests.

## **EQUALITY**

Everyone at Trinity will be treated equally and will be given support to reach their goals. Trinity has a very supportive, inclusive ethos.

## **SCHOOL MOTTO**

**"Achieving excellence together."**



## SUPPORTING YOU

Just as in Primary school, there are lots of people here to help you as you settle into Trinity. As well as your subject teachers, some teachers have extra duties to make sure you are happy, safe and reaching your full potential.

## PUPIL SUPPORT TEAM

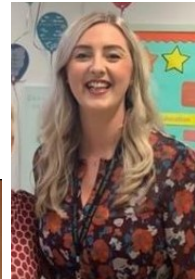
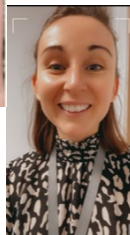
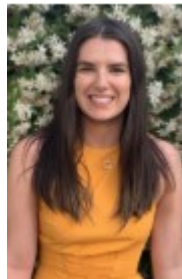
**HEAD TEACHER -  
MR MARSHALL**



**PUPIL SUPPORT  
COORDINATOR -  
MR MCEWAN**



**INCLUSIVE  
SUPPORT  
DEPARTMENT -  
MRS REID, MS  
WADDELL &  
MRS QUIGLEY**



## PUPIL SUPPORT TEAM



Every member of staff here at Trinity is here to help and support you



**FAMILY WELLBEING TEAM -  
MR BRUCE & MS FRY**



**PASTORAL SUPPORT TEACHERS - DR MCGUIRE, MRS  
ADAMS, MRS TODESCO, & MR MCINNES**



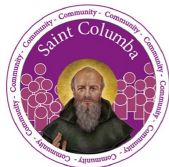
**NURTURE KEYWORKER -  
MRS O'NEILL**



## HOUSE STRUCTURE

Trinity has a house structure where there is a head of house (Depute Head Teacher) and a pastoral teacher working together to support the young people.

Mrs McElroy (DHT)



Ms Monaghan (DHT)



Mr McEwan (DHT)



Ms Parker (DHT)



## SOME ANSWERS TO YOUR QUESTIONS

I am worried I won't know anyone in my class.

We have spoken to your Primary 7 teachers to see who you work well with and get on with. We will do everything we can to make sure that you are in classes with these people. **Advice from S1 pupils is to try new clubs and activities to meet new people** There will be lots of new people to meet as well. Exciting!



I think I am going to get lost when moving from class to class. Will I get into trouble for this?



Even teachers when they start in a new school can get lost. Do not worry about this. Everyone is helpful at Trinity and if you get lost, just ask for directions. We will have some friendly staff and pupils who'll accompany your classes around until you get to know your surroundings.



## SOME ANSWERS TO YOUR QUESTIONS

I am worried that I will get bullied. Who should I go to if this happens?



Thankfully, bullying behaviour at Trinity is very rare. If it does happen, then you report it to any member of staff or speak to your pastoral teacher. Together, we will be able to support you and put a stop to it.

Will I be in the same house as my brothers/sisters?



Yes you will be in the same house group as your siblings. This means you will have the same pastoral teacher and head of house who will get to know you well.

Will we still have buddies?

Our S6 pupils are trained as Buddies. You will meet them when you arrive in August.



## THE SCHOOL DAY

One of the biggest differences that you will notice when you start is the structure of the school day.

Unlike in Primary school, you will have many different classes and different teachers. Each day, you will follow a timetable and move from class to class. We call these classes periods, and you will have as many as Seven in one day!

Here is a guide to the school day

Monday, Tuesday & Thursday

Time	Event
8.50 – 9.40	Period 1
9.40 – 10.30	Period 2
10.30 – 10.45	Interval
10.45 – 11.35	Period 3
11.35 – 12.25	Period 4
12.25 – 1.15	Period 5
1.15 – 2.00	Lunch
2.00 – 2.50	Period 6
2.50 – 3.40	Period 7

Wednesday & Friday

Time	Event
8.50 – 9.40	Period 1
9.40 – 10.30	Period 2
10.30 – 10.45	Interval
10.45 – 11.35	Period 3
11.35 – 12.25	Period 4
12.25 – 1.15	Lunch
1.15 – 2.00	Period 5
2.00 – 2.50	Period 6
2.50 – 3.40	Yes

## FOLLOWING A TIMETABLE

One of the biggest changes that you will need to adapt to is following a timetable each day and making sure you know what classes you have.

Pupils need to :

Know how the timetable works

Know what lessons you have each day



	1
Monday	Administration/Business Management CIE Miss Collins
Tuesday	Home Economics School Miss Mitchell
Wednesday	Mathematics S2 School Mrs Dillon
Thursday	Physical Education School Miss Davidson
Friday	Social Education School Mrs McLaughlin

## THE TIMETABLE

### HELPFUL ADVICE FROM PUPILS

Pack your bag the night before. That way you are only carrying the materials you need rather than them all. This will also ensure you are organised.



If you have PE, you can bring kit in a different bag, so you don't get everything else all squashed.



Take a screen shot of your timetable and save it as your wallpaper on your phone. If you lose the paper copy, you will still know where to go.



# GETTING AROUND: A MAP

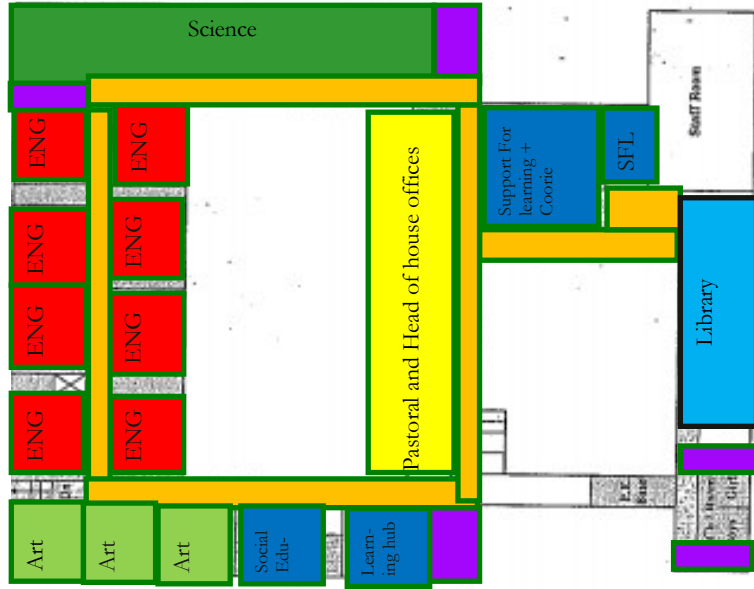


A Basic diagram of the layout of the bottom floor of the School. Department class-rooms are colour coded. Orange parts are corridors. Purple are stairs

A Basic diagram of the layout of the first and second floor of the school. Department classrooms are colour coded. Orange parts are corridors. Purple are stairs



Second Floor



First Floor

## STEPS TO SUCCESS

UNCRC articles 28 and 29 promote the right to an education and encouraging children's to respect everyone's rights. Trinity high has a steps to success procedure and encourage all to take positive steps to learning and involvement in lessons.



If there are any issues affecting learning in the classroom, the teachers follow the procedures to support and rectify any issues that come up.

Every pupil is encouraged to take pride in their education.



## ARRIVING TO CLASS.

- Pupils should arrive to class on time **every period**
- Pupils should only enter the class if the teacher is there to greet them.  
If there is no teacher in the class, they should line up in an orderly fashion outside of the class.
- All outdoor jackets and hoodies should be removed at the start of each period before you enter the classroom.

## MOBILE PHONE POLICY



Pupils will place their mobile phones into the box provided as they enter the classroom.

The phone will remain in the box during the lesson unless the pupils are instructed to retrieve it during the lesson.

Phones will be collected by the pupils at the end of the lesson

All phones brought into school are done so at your own risk.

**MY THOUGHTS  
WHAT AM I MOST LOOKING  
FORWARD TO AT TRINITY**



**MY THOUGHTS  
WHAT AM I WORRIED ABOUT FOR  
GOING TO TRINITY**

## SCHOOL LUNCH

We have a Canteen and S1 pupils use this to purchase their lunch or use the facilities to eat a packed lunch.

School lunches can be purchased through our cashless catering system. You can use Parent Pay to add money to your account.

## SCHOOL UNIFORM

All pupils are expected to wear full school uniform at all times. We will be working closely with parents to make sure these expectations are upheld.

The uniform for S1 pupils is as follows:

- Blazer
- White Shirt/Blouse
- Black Trousers/Appropriate Black School Skirt
- School Tie (green)
- Black Jumper
- Black school shoes/trainers featuring no obvious or coloured logos/branding.
- A PE Kit when required



Black formal trousers or skirt.



Black shoes



Black V Neck jumper/ school sweatshirt or cardigan.

The following items are not part of our school uniform and should not be worn.

- Trainers with any obvious colour or branding (inc. 'Converse' style baseball boots)
- Tracksuit tops or hoodies
- Tracksuit trousers or leggings
- Denim Jackets or jeans

## KEEPING IN TOUCH

### Here to help

We look forward to welcoming you all for the start of S1.

We will keep in touch with you over the next few months to make sure you have everything you need for starting at Trinity High.

In the meantime we encourage you to follow the school's bluesky account and visit the school website.

School website:

<https://blogs.glowscotland.org.uk/re/trinityhighschool/>

**Bluesky : @trinityhighrenfrew.bky.social**



