



**WELCOME TO
TRINITY HIGH**



TRANSITION BOOKLET

2024



**KEY INFORMATION FOR P7
PUPILS**

WELCOME TO TRINITY HIGH

Dear Primary 7 pupils,

Firstly a very warm welcome to Trinity High School.

We hope that you are excited to join us as S1 pupils for our new school session.

We are very much looking forward to you joining our school community and have lots of plans in place to make sure your transition to secondary school will be successful.

We have already been learning all about you and your talents from your teachers so we will be well prepared to support you and celebrate your achievements when you come to high school.

This booklet is designed to give you a little bit of information about Trinity High school so you can learn a bit more about what you can look forward to.

We hope you enjoy reading it.

From

The Pupil Support Team.



THE VALUES OF TRINITY HIGH



FAITH

Our Faith underpins everything we do at Trinity and binds all our other values together. As a Catholic school we are guided and inspired by the values of the Gospel. Our faith guides our approach and our commitment to love and to care for every member of our school community.

COMMUNITY

We believe that every single person has a role to play in making our school even better. It's not just the teachers and pupils but parents and carers too, working in partnership to help you feel you belong to and are included in the life of the school.



ACHIEVING

We want all pupils to reach their potential. This requires us to work as a community to make sure we are providing the best opportunities for all. This also means you need to be responsible as well, by coming to school well prepared, motivated, enthusiastic and with a positive mindset towards learning.

RESPECT

Everyone should be treated in a fair and equal way. We understand that we are all different and we should celebrate our differences to make sure there is a place for everyone at Trinity High. To treat people with respect we have to listen closely to instructions and explanations at all times and adhere to all reasonable requests.

EQUALITY

Everyone at Trinity will be treated equally and will be given support to reach their goals. Trinity has a very supportive, inclusive ethos.

SCHOOL MOTTO

"Achieving excellence together."



SUPPORTING YOU

Just as in Primary school, there are lots of people here to help you as you settle into Trinity. As well as your subject teachers, some teachers have extra duties to make sure you are happy, safe and reaching your full potential.

PUPIL SUPPORT TEAM

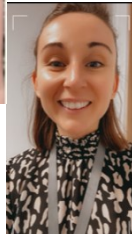
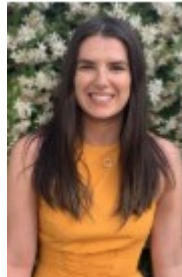
HEAD TEACHER -
MR MARSHALL



PUPIL SUPPORT
COORDINATOR -
MR MCEWAN



INCLUSIVE
SUPPORT -
MRS REID, MS
WADDELL &
MRS QUIGLEY



PUPIL SUPPORT TEAM



Every member of staff here at Trinity is here to help and support you



**FAMILY WELLBEING TEAM -
MR BRUCE & MS FRY**



**PASTORAL SUPPORT TEACHERS - DR MCGUIRE, MISS
MCGUIGAN, MRS TODESCO, & MR MCINNES**



**INCLUSION SUPPORT
ASSISTANT -
MRS MELVIN**



**NURTURE KEYWORKER-
MRS O'NEILL**



SOME ANSWERS TO YOUR QUESTIONS

We know that you will have lots of questions about your transition to Trinity. Here we will take some time to answer some common questions..

I have dyslexia and get support for this in class and extra time in tests, will this be the same at Trinity?

An excellent question. Staff from Trinity have already spoken to your Primary 7 teachers to find out all about you and the support that you need. This means that we will do everything possible to make sure you get the support you need when you arrive at Trinity.



I am worried the work will be too hard. How will teachers at Trinity know what level I am working at?



Again, we discuss this information with your Primary 7 teachers and make sure all your teachers know the level you are working at. It should feel like a natural progression from P7 to S1.

SOME ANSWERS TO YOUR QUESTIONS

I am worried I won't know anyone in my class.

We have spoken to your Primary 7 teachers to see who you work well with and get on with. We will do everything we can to make sure that you are in classes with these people. Advice from previous S1 pupils is to try new clubs and activities to meet new people. There will be lots of new people to meet as well. Exciting!



I think I am going to get lost when moving from class to class. Will I get into trouble for this?



Even teachers when they start in a new school can get lost. Do not worry about this. Everyone is helpful at Trinity and if you get lost, just ask for directions. We will have some friendly staff and pupils who'll accompany your classes around until you get to know your surroundings.

SOME ANSWERS TO YOUR QUESTIONS

I am worried that I will get bullied. Who should I go to if this happens?



Thankfully, bullying behaviour at Trinity is very rare. If it does happen, then you report it to any member of staff or speak to your pastoral teacher. Together, we will be able to support you and put a stop to it.

Will I be in the same house as my brothers/sisters?



Yes you will be in the same house group as your siblings. This means you will have the same pastoral teacher and head of house-who will get to know you well.

Will we still have buddies?

Our S6 pupils are trained as Buddies. You will meet them at induction days and when you return in August.



THE SCHOOL DAY

One of the biggest differences that you will notice when you start is the structure of the school day.

Unlike in Primary school, you will have many different classes and different teachers. Each day, you will follow a timetable and move from class to class. We call these classes periods, and you will have as many as Seven in one day!

Here is a guide to the school day

Monday, Tuesday & Thursday

Time	Event
8.50 – 9.40	Period 1
9.40 – 10.30	Period 2
10.30 – 10.45	Interval
10.45 – 11.35	Period 3
11.35 – 12.25	Period 4
12.25 – 1.15	Period 5
1.15 – 2.00	Lunch
2.00 – 2.50	Period 6
2.50 – 3.40	Period 7

Wednesday & Friday

Time	Event
8.50 – 9.40	Period 1
9.40 – 10.30	Period 2
10.30 – 10.45	Interval
10.45 – 11.35	Period 3
11.35 – 12.25	Period 4
12.25 – 1.15	Lunch
1.15 – 2.00	Period 5
2.00 – 2.50	Period 6
2.50 – 3.40	Yes

FOLLOWING A TIMETABLE

One of the biggest changes that you will need to adapt to is following a timetable each day and making sure you know what classes you have.

Pupils need to :

Know how the timetable works

Know what lessons you have each day



THE TIMETABLE

Register Group: M1

Stage: S2

	1	2	3	4	5	6	7
Monday	Administration/Business Management CCE Miss Collins	Mathematics S2 School Mrs Dillon	Religious Studies S2 School Mrs McKillop	Technological Studies S2 School Mr Livingston	English S2 School Ms Downie	Modern Studies S2 School Mr Mauchlen	Physical Education S2 School Miss Davidson
Tuesday	Home Economics S2 School Miss Mitchell	French S2 School Mrs Goldie	English S2 School Ms Downie	Physical Education S2 School Miss Davidson	Modern Studies S2 School Mr Mauchlen	Science S2 School Miss Dyson	Mathematics S2 School Mrs Dillon
Wednesday	Mathematics S2 School Mrs Dillon	English S2 School Ms Downie	Art S2 School Miss Mauchlen	Technological Studies S2 School Miss Hall	Music S2 School Mr Solley	Science S2 School Miss Dyson	
Thursday	Physical Education S2 School Miss Davidson	Modern Studies S2 School Mr Mauchlen	English S2 School Ms Downie	Home Economics S2 School Miss Mitchell	French S2 School Mrs Goldie	Science S2 School Miss Dyson	Religious Studies S2 School Mrs McKillop
Friday	Social Education S2 School Mrs McLaughlin	Art S2 School Miss Henderson	Mathematics S2 School Mrs Dillon	French S2 School Mrs Goldie	Music S2 School Mr Solley	Comp S2 School Mrs Robbie	

HELPFUL ADVICE FROM PUPILS

Pack your bag the night before. That way you are only carrying the materials you need rather than them all. This will also ensure you are organised.



If you have PE, you can bring kit in a different bag, so you don't get everything else all squashed.



Take a screen shot of your timetable and save it as your wallpaper on your phone. If you lose the paper copy, you will still know where to go.



GETTING AROUND: A MAP

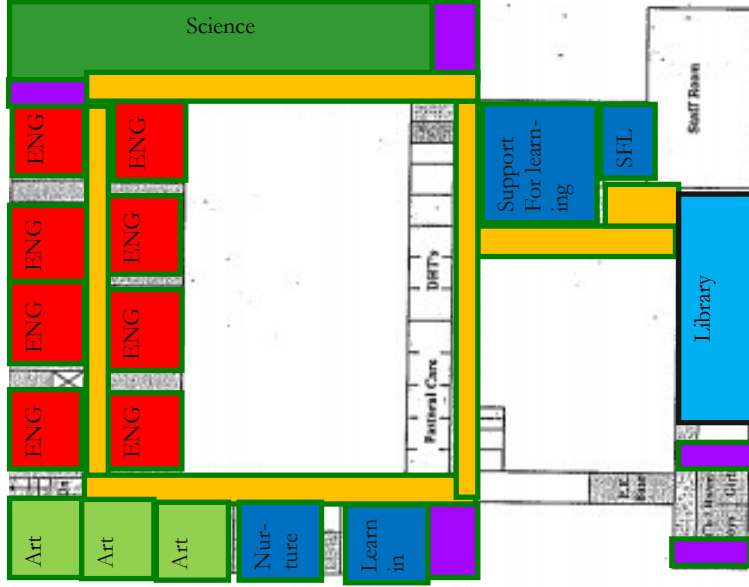


A Basic diagram of the layout of the bottom floor of the School. Department classrooms are colour coded. Orange parts are corridors. Purple are stairs

A Basic diagram of the layout of the first and second floor of the school. Department classrooms are colour coded. Orange parts are corridors. Purple are stairs.



Second Floor



First Floor

SCHOOL LUNCH

We have a Canteen and S1 pupils use this to purchase their lunch or use the facilities to eat a packed lunch.

School lunches can be purchased through our cashless catering system. You can use Parent Pay to add money to your account.

SCHOOL UNIFORM

All pupils are expected to wear full school uniform at all times. We will be working closely with parents to make sure these expectations are upheld.

The uniform for S1 pupils is as follows:

- Blazer
- White Shirt/Blouse
- Black Trousers/Appropriate Black School Skirt
- School Tie (green)
- Black Jumper
- Black school shoes/trainers featuring no obvious or coloured logos/branding.
- A PE Kit when required



Black formal trousers or skirt.



Black shoes



Black V Neck jumper/ school sweatshirt or cardigan.

The following items are not part of our school uniform and should not be worn.

- Trainers with any obvious colour or branding (inc. 'Converse' style baseball boots)
- Tracksuit tops or hoodies
- Tracksuit trousers or leggings
- Denim Jackets or jeans

KEEPING IN TOUCH

Here to help

We look forward to welcoming you all for the start of S1.

We will keep in touch with you over the next few months to make sure you have everything you need for starting at Trinity High.

In the meantime we encourage you to follow the school's twitter account and visit the school website for our dedicated New S1 page.

School twitter : @Trinityrenfrew

School website:

<https://blogs.glowscotland.org.uk/re/trinityhighschool/>



