

Welcome to Primary 3/2



Meet the Teacher Afternoon
Friday 30th August 2024

Our Shared Vision:

We hope that this year we will all work together to ensure that we meet our school vision.

In learning, we are all growing and succeeding together.



To Support our School Vision,
our Shared Values are:

Faith, Trust, Team work, Respect,
Responsibility, Success

Learning about these values will help guide your child's thinking
and behaviour.



To help us achieve our school Vision and Values

Our School Aims are:

Be Brave

Unleash Creativity

Demonstrate Excellence

Show/Radiate Enthusiasm



Primary 3/2 Class Teachers

Mrs Smith - Monday and Tuesday



Mrs McVicker - Wednesday to Friday



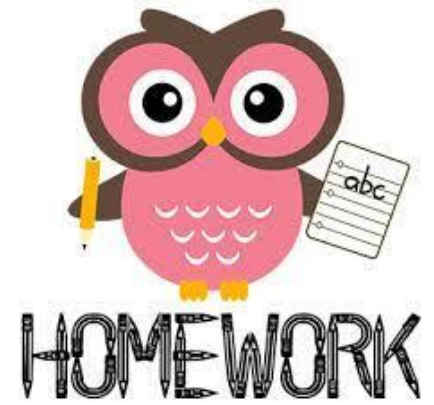
Daily Routine for Primary 3/2

- Line up in the playground
- Put away own resources (jacket, bag, lunchbox, homework folder, etc)
- Prayers/register/ lunch choices
- Learning activities throughout the day will include:
 - ❖ Direct teaching time
 - ❖ Independent activities
 - ❖ Paired tasks
 - ❖ Group learning activities
 - ❖ Focused teaching time with small groups
- Each day one child will be chosen as PATHS pupil of the day and will receive their compliments from us.

Primary 3/2 Weekly Timetable

	9.00-9.15	9.15 – 9.50	9:50-10:40	10:40-10:55	10:55-11:45	11:45-12:35	12:35-1:20	1.20-2.10	2.10-3.00
Monday	Soft start	News/ Reading / Spelling	Reading / Spelling	Break	Numeracy – S.E.A.L 10.55 – 12.00	12.00 R.E.	Lunch	Writing	Music
Tuesday	Soft start	Handwriting	Numeracy	R	NCCT Mr Wilkinson P.E.	Reading /Spelling	U	Writing	I.D.L.
Wednesday	Soft start	Writing	Reading / Spelling	E	Maths - Mental Maths + Number topics	Handwriting	N	R.E.	I.C.T.
Thursday	NCCT Mr Wilkinson	P.E.	M.F.L. Spanish	A	Writing	Maths - Mental Maths	C	I.D.L.	H.W.B. Paths
Friday	Soft start	Spelling / Mental Maths	Reading Comp.	K	Maths - Mental Maths + Number topics	Writing	H	I.D.L.	R.E.

Primary 3/2 Homework - in partnership with parents

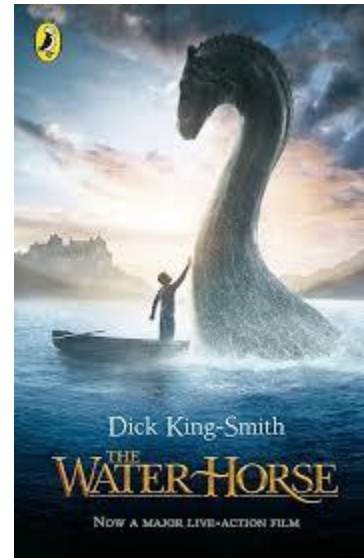


- ❖ A description of the weekly homework will be given each Monday. This will be issued on paper for the next two weeks, and thereafter, this will be available on SEESAW on a Monday.
- ❖ All reading books will be sent home with your child on a Monday.
- ❖ Sounds and words will be uploaded onto the activities tab on SEESAW. A paper copy will be issued for the next two weeks.
- ❖ Reading books and homework jotters should be handed in on a Friday. Homework can be uploaded to SEESAW for correction if you would prefer.

Primary 3/2 Flexible Learning Plan

TERM 1...

IDL - The Seashore and Under the Sea. The main areas of focus will be Health and Wellbeing, Literacy and Social Studies.



Primary 3/2 Reporting to Parents

Meet The Teacher

Formal Parent / Teacher Meeting

Weekly Seesaw Posts

Unplanned daily / weekly conversations

Sharing the learning events

Nativity

Wall displays

Learning conversations



Primary 3/2 Reporting to Parents



We report on your child's progress in a wide variety of formal and informal ways including:

- Informal Reporting
- SEESAW
- Social Media
- Sharing Our Learning events
- Newsletters



Please ensure you are registered on Parentpay

Time to explore our Primary 3/2 classroom!

- The children have a classroom hunt to do with you and then
- Please join your child in engaging in some Numeracy and Maths activities.



Thank you for coming!

Primary 2 maths stations

- ❖ Addition activity
- ❖ Counting activity
- ❖ Pattern activity
- ❖ One to one correspondence

Primary 3 maths stations

- ❖ Ordering activity
- ❖ Addition activity
- ❖ Number before/after activity
- ❖ Pattern activity